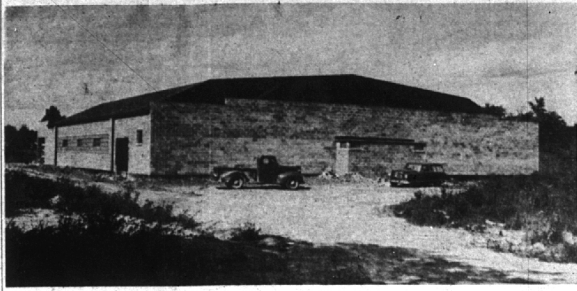


BIRMINGHAM BUSINESS BRIEFS



OPENING OF THE NEW Birmingham Bowling Alleys, 1000 Webster, is scheduled for Tuesday, Sept. 8. The building will not be completed at this time but some alleys will be open for play. The new alleys, moved from the Hunter avenue location, will be air conditioned with radiant heating and fluorescent lighting with separate meeting rooms for men and women leagues. The building will house 18 alleys and off-street parking has been developed for 150 cars. The alleys are owned and operated by Rodney Smith and son, Rodney.

Early Copy Next Week, Please!

What with Labor Day arriving next Monday, The Eccentric's work-week will be only 4 1/2 days instead of the usual 5 1/2. Therefore, for the issue of Thursday, Sept. 10, all

NEWS, DISPLAY AND CLASSIFIED ADVERTISING SHOULD BE SUBMITTED AT THE EARLIEST MOMENT to facilitate and insure its publication.

Again — EARLY COPY NEXT WEEK, PLEASE!

GOOD NEWS

For those who cannot come in at other times—our store will be open WEDNESDAYS until 12:00 noon—beginning September 9th.

During July and August, 1954, we will be closed all day Wednesday—MAYBE.

CHARCOAL CHAT

(By Briquette Hill)

While steaks, chicken, spare ribs, corn, etc. are the main gustatory delights from the back yard grill, we suggest that the absolute peak in eating and entertaining can be attained by starting up the grill in the morning for a mess of bacon, sausage and eggs or pancakes and sausage or bacon and fried apples (for Southerners.)

Believe me, the odor these things blended with the aroma of boiling coffee can make you glad you are alive and hungry.

Seriously, just because the children are getting ready for school again is no reason to put the grill in moth balls, or to go any longer without one.

MERION BLUE

Mias Blue is back again this week—not merely because we have a little left—but, because we know it takes 25 to 30 days for Merion Blue to germinate. So she should be started soon. We have no personal experience with Merion but if reports we receive are half true you should be anxious to make her acquaintance.

LEAVES

It is sad to realize that very soon the exquisite cloaks of green with which our trees and shrubs are clothed will take on their glorious autumn colors and then be shed (like mink in the summer). Well, we can't leave them lying around so we have assembled for your convenience a fantastic array of equipment to make your problem easier.

METAL BROOM RAKES

BAMBOO BROOM RAKES

WOODEN TOOTH RAKES

WIRE LOOP RAKES

LEAF SWEEPERS—20" WIDE

LEAF SWEEPERS—28" WIDE

A LEAF BURNER (on wheels)

A LEAF CARRIER—15 Bu. (on Wheels)

A 7 1/2 foot square, duck leaf carrier. This latter item costs only \$6.00 but you can lay it in the grass and lie on it, make a pup tent out of it, put it on the ground while you lie on it and work under the car (ha! ha!) and as mentioned, carry a whole lot of leaves with it back to the compost pile where with a little water and ACTIVO you can transform them into a wonderful humus to help grow perennials which you can buy the seeds for now and tulips and other bulbs which you can buy in a couple of weeks (WATCH THE ECCENTRIC) which will beautify your yard if the lawn is well fertilized and seeded now so that it will be nice and thick and beautiful when you spread this 7 1/2 foot square of duck on it and lie down and contemplate on what a lot of work goes into the creation of such a blissful moment.

McCLELLAN-BALL CO.

YARD SUPPLIES FARM KENNEL
BIRMINGHAM, MICHIGAN
Phone MI 4-4133 159 Brownall St.

Sleepy-Eyed Neighbors Complain Again of Noise

Torrey street residents living immediately behind a large super-market on S. Woodcock still aren't getting their normal night's rest, Henry Agles, 1758 Torrey, reminded city officials.

That big air conditioning unit atop their building is so noisy we can't sleep," he declared.

To save the nerves of third neighbors, Agles asked the city to see that baffles were placed on the conditioning unit to reduce the noise.

Several weeks ago he called the city commissioner's attention to this problem, and was promised the city would see what could be done.

Monday night officials again said they would look into the matter.

Little League Season Becomes Part of Record

By TOM McDANIEL

With the close of Birmingham's Little League's third season of league play already history, the record books are brought up to date to tell the story of the 1953 season.

| Club | G | A | B | R | OR | H | 2B | 3B | HR | Ave. |
|---------|----|-----|-----|-----|-----|-----|----|----|----|------|
| Giants | 18 | 425 | 138 | 49 | 145 | 181 | 21 | 0 | 1 | .316 |
| Braves | 15 | 323 | 76 | 20 | 85 | 75 | 7 | 0 | 1 | .263 |
| Pirates | 15 | 265 | 82 | 19 | 112 | 116 | 16 | 0 | 2 | .252 |
| Cubs | 16 | 327 | 28 | 161 | 81 | 93 | 9 | 1 | 1 | .156 |

| League Total | 4173 | 329 | 339 | 373 | 453 | 515 | 6 | 4 | 4 | .253 |
|--------------|------|-----|-----|-----|-----|-----|---|---|---|------|
|--------------|------|-----|-----|-----|-----|-----|---|---|---|------|

record books are brought up to date to tell the story of the 1953 American Division play. The following are the listings of National Division records which will appear in a later issue of The Eccentric.

| Club | G | A | B | R | OR | H | 2B | 3B | HR | Ave. |
|---------|----|-----|----|----|-----|-----|----|----|----|------|
| Giants | 15 | 324 | 62 | 15 | 105 | 120 | 10 | 0 | 1 | .317 |
| Pirates | 18 | 108 | 92 | 21 | 84 | 62 | 10 | 0 | 1 | .186 |
| Giants | 15 | 235 | 78 | 35 | 89 | 99 | 9 | 0 | 0 | .290 |

| Club | G | A | B | R | OR | H | 2B | 3B | HR | Ave. |
|---------|----|-----|----|----|-----|-----|----|----|----|------|
| Braves | 15 | 224 | 62 | 15 | 105 | 120 | 10 | 0 | 1 | .317 |
| Pirates | 18 | 108 | 92 | 21 | 84 | 62 | 10 | 0 | 1 | .186 |
| Giants | 15 | 235 | 78 | 35 | 89 | 99 | 9 | 0 | 0 | .290 |

| Club | G | P | PO | A | E | Ave. |
|----------------|----|----|------|----|---|-------|
| Hogan, Cuba | 4 | 4 | 1000 | 4 | 1 | 1.000 |
| Shepp, Cuba | 12 | 7 | 1000 | 7 | 1 | 1.000 |
| Pulce, Cuba | 15 | 10 | 1000 | 10 | 1 | 1.000 |
| Beaman, Cuba | 2 | 1 | 1000 | 2 | 0 | 1.000 |
| Napel, P.R. | 15 | 15 | 1000 | 15 | 0 | 1.000 |
| Saunders, P.R. | 17 | 17 | 1000 | 17 | 0 | 1.000 |

| Club | G | GS | CG | W | L | T | Pct. | SO | BB | R | ER | H | IP | Ave. |
|------------------|----|----|----|---|------|----|-------|----|----|----|--------|-------|-------|------|
| Drayton, Giants | 1 | 0 | 0 | 0 | 0 | 0 | 0.000 | 2 | 3 | 0 | 0 | 1 | 0.000 | |
| Now, Braves | 2 | 1 | 1 | 0 | 1 | 0 | 1.000 | 12 | 1 | 17 | 8 | 2.000 | | |
| Boucher, Pirates | 10 | 7 | 5 | 0 | 1000 | 44 | 13 | 35 | 10 | 27 | 26-2/3 | 2.000 | | |

Webb, Whiting To Play In Memorial Tourney

George Webb and Dick Whiting of Birmingham have accepted an invitation to play in the eighth annual Bill Waite Memorial Golf Tournament at Fred Waring's Shawnee Inn and Country Club, September 8 to 12, at Shawnee-On-Delaware, Pa.



PVT WALTER H. MEINBERG, son of Mr. and Mrs. Walter Meinberg, 5915 Adams, recently completed basic infantry training at the Medical Training Battalion at Camp Pickett, Va., and is now attending eight weeks of basic medical training at the base. Meinberg is a graduate of the Detroit College of Law.

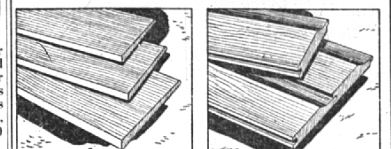
LEGAL NOTICES

SYNOPSIS OF THE REGULAR MEETING OF THE SOUTHWEST TOWNSHIP BOARD HELD AT THE TOWNSHIP OFFICE, AUGUST 26, 1955. Approved minutes of previous meeting. Declared intention of amending zoning ordinance No. 118 to rezone Farm Lands in Sections 2 and 11 from R-2 to R-4. Granted permission to Northland Center, Inc. to install water mains in Greenfield Road from Eight to Nine Mile Roads. Appointed Wm. Rosser and Leonard Lantz to Board of Trustees for Southeastern Oakland County Water Authority. Approved tax rate of \$1.25 per thousand assessed valuation for 1955 Township tax. Accepted donation to the Township of Cambridge Village Water and Sewer System. Authorized ordinance to prohibit industrial operations after 12:00 A.M. when such operation creates a public or private nuisance. Accepted bid from HJ Dawson to purchase rubbish paker. Appointed W.W. ROSSER, Supervisor and FANNIE ADAMS, Clerk. James W. Rowland, Atty., 2333 Pennington Bldg., Detroit 26, Mich. No. 41574. STATE OF MICHIGAN—The Probate Court for the County of Oakland. In the Matter of the Estate of J. MARK HARDIN, Deceased. At a session of said court, held in and to the County of the City of Pontiac, in said County, on the 25th day of August, A. D. 1955. Present: Honorable Arthur E. Moore, Judge of Probate. Order appointing time for hearing claims. Notice is hereby given and it is hereby ordered that the time and place for hearing on claims against the above estate shall be the 4th day of December, 1955, at the time of said session at the Court House at the City of Pontiac, Michigan. All creditors or claimants against the above estate are further notified and ordered to prove their claims at said hearing and prior to said hearing to file with the clerk of said court a written claim containing sufficient detail, reasonably certain amount of the claim. ARTUR E. MOORE, Judge of Probate. 25, 26, 27. You will find many bargains in The Eccentric Classified Columns.

Thousands of people read The Eccentric Classified Ads. So remember, if you want to sell that hard-to-get-rid-of article, advertise it in the Want Ad section of The Birmingham Eccentric.



WHEREVER YOU USE IT... Buy Lumber You Can Depend On!



LEVEL AND BUNGALOW SIDING Used widely as a quality long lasting outside surfacing material, Level and Bungalow Siding are available in a range of widths, grades and species. DROP SIDING The use of 4 Square Drop Siding assures a durable wall covering that will withstand years of exposure. Comes in a variety of patterns in a variety of West Coast woods.

FLOORING Weyerhaeuser 4 Square Softwood Flooring possesses attractive characteristics of economy and durability. Available in a range of grades and sizes. CEILING This practical, economical material is adaptable to numerous interior and exterior building requirements. Comes in a variety of patterns. Easy to apply and finished.

For Dependable Building Materials, see our complete stocks of Weyerhaeuser 4-Square Lumber.

MIDWEST 4-3636 BIRMINGHAM LUMBER AND SUPPLY COMPANY, INC. 1025 Haynes, Between Hunter & Adams 5 Blocks South of Maple Hours 7:30 to 5:00 Mon. thru Fri.; 7:30 to 1:00 Sat.

We wish to thank all of you who visited our new store during Grand Opening for making it such a big success.

WARFIELD PAINT COMPANY

250 N. Woodward, Birmingham



Our wish is to be of service to all, for the years to come.