

**Returns to Ann Arbor**

Returning to the University of Michigan for his sophomore year, Stuart Scheifele, son of Mr. and Mrs. Webster Scheifele, 176 Linden, will stay at Chi Psi lodge. The former Baldwin high school student made honor rating in both semesters of his freshman year.

**Returns From Far East**

(FHTNC)—Scheduled to arrive here from the Far East Sept. 21st on board the attack aircraft carrier USS Princeton is John D. Weldon, machinist's mate third class, USN, son of Mr. and Mrs. Lee H. Weldon of 3244 Alpine rd., Troy township.

**Bloomfield Hills to Buy New Police Squad Car**

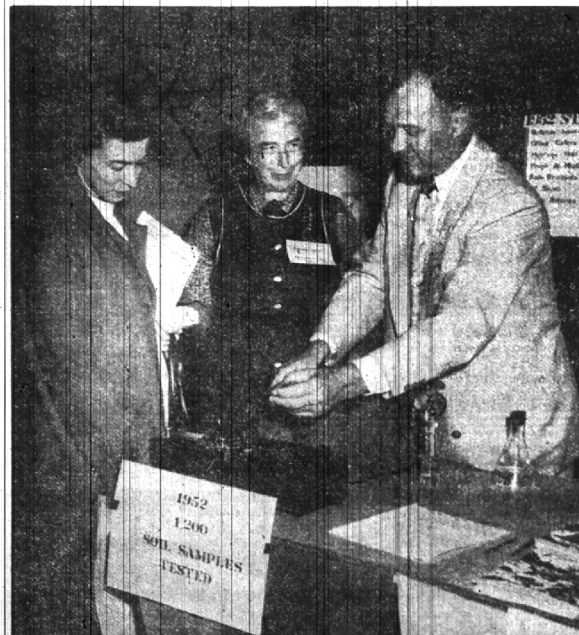
Purchase of a new scout car for the Bloomfield Hills police department was approved at the city commission's meeting last week.



SOUTHFIELD TOWNSHIP SUPERVISOR William Roeser (left), discusses problems of the Oakland County Board of Supervisors with David E. Anderson, Bloomfield township supervisor, at the board's booth. Administrative heads of many of the county's townships were on hand to take their turns in the booth.



MEMBERS OF THE COUNTY clerk's office were present to outline activities of their department. Peering over the stacks of records the office is responsible for are (left to right), Wilfred Cooney, deputy county clerk; Lynn D. Allen, county clerk; and Philip E. Rowston, deputy court clerk.



WATCHING A SOIL SAMPLING TEST at the county's agriculture department booth are (left to right), Mrs. J. W. Johnson, 1539 Cole; Mrs. William Lowrie, garden club representative assigned to the booth; Edmond W. Alchin, county agent. (Eccentric Staff Photos)

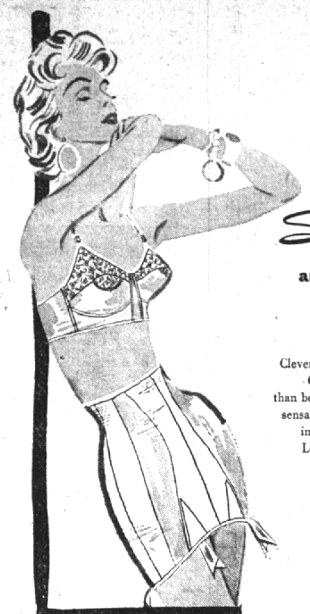
**PREDICTIONS:  
 Colder weather-  
 Topcoat problems-**

Young's are now showing the most outstanding stock of Topcoats ever to come to Birmingham. The many fabrics include gabardine, venetian covert, cashmere, and many others. A new line of luxury coats include Chester Barrie imparted topcoats made with American patterns, by expert English tailors, from the finest fabrics available. This combination gives you a topcoat that is second to none.

PAY US A VISIT AND SEE  
 A TOPCOAT THAT IS SURE  
 TO PLEASE YOU

**YOUNG'S OF BIRMINGHAM**

203 PIERCE ST.  
 Open Friday evenings



put on a Gossard  
*Secret Panel*  
 and take off your tummy

Clever lining of the front section makes Gossard Secret Panel flatten better than bones can. Created a national figure sensation almost overnight. Have yours in waistline, mid-top or hi-top style. Leno with satin elastic.

14" White \$10.00

**The GLASSFORD SHOP**

Personalized Service by Graduate Consultants  
 Store Hours: Mon. thru Sat., 9 a.m. to 5:30 p.m.  
 135 Pierce MI 4-5244

**How Mercury's Soaring Sales can mean "Money in the Bank" for You!**



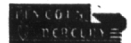
- 1 YOU PAY LESS NOW!**  
 Our higher volume lets us operate at a lower profit per deal. You get the advantage of a far bigger allowance for your present car.
- 2 YOU GET BACK MORE LATER!**  
 Popularity boosts future trade-in value. Even now, Mercury returns more of the original price than any other car in its class.

Mercury dealers, on an average, now sell more cars per dealer than any of their competition. We are, therefore, in a better position to give you a bigger allowance for your present car.  
 Ever mounting popularity tends to boost Mercury's trade-in value even higher. A Mercury's true cost (original price minus future resale value) is reduced to a point lower than any other car in its field.  
 So why not start saving—and enjoying the extra value that Mercury offers: like years-ahead styling, proven V-8 performance and economy, and the widest choice of optional power features available on any popular-priced car. Cash in on this money-saving opportunity. Come in today!

BEST TIME EVER TO BUY A  
**MERCURY**

You can get immediate delivery on Mercurys with MERC-O-MATIC—the smoothest no-shift drive.

Don't miss the big television hit, "TOAST OF THE TOWN" with Ed Sullivan, Sunday evening, 8:00 to 9:00, Station WJBK-TV



**TOM McDONNELL, INC.**

850 SO. WOODWARD

AUTHORIZED LINCOLN MERCURY DEALER

PHONE MI 4-1900 or JO 4-6179