

WRIGLEY'S TOP FROST DOLLAR DAYS



A Real Taste Thrill!
Wagstaffe Imported Jams
 Just Pure Fruit and Cane Sugar



WAGSTAFFE PURE
Strawberry Jam
 Giant 4-lb. Can **\$1.59**

WAGSTAFFE PURE
Raspberry Jam
 Giant 4-lb. Can **\$1.39**

WAGSTAFFE PURE SEVILLE
ORANGE MARMALADE
 Giant 4-lb. CAN **99c**

STOKELY'S FINEST
TOMATO JUICE
 Giant 46 Oz. Cans
2 For 49c

- | | | | |
|---------------------|---------------------------------|----------------------|--------|
| FRUIT COCKTAIL | HUNT'S CALIFORNIA | 3 2 1/2 Cans | \$1.00 |
| KLEENEX | DON'T PUT A GOLD IN YOUR POCKET | 3 300 Pkgs. | 69c |
| DELSEY | TOILET TISSUE | 2 Rolls | 27c |
| ORANGE JUICE | FLORIDA GOLD | Giant 46-Oz. Can | 29c |
| BARTLETT PEARS | STOKELY'S FINEST | 2 2 1/2 Cans | 79c |
| WELCH'S GRAPE JUICE | | 3 Big 24-Oz. Bottles | \$1.00 |

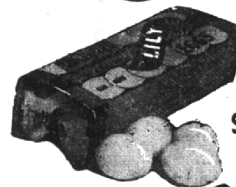


TOP FROST FRESH FROZEN
ORANGE JUICE
 7 6 OZ. CANS **\$1.00**

- | | | | | |
|---------------------------------|-----------------|--------------|----------------|--------|
| TOP FROST SPINACH | LEAF or CHOPPED | Fresh Frozen | 6 14-Oz. Pkgs. | \$1.00 |
| TOP FROST SUCCOTASH | | Fresh Frozen | 4 10-Oz. Pkgs. | \$1.00 |
| TOP FROST FRENCH FRIED POTATOES | | Fresh Frozen | 5 9-Oz. Pkgs. | \$1.00 |

TOP FROST FRESH FROZEN SLICED
STRAWBERRIES 3 12-OZ. PKGS. **\$1.00**

U. S. No. 1
 CALIFORNIA FLAME RED
TOKAY GRAPES
 2 lbs. **25c**

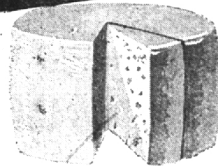


WRIGLEY'S
 Lily Brand
 Small, Grade "A"
FRESH EGGS
 IN CTNS. DOZEN **47c**

- | | | | |
|---------------------------|------------------|------------|--------|
| U. S. No. 1 Mich. Wealthy | ALL PURPOSE | 3 Lbs. | 29c |
| RANCHO GRASS SEED | | 5 -lb. Box | \$1.98 |
| FOR FALL TREATMENTS | Soil Conditioner | 5 Box | \$1.95 |

- | | | | |
|----------------------------------|----------------|--------------------------|---------|
| HOLLYBROOK'S BUTTER | DOUBLE WRAPPED | 1-Lb. Print | 69c |
| BORDEN'S STARLAC DRY MILK SOLIDS | | 16 Oz. Makes Five Quarts | 41c |
| KRAFT'S RINDLESS SWISS CHEESE | | Place or Sliced | Lb. 65c |

Finest Grown!
 U. S. No. 1
 Kool-Krisp Michigan
 ALL-PURPOSE
POTATOES
 15 LB. BAG **59c**



FANCY, NORTH BAY
AGED CHEESE WISCONSIN CHEDDAR L.B. **69c**

NEW PACK HART BRAND VEGETABLES

Golden Bantam	• CREAM CORN		
Small Tender	• SWEET PEAS	4 303 Cans	59c
CUT GREEN BEANS		4 303 Cans	69c
CUT WAX BEANS		4 303 Cans	69c
PEAS and CARROTS		4 303 Cans	69c
SWEET PEAS		2 8-Oz. Cans	27c
KIDNEY BEANS		3 303 Cans	35c

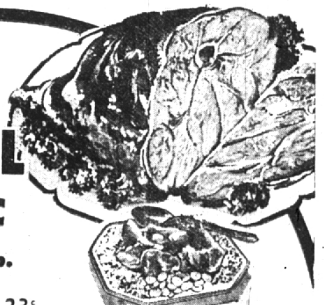
PILLSBURY'S BEST
FLOUR
 25 LB. BAG **\$1.98**
 5 LB. BAG 45c



- | | | | |
|-------------------|-------------------------|--------------|-----|
| JIFFY BISCUIT MIX | | 40-Oz. Pkg. | 29c |
| FELS NAPHTHA SOAP | 10 Bars | | 69c |
| CANNING JARS | BALL or KERR QUART SIZE | Cs. of 12 | 99c |
| JAR RUBBERS | PKG. OF 12 | 2 for | 15c |
| SURE-JEL | CANNING AGENT | 2 Pkgs. | 25c |
| TOMATO PASTE | CONTADINA | 3 6-Oz. Cans | 29c |

1 LB. VAC. CAN **79c**

MICHIGAN MILK-FED
LEG O'VEAL
 Tender Nutritious Delicious **45c lb.**



- | | | | |
|-----------------|-------------------------------|--------|--|
| BREAST of VEAL | | 23 Lb. | |
| VEAL ROAST | Shoulder Knuckle Bone Removed | 43 Lb. | |
| PORK ROAST | 1st 7 Rib Cut | 43 Lb. | |
| LAMB ROAST | Shoulder Cut | 45 Lb. | |
| LAMB CHOPS | Blade Cut | 69 Lb. | |
| LAMB BREAST | | 15 Lb. | |
| LAKE ERIE PERCH | Scaled | 27 Lb. | |

CUT UP, Ready to Cook
STEWING CHICKENS
49c lb.

Michigan Milk-Fed
VEAL CHOPS
 Blade Cuts **55c lb.**



SEE and HEAR "THE CISCO KID" on WXYZ-TV, Channel 7, Every THURSDAY from 7:00 to 7:30 P.M. - Also See "THE LADY OF CHARM" on WXYZ-TV, Channel 7, from 8:00 to 12:00 P.M. MONDAY, WEDNESDAY, THURSDAY and FRIDAY.

635 SOUTH WOODWARD ★ ★ **Open Thursday, Friday and Saturday 'Til 9 p.m.**