

WE HEARD IT SAID BY—
 Russell H. Fisher, 1450 Ponton Colony, Foxcroft: "I recently made a vacation trip up to the Keweenaw Peninsula, in Michigan's Upper Peninsula, and the atmosphere and scenery were perfectly wonderful. I had traveled over most of our State before, but never did get into the copper country that extends into Lake Superior. I heartily recommend such a trip to anyone who wants to be thrilled."

The rocky shore line along Copper and Eagle Harbor is very picturesque, while the view from the high Brockway Mountain drive is breath-taking in beauty."
 Thousands of people read The Eccentric Classified Ads. So remember, if you want to sell that hard-to-get-of article, advertise it in the Want Ad section of The Birmingham Eccentric.



MICHIGAN OUTDOORS

RINGNECK HARVEST AHEAD

It's going to be a bumper year for pheasant hunters, according to latest reports from our Michigan Department of Conservation. Rural mail carriers in pheasant territory count the broods they see on their routes, and when possible count the number of chicks in a brood. This year's count shows a substantial increase—and to prove that this type of count is reliable, the increase over a sizeable portion of the terrain as computed from many different counts ranges right around 35%. Up in the Thumb counties the boost is greatest—ranging up to 35%.

Dog Trainers Active
 Dog trainers and handlers in the Thumb say they're putting up lots of young birds—more than last year—in many areas. Carl Frederick of Elkton and Bud Day of Uly working their gun dogs late in the evening have flushed as many as 100 pheasants in a single session.

More Hunting Dogs Afield
 Each year more and more hunters recognize the importance of a good dog, and this year, according to reports, there'll be more pointers, setters, Britanias, Springers and assorted breeds in the chase. This adds greatly to the pleasure of hunting—and subtracts from the number of crippled birds normally lost each year.

Big Season Forecast
 While we may never again kill a million and a half cock birds as we A former Birmingham resident, Mort Neff presents his half-hour show, "Michigan Outdoors" over WJL-TV, Detroit, each Thursday at 10 p.m.

Call Midwest 4-1100 to place an Eccentric Classified Ad.

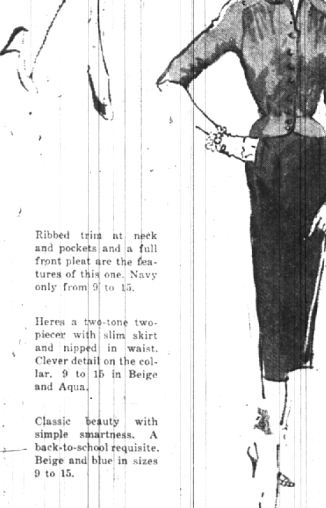
Elegance At-Low-Cost

G R A H A M FURS
 New furs from New York in beautiful light Shades.
 The fur coat of your dreams at wide-awake sale prices that you'll recognize as Top Values! See our exciting new collection of lustrous beauties, flawlessly tailored in Fall's newest styles. Do come in and let us show you our fine selection of fur jackets, stoles and full length coats.
 1512 SOUTH WOODWARD
 LI 5-4242
 Just north of 10 Mile



All three bear Merley's Famous Label
WOOL JERSEY DRESSES
 \$19.95

"MERLEY", recognized as THE finest maker of wool jersey dresses for many years, now presents his new fall group. The same fine tailoring and detail perfection, the same fine quality fabric and superb styling again present in full measure. See them today.



Ribbed trim at neck and pockets and a full front plait are the features of this one. Navy only from 9 to 15.

Here's a two-tone two-piece with slim skirt and nipped-in waist. Clever detail on the collar. 9 to 15 in Beige and Aquat.

Classic beauty with simple smartness. A back-to-school requisite. Beige and blue in sizes 9 to 15.

RB SHOPS
 Smart Feminine Apparel
 142 W. Maple—Birmingham
 Branches in Royal Oak—Ferdale—Mt. Clemens
 Open Friday Evening to 9

W. Virginia Garden Offers Several Ideas
 By ALICE WESSELS BURLINGAME
 Special Writer for The Birmingham Eccentric

Last week this column terminated in the courtyard of the Greenbrier hotel at White Sulphur Springs, W. Va. As there was more to tell you about ideas you might use I suggested that you by my guest for a week there.

AS YOU VISIT their garden you feel as though gardening is a way of life for the Hutchinsons as they work together in their yard.
 They have a vegetable garden 50 x 75 feet, where you will see a "grape avenue" five and a half feet high.
 A long bed of the various herbs assures Mrs. Hutchinson of nice gift packets for the holidays as well as for unusual flavor to her cooking.
 In this vegetable area currants guarantee good jelly and gooseberries and transparent apples supplement the usual abundance of vegetables.
 "Our garden may not look perfectly manicured but we insist that the work in the garden remains a pleasure and it must keep this status," explained Mrs. Hutchinson. Needless to say that they have a compost pile, and manufacture their own good humus for all their garden work.

AT THE BACK of their garage facing into the garden they have built a shop-tool house. The door leading into it from the garden is an artistic Dutch door. The shop
Glenn Wing Power Tools
 • Atlas • Delta
 • Porter-Cable
 • Shopsmith
 • DeWalt Saws
 1437 SOUTH WOODWARD
 Five Blocks North of 14-Mile Rd.
 BIRMINGHAM, MI 4-2444
 Daily 8 to 6:00—Fri. 8 to 6:00

GIVEN A SIBBY location a citrus tree is also easy to raise. When it is in flower shake the tree for pollination. The Lew Bester's in Bloomfield Hills have a large lemon on their tree which they are guarding carefully.
 In this exotic courtyard they make good use of tulips in the spring and every year plant a new batch of bulbs.
 After the tulips are past their prime, the stems are cut to two inches above ground to "prevent bleeding," explained the gardener. They are lifted from the ground and placed in a cool place, later cleaned up, sorted as to size and placed on racks. Sulphur is sprayed on them.
 In November they are replanted in another location, off in a distant location where prime performance is not paramount but color splash is important.
 The rule of placing new bulbs in the most important locations, near your doorway, etc. may be one you will wish to follow.

AS A BEDDING accent, with the plants in in mind as a "drift" I saw heliotropes, called "royal fragrance." This royal purple flower is worthy of an underline in my notes.
 This concentrated garden in the courtyard is completely changed three times a year as far as the flower effect is concerned. In the spring there grows a lot of show. In late May these are replaced with annuals, and the middle of September chrysanthemums grandiose in far paper pots, are sunk in the ground to complete the garden cycle.

A visit to this peaceful garden reminded me of Whittier's writing: "The windows of my soul I throw wide open to the sun."
 I hope the reference to lilies in the last column alerted you to the fact that this is "lily time" and your chance to have a choice display next year. A grouping of exotic white madonnas provide a fine complement in front of evergreens. Vivid yellow lilies will give style to your garden during June and July.

One of our fine lily growers is Mrs. R. B. Hutchinson, 32415 Beacottfield. When her stipulium was in maximum flower she had masses of rubrum, madonna, and gold band lilies as companions.

ASTHMATICS!

You know what you want—relief! Simple effective relief from the irritating and lung-damaging effects of the asthma. Try of Angostura! Tired of coughing? Try of Angostura! The BROTHERS' (Angostura) is America's best automatic preparation. Angostura has been used for centuries as a substitute for genuine BREATHEASY, the most effective and most reliable remedy to combat quickly and effectively, as easy as breathing. It's your money back guarantee. Write for more information.
WILSON DRUG COMPANY
 181 S. Woodward Ave.



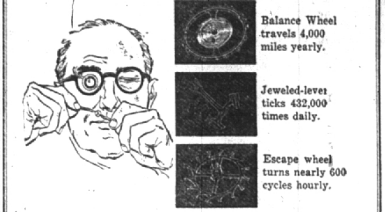
"Naturally he chose the girl who put extra Angostura" in his Old Fashioned"
ANGOSTURA.
 AROMATIC BITTERS
 MAKES BETTER DRINKS

*P.S. For cocktails with perfect flavor and fragrance, marry the ingredients with Angostura. Then, sip happily ever after!

This colonial home with its farm fence and purple clematis, greeting the fall visitor, speaks for itself in the joys of the living.
 Are you thinking of buying a new home? Then read the "For Sale—Homes" columns on the Classified Ad page of this week's Eccentric.

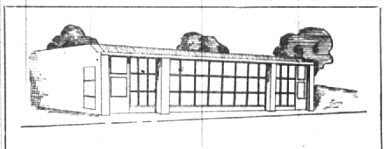
IT'S WATCH INSPECTION TIME!

THIS WEEK
 Your watch serves you best when you have it expertly serviced



A simple checkup now may save you time and money later on. Let our expert Service Department inspect your watch this week.

213 E. Maple
KINCAID'S MI 4-7830
JEWELERS
 35 Years Experience In
WATCH REPAIRING
 Guaranteed, Dependable Service



WUNDA WEVE

Do You Have A
BED-WETTING PROBLEM?
 We have the cure for this!
SHAIN'S
 REVALL DRUG STORE
 105 W. Maple MI 4-2121

CARPETS
 available at
Wieland's
 UPHOLSTERY DRAPERIES
 523 N. Woodward Ave., Phone MI 4-2530

AUSTIN'S SINCE 1888

★ Do It Yourself Tools Rented ★
 Custom Mixed PAINTS As You Like Them

HEADQUARTERS

For
ARTIST and HOBBY CRAFT
 Week End Decorators — and Do-It-Yourself
SUPPLIES

Plenty of Copper, Brass or Aluminum Metal on Hand for Metalcrafters.

GET STARTED EARLY

W. 12 Mile Rd.
 Just east of Post Office, Berkeley
 Open 9-6 daily Except Friday 9-9
 Phone LI 1-6070

