

Red Cross Plans Orientation Meet For Volunteers

Mrs. Bradlee Pruden of 491 Hanna, vice chairman in charge of volunteers for the Oakland county Red Cross chapter, will speak on her experiences in the Flint tornado area on Oct. 15 at St. John Episcopal church, Royal Oak.

The all-day session will be the orientation meeting for those interested in joining the chapter and to the public.

A session planned especially for prospective volunteers will open the program at 10 a.m. Special attention will be given to disaster work and bloodmobile visits.

The bloodmobile session will in-

clude discussions on ways to recruit volunteers, operation of the "mobiles" and the blood program, generally. This meeting is planned for 1 p.m. Two speakers, Mrs. Mark Garlick of Lake Orion, chapter chairman for blood bank volunteers, and Mrs. James Wickert, donor recruitment chairman, will be heard.

RESERVATIONS for the luncheon, served by the church guild, should be made through Red Cross offices at Pontiac or Royal Oak.

Several other speakers are scheduled for the day, their topics including volunteer work, home service department, especially as the latter deals with servicemen and their families.

Mrs. Herman Rodriguez of Royal Oak will have charge of the nursing section of the program, including disaster plans.



SEVEN LITTLE Birmingham citizens register with Mrs. W. B. McConaghy, prior to taking the vision screening tests for pre-school children, sponsored by the local Junior League group. With Oct. 9 the final day for the current program, the League has announced Tuesday and Wednesday sessions at All Saints Episcopal church, Pontiac, Oct. 13 through Nov. 4. Birmingham Leaguers will conduct the tests there and announce that any area residents missing the local program will be more than welcome at the Pontiac group. The tests will be given from 9:30 a.m. to noon during the eight days.

PUBLIC SALES

Not an Auction — All Items Priced

Household Furnishings

Est. of Edna R. Grant

848 W. Chicago Blvd.
Detroit, Michigan

Additions

Saturday, Oct. 10th. from 10 A.M.

Mr. and Mrs. J. L. Gates

Moving to Florida

W. Warren to Hartwell turn N. 3 Blocks
East Dearborn

Sunday, Oct. 18th. from 10 A.M.

SALES CONDUCTED BY

H. O. McNIERNEY

Appraiser 424 Book Building,
Woodward 1-9085



Don't Use Frayed Electric Cords!

... or the next home that burns may be your own!

9 out of 10 home fires are preventable! So ... Don't give fire a place to start!

THIS MESSAGE SPONSORED BY
MACHUS BAKERY
160 W. Maple

PLAY IT SAFE!

Your Home Need Not Be A Fire Trap

EVERY TIME the little red wagons of the fire department roll up to a fire you can hear someone at that address say, "I didn't think fire would ever attack our house".

Don't be fooled by false apprehensions. The National Fire Prevention association reports that the fire loss this year will exceed \$800,000,000 with approximately 11,000 persons burned to death.

Face the facts and act now to prevent such a catastrophe from occurring in your home. If the following suggestions are carried out in each home, the chances of a fire are reduced by 90 per cent.

1. HAVE the heating plant thoroughly checked by a competent repair man. Ask him to check the furnace, smoke pipe, hot air ducts and chimney. Be sure all automatic controls are operating correctly.
2. If you have a wood single roof and burn coal in the furnace, papers in the incinerator, or have a fire in the fireplace, be sure you

- have a good spark screen on top of the chimney to catch large pieces of flying papers and wood embers.
3. Keep matches out of children's reach and remember, when that cigarette is down, it may not be out.
4. Use only non-explosive cleaning fluids. If in doubt call the fire department.
5. Keep closets, attics and basements free of old papers, rags and discarded furniture.

6. WHEN YOU over eat you suffer—the same thing happens when you overload your house circuit; use 15 amp fuses in the fuse box and if they blow out you will know something is wrong. That is the time to call a electrician and have the situation corrected.
7. Keep ashes and the poker away from wood or other combustible material.
8. If you do have a fire, know in advance just exactly what you are going to do regardless of the time of day or night. If fire should be coming up the only stairs, have an alternate means of escape.
9. Do you know whose phone number is MI 4-1615?
10. PLAY IT SAFE. Don't say, "It can't happen to me".

Prepared as a public service by members of the BIRMINGHAM FIRE DEPT.

Household Goods of every description are offered for sale in the Classified Columns of The Birmingham Eccentric.

Jacobson's

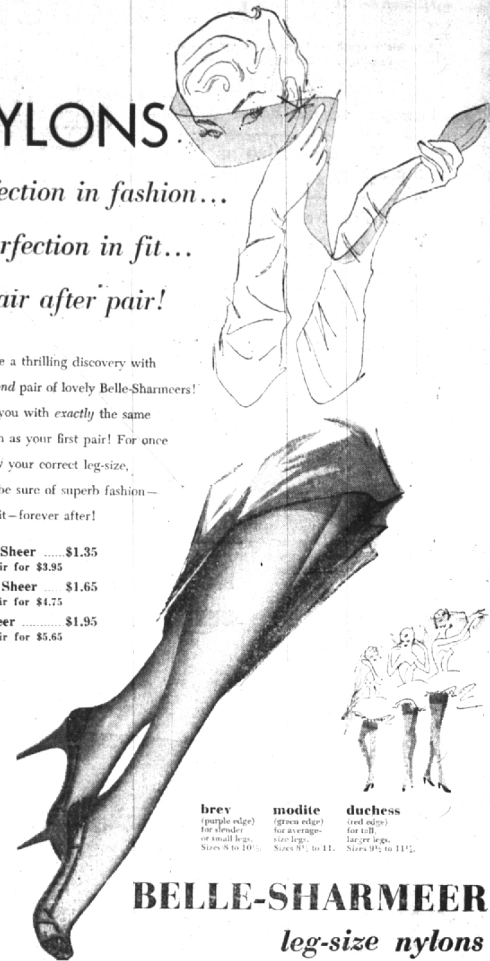
BIRMINGHAM

You're Invited
—to visit our New Home Decorative Shop at 825 N. Woodward, Birmingham ... opening tomorrow, Friday, October 9th.

NYLONS
perfection in fashion...
superfection in fit...
in pair after pair!

You make a thrilling discovery with your second pair of lovely Belle-Sharmees! They fit you with exactly the same perfection as your first pair! For once you know your correct leg-size, you can be sure of superb fashion—flawless fit—forever after!

- Walking Sheer\$1.35
3 Pair for \$3.95
- Business Sheer\$1.65
3 Pair for \$4.75
- Ultra Sheer\$1.95
3 Pair for \$5.65



brev (simple edge) for slender or small legs. Sizes 8 to 10.
modite (even edge) for average-size legs. Sizes 8 1/2 to 11.
duchess (vel edge) for full, big size legs. Sizes 9 1/2 to 11 1/2.

BELLE-SHARMEER leg-size nylons

Figure Yourself Out.. Beautifully!

BALANETTE ... the most beautiful corset fabric you've seen ... slims you down to sylph proportions with firm, yet lightweight elasticity and trims you with Tru Balance's principle of natural torso-moulding figure control.



Keep your body in Tru Balance

A. Waist and hip-diminishing girdle of white Balanette, for fashion's narrow look ... flattens, nips and sleeks with no pressure. Sizes 26 to 31; 14" and 16". 18.50

B. All-in-one white Balanette corset to pare your figure to an exclamation point with firm, easy control. Sizes 34 to 40. 14-inch and 16-inch lengths. 18.50

C. White Balanette hi-waist girdle to lift you in front, pat you down in back, and put your body in perfect balance. Sizes 27 to 34; 14 and 16-inch lengths. 18.50



B

FOUNDATIONS PARKING LEVEL

USE YOUR CHARGA-PLATE®

for you... by I.M. Miller

SHOE SALON STREET LEVEL

The very petite, the elegant T-strap sandal. Fashioned for you for tea, cocktails, champagne, and all your autumn fancies. In black suede. 22.95

Jacobson's BIRMINGHAM

Jacobson's

BIRMINGHAM