

Fisherman's Woes
 Kansas City—While Joe Stimpach and Louis E. Kirchner were fishing from a boat, their wives fished from the bank at the Lake of Ozarks. Mrs. Stimpach fell into the lake and Mrs. Kirchner barely managed to pull her out. Then De-

borah Sue Stimpach, 2, threw the automobile trailer hook into the lake, which meant Stimpach couldn't bring his boat home on that trip. Starring home, Stimpach found his car's brakes were out and he had to hunt up a repairman. They caught one fish—which a turtle stole.

Doing Well
 Malvern, Ark.—The white leg-horn pullet, owned by James Bell, set some kind of record for other pullets to try for. Her first egg measured 8 1/4 inches around at the ends and 6 1/4 inches around the middle. It weighs 5 ounces. An average hen egg weighs 2 ounces.



REMEDY FOR SMALL LAKES

Among Michigan's 11,000 inland lakes are many ranging from 10 to 50 acres which are rarely of much consequence for fishing. Some are privately owned—many more are within public fishing areas—and all are good prospects for excellent fishing, if we are to judge from recent experiments conducted in our neighboring State of Wisconsin.

How fishing can be extremely poor because there are too many fish, and then become phenomenally good when fish are given more room and food has been clearly proven by the fish management division in Wisconsin. One pond chosen for the test had an area of 27 acres. It was loaded with carp and stunted panfish, and the water was extremely murky.

Poison Used
 All fish were removed by poisoning... the water cleared quickly, and the lake was stocked with 15 pairs of largemouth bass, 15 pairs of northern pike and just two pairs of bluegills! There was a tremendous hatch of bass and in the middle of the second growing season these fish were about 10 inches long, a growth rate of about twice normal. A conservation biologist caught 21 of these fish in an hour in contrast to the usual success ratio of only 8 fish per hour.

A former Birmingham resident, Mart Neff presents his half-hour show, "Michigan Outdoors" over WWJ-TV, Detroit, each Thursday at 10 p.m.

Experiment Duplicated

A second lake under observation was very muddy, and overpopulated with under-sized panfish and carp. Fishing had been poor for many years. Again the Wisconsin Fish Division moved into the picture. The lake was poisoned out, all fish killed, and again the water cleared shortly thereafter. A cottage owner said he had never been able to see the bottom of the lake before. Once the poison had been dissipated this particular lake was also stocked with bass and pike in small quantities—30 pairs of each. Big hatches followed in the next season, with the fish staging rapid growth in water where there was plenty of room and plenty of food. Fishing success at the end of the second season was spectacular.

Plan for Michigan
 Here in Michigan similar experiments have concurred with these results—pointing to the possibility of tapping a huge new reservoir of fishing waters in the future. Obviously, the problem of poisoning out large lakes is a difficult one. For the time being the project will probably have to be restricted to the smaller bodies of water. Private owners should contact the Fish Division of the Conservation Department relative to the approach to the problem. Organized sportsmen's clubs can get back of recommendations where public lakes are involved.

A former Birmingham resident, Mart Neff presents his half-hour show, "Michigan Outdoors" over WWJ-TV, Detroit, each Thursday at 10 p.m.

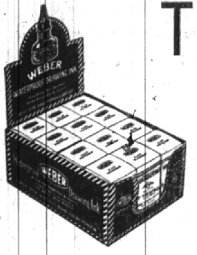
Elected To Council

At a meeting of Men's League Council of Carleton college, Northfield, last week, Robert Kirk, son of Mr. and Mrs. A. D. Kirk, 1069 N. Adams, was elected associate

justice of Men's League traditions' court. The purpose of Men's League, the governing body for men, is to hear the ideas and complaints of the men students and make recommendations for enactment of suggestions.

Economy leader of the great Ford Economy Truck line! New Ford F-100 Pickup, 6 1/2-ft. box with 45 cu. ft. capacity. World's most powerful with 106-h.p. V-8. Or 101-h.p. Six. (Deluxe shown, extra cost.)

Drawing or Drafting TABLES



All sizes and prices



MI. 4-9034

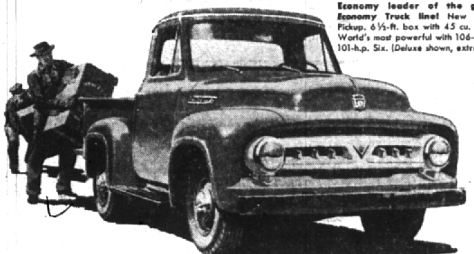
240 S. Woodward

Art Supplies
 Paints
 Wallpapers

WHAT A DEAL WE CAN GIVE YOU!

... just choose the Ford Economy Truck that's right for you ... then come in and see us!

We're offering extra-generous trade-in allowances!



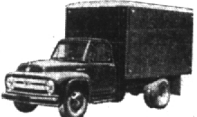
With 1953 sales 42% above last year, your Ford Truck Dealer can afford to give you his best deal in years!

You can get a bargain in any one of over 190 new Ford Economy Truck models! You get Synchro-Silent transmission standard... at no extra cost!

New Low-Friction power! Choice of V-8's or Sixes! All-new Drivitized Cabs! NOW... wheel the old truck into your Ford Dealer's for the biggest new-truck bargains in years!



Big-duty load space of light-duty cost! New 9-ft. F-350 Express has 74-cu.-ft. load box. Takes payloads up to 2,951 lbs. Choice of V-8 or Six. Also, V-8, Platform-Box model. Deluxe (shown) at slight extra cost.



Biggest seller in its class! Popular 1 1/2-ton Ford F-500 truck is best seller in its class for 6 years! 9- and 12-ft. Platform-Boxes, V-8 or Six engine, G.V.W., 14,000 lbs. In tractor version, F-500 has a G.C.W. rating of 24,000 lbs.



Big new king of Ford's Cab Forward Trucks! New Ford C-800 BIG JOB, G.C.W. of 23,000 lbs., G.C.W. of 48,000 lbs. Payloads over 8 tons! Drivitized Cab, full-width seat! Powered by 152-h.p. Cargo King V-8.



Sales leader in its class! Ford F-800 JOB is a big-duty, yet priced low! G.C.W., 48,000 lbs., G.V.W., 22,000 lbs., 155-h.p., Cargo King V-8.



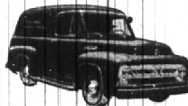
Highest new Ford Truck plant! Ford F-900 with 27,000-lb., G.V.W. G.C.W., 55,000 lbs. 1 1/2 wheelbases, payloads up to 20,120 lbs. Powered by Ford's mighty new 155-h.p. Cargo King V-8!



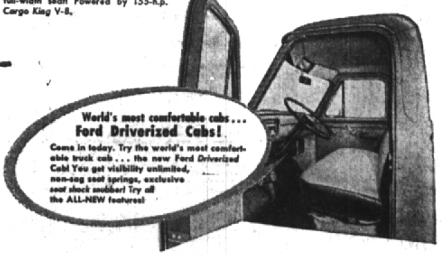
Powerful heavy duty performance leader! New F-400 has 21,000-lb. G.C.W. G.V.W., 16,000 lbs. Six or V-8, Synchro-Silent transmission standard. Also, 9-12 ft. Platform-Boxes, Deluxe (shown), extra cost.



Parcel Delivery Chassis doubles load space, boosts earnings! New F-350 Parcel Delivery Chassis for custom bodies 7 to 11 1/2 ft. long, up to 400 cu. ft. capacity. Forward control, 101-h.p. Six.



One of the longest 1/2-ton panels in the Retail New 8-ft. F-100 Panel is one of the longest, tallest 155.8 cu. ft. of load space, all-steel body, V-8 or Six! Deluxe (extra cost) shown.



World's most comfortable cabs... Ford Drivitized Cabs!
 Come in today. Try the world's most comfortable truck cab... the new Ford Drivitized Cab! You get visibility unlimited, noiseless steel springs, exclusive seat shock absorber! Try all the ALL-NEW features!

Academy's Cranberry Bowl — The Zaniest of Them All



THE ANNUAL PARADE regularly precedes Cranbrook Art Academy's Cranberry Bowl and members of the band pictured above lead the gladiators past spectators Friday afternoon, Oct. 23, to the field of battle. Included also in the parade are the cheerleaders and members of the Academy's student body.



ONE OF THE BIG MOMENTS in the parade is the passing of the queen atop the school's limousine. Elected by the student body the queen reigns for a day over the special activities of the Cranberry Bowl. This year's queen is Louis Gonet.



ACTUAL GRIDIRON ACTION is sometimes rough in the game that defies rules and organization. Members of the "Cool Ones" team resort to trickery as they attempt to smuggle the bowl across the "Fig's" goal line.



CHEERING THEIR FAVORITES on to victory in the grid battle are these bronze-painted cheerleaders. They were painted to resemble figures of Cranbrook's famed fountain at the rear of the Art Academy.

FORD ECONOMY TRUCKS

SAVE TIME • SAVE MONEY • LAST LONGER

HAROLD TURNER, Inc.

Turn to Turner — Your Friendly Ford Dealer

464 SO. WOODWARD AVENUE

PHONES MIDWEST 4-7500 or JORDAN 4-6266