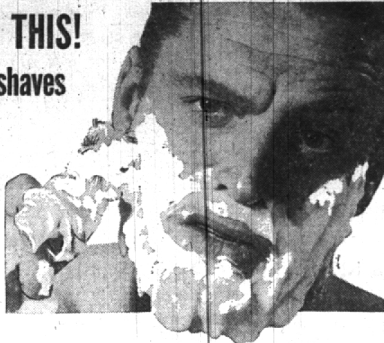


DON'T DO THIS!
Get close shaves
with a
SCHICK
"20"
or your
money back



Do you think you must lather your face day after day—and run out of blades and nick yourself once in a while? Are you sure an electric shaver can't give you close shaves?

Then you just haven't tried the right electric shaver—the Schick "20." For the Schick "20" is the shaver that has all three of the features you need for close shaves:

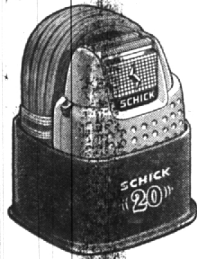
THE RIGHT EDGES • Bevelled Comb Edges. Lead all whiskers in for a closer shave.

THE RIGHT HEADS • Face-Fitted. Scientifically sized to get every whisker.

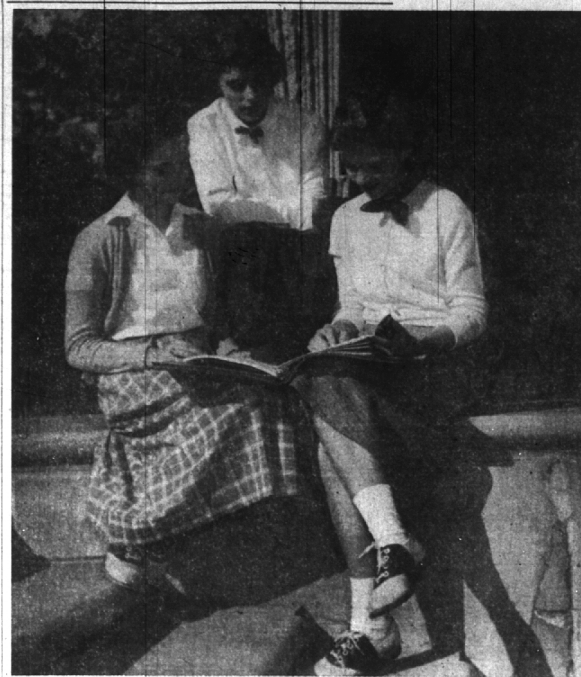
SELF-SHARPENING • Sharpens as you shave, assures close shaves always.

Skeptics Invited!
10-DAY NO-RISK HOME TRIAL

We don't want you to risk a penny. Just try a "20" at home for 10 days. You must get close electric shaves or return the shaver to us and get back every cent! In handsome Caddie Case, ideal for travel. **\$26.50** in your living or bathroom shelf.



WILSON Drug STORE
DEPENDABLE PRESCRIPTION SERVICE
WOODWARD at MAPLE PHONE MIDWEST 4-3600



JUNIOR CLASS MEMBERS AT KINGSWOOD school directed the annual school festival Saturday night. Committee members who helped stage the "We Got Rhythm" theme are pictured above shortly before the festival opened. From left to right are Martha Buhse, script director; Jeannie Luce, in charge of choreography; and Barbara Knoblock, general chairman. (Eccentric Staff Photo)

Tree Climbing Dog a Bear
Pretor, Mont. — Reporting to fellow second-graders that he had seen a "dog" sitting high up in a tree, the children demanded to see

the animal. And so did the boy's neighbor, Mrs. Maude Adams. She took one look at the "dog" and then blasted the animal with her rifle. A 200-pound bear crashed from the tree.

Class Officers Named At High

Class officers were chosen in elections run off last week to serve for the school year 1958-59. Leading the senior class will be Terry Laundry, president; Jerry Beck, vice president; Cherry Harris, secretary; George Stinnett, treasurer; and Alice Richards, senator. Coming out on top for the juniors were president, Stan Rosenquist; vice president, Sue Spencer; secretary, Charlene Sutin; treasurer, Sue McDonald; and senator, Jim Mosby. Sophomore class winners were Roger Waud, president; Judy Collins, vice president; Helen Colwell, secretary; Julie Stubbs, treasurer and Nancy Clark, senator. Freshman officers are president, Phil Barger; vice president, Don Thaler; secretary, Chris Lewis; treasurer, Nancy O'Brien; and senator, Willis Sawyer. This year the elections were carried out in a new way. The seniors had a nominating committee and primaries while the lower classes had petitions and primaries. Students in the civics classes acted as election boards and counted the votes.

Crane Homecoming Plans Completed

Sports events, campus decorations and a reception will highlight annual Homecoming festivities for Cranbrook School alumni on Saturday, Oct. 24. Centering around soccer and football games with Shady Side Academy of Pittsburgh, the day's program begins at 10 a.m. with soccer, and also includes luncheon for all guests before the football game and a reception after it. Homecoming decorations in the Quadrangle will be judged following luncheon by Marshall Frederick, well-known sculptor; Henry S. Booth, chairman of the Cranbrook Foundation; and Mrs. Kenneth D. McGregor, wife of the chairman of the board of Cranbrook School, who will award a coveted little brown Jug to the host of the five dormitories. Half-time ceremonies include a cross-country run, and a comic obstacle course run by the seventh and eighth grade students. Members of the homecoming committee include Carleton Melain, chairman; Mrs. Bruce Coulter, Mrs. Arthur W. Palmer, Jr., Mrs. Richard Hintermeister, John House, Ben Snyder, Gerard S. Blythe, student; Haya Rockwell, head prefect; and representatives from each dormitory, the school band, and the varsity letterwinners club.

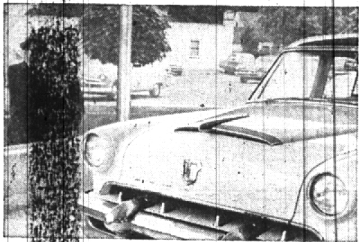


dream dolls come true... styled by **Terri Lee**
those too-beautiful-to-be-true dolls by famous Terri Lee... fashioned after her own child... in life-like, non-breakable plastic, lovely real hair... in blondes... brunettes and redheads... dressed as fashionably as a cover girl... in costumes of all types... from simple cotton pinafores to dazzling net formals and gold dancing slippers. Truly, every little girl's dream of a doll actually come true.

In Our Toy Department Downstairs
BODINE'S
"The Greeting Card Shop"
172 N. Woodward MI 4-1177

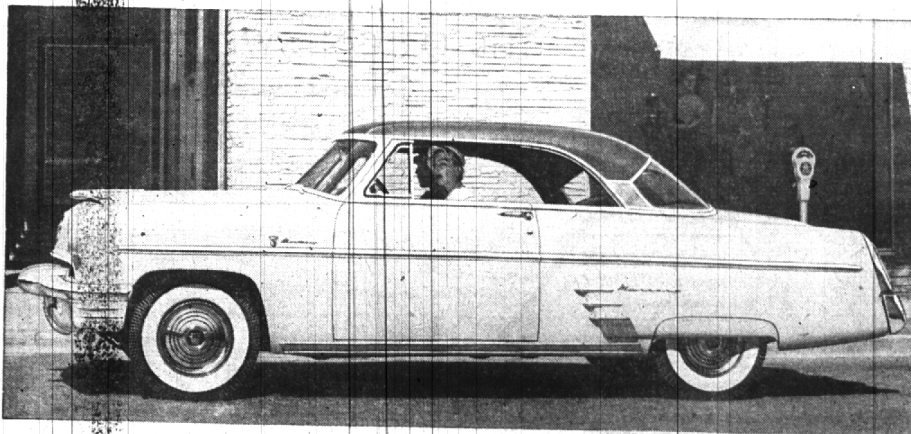
CAR BUYERS! COMPARE OUR

"DOUBLE PAY-OFF"!



1. CASH IN ON OUR SPECIAL ALLOWANCE ON YOUR PRESENT CAR

2. SAVE HUNDREDS IN THE FUTURE—MERCURY CONSISTENTLY LEADS ITS CLASS FOR TRADE-IN VALUE



We don't say you can't beat our high trade-in allowance for your present car. Some cars of a less popular car may offer you a few dollars more. But we do say that in the long run, our Double Pay-Off deal is the one you really want! Our deal means savings—now and in the future. Getting a Mercury with a reputation for

returning more of your original investment than any car in its field. You'll be getting Mercury's years-ahead styling, proven V-8 power and economy—plus the widest choice of optional power features in a popular-priced car. Act fast on this "Double Pay-Off" deal while we can still offer you our special trade-in allowance!

MOVE AHEAD WITH **MERCURY** —GET MORE FOR YOUR MONEY

Don't miss the big television hit, "TOAST OF THE TOWN" with Ed Sullivan. Sunday evening, 8:30 to 9:59. WJBK-TV, Channel 2

TOM McDONNELL, INC.

AUTHORIZED LINCOLN MERCURY DEALER

PHONE MI 4-1900 or JO 4-6179

Do it Yourself!

FASTEST, EASIEST WALL DECORATION TO APPLY!

Ask us to demonstrate

Big Quick

The Marvelous, New Scrubbable **DO-IT-YOURSELF WALL COVERING**

Beautifully Styled Patterns and Consumer-Tested Colorings for Every Room in the House. Just dip in water and apply. No tools, no trimming, no pasting.

HEADQUARTERS for ARTIST & HOBBY CRAFT Week End Decorators & Do-It-Yourself SUPPLIES

Plenty of Copper, Brass and Aluminum for metal-crafters.

Get Started EARLY!

Michigan's Finest Wallpaper Selections

CUSTOM MIXED PAINTS

W. 12 Mile Rd. Open 9-6 daily Except Friday 9-9

Just east of Post Office, Berkley Phone LI 1-6070

LOOKING for Something?

JEWELERS

Classified Telephone Directory

FOR HOME OR BUSINESS NEEDS LOOK IN THE 'YELLOW PAGES' OF YOUR TELEPHONE DIRECTORY