

The fat man and his wife were returning to their seats in the theater after the intermission. "Did I treat on your toes as I went out?" he asked the man at the end of the row.

"You did," replied the other grimly, expecting an apology. The fat man turned to his wife. "All right Mary," he said, "this is our row."

OPEN EVENINGS 'TIL 9 TELEVISION SERVICE
Car Radio Specialists
MI 4-8705

Trained technicians assure you of satisfactory service... uninterrupted TV viewing.

ELECTRONIC SERVICE CO.
550 S. Woodward Open 8 a.m. to 9 p.m. Sat. to 6



BIRMINGHAM HALFBACK TOM BECK SURROUNDED BY CRANE TACKLERS
Beck eluded Cranbrook linemen earlier to score first TD. (Eccentric Staff Photo)

Maples Down Cranes In Grid Opener 19-12

By BOB BEATTY

In their opening game of the 1953 season, Birmingham's varsity football squad defeated Cranbrook 19-12 last Friday night at Pierce field.

The Maples scored their first touchdown near the end of the first quarter. Payson Chapman, Maple right half, carried the ball down to the Crane two and half back, Tom Beck, ran it over on the next play.

Bill Watkinson kicked the extra point, making the score 7-0 at the end of the first quarter.

The Maples were knocking on the Crane's door again in the second quarter but were forced to relinquish the ball on downs on the Cranbrook six yard line.

All through the first half the Cranes appeared to be getting nowhere, and the half ended Birmingham 7 Cranbrook 0.

THE CRANES KICKED off to Birmingham to start the second half. Dave Allen, Maple fullback, returned the ball to the Birmingham 35. On third down Chapman carried the ball for Birmingham's second tally, the downer. Watkinson missed in his second conversion attempt and the score was then 13-0.

During the third quarter, the Maples were able to get the ball down to the Crane 18 yard line but Jerry Wedge kicked on fourth down, John Prendergast, Cranbrook half back, receiving the ball and carrying it to the Maple 38. Cranbrook was able to advance the ball to the Maple 20 but lost it on downs at the third quarter ended.

On the opening play of the fourth quarter, Dave Allen took the ball and ran 80 yards up the middle for Birmingham's third touchdown. The Maple's try for the extra point was blocked and the score stood 19-0 in favor of Birmingham.

DURING THE LAST quarter Cranbrook advanced the ball to the Birmingham 20. The Maple seconds were penalized 45 yards during this series of downs and Prendergast ran the ball over from the 15 for Cranbrook's first score of the game.

His pass for the extra point failed and the score was 19-6. Then, with less than a minute to go, Prendergast intercepted a pass on the Maples' 46 yard line and ran all the way for his second touchdown.

The extra point kick was not good as the gun sounded ending the game.

The Maples play at Mt. Clemens Friday night in the league opener for both teams.

To buy or sell a used automobile, read and use Eccentric Classified Ads.

The geographical range of students extends from New York to California, Minnesota to Louisiana, and out of the country to Venezuela, Brazil, Colombia, Suriname and Italy.

SEE US FOR...

Battery Service

AND

Firestone

TIRES

BOB ADAMS SHELL SERVICE

Hunter at Maple MI 4-9750



WE SAVE YOU TIME AND TRAVEL WITH BANK-BY-MAIL SERVICE

More and more people are finding that banking by mail is fast, safe, efficient, and a great convenience when days are busy. Our bank-by-mail plan makes it extremely easy to do your banking without leaving home or office—and you receive the same friendly, personalized service we give when you call at the bank. Come in and let us show you how easy it is to use this time and travel-saving service.

WABEEK STATE BANK of DETROIT

BIRMINGHAM OFFICE—WABEEK BUILDING

Enhance Your New Home with an **ASPHALT DRIVE**



- Attractive • Economical • Durable

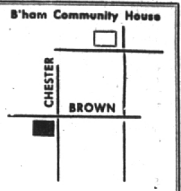
Plan and Build Your Driveway Correctly—Call

ANN ARBOR CONSTRUCTION CO.

Call Maple 5-4601 For a Free Estimate

OLSEN'S MARKET

407 W. Brown at Chester
Midwest 4-1916



One block south and one block west of the Birmingham Community House

Fresh Caught Fish
Fancy aged Rib Roast of Beef

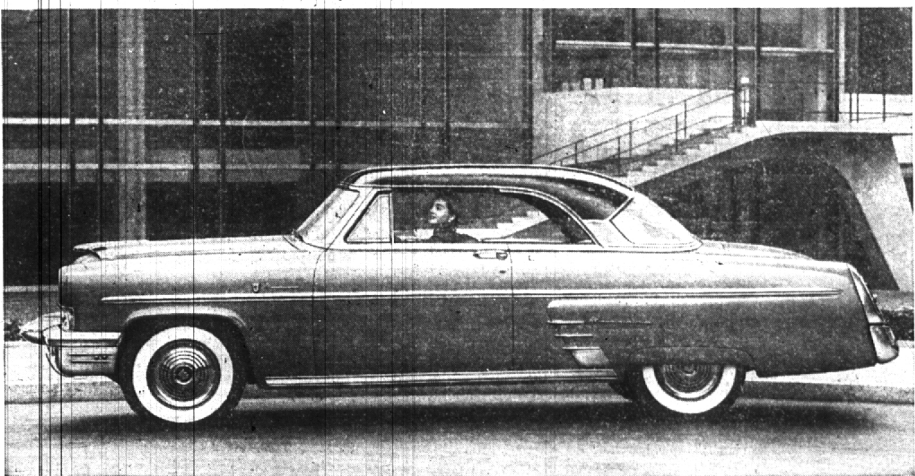
We Specialize in Fresh Dressed Poultry

Fresh Fruits and Vegetables

FREE DELIVERY

ALWAYS PLENTY OF PARKING SPACE
28 Years of Service to Birmingham

Drive the Car that Protects Your Investment Best!



Independent surveys show that Mercury keeps its value highest, longest, in its class. You get back more of the original cost at trade-in time. Here's why...

MERCURY STYLING IS YEARS-AHEAD STYLING
Mercury's fresh, clean "flow-together look"—no bumps or bulges—anticipates tomorrow's design trend in cars, gives you money-saving style protection. You get out-of-date future lines that won't be "dated" for years.

MERCURY ECONOMY IS PRIZE-WINNING ECONOMY
Mercury offers you the most consistent economy record of any car—2 big wins in 3 years (Mercury with overdrive) in official economy tests. Here's economy that you can count on—that's well known, universally wanted and repeated. Here is economy that will help keep your Mercury in big demand year after year.

MERCURY PERFORMANCE IS PROVED V-8 PERFORMANCE
Mercury's famous V-8 engine is by the builders of more V-8 engines than all other companies combined. It is V-8 performance at its thrifty, lively best... with a long lead start on newcomers to the V-8 field. And Mercury's proved stamina and long life keep maintenance costs surprisingly low. Your Mercury will out never longer.

MERCURY OFFERS MORE FROM TRYOUT TO TRADE-IN
More beauty, more luxury and comfort, in short, more of what most drivers want! For example, the greatest

array of optional power features offered by any popular-priced car: power steering, power brakes, electric window lifts, no-shift Merc-O-Matic Drive, gas-saving Touch-O-Matic Overdrive, even a 4-way adjustable power seat for tops in motoring comfort!

Immediate delivery—with Merc-O-Matic—smoothest no-shift drive, specifically designed for Mercury!

BEST TIME EVER TO BUY A

MERCURY

Don't miss the big television hit, "TOAST OF THE TOWN" with Ed Sullivan, Sunday evening, 7:30 to 8:00. Station WJBK-TV, Channel 2.

TOM McDONNELL, INC.

AUTHORIZED LINCOLN MERCURY DEALER

PHONE MI 4-1900 or JO 4-6179

Birmingham
LOCKSMITH Service
Midwest 4-7939
DAY AND NIGHT
CITY-WIDE SERVICE
Auto-Home-Office-Luggage
256 S. Woodward

TYPEWRITERS REPAIRED
New and Rebuilt Typewriters For Sale—Rental
Birmingham Printing
369 EAST MAPLE • MI 4-4740

...RISKY?
THE McCLELLAN AGENCY
Representing
HARTFORD ACCIDENT and INDEMNITY COMPANY
Hartford, Connecticut
Rm. 245-247 Briggs Building
MI 4-2860
FINANCIAL SECURITY IS SECOND ONLY TO HEALTH

Our **TRADE 'N' SAVE** Banners are UP...
SPECIAL TRADE-IN OFFER FOR YOUR OLD RANGE!
TRADE 'N' SAVE
GET YOUR NEW AUTOMATIC GAS RANGE NOW—AND SAVE

We're set and ready to give you the **BEST TRADE-IN OFFER** of the whole year for your old range during this **Gas Range Dealer's BIG TRADE 'N' SAVE** Campaign

Come in—see this amazing **ROPER Gas RANGE VALUE**

Here wrapped up in this modern 30 inch range of tomorrow you have all the features and advantages of a large range condensed into a compact convenient range.
Think of it, only 30 INCHES WIDE... See it, compare it, you'll be amazed! **GIANT OVEN—BIG BROILER**... It's the range you've dreamed about.



THIS SUPREME AUTOMATIC MODEL SHOWN
Only **\$309.75**
OTHER ROPER MODELS FROM **\$154.75**
LESS YOUR SPECIAL TRADE-IN ALLOWANCE
And YOU SAVE IN OTHER WAYS with Gas
A FULLY AUTOMATIC Gas RANGE costs less to buy... less to use... less to install than any other automatic range. GET THE FACTS!
MG-3668-22
CONSUMERS POWER COMPANY