

Academy Offers Six Scholarships

Six memorial scholarship awards of \$750 each are being offered internationally by Cranbrook Academy of Art for the session beginning in the fall of 1954.

Awarded according to artistic merit, the scholarships provide funds for the payment of a year's tuition and a balance which may be used for the purchase of supplies or applied toward the fees for board and room at the Academy.

Applications will be received until Feb. 15, 1954, from painters, weavers, architects, ceramists, metallists, sculptors and designers.

The scholarships were established in memory of Ellen Saarinen, world-famed architect and first president of the Academy, and George G. and Ellen S. Booth, founders of the six institutions forming the Cranbrook community in southeastern Michigan.

Gardens Are Closed

The Gardens of Cranbrook House, open to the public for the past five and a half months, have been closed for the season. Operated by the scholarship committees of Cranbrook School and Kingswood School Cranbrook, the Gardens have been a source of funds to help many boys and girls attend the two schools.

Franklin School Addition to Cost Over \$250,000

Construction on the five room addition to the Franklin elementary school is slated to begin following the letting of contracts for more than \$250,000 by the Birmingham board of education last week, according to Dwight B. Ireland, superintendent of schools.

The general construction contract goes to the Ellis construction company, Detroit, for \$172,429, the lowest bidder.

Mechanical contract went to the low bidder, W. Wilbur White, Detroit, at \$62,500. Approval of an alternate proposal will add \$2,275 to the mechanical contract for the installation of a ventilating system to provide for both the older portion of the building as well as the new addition.

Ireland explained that when the original portion of the building was erected that a gravity type ventilating system was installed. This has since proved unsatisfactory and certain classrooms have been uncomfortably stuffy, he said.

THE NEW SYSTEM will provide air to the rooms from outside of the building which will be heated through coils. Previously the same air was continuously circulated through the heating system.

The increased cost of this ventilating system will be offset by a reduction in cost in the electrical work.

The electrical contract went also to the low bidder, Jones Electric, at \$15,247. Deducted from this amount will be \$2928 which is the saving to be affected by introducing electrical lines to the building by overhead means rather than through an underground feeder.

Total net cost of the construction comes to \$250,053. Added to this will be \$15,004 for architectural fees to Swanson Associates, of Bloomfield Hills, for a total of \$255,056.

ORIGINAL ESTIMATES for the addition were \$195,000.

Ireland stated, "Some people feel that the cost of this Franklin addition is unwarranted in view of the fact that additions at other schools have cost less. There seems to be a feeling that certain areas in the school district are being dealt with more favorably than others."

"I wish to state that all decisions made by this office are made in the interest of the district's children and their needs. No other considerations are involved."

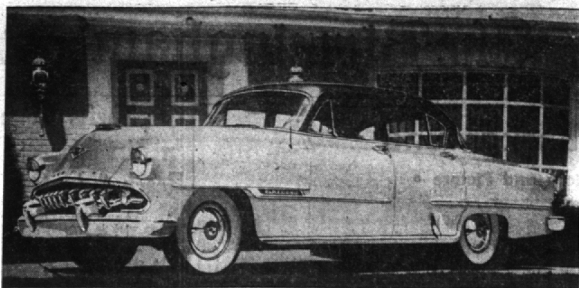
"Our efforts are for the entire school district and we do not give special consideration to any one segment of that district."

According to Swanson Associates, the new addition will include four classrooms, a 40 by 70 foot multi-purpose room with stage, a small kitchen, restrooms, a small clinic, and an additional boiler in the boiler room.

Heads Panel Discussion Of Cost Accountants

Samuel E. MacArthur, 26489 Meadowood, acted as chairman and moderator at a panel discussion before the final forum meeting held by the Detroit Chapter of the National Association of Cost Accountants, Monday, Nov. 2, in the Park Shelton Hotel.

The subject for discussion was "Financial Cost and Tax Implications of Historical and Replacement Cost." MacArthur is Treasurer and Controller of Federal-Mogul corporation.



POWERLIGHT, A FULLY-AUTOMATIC TRANSMISSION is the biggest feature of the new 1954 DeSoto line. Other features of the Fire Dome V-8 4-door sedan pictured above include power steering, power brakes, air conditioning, electric window lifts and glare-resistant glass. The new DeSoto series will go on sale locally Thursday, Nov. 5, at the W. A. Caltrider, Inc., 880 So. Woodward.

Academy of Art Pottery Display Here Three Weeks

Selected pottery from one of the largest and most famous ceramics centers in the world will be on display from Nov. 10 through 29 at the Museum of Cranbrook Academy of Art, Eva I. Galting, museum director, has announced.

Called "Artists and Potters of Vallauris," the exhibition will consist of about 80 works done in Vallauris, center of the French ceramics industry. Many of the objects were lent by leading museums of France.

Although the little Riviera town near Cannes had for centuries been known for its fine pottery, it did not become world famous until 1948 when Picasso left his Paris studio to settle down in the southern climate to work in one of the local ceramic shops. Some of the potters he designed there are in the current exhibition.

Other artists followed Picasso

Promoted To Corporal

Word has been received by Mr. and Mrs. Charles A. Thomas, 622 Hupp Cross, that their son, Charles A. Thomas, Jr., has been promoted to the grade of corporal at the Second Marine Aircraft Wing, Cherry Point, N. C. Thomas, who entered the Marine Corps on March 21, 1952, graduated from Birmingham High school and attended Michigan State College before entering service.

Public Sale

Not an Auction — All Items Priced

Household Furnishings

Mr. and Mrs. R. L. Spitzley

26 Renaud Road
Grosse Pointe Shores
(N. of Lake Shore Road)

Sunday, November 8th. from 10 A. M.

SALE CONDUCTED BY
H. O. McNIERNEY
Appraiser 421 Book Building
Woodward 1-9085

LE COULTRE FUTUREMATIC

ENGINEERED TO BE THE MOST ACCURATE
SELF-WINDING WATCH
IN ALL THE WORLD

Gold-filled case \$99.50 F.T.I.

*With pride and pleasure,
we present the first New watch
of the century.*

- ★ powered by constant force
- ★ it cannot run down
- ★ it cannot overwind
- ★ not even a winding stem
- ★ and it sets to the second

News of this new Le Coultre watch leaked out a year ago. It appeared unbelievable. The watch itself outdoes the sensational rumors about it. It is the first new watch of the century with its exceptional accuracy built right into a completely original design. It will be years before production catches up with world demand, for this is a watch of the highest Le Coultre precision. But if you act now, you may be one of the first to own one—a treasure and prize it over the years to come.

**Engraved Gifts
are FOREVER remembered**
ENGRAVING DONE ON PREMISES
All Watches Purchased From Us Engraved
Free of Cost

KINCAID'S MI 4-7830
JEWELERS

35 Years Experience In
Watch Repairing
Guaranteed, Dependable Service

Custom-tailored for Jacobson's by Bartlay, Ltd. Washable, comfortable-fit SPORT SHIRTS

Trim, masculine and skillfully tailored... sport shirts of fine quality, with single-needle construction and no-shrinking, no-fading wearability. Make your selection from our outstanding group of French flannels, ginghams, basketweaves and other handsome fabrics.

A. The Dorset. Yellow, tan, blue or grey French flannel tattersall check. 13.50	B. The Danzig. Gold, blue or rust windowpane overplaid basketweave. 11.95	C. The Roy. Charcoal, navy or blue miniature tartan plaid gingham. 7.95	D. The Beacon. Blue, wine or charcoal overlines on silver background. 8.95
---	---	---	--

MEN'S WEAR STREET LEVEL

every wardrobe needs the beauty of soft, supple HANDSEWN LEATHER GLOVES

First on your Christmas gift list, and on your own personal list of accessory necessities... sleek leather gloves, luxurious to see and wear.

- A. Tailored white, black, brown, navy or beige doeskin. \$6.
- B. Table-cut genuine peccary pigskin gloves, hand-stitched with contrasting detail. Oatmeal or cork. \$5.
- C. Unlined capeskin shorties with scalloped, beaded cuffs. Black or brown. \$6.
- D. Unlined capeskin with trapunto detail. Black, brown, white, navy or beige. \$5.

GLOVES STREET LEVEL

USE YOUR CHARGA-PLATE®