

Have You Met . . . Dr. and Mrs. R. Hamilton White of 552 Moberg drive, who moved here from Bloomfield Terraces last

month? They have three children, Craig Sturgis, age 4; Candace Ellen, age 2; and Phoebe Marjane, age 1. A physician and general

practitioner, Dr. White has offices on Hamilton avenue. He was graduated from New York Medical college and is a member of Alpha Kappa Kappa Medical fraternity and Oakland County Medical society.



MICHIGAN'S grand matron, OES, Evangeline Weckler, (extreme right) pauses for a brief chat with the associate matron, Ilean Sweet, and matron, Isa Hein, before presenting the new Eastern Star unit with its charter. In becoming a regularly chartered member of the Grand Chapter of Michigan, the group will be known as "Southfield Chapter, OES, No. 519." Meetings are held in the Birmingham Masonic Temple until a suitable temple is obtained in the Southfield area.

You are cordially invited . . . to attend a Free Lecture on Christian Science

ENTITLED "Christian Science: The Meeting of the Letter and the Spirit" BY MARY C. HOLLOWAY, C. S. of Shreveport, La. MEMBER OF THE BOARD OF LECTURESHIP OF THE MOTHER CHURCH, THE FIRST CHURCH OF CHRIST, SCIENTIST, IN BOSTON, MASSACHUSETTS. IN FIRST CHURCH OF CHRIST, SCIENTIST, BIRMINGHAM Chester and Willets Street THURSDAY EVENING, DECEMBER 3, 1953 AT 8:15 Doors Open at 7:15 P.M.

Maps Illustrate Racial Discussion

"What has race to do with the political difficulties of the world?" "Race as a scientific factor" and "Race as a psychological factor in our world setup" will be included in continuing race discussions at Rath Shain class on international affairs. Mrs. Colin Campbell will be the reporter for Dec. 1 and Mrs. J. E. Wagner will report on Dec. 8. The discussions will be illustrated with maps of the distribution of world population. The class will adjourn for the holiday season after the Dec. 8 meeting and resume on Jan. 5.

Have You Met . . . Former Royal Oakers Mr. and Mrs. John M. Tracey, now living at 255 Ravine road? Tracey is a rate analyst in the Chevrolet division of General Motors corporation. They have one child, Bettina, age 22 months.

Member of ROTC Team Robert C. Jackson, son of Mr. and Mrs. Lucius J. Jackson of East Lincoln avenue, is a member of the special 16-man drill team of the quartermaster ROTC unit at Western Michigan college, Kalamazoo.

Choose LAMPS for Christmas Giving Layaway if desired

LAMP CORNER

2610 N. Woodward Royal Oak LI 3-4493 at 12 1/2 Mile Rd.

E. O. M. Bargains Galore!!!

Kling Solid Cherry Bed, Double Dresser and Mirror \$188.00 Fine quality hand rubbed finish. Floor Sample. Reg. \$235.00

Kroehler Charles of London Tweed Sofa \$159.00 Cushioned Reversible. Spring filled cushions

Lawson Sofa—Foam Rubber Construction \$219.00 Made by Pennsylvania House. Unusual Value. Floor Sample.

Knotty Pine Round Extension Table by Unique \$57.00 Hand rubbed extends to 60 inches. Closed, 46 inches. Sample.

Chairs or Rockers, Solid Maple \$59.00 Floor Samples. Loose cushions for comfort. Cheerful patterns to choose from.

Solid Cherry Drop Leaf Dinette Set, Five Pieces \$198.00 Sturdy fiddle back chairs and oval table. Size 14 x 60, extends to 96 inches. Reg. \$279.00. Floor Sample.

Pennsylvania House Triple Dresser and Mirror \$195.00 Solid Cherry Collector's finish. Twelve roomy drawers. Reg. \$243.00. Sample.

Wing Chair, high back, Colonial beige tapestry print \$89.00 Custom built. Antique nails, loose reversible cushion. Original price \$109.00.

Solid Maple Sofa \$88.00 Early American print. Six loose cushions for extra comfort. Was \$125.00.

Bachelor's Chests \$55.00 Solid Maple, three roomy drawers. An ideal utility piece.

Powder Table, Solid Cherry \$86.00 Floor Sample, slightly marred. 1 only. Original price \$129.00.

Solid Maple Poster Beds \$49.00 Kroehler made in full or twin sizes. Reg. \$69.00 value.

Cranberry Scoop Pine Magazine Racks \$5.55 Extra Special! Only fourteen available.

Bethel Knotty Pine Drop Leaf Table \$134.00 Hand rubbed, distressed finish. Graceful Spade leg. Table closed, 25 x 14 x 72, extends to 96 inches. Floor Sample. Reg. \$179.00 Value.

Swanton Hutch Base, Knotty Pine \$159.00 Authentic reproduction. 53 inches long. Reg. \$219.00. Hutch Top for Base \$52.00. Samples.

Guilford Hutch Base and Top Knotty Pine \$179.00 4 drawers plus cabinet with shelves. Length 42 inches. Reg. \$238.00.

Clearance, New England Knotty Pine Room Group 1/2 off Includes Drop Leaf Tables in three sizes—Buffets, Hutch and China Cabinets. Fine furniture, New England made and hand rubbed—all pieces floor samples.

Pine Snack Trays \$3.95 Antique rubbed finish. Hand crafted.

Solid Cherry Pennsylvania House Drop Leaf Table \$133.00 Collector's finish. Spool legs. 27x46x75 closed, opens to 96 inches. Sample.

Durham Bridge Chairs \$2.44 Easy fold. Leatherette seats in choice of colors. An Early Bird Special!

Solid Maple Sprague Love Seat \$98.00 Loose Cushions for extra comfort. Reg. \$139.00 Value. Sample.

News About GIRL SCOUTS

TROOP 328—ADAMS Girls in this troop recently celebrated their troop birthday with a party planned by Mrs. George Abdo. Members are Cheryl Abdo, Barbara Cronise, Mary Gologly, Virginia Grison, Dianne Kemp, Judy Lester, Peggy Lourie, Leslie Neal, Vicki Parks, Sharon Redo, Kathy Severs and Wendy Westrate. Leaders are Mrs. E. J. Louie and Mrs. Hugh Gologly. At the next meetings the girls will work on Christmas gifts for their mothers.

TROOP 310—WING LAKE Scouts have been making realistic nativities and place cards decorated with shells for Christmas gifts. At the last meeting badges were given to those who earned them, with almost each scout receiving one. Sandra Kovach and Paul Hilly brought nibbles at the last two meetings.

TROOP 329—ADAMS This troop has been making tray favors for Thanksgiving for children in the Farmington Police center.

TROOP 476—QUARTON Mrs. Mitchell opened her home to the troop for investiture of two new Brownies, Lynn Mitchell and Elizabeth Wullenberg. Refreshments were served. A few weeks ago the troop had a cookout in the backyard of Mrs. Lawrence Falvey.

TROOP 482—ADAMS Brownies were invested and received their pins and membership cards at a ceremony held in the backyard of one of the girls. Invested were Jacqueline Bacon, Penny Braun, Roberta Beadenstine, Carolyn Graham, Ann MacKenzie, Marilyn Mason, Marilyn Perry, Elizabeth Rodgers, Donna Shampuck, Barbara Smith, Virginia Stehle and Jayne Thorne.

TROOP 303—PIERCE Brownies have been making wall pictures for their rooms recently. On Nov. 11 the troop birthday party was held at the home of Barbara Ann Portwood. Guests included Mrs. Taggart, Mrs. Shoup and Mrs. James, the troop committee, and Patricia Taggart's grandfather from Crystal Falls. Cupcakes and punch were served at a table decorated with a birthday cloth.

TROOP 222—BALDWIN The following girls received their pins and cards at investiture services Nov. 17: Nancy Beck, Cynthia Detmers, Ann Featherstone, Nancy Koons, Kathleen O'Meara, Linda Purdy, Betty Rush, Sally Rush, Katherine Savage, Jean Schwimmer, Donna Thorne, Ellen Webster and Ethel Wood. Mothers were invited and sandwiches and punch were served by hostesses Ann Featherstone and Betty Rush. The girls wore their Brownie uniforms at this meeting for the first time. Leaders are Mrs. Webster and Mrs. Cowan.

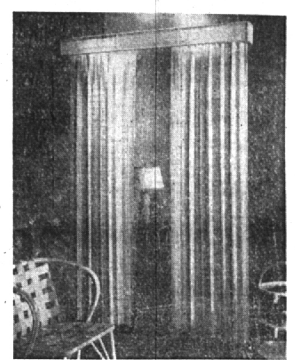
TROOP 353—BALDWIN Films on conserving bird nesting and how birds help man were viewed by Scouts in connection with their work toward bird badge. At one meeting the girls danced the Bunny Hop, the Hokey-Pokey and the Virginia Reel. Penny Hewitt and Pauline Craig set up the Girl Scout table at the Community House Open House and Kenny Cowan, Meta Reynolds, Barbara Sommer and Christy Shad acted as hostesses.

Kitty Doyle arranged to send boxes of cookies to the Old People's home, which will be delivered in December by Stephanie Smith's mother. Another requirement in the sewing badge was passed by making Christmas aprons, with the help of Mrs. Shannon, Mrs. Forbes, Mrs. Rey and the leaders, Mrs. Schaefer and Mrs. Haack.

Girls receiving troop badges were Janina Browning, Jean Buchanan, Kitty Doyle, Sue Forbes, Sandy Haack, Sue Hapke, Mary Kamin, Patty MacFarland, Georgia Saunders, Sue Schaefer, Barbara Shannon, Stephanie Smith and Nancy Williams. Judy Abery is a new member of the troop.

Lincoln 3-1656 • Lincoln 6-3311

Woven-Wood and BAMBOO DRAPERIES CORNICES SHADES Our counselors will call with materials, advice and samples . . . day or night.



Quinn's inc. 2875-N. WOODWARD

THE NEW WINDOW SENSATION . . . these beautiful bamboo matchstick drapes that bring new color and soft-diffused light into your every room. Quickly installed, easily washable, durable . . . designed for modern living. Custom-made in a wide color variety.

Advertisement for Huston Hardware Co. featuring toys, games, and tools. Includes illustrations of a toy car, a doll washing machine, and various toys like tractors and rifles. Text: "BOYS! GIRLS! SANTA'S HERE WITH toys", "MEN! BOYS!", "MAKE THESE WITH MANY OTHERS FOR FUN OR PROFIT", "with a SYNCRO ELECTRIC PORTABLE JIG SAW \$24.95", "Red Fire Engine 15.95", "Doll Washing Machine 2.39", "HUSTON HARDWARE CO. OUR FORTY-FIFTH YEAR", "265 N. Woodward Hours: 8 to 5:30", "Midwest 4-7330 Closed Wed. 1 p.m."

SHOP EARLY FOR MANY OTHER E. O. M. VALUES NOT LISTED

THE Triangle FURNITURE CO. Colonial Shops 128 SOUTH WOODWARD BIRMINGHAM 220 WASHINGTON DRIVE ROYAL OAK