

Maple Runners End In Fourth Spot In Regional

Competing in the class A track and field regionals for the first time, Birmingham placed fourth place behind Ypsilanti and Highland Park.

Far out in front was Pontiac, capturing eight first and 11 seconds and thirds in total 12 men and ten relays to state.

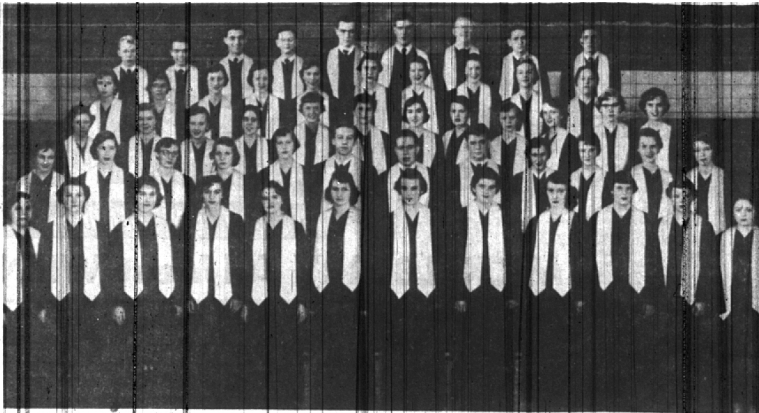
The Maples Jim Harger won the 120 yd. high hurdles in 1:3.9 and Ken Fowler the pole vault at 10 ft. 9 ins.

Other Birmingham men going to state are Hank Curtis and Tom Ricketman, shotput, and Mickey Plumstead, high jump. Plumstead high jumped 5 ft. 11 1/2 ins. for the best Birmingham performance.

Alonzo Harris, Pontiac, won the 100 yd. dash in 10.0 tying the old regional record set in 1949; the 220 in 22.3 breaking the old record of 22.5; and the broad jump at 20 ft. 6 1/2 ins.

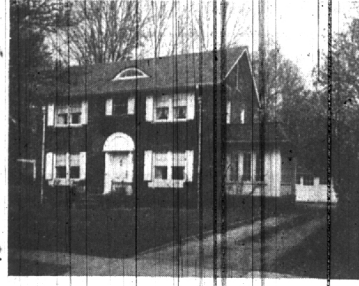
Willie Neely, Ypsilanti, broke the high jump record of 6 ft. 1 in. set in 1959, by leaping 6 ft. 1 1/2 ins.

Behind Pontiac's 88 points were Highland Park 36 1/2, Ypsilanti 32 1/2, Birmingham 10, Waterford 10, Wayne 1 1/2, and Berkley 0.



MEMBERS OF THE BIRMINGHAM HIGH SCHOOL CHOIR POSE FOR CAMERA Combined choir, glee club and ensemble in concert tonight

Serenity, Comfort and Stability



Lovely Garden, a Charming Colonial, an Ideal Residential Area. This is a combination not easily obtainable in a 4 Bedroom, 2 bath home at a moderate price.

Modern kitchen with large breakfast bay is an outstanding feature. Too, you'll enjoy the sunroom for that extra living space so necessary for television.

Today is none too soon to call us for an appointment to see this outstanding value.

\$25,500.00

WALSH, JAMES & WASEY Co.

REALTORS
431 S. Woodward Avenue, Birmingham
Midwest 4-6500 or Detroit phone JORDAN 4-6033

Combined Voices Join In Concert Tonight At BHS

The high school choir, glee club and ensemble will present the spring concert tonight at 8:15 p.m. in the high school gym.

A two-four session Monday concluded the choir's rehearsals with guest conductor Hayden Morgan who will conduct four of his own compositions.

The Wednesday Thursday ensemble will sing Down in the Valley, an American folk song; Beautiful Brown Eyes, by Arthur Smith and Alton Belmont; The Little Sultan, a German folk song; and Robin in the Hood, by Noddy Cain.

The girls' glee club will sing Let's Dance, by Wayne Howarth; Kings and Sages, by H. W. Elliott; A Snow Legend, by Joseph W. Cokley; Someone's Child is Sleeping, by Peter Dykema; Sleep and Rest, by W. A. Mozart; and Lady Trodian, an American folksong.

Will You Remember, from "Maytime" by Siegfried Romberg; Remember the Day, by Phyllis Hoffman; and Sentimental Journey, by Screen Broken Home, will be done by the symphonettes.

The choir will conclude the program with The Builder, by Charles Cadman; Dere's No Hidin' Place Down Here, a Negro spiritual; Sing to My Lou, an American folksong; The Gandy Dancer's Ball, by Weston Howard; Around the Corner, by Josef Moravik; No Man is an Island, by Whitney Kramer; and Battle Hymn of the Republic, by Horace Staff.

Lawrence E. Smith
Landscape Design and Construction
135 N. WOODWARD
in the Wilson Building
Phone MI 4-2036

Cranes Win No. 8 Against Nichols

DON SLOTKIN

Behind the steady five-hit pitching captain Bill Soter and Bob Newey, the Crane baseballers continued their Interstate League misdeeds by downing Nichols School 7-1 at Cranbrook. The Blue and Grey tallied five times in the first three innings to coast to an easy victory.

Cranbrook now leads the league with a record of three wins versus no defeats, with but one more league game to play with Shady Side on May 30th at Pittsburgh. The Crane overall record now stands at eight wins in nine decisions.

Proscenium Names Its New Members

New members of Proscenium attended their first meeting Tuesday and were initiated by the club. New members were chosen on the basis of letters of application with Meridille Knights, Ivaie Jenkins, Sae Marsh, Paula McDonald, Jim Barr, Bob Latscomb, Carole Goldstein, Cole Dean and Winnie Coffin, the initiators of proscenium, being all who wrote letters. They were accepted.

Others are Janice Cooper, Marylene Crawford, Susan Debevoise, Shirley Dushel, Joan Fairbairn, Ann Freeman, Joan (Anaway), Karen Grier, Ivaie Jenkins, Margaret Glass, Mary Good, Karen Grooms, Thor Halvorson, Nannette Hainwood, Cheryl Harris, John Hayes, John Helgeson, Jim Hogan, Bill Holmeyer, Alice Holmes, Linda Hunt, Carole Harris, Pat Jackson and Howard Johnson.

LYNN BENNETT, Carol Klein, Ulrike Klepper, Howard Knorr, Darlene Kopf, Judy Lundquist, Lea Mae Marsh, Bill Martin, Angela Matthews, Jane McDaniel, Betsey McQueen, Carolyn McLesse, Mary Nelson and Margorie Marshall. Fanny Nelson, Dale O'Connor, Sandra Parrish, Dick Perry, Mariyah Peters, Jane Racine, Robin Roehl, Dorothy Schwimmer, Kitty Schoonmaker, Carolyn Shattuck, Martha Sharples, Doris Smith, Pat, St. Sever and Sharon Stashoff. Betty Stoddard, Bill Stridger, Virginia Thomson, Adele Tomber, Nancy Walser, Nancy Winberg, Sally Wootton and Alice Richards.

Cut Membership In Assembly Club

Beginning next year the Assembly club will have a new distribution of membership.

At present there are 17 seniors, 13 elected and three honorary members; ten juniors, six sophomores and four freshmen. Seniors hold a majority in the club, with 17 of 30 members. It is felt that the seniors are very busy, cannot adequately take care of their duties, and therefore should not hold such a large majority.

The membership distribution next year will be nine each from the junior and senior classes, seven sophomores, three freshmen, and three honourees. This will reduce the size of the club to 31.

Future Nurses Club Fete Mothers At Tea

A tea for their mothers was given last week in the little apartment by members of the future nurses club.

All teachers were invited and Mrs. and Mrs. Boss A. Wagner attended.

A white and gold pin was given to Miss Frances Martin, school nurse and club adviser.

BRILL ELECTRIC CO.
Residential — Commercial
Light Industrial
Wiring
Prompt Service
Phone LI. 6-3500

Student Congress Picnic June 4

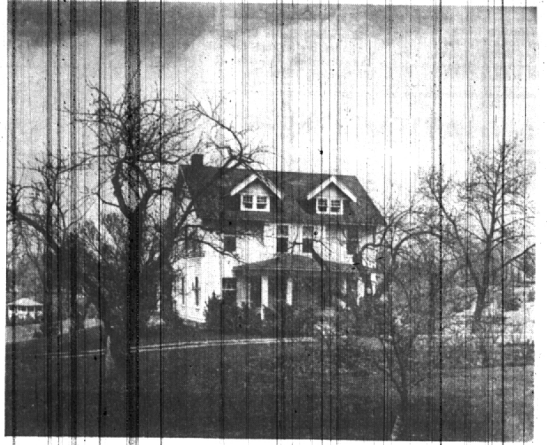
Recently plans for a picnic at Orchard Lake June 4 were discussed by Student Congress.

For a small fee, students will be provided with food and entertainment. The picnic will be from five to nine with swimming for all during the first two hours.

Heads of the food committee are Rita Skaaren and Sally Whitman.

L. C. Cowen, Broker & Appraiser of Realty
HAS THE OPPORTUNITY OF OFFERING SOME EXCEPTIONAL CENTRAL BUSINESS PROPERTY ALL WITH AN ASSURED INCOME OF 10% or better on the investment, when properly handled. Prices from \$15,000 to \$250,000.
Available at home 710 Oakland before ten and after six daily

SPLENDID VALUE



The value in this roomy, remodelled Colonial cannot be surpassed and rarely equalled. Consider its size:

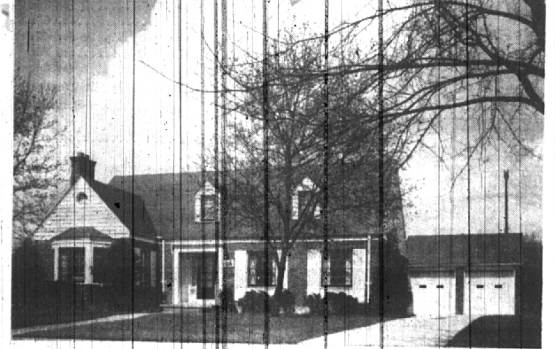
- Living Room 17x33 (fireplace... bookshelves... long, friendly windows)
- Dining Room 12x23... view the expansive lawn sweeping to the beach
- Farm-sized Kitchen... completely modernized.
- 4 generous Bedrooms... 2 Baths (one combines a Dressing Room)

Summer and Winter enjoyment alike... all the fun offered only by lake living... new pleasures every day of the year, whether it be swimming, fishing, skating, boating or the simple joy of watching the cherries and magnolia bloom.

Vaughan School... low taxes. The best part: only \$7,500 down. Let's see it today!

CALL
MAX BROOKER INC.
REALTORS
RE-ESTABLISHED 1955
300 S. Woodward Ave. Midwest 4-6700

POINT OF DISTINCTION



Every home has its points of distinction—here is one that "HAS IT" from the foundation up. These points appeal to you if you like:

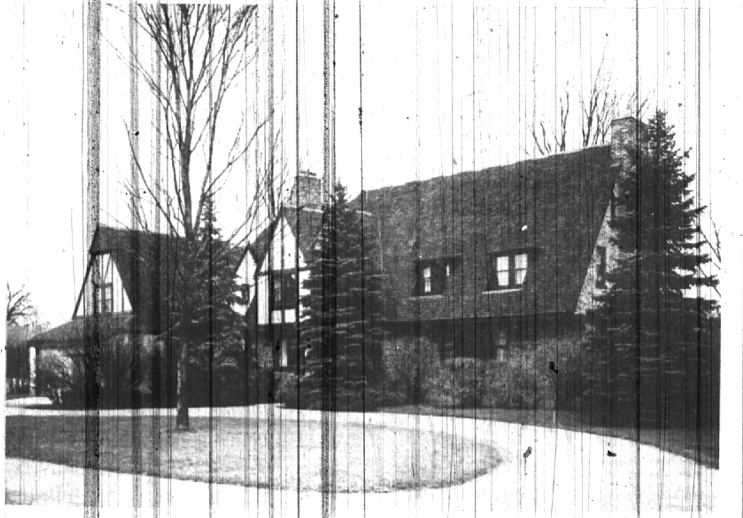
- 1. A large LR and fine library and full bath on the first floor.
- 2. Large bedrooms and full bath and cedar closet on second floor.
- Entire house carpeted and tastefully decorated.
- Charming LR with typically colonial fireplace and large screened porch adjoining.
- To cook in the cheery kitchen is a joy and there is a large separate breakfast room.
- The recreation room space is 13x33 with lavatory and of course storms and screens, awnings, venetian blinds and drapes are included.
- A sound investment for any family!

\$38,500

BENJAMIN & STEPHENS, INC.

REALTORS
250 So. Woodward
MI. 4-3232
Birmingham, Michigan
JORDAN 4-5728

Bloomfield Estate...



This beautiful home, modern in every respect, has all of the facilities to afford the most gracious living for the larger family.

In addition to the spacious first floor area, there are six bedrooms and three baths.

Beautifully landscaped 2 acres. Low taxes. Birmingham school bus stops at the door. \$49,750.

WATT, MANUEL & SNYDER, Inc.
Realtors
Robert F. Watt Ralph Manuel M. E. (Shorty) Snyder
298 S. Woodward 298 S. Woodward Birmingham
Midwest 4-6300