

Quality Potted Roses



For Your Garden

- | | |
|-------------------|-------------------|
| Doublons | Francis Scott Key |
| King Midas | Christopher Stone |
| New Dawn | New Yorker |
| Paul's Scarlet | Poinsettia |
| Chrysler Imperial | Rubinat |
| Ma Perkins | Peace |
| Soeur Therese | Forty Niner |
| Sutter's Gold | Talisman |

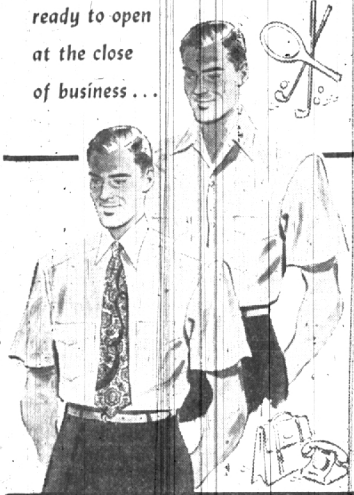
AND MANY OTHER VARIETIES

FERRAND NURSERY COMPANY

2971 South Blvd. East
(one mile east of Adams Rd.)
phone FEderal 2-3689

"QUALITY NURSERY PRODUCTS SINCE 1870"

ready to open
at the close
of business...



our

DRESS 'N' PLAY SHIRT



There's no need to change into a sport shirt after business hours when you wear Manhattan's "Dress 'n' Play" shirt! Just take off your necktie, open the collar, and you have a neat, well-tailored open-neck sport shirt. Get a supply of these to see you through the summer!

Dickinson's

WABEEK BUILDING BIRMINGHAM SAGINAW AT LAWRENCE PONTIAC

GOW'S LITTLE ACRE



16 PC. STARTER SET FOR \$9.00
IN RED WING — VILLAGE

GREEN OVENWARE

BAMBOO PORCH FURNITURE
RUSSELL WRIGHT GLASSES
SUMMER PURSES & BASKETS

COR. LIVERNOIS and
SQUARE LAKE RD.

Open Sundays — Phone MUberry 9-1035

Explains Reasons Behind Meeting On Area Problems

Reasons why inter-community planning of water supply, sewage, drainage, and even garbage disposal are required were outlined today by Joseph D. Savery, Ferrand president of the Oakland Citizens League, in explaining why the League is sponsoring a public mass meeting at the Birmingham Community House May 28 on area-wide problems.

"Cooperation of government officials, business leaders and citizens is required to solve inter-community problems," Savery said. "Too often, communities are interested only in their own problems. We feel that a non-partisan organization, functioning on a county level instead of a local one, such as the Oakland Citizens League, can do much to bring together interested groups and aid in getting problems top priority for any one community."

"INDUSTRY HAS spread rapidly into Oakland County. We have become a growing, thriving suburban area. We must take pride and plan for further expansion."

"Just one community development, such as opening of the J. L. Hudson Co. Northland Center, creates huge problems of water supply, police and fire protection and traffic. The added burdens placed on our overtaxed schools caused by swelling populations has already reached the critical point."

"Expansion is a business program. We must treat it like one, on a business-like basis. Perhaps the Oakland Citizens League can act as a catalyst in helping find solutions to many of the problems every community now faces."

AT THE MASS meeting, to which the general public, as well as city and county officials have been invited, a panel of experts will outline some of the problems involved. T. Letyard Blackman, Wing Lake, executive director of the Detroit Metropolitan Area Plan

Because considerably more time will be required to assemble next week's special

75th Anniversary Edition OF THE ECCENTRIC

all headlines for news copy display and classified advertising must be advanced one day—49

Monday at 5 p.m. Early Copy Will Be Appreciated

Commission will act as moderator. Milton Hilbert, Department of Health, Wayne County, will discuss sewage problems; Mayor Vernon Horn, Royal Oak, will speak on water supply problems; Donald M. Oakes, Berkeley city manager, will discuss garbage disposal. Louis H. Schimmel, Pontiac, director of the Michigan Municipal Advisory Council, will talk on public financing; and George N. Scrubb, Pontiac, director of the Oakland Plan Commission, will speak on area-wide planning.

Cities, County Share In Returns

The City of Birmingham's share of net receipts from the State Motor Vehicle Highway fund for the first quarter of 1953 will be \$18,063.31, the highway department has announced.

Bloomfield Hills will receive \$6,387.29 after a deduction of \$613.44 in mileage due to a previous overpayment. Oakland County will gain \$1,088,145.16 of the total \$57,836,283.42 being distributed by the state.

Furniture For Sale

- Professional Chairs \$15.00
- Mahogany Day Bed \$60.00
- Antique Chair \$50.00

Hand Painted Plates and Tea Sets—Bamquet Cloth \$100.00.

1666 Coplin, Detroit (near Forest)

For Appointment Call ED 1-0961

Magic

You'll say when you see the way those unwanted pounds melt away!

Now, thanks to modern nutrition you can LOSE WEIGHT SAFELY AND FOREVER.

See for yourself. Take advantage of our FREE DIETARY INFORMATION SERVICE. . . One of the many services of

ROYAL OAK NUTRITIONAL PRODUCTS

115 So. Main Royal Oak Lincoln 1-6820

If you shop at St. Oakland County's Largest Health Food Center

STERNA'S

for WHIRLPOOL WASHERS AND DRYERS FREE CUSTOMER PARKING In Rear of Store Open Friday evening to 9:00

FIRST LINE

Firestone 6:70 x 15 Deluxe Champion TIRES \$17.25 plus tax

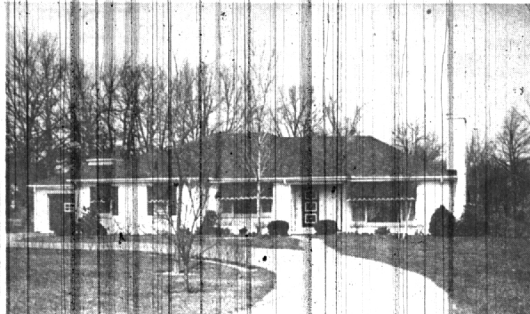
BOB ADAMS SHELL SERVICE

Hunter at Maple MI 1-9750



MEMBERS OF RUTH SHAIN'S International class reunion last Thursday at the Community House joined in welcoming speaker Dr. Nicholas Nyaradi, last Minister of Finance of pre-satellite Hungary (second from right). Others in the picture, from left to right, are Mrs. George Green, William J. Scripps, director of WWJ; Mrs. Ruth Shain, and Mrs. Carson Brigham. (Eccentric Staff Photo)

A Perfect Jewel In A Perfect Setting



2120 REDDING ROAD

Almost two beautifully landscaped acres with over 10,000 just spent on birch, fruit, and shade trees; 1,300 tulips and many shrubs including a big circular drive. Just half way between the Quarian and Cranbrook schools with 400 feet touching Bloomfield Village; the property is large enough for horses, swimming pool or a tennis court.

VERSATILE is the description of the floor plan.

- Living room 19x27 with \$26.00 per yard rubber-backed carpets, beautiful cornices and traps. • Glazed and heated porch. • Kitchen with dishwasher, disposal and formica counter tops. • Panelled den.
- Three bedrooms, or two and full dining room. • Bedroom and bath up. • Full recreation room. • Gas heat at \$180 for season.

THE HOME IS IN PERFECT CONDITION and because of its exceptional location gives all the advantages of country living with city conveniences.

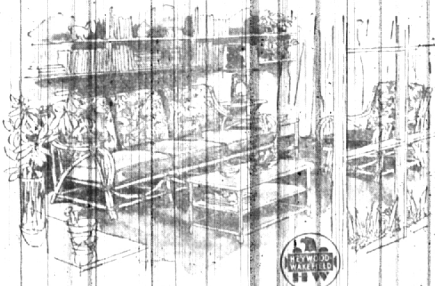
This wonderful home can be seen at your convenience.

Howard T. Keating

MAPLE CORNER LAHSER

MI 4-5900

Popular.. Versatile Ashcraft



... by

Haywood - Wakefield

See this sturdy open-stock group on our floor today. Frames made of solid steam-hept ash. All the season's newest and most attractive fabrics.

Sectional \$124.95
Love Seat \$92.50

Tub Chair \$54.95
Side Chair \$18.95

Card Table \$34.95
Tea Wagon \$47.95

Open an Account 90 Days Same as Cash

LEWIS Fine Furniture

235 Pierce St. Phone MI 4-4920 Pontiac Store 62-70 South Saginaw Street, Pontiac

DETROIT TRUST CO.

PROMPT SERVICE ON MORTGAGE LOANS

Our service is prompt, from application to closing.

Our thorough understanding of the problems involved saves both time and money for the borrower. More than fifty years of experience.

FORT AT SHELBY WO 2-5670