

THIS IS AN ARCHITECT'S DRAWING of the building occupied by Harold Turner, the local Ford dealership, after the remodeling and overhaul job now in progress is completed. The remodeled structure will have a completely modern front and a new service entrance will be built into

DOWN TO EARTH

Sunny Windows Need Special Plant Types

By ALICE WESSELS BURLINGAME
Special Writer for The Birmingham Eccentric

When we visit with owners whose new homes have large picture windows we often assume they have exposures which call for shade loving house plants with large lush leaves. When such a window has "too much sunlight" these leaves are apt to burn.

So now let's talk about a large, hot picture window suitable for large plants which are safe in the sun.

We have geraniums which like lots of sun and being kept on the dry side. You have a choice of two nice ways to follow the geranium trail. One choice of geranium culture is to develop a geranium tree.

Select a specimen which has one upright stalk and not a bamboo stalk or one of similar style, by its about five inches taller than the geranium. Pinch off all side shoots, leaving only a point.

PECK'S
Cash and Carry
Plain Dresses, Suits, Topcoats
\$139
CLEANED and PRESSED
For Delivery PHONE MI 4-7724
WOODWARD-NEAR MARLE

BIRMINGHAM
FRUIT CO.
124 - Midwest
N. Woodward 14-4030
CHOICE MEATS
FANCY IMPORTED
AND DOMESTIC
GROCERIES
FREE DELIVERY
Free Parking at Rear of Store

the new "neat look" ...

THE IVY LEAGUE
by STETSON
Look at it from every angle. The Ivy League gives you that neat look—trim, crisp, wide-awake. The face-flattering narrow-brim, the tapered crown and the stylish leather crease make it the favorite of men with a future. \$10

Dickinson's
BIRMINGHAM PONTIAC
WABEEK BUILDING SAGINAW AT LAWRENCE

the extreme left corner. New offices and a greatly enlarged show room will be a feature and many innovations are also being planned for the service department, according to Bud Truba, general manager of the firm.

Citrus trees will provide a nice effect and many will bear fruit.

THIS TIME OF year the placing of trees and going to the nurseries to buy the trees of our choice should be on the agenda. Don't be sold substitutes for your needs. The sassafras (Acer Ginnala) has a pyramidal outline, will grow about 15 feet high, will be red in fall. It is good for screening and has a shrub-like character.

For erosion control, the red pine (Pinus) will like swampy land and the fall red coloring is very late.

When you need a rapid grower and have a poor location, the white oak (Quercus) is a good choice.

The Washington Hawthorne will grow around 25 feet high and reward you with great quantities of brilliant, showy fruit until

winter. It is the best of the hawthornes.
The American red bud tree has heart shaped leaves. The arrangement made with them gives an exotic effect which is my estimation would surpass many made with flowers.

LABURNUM VOSSI will give you a tree 15 feet high with yellow flowers in June which look like wisteria. This tree gives a nice vertical accent in a flower bed.

The European plane tree, one of the large shade trees, has an interesting bark.

Two of the ornamental cherry trees can compete with our Birmingham flowering cherries for beauty. The saragat cherry has a profusion of light rose flowers. Its leaves are dark green with bronze tints. The Shirobana or bigon cherry has an abundance of white flowers and is the variety identified with the Japanese festival cherry.

Oak trees can be identified by the lobing of the leaves. The white oak group has rounded lobes while the widely lobed and pointed projections belong to the black oak varieties.

Recently Detroit was host to the Michigan florists convention and there were two items mentioned especially.

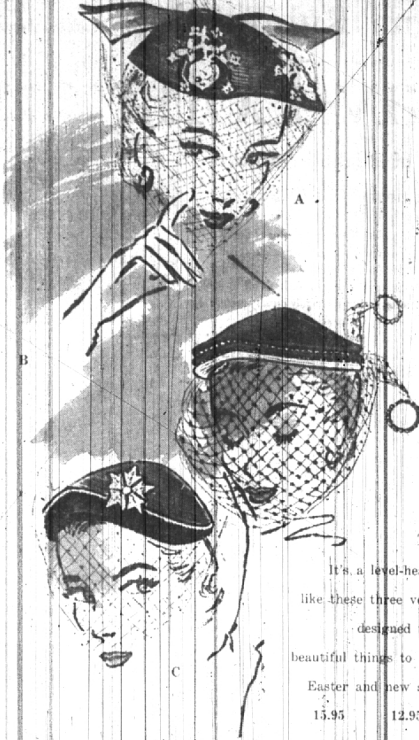
One was a method of putting a drop of fluid in a leaf. Then take a cloth and spread it over the leaf to give it a high gloss.

The second item was a display of foliage leaves from all over the

world which are being flown into Birmingham Metropolitan Area. The arrangements made with them give an exotic effect which is my estimation would surpass many made with flowers.

PARKING AREA FOR YOUR SHOPPING CONVENIENCE

Jacobson's
BIRMINGHAM



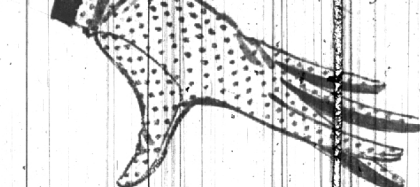
your
Easter
straw
is strictly
on the
level

It's a level-headed spring
like these three veil-misted straws
designed to do wonderful,
beautiful things to you and to your
Easter and new season costumes.

13.95 12.95 12.95

MILLINERY SALON — FLOOR LEVEL

The Spectator Glove by Crescendos



Jacobson's
BIRMINGHAM

Champagne perforated double-woven cotton, cuffed and edged with caramel ... that new spectator look. Completely washable and stainproof. Also all-white.

\$3

Country Tweeds takes a short cut to spring
with Juilliard's textured wool Silver Mist

White on Navy Cropped Toppers

\$35

Two fluid little wrappy cover-coats that make much of colour contrast and the textured fabric ... Silver Mist ... so easy to wear any hour of the day or night, over any costume everywhere you go. Left: the dardigan with the wonderful surprise of a sparkling rhinestone button on each wide, wide cuff. Right: the almost classic shortie, collared and faced with white. Sizes 8 to 18.



Jacobson's
BIRMINGHAM