

Pot Roast Always Gets a Hearty Welcome

BY DOROTHY MADDOX

BEF pot roast is a timely menu suggestion. With good supplies of beef in the markets, most beef cuts, particularly the chuck and rump, are economical meat buys. Other pot roasts may be the boneless sirloin tip or round steak, cut at least 2 inches thick. Look for a good covering of fat and streaks of fat in the lean of the beef for a more juicy roast.

In purchasing a pot roast, allow 1/4 pound of a bone-in roast or 1/2 pound of boned roast for each serving. Because the leftover pot roast is so good and has so many uses, you will probably want to purchase enough for at least two meals.

Good seasoning, slow, moist-heat cooking and colorful vegetable accompaniments are the basis for a fine beef pot roast. Cover the meat with seasoned flour and brown thoroughly in a little fat in a heavy kettle or a roasting pan. When browned on both sides, place the meat on a trivet or rack and add 1/4 cup of water, a thin sliced onion and 2 bay leaves.

Cover and cook either on low surface heat or in a moderate oven (350 degrees F.). After 2 hours cooking, add prepared vegetables, such as quartered onion, separated carrots, strips of green pepper and pared, whole, small potatoes.

Cover and continue cooking 45 to 60 minutes. When ready to serve, remove the meat and vegetables to a warmed platter and thicken the meat broth with flour to make a rich flavorful gravy.

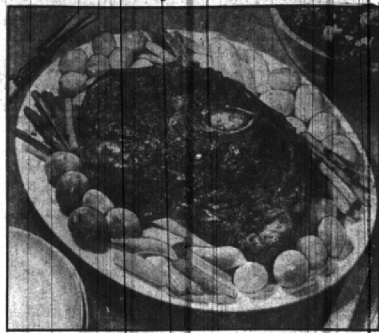
Here is a variation of the conventional pot roast and vegetable combinations:

CREOLE POT ROAST

(This is 4 servings)

Three pounds beef pot roast, 2 tablespoons fat, 1 1/2 cups tomato puree, 1/4 cup olive liquid, 2 cups sliced onions, 3/4 cup sliced stuffed olives.

Melt the fat in a heavy skillet. Brown the meat well on both sides. Add the tomato puree and olive liquid. Top the meat with onions and olives. Cover lightly and cook over low heat for 2 1/2 hours. Serve with hot fluffy rice in true Creole style.



Savory pot roast with vegetables, an ideal cold weather meal.

If gravy is made with the pot roast use only 1 tablespoon flour mixed with 1/4 cup cold water for each cup of broth. A teaspoon of curry powder mixed with 1/4 cup water, a few shakes of pepper sauce, and a dash of Worcestershire sauce will give added evidence of the Southern influence.

Piano Pupils to Play In Thursday Recital

Mrs. Walter F. Ruffer will present a number of her pupils in a piano recital at eight o'clock Thursday evening, June 25, at the Kinross avenue home of Mr. and Mrs. Arch Brown.

Taking part will be Melodie Brown, Karl and Joanne Locke, Carol Johnson, Joanne Deer, Edward Jesse, Barbara Ogilvie, Jimmy and Bob Hohmeyer, Sarah Hogan and Cindy Liephart.

To close the program, Mr. Brown, a member of the Scandinavian Symphony, will play several selections on the violin, accompanied by Mrs. Brown.

Take 1st Scouting Award

Among those who received Curved Bar awards, the highest award in Junior Scouting, at the recent Court of Honor held at the Community House were Nancy McCortney, Patricia Henry, Elizabeth Gillen, Sue Perry and Mary Alice Thurber.

Have You Met . . .

Mr. and Mrs. Raymond E. Kasabian of 761 Ann street, Kasabian was recently discharged from the United States Army where he was stationed at the Presidio in San Francisco, Calif. He is now in the building business with his father, A. L. Kasabian of North Woodward avenue.

QUALITY BUILDERS

WALTER H. DESIMPEL and SON

GENERAL CONTRACTORS

30 years of satisfied customers

Residential and Commercial building.

Specializing in Birmingham and Grosse Pointe areas. Midwest 4-8151 JORDAN 4-6674 TUXEDO 2-3219

COMMUNITY HOUSE CALENDAR

THURSDAY, JUNE 25
6:30 p.m.—Family dinner (by reservation)
7:45 p.m.—Middling class (beginning class)
FRIDAY, JUNE 26
10:30 a.m.—Club Park U.S.
1:30 p.m.—Girl Scout troop meeting
8:00 p.m.—Girl Scout troop meeting
MONDAY, JUNE 29
12:00 noon—Rotary luncheon
1:30 p.m.—Newcomers social meeting
2:30-5:00 p.m.—Girl Scout troop meeting
8:00 p.m.—Social F.I. meeting
TUESDAY, JUNE 30
12:00 noon—Exchange luncheon
2:30-5:00 p.m.—Girl Scout troop meeting
8:00-10:00 p.m.—Girl Scout troop meeting
WEDNESDAY, JULY 1
6:30 p.m.—Keweenaw dinner
12:00 noon—Lions luncheon

Smith-Walton Repeat Vows

At a family wedding Saturday morning, June 20, at All Saints Episcopal Church, Pontiac, Thomas R. Walton of Ferndale and W. Walter Smith of Pontiac spoke their nuptial vows. Thomas R. Walton, Jr. gave mother in marriage at the ceremony performed by the Rev. G. Geo. Widdfield. Attending Mrs. Walton was her daughter, Mrs. Robt. Worthington Ritter. E. Phelps Smith was his best man. After a wedding trip to Bermuda, Mr. and Mrs. Smith will be at home at "Maple Place" on the road, Pontiac, August 1.



A CANDIDATE for "Miss Young Republican of Michigan" is Dolores Susin, daughter of Mr. and Mrs. John Susin of Orchard Ridge road, Bloomfield Hills. The selection will be made at a gathering in Green Glen Park, Utica, at one o'clock Saturday afternoon, June 27. Miss Susin, a 1950 graduate of Baldwin High school, will begin her senior year at Michigan State College in the fall. She is a member of Alpha Gamma Delta, president of her dormitory, and is in the collegiate "Who's Who". She has completed two years study in retailing, merchandising and fashion design, and is now studying personnel work.

HURRY

YOUR Gas WATER HEATER DEALER'S SPECIAL OFFER Ends SAT. JUNE 27

If your water heater is old—if it won't deliver all the hot water you need, switch to a modern automatic GAS Water Heater now and save. See the new automatic GAS Water Heaters of your dealer's. There's a model to meet your needs and you'll be amazed when you learn how inexpensive they are to own and operate.

OLSEN'S MARKET

B'ham Community House

407 W. Brown at Chester
Midwest 4-1916

One block south and one block west of the Birmingham Community House

Fresh Caught Fish
Fancy aged Rib Roast of Beef

We Specialize in Fresh Dressed Poultry

Fresh Fruits and Vegetables
FREE DELIVERY
ALWAYS PLENTY OF PARKING SPACE
28 Years of Service to Birmingham

Buy NOW and Save!

\$10 ALLOWANCE FOR YOUR OLD WATER HEATER

Remember, AUTOMATIC GAS WATER HEATERS COST LESS TO OPERATE... LESS TO INSTALL... LESS TO BUY

GAS SERVES BEST - COSTS LESS!

PG-3246-00
See your GAS WATER HEATER DEALER Today
This Ad. Published in Cooperation with GAS Water Heater Dealers by C. P. Co.

SPECIAL

Mainspring or Stem and Crown For any make of watch \$3.50

24 Hour Service—Guaranteed for One Year

KINCAID'S JEWELERS

35 Years In Watch Repairing
• Guaranteed • Dependable Service

213 E. Maple, Birmingham MI 4-7830

At 30 m.p.h. can you stop your car in 50 feet?

TRY THIS SIMPLE BRAKE TEST TODAY!

On dry pavement, at 30 miles per hour, you should be able to stop your car easily within 3 car lengths (50 feet). Try it on a clear stretch of road. Be sure your brakes are safe!

YOU'LL BE MAKING MORE STOPS THIS SUMMER . . . SO LET OUR EXPERTS ADJUST YOUR FORD BRAKES AT THIS NEW LOW PRICE

GET THIS FAST, EFFICIENT BRAKE SERVICE Today

HAROLD TURNER, Inc.

Turn to Turner — Your Friendly Ford Dealer

444 SO. WOODWARD AVENUE PHONES: MIDWEST 4-7500 or JORDAN 4-6266

Will there be a Cherry Queen in '53?

EVERYONE LIKES to see a pretty girl and we hope there'll always be a Cherry Queen in Michigan. We see no reason why there shouldn't, for thanks to trucks Michigan's cherry industry has grown into a tremendous business—and still continues to grow.

The cherry industry depends on trucks because trucks get the fruit to canneries and to market faster and in better condition. All of Michigan's cherry crop moves from orchard to cannery by truck—and from 50 to 75% of all the other fruit raised in Michigan likewise depends on motor transport to get to market.

We're sure there'll be a Cherry Queen in '53—and every year thereafter—for, with trucks on the job the cherry industry is bound to continue to grow and prosper.

If you've got it, a truck brought it!

Michigan Trucking Association

Hotel Fort Shelby • Detroit

TRUCKS ARE YOUR FRIENDS—Serving You NIGHT AND DAY!