

City Adopts New Rates For Plumbing Permits

Changes in Birmingham's plumbing permit fees have been approved by Birmingham city commissioners. The new schedule is expected to provide approximately 15 per cent more revenue.

fees, regardless of type. New fees will be based on a sliding scale, ranging from 25 cents to \$1, depending on the type of installation.

NATURE NOW

Summer Is High Tide Of Flowering Season

By LYDIA KING FREHSE
Special Writer for The Birmingham Eclectic

June 21 marks the summer solstice, bringing with it as it does, our longest days and shortest nights, this month also gives us our maximum hours of sunlight.

Now is the high tide of the season's flowering. Gardens and meadows reach their peak of perfection before the slip stain of summer's heat falls on leaf and petal, on grass and tree.

However, the beauty of an early summer garden which is so satisfying to us, is only incidental in Nature's plan. It is nothing more than a by-product of her concern for insuring the future of the species. For every flower that opens has but one goal—to set in the brief hour of its blooming the seed which will carry on its kind. It is toward this end that Nature's creative hand as she conducts her endless experiments with the stuff of life.



Mrs. Frehse

No flower has more than four parts: calyx, corolla, stamens and pistil. The calyx serves to protect and support the bud.

It is variously shaped and divided into sepals, which may serve a special purpose by doubling as petals. It is usually green, but if it takes the place of the petals, it may be white or colored as it is in the case of dogwood and some species of lilies.

THE COROLLA, which is the most variable part of the flower, is the inner floral envelope whose divisions are called petals. It opens shades and protects the pistil and stamens and serves to attract insect pollinators.

However, seed-making is impossible without the essential stamens, which manufacture the pollen grains and the pistil which receives them, and whose lower portion swells into the ovary, where they ripen into seeds. Frequently, there are separate pistillate and staminate flowers but they must function

together aided by a pollinating agent. The root, stem and leaf of a plant are fashioned by such environmental factors as water, light and heat, but the shape and color depends upon whether it is pollinated by wind or insect.

SOME 200 million years ago, when Nature was first experimenting with flowering plants, she made the pine cone to serve as rudimentary flower. Large quantities of flowers which are produced by the ends of the branches. This is disseminated by the wind and fertilized the female flower which is borne separately at another point on the branch where it ripens into a cone, concealing the seeds between its scales.

Nature, ever economical of materials and methods, has not used a corolla when none is needed. In like manner, such species as the cork-bearing hardwood trees and the large and important grass family have very inconspicuous

I hold in my hand a stalk made up of hundreds of tiny flowers. Now, with the aid of my microscope, I am looking at one of these magnified 50 diameters. Suddenly it becomes a marvelous mechanism. The essential pistil is fanned out from a reservoir which is held in a wind-blown pollen. The three anthers are held high above the protecting whorls of the suppliant sepals and petals. No color or nectar is needed to carry out the pollinating process.

AS FLOWERS became more highly specialized, Nature turned to more effective insect pollinators, using brightly colored corollas as landing platforms and offering nectar and pollen as bait.

Many flowers, like honey-suckle and trumpet creeper, can only be pollinated by the larger long-tongued bees, butterflies and moths or by the hummingbird. On the other hand, a flower like golden rod, with its easily accessible masses of bloom and overflowing nectaries is visited by almost every insect.

The orchid family takes great pains to adapt itself to the pollinating insect, making irregular corollas with spurs, pouches and odd shaped petals.

I have often watched a bee enter a pink ladies slipper. Guided to its front door by lines on the pouch, it is imprisoned until it finds its way out the back door, first leaving the pollen it has brought with it on the receptive stigma and tak-

MICHIGAN OUTDOORS
with MOST NEFF

NEW BOAT SAFETY LAWS
Michigan's new boat-safety regulations are attracting national attention. Henceforth every one of the many thousands of boats rented to the public must conform to the specifications set up by the Michigan Department of Conservation. Regulations are going to be enforced, and inspections made by local sheriff departments throughout the State. It's a big job, and one that is bound to result in some confusion before successful application on a wide-spread basis.

Specifications Detailed
The capacity of any given boat is determined by a well defined formula which takes into account length and depth of the craft are deciding factors. Once this passenger capacity is determined, a metal tag affixed in plain sight will state how many people may be aboard. A child, regardless of age, is classed as a "person" in this specification.

Each boat will carry a stenciled emblem on the side marking the waterline. If this stencil is submerged the boat is overloaded.

Outlets must be attached to oars, and oars must be fastened to the boat proper by a length of line or chain—a regulation which will prevent the loss of an oar when such a might mean the difference between life and death.

A former Birmingham resident, Mort Neff's "Michigan Outdoors" television show appears every Thursday

ing with it a new lead for the next flower. . . .
MONKSHOOD is another highly specialized flower. Its corolla is nearly round to fit a single pollinating insect. It has turned its upper petal into a hood, inside of which two insect feet are necessary. These end in a long spur which is just the length of the proboscis of the bumblebee.

The scientist laboring over his manuscript, probing into the mysterious heart of things with his microscope, daily adds to the mounting sum of our knowledge of plant structure and function. But he is the first to admit that there is much which yet eludes him.

It is written that on a day in June the great Linnaeus had retreated to his garden at dusk to enjoy the fragrance and beauty of the moon came up and the night flying moths were fluttering about the blossoms of pollinating the white flowers, when a servant appeared to announce a visitor: "Who's up?" the great botanist, looking about at the mysterious beauty of his garden, said, "Tell me that I have at this moment another more important guest—the presence of God is passing by."

PLAY IT SAFE!
Check Site Of Burner For Safety

Have you ever stopped a moment to think when you burn your papers, rubbish, leaves, etc., whether you are endangering surrounding property or perhaps even your own property?

Every year many trees, fences, shrubbery and occasionally a garage or some other small building is burned in the City of Birmingham by unwatched rubbish burners or burners that are too close to buildings. There have been more fires and complaints from rubbish burners in Birmingham this year than ever before.

MAKE A SURVEY of your rubbish or trash burner. Is it too close to your garage or someone else's garage or fence? Is there high grass around it that might catch fire and burn someone's trees or shrubs? Is there a high wind blowing that would tend to let the fire get away from you?

If so, see if there isn't a better location for your burner, one safer for all concerned.

If you have domestic help make sure that when they go outside to burn papers they watch the fire until it is almost out. If you are going to burn grass, trash or brush and you do not own the property on which the burning is to be done.

GLENN WING POWER TOOLS
• Atlas • Delta
• Porter-Cable
• Shopsmith
• DeWalt Saws
1437 SOUTH WOODWARD
Five Blocks North of 14-Mile Rd.
BIRMINGHAM, MI 4-0444
Daily 8 to 6:00—Fri. 8 to 8:00

Do You Have A BED-WETTING PROBLEM?
We have the cure for this!

SHAN'S DRUG STORE
105 W. Maple MI 4-2121

CRAIG APPLIANCES
112 So. Woodward
Phone MI 4-2525

come into the fire department and get a burning permit. It is required by Birmingham Fire Department.

OLD TIRES "POP"
Like Firecrackers in hot weather

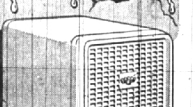
TRADE NOW FOR Firestone TIRES AT

BOB ADAMS SHELL SERVICE
Hunter at Maple MI 4-9750

Stop moisture damage ELECTRICALLY



FRIGIDAIRE Electric Dehumidifier



Only \$139.75

This revolutionary new Dehumidifier takes moisture from the air, condenses and collects it all electrically. Ideal for game rooms, libraries, laundries, etc. Famous Meter-Mixer mechanism has special 5-Year Protection Plan.

Ask About Free Home Trial!

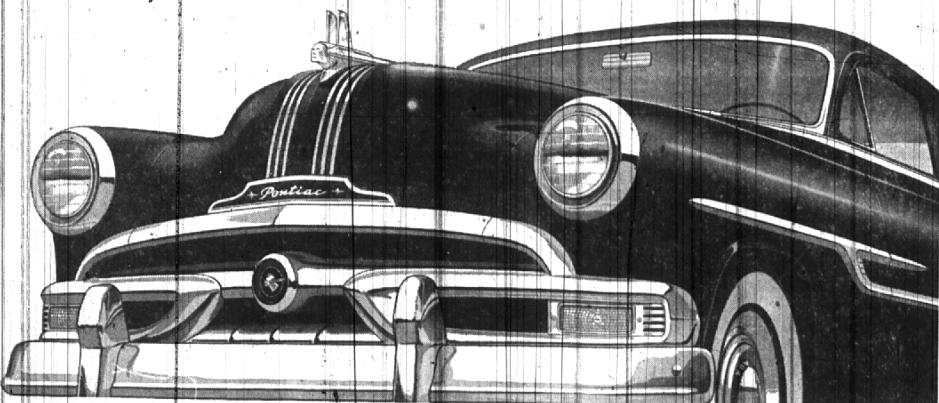
8 HOUR PHOTO FINISHING
Films Left 9:30 A.M.
Ready 5:30 P.M.
Eastman Kodak Dealer
QUINN'S
CAMERAS HOBBY SUPPLY
130 W. Maple at Pierce MI 4-9010
Open Friday Evenings Till 9

Ritter's BEVERAGES
297 EAST MAPLE
STORE HOURS
Mon. thru Thurs., 9 to 7
Fri. and Sat., 9 to 9
Phone MI 4-3444
DELIVERY DAILY, EXCEPT SUNDAY

Kool — Komfortable Summer Suits
— by —
"STYLE MART"
NYLON-RAYON Cord Suits with two-pair pants in grey-blue and white. \$17.50
RAYON ORLON Nub Weave in Light Brown, Blue, Medium and Light Grey. \$62.50
IMPORTED PURE IRISH LINEN in Natural linen color and Two-Pair pants. \$59.50
PECK'S MEN'S WEAR
108 S. Woodward MI 4-7724

POWER! PERFORMANCE! AND LOW PRICE!

Drive it and Learn Why Dollar for Dollar You Can't Beat a Pontiac



Pontiac
GENERAL MOTORS LOWEST PRICED EIGHT
275 North Woodward Ave.

When you first sit behind the wheel of a new Pontiac forget its very low cost and concentrate instead on its performance. Guide it through city traffic and see how its big, high-compression engine gives you amazing get-up-and-go. Then take it out on the open road and feel how it provides power to spare.

Next, see how relaxed you are in Pontiac's roomy, luxurious interior,

how easily Pontiac handles, how sure-footed it is on any type of road. Add to all this Pontiac's distinctive Dual-Streak beauty and you know you're commanding a car that represents true fine car quality through and through.

We suggest you come in and put Pontiac through its paces. We're sure you'll agree that here's mighty powerful proof that dollar for dollar you can't beat a Pontiac.

WILSON PONTIAC-CADILLAC, Inc.
Phone Midwest 4-1930 and Jordan 4-6655