

**AM I HAPPY!!!**

**Neighborhood Hardware**

HOURS: 9 a.m. to 8 p.m. — 'til 9 Fri. — Sun. 9 to 4

1228 SO. WOODWARD WE DELIVER MI 6-2588

**HAS THE NEW**

**FAB-SPRAY**

Spray Cans Quart Sizes

**Southfield Police Dept. In Formation**

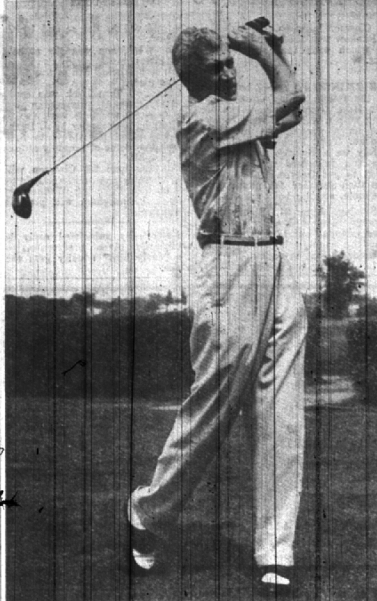
Southfield township board members Tuesday night indicated the first steps in the creation of a police department when they authorized the taking of bids on a police car and approved the purchase of mobile radio equipment.

Township residents voted for a police department at the annual meeting in April. Residents felt that the \$5,000 spent annually for police protection by the Oakland County Sheriff's department should be spent for a local law enforcing agency.

Supervisor William Boeser recommended the purchase of the radio equipment now to take advantage of government aid in the cost. The Office of Civilian Defense has agreed to pay half of the purchase price of the radio system in return for its use in time of emergency.

AN ESTIMATED bid on a 10-watt transmitter and two receivers was submitted at \$2,000. If a contract is approved with the state agency of the O.C.D. the township will pay half of this figure.

Acting on a suggestion of board member Bernard A. Chapman that "you wouldn't buy a spare tire before you bought an automobile," the board also authorized Boeser to obtain specifications on the purchase of a police car and advertising for bids to be opened at the July 14 meeting of the board.



RAY MAGUIRE Local pro to compete on own course. (Eccentric Staff Photo)

**Tourney**

(Continued from Page 1)

Meanwhile the Birmingham police department, Oakland County Sheriff's department and State Police are busy making traffic studies of the area to assure a free flow of traffic to parking lots.

Parking will be prohibited on the north side of Fourteen Mile road from Bates to Norfolk, on both sides of Southfield from Fourteen Mile to Lincoln, on both sides of Lincoln between Southfield and Cranbrook, and on both sides of Cranbrook between Bryn-Aur to the south city limits.

PARKING will also be prohibited within the area bounded by Southfield, Fourteen Mile, Birmingham Country Club, Lincoln and via. Fla.

**Police Chief Announces Patrolman's Resignation**

Police Chief Ralph W. Moxley today announced the resignation of Patrolman Ralph Kelly from the Birmingham police department.

Kelly, a veteran of World War II, joined the department in February, 1950. He was the first man assigned to operate the radar speed control unit after its purchase by the city in 1951.

According to Moxley, Kelly will leave his police post on June 26, and shortly after that will leave to enter private business in Pensacola, Fla.

**Land Grab**

(Continued from Page 1)

mitted minutes later than the Southfield Citizens' lists, were accepted over the earlier petitions because they were accompanied by the \$500 filing fee. The annexation vote has been set for September 15.

Petitions to incorporate the township as a whole, in the hands of the county supervisors before the Lathrup vote, have since been ruled void because of the changes in the township's borders effected by Lathrup's incorporation.

Promoters of a township vote are now undecided as to whether to submit a second set of petitions or wait and see if pending incorporation and annexation votes further change the township's boundaries.

Franklin will vote on becoming an incorporated village on October 3.

WHILE THESE petitions are being cleared by the Board of Supervisors, the City of Berkley is also looking at still another portion of Southfield. The city council and planning commission already have stated that they favor annexing a parcel from Greenfield west to the Lathrup limits.

Southfield represents the last unincorporated area bordering the northwest limits of the City of Detroit within a 40-minute drive from the downtown section.

Drainage and water problems have plagued Southfield's development while other South Oakland County cities were booming under the post-war suburban expansion.

The location of shopping centers and industry have raised land values in the township to the point that the land can be developed economically.

The boom is on in Southfield now and the cycle from acreage to village also is underway. It seems now but a matter of time before the 26-square mile township will become a highly developed residential, commercial and industrial maze of small cities as has been the history of Royal Oak township over the past 25 years.

**LaPine Fourth In Road-E-O**

Jim LaPine, Birmingham's entrant in the state Teen-Age Road-E-O finals Saturday, June 21, at Michigan State College, placed fourth in the boys' competition and was given an honorable mention.

The 17-year-old Birmingham high school student won the right to represent the city in Lansing when he won the local contest at the high school May 23.

Warren McKenzie of Fenton won the state finals with Earl Feldkamp of Saline, second, and Theodore Jackson of Pontiac, third. Janet Green, of Midland, took top honors in the girls' division.

The annual road-e-o contests are sponsored locally and nationally by Junior Chamber of Commerce and state trucking associations.

**No Contract Error In Disposal Pact**

Contrary to statements made in a recent story published by a Detroit metropolitan daily paper, the sewage disposal contract between the City of Detroit and Birmingham has not encountered legal difficulties and will be instituted as quickly as possible, City Manager Donald C. Egbert told city commissioners Monday night.

The newspaper story reported that a Birmingham city hall typist had deleted a paragraph in the final draft of the contract, causing Detroit officials to ask that the contract again be signed.

Household Goods of every description are offered for sale in the Classified Columns of The Birmingham Eccentric.

**Little Bigger League State Tournney Here**

Birmingham has been selected as the host city for the Little Bigger League (13 to 15-year-olds) state tournament July 27 to 29. Don Chaffee, state director, announced today.

All-star teams from Birmingham, Berkley, Farmington, Huron, Valley and Escanaba will compete here for the right to enter the Michigan - Ohio - Indiana - Illinois regional tournament, which leads to the World Series at Trenton, N. J., in late August.

As a warmup for those games, Birmingham's Little Bigger League will send an all-star team to Farmington on Sunday for an exhibition contest at 2 p.m. In regular league play Monday

evening, the last-place Rockets won a slugging match against the League-leading Chiefs, 17 to 8. Arnold Islette knocked one over the fence to help Bob Deakin get credit for the victory. Mike Frye and Bob Holcomb pitched for the Chiefs.

Tonight the Chiefs meet the Bel-Airs at 6 o'clock at the high school field.

**BUILD YOUR OWN PATIO**

with Easy to install PATIO SLABS

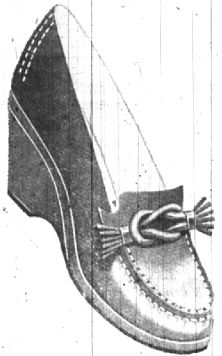
Available in 4 different Colors and Sizes 2" Thick Wire Reinforced.

**GRAND CANYON CAST STONE CO.**

Wo. 12-1572

the next best thing to walking on air . . .

**OUR LOG ROLLER**



12<sup>95</sup>

this is the country pacer noted for its staunch good looks . . . and even more important, its supple flexibility that cradles the foot when you're at ease or on the move. Light, unlined, and with a hand-stitched vamp; in burnished brown or red calf or natural. And so famous are its virtues that we have it in a lavish range of sizes: 4 1/2 to 10, AAAA to B.

**Herbert Burr**

Shoe Salon

255 No. Woodward, Birmingham

**Kay bamm**

99 W. MAIN BIRMINGHAM

**Sun-steps**

DISTINCTIVE CASUAL SHOES

Famous Hood Sun-steps . . . the highest compliment to your entire summer wardrobe. So smart and comfortable. Colorful, varied fabrics in a host of captivating styles . . . at a price that is amazing. Let us fit you from our complete assortment today.

**SPECIAL PURCHASE!**

Reg. \$19.98 — Beaumart

**Sweater Dress**

Complete with Garland Lambswool Sweater

**\$14.99**

CORRECT FITTINGS BY J. D. McSWEENEY

**Campbell's Village Store**

205 Pierce St.

**Talk of Town and Country**



CALENTE

**Sun-steps**

DISTINCTIVE CASUAL SHOES

Famous Hood Sun-steps . . . the highest compliment to your entire summer wardrobe. So smart and comfortable. Colorful, varied fabrics in a host of captivating styles . . . at a price that is amazing. Let us fit you from our complete assortment today.

CORRECT FITTINGS BY J. D. McSWEENEY

**Campbell's Village Store**

205 Pierce St.

**SUMMER SALE of Little Furs**

G R A H A M FURS



In time for summer-into-fall costuming . . . our wonderful sale of the little furs that count! Each fur a luxurious example of tailoring artistry.

Sumptuous Baum Marten skins, fluttering in so many ways. Natural ranch Mink, elegantly handled in the sleek new clutch style.

1512 SOUTH WOODWARD

**BLOOMFIELD**

Birmingham, Mo. • Midwest 4-8008 • A United Detroit Theatre

OPEN MONDAY 6:45 P.M. SAT.-SUN. 1:45 P.M. THRU FRI. HOLIDAYS

Now Showing Thru Saturday, June 27th

RICHARD WIDMARK — WALTER PALANCE

**"HALLS OF MONTEZUMA"**

— Plus —

**"FROGMEN"**

in Technicolor

STARRING

RICHARD WIDMARK — DANA ANDREWS

COMING SOON

HUMPHREY BOGART — JUNE ALLYSON

**"BATTLE CIRCUS"**

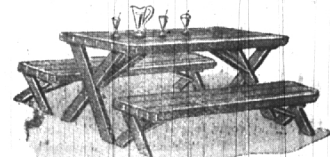
**OUTDOOR FURNITURE**

Live out-of-doors while you can! And you'll find everything you need under the sun for comfort and loafing in style at Lewis'. Our selection is terrific!

**Redwood Picnic Table**

Solid California Redwood in all its natural beauty. Sanded smooth as can be, weather resistant, ruggedly constructed. Rounded corners on table and 2 benches.

28x70 . . . \$38.95



**LEWIS Fine Furniture**

235 Pierce St. Phone MI 4-4920  
Pontiac Store 62-70 South Saginaw Street, Pontiac

**Brown's SPECIAL CARPET EVENT!**

4.95 sq. yd.		3.95 sq. yd.	
<p><b>'STRAITED BROADLOOM</b> Designed to harmonize with modern or provincial. Completely woven through so you can reverse it. Green, grey, beige, brown, champagne.</p>		<p><b>LUSH DEEP PILE COTTON</b> Made of the highest quality yarn. PRE-SHRUNK, washable, non-slip back. Cinnamon brown, dark green, sesame tan, old rose.</p>	
8.95 sq. yd.		9.95 sq. yd.	
<p><b>ALL WOOL-EMBOSSED WILTON</b> All wool still means the best in carpet. Green, beige, grey.</p>		<p><b>TWO LEVEL-ALL WOOL WILTON</b> Tightly woven heavy Wilton—resists crushing and shading. Grey, green, beige, cinnamon.</p>	

between 11 and 12 Mile roads LI 2-9595 JO 4-6873

We Give **J.N.** Green Stamps Open Every Night Saturday 7:30 2869 Woodward