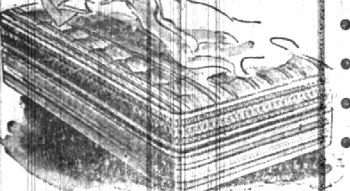


## New Comfort From Your OLD MATTRESS



All Makes Rebuilt—Recovered ONE DAY SERVICE

Dial—O—Ask For ENTERPRISE 6319

Your Mattress Can Be Made Longer, Wider, Soft or Firm

FREE ESTIMATES

ALL WORK GUARANTEED

OAKLAND COUNTY'S LARGEST MATTRESS & UPHOLSTERING FACTORY

Consult Our Experts... On New Custom Built Mattress

Royal Mattress & Upholstering Factory

22320 Woodward Ave. Ferndale

Call Midwest 4-1100 to place an Eccentric Classified Ad.

### AAUW Check Is 'Seed' For Tennis Court Fund

A \$50 check sent to the Birmingham recreation board by members of the Birmingham AAUW has been earmarked for what board members hope will be the start of a third tennis court at Eton Park.

"We want another court so badly and see no way to proceed to build for one, that tagged this check as 'seed' for the third court seems like a good idea," Mrs. William Jackson, chairman commented.

"Maybe other organizations and individuals will follow the exam-

ple," City Manager Donald Robert remarked, "and we'll be able to buy that third court a square foot at a time. We'd be almost willing to name the park after anyone who would give us money enough to build two more courts right away."

### Westminster Picnic

The annual picnic of the First Presbyterian church Westminster guild will be held at 4:30 P.M. June 11. Mrs. C. L. Richards, 1628 Pierce, will open her home for the pot luck dinner.

Can YOU pay \$5,000.00 to fight POLIO? AND 8 OTHER DREADED DISEASES...

Get Protection on All... in One Policy!

\$5,000 INCREASING TO \$10,000 TO (\$5,000-\$10,000 on each member of your family) to pay expenses of these 9 dreaded diseases

- POLIO**
- DIPHTHERIA
  - ENCEPHALITIS (Sleeping Sickness)
  - LEUKEMIA (A Disease of the Blood)
  - SCARLET FEVER
  - SMALLPOX
  - TETANUS (Lockjaw)
  - SPINAL MENINGITIS
  - RABIES (Includes Preventive Inoculations)

One Policy Insures All your Family\* \*Husband, wife and all unemerged children from 3 months to age 18.

only \$10 a year... or \$4 insures one person!

Pays Benefits for Doctor Bills, Hospital Bills, Special Nurses, X-ray, Physiotherapy Treatment, Blood Transfusions, Drugs and Medicines, Iron Lungs, Buses and Cribches, Ambulance, Transportation.

PHONE MI 4-7300

**BINGHAM & BINGHAM**

310 Wabek Bldg., Birmingham

## DOWN TO EARTH Plan Garden to Blend With Design of Home

By ALICE WESSELS BURLINGAME Special Writer for The Birmingham Eccentric

Linden is a narrow street which discourages traffic and many of the homes on the avenue have a peaceful countenance due to their architecture, surrounded by landscaping done in good taste.

We have an example of this fine tie-up with architecture and garden design with the home of the Godfrey Strelingers at 294 Linden.

The home is a story and a half of English cottage design. The brick is dark and the trim around the windows is dark brown. There is a white dogwood near the entrance and two purple lilacs in front of the house which is incorporated in the architecture.

Near the entrance of the home the low easter with its dainty texture is an important part of the foundation planting. Eucalyptus and taxus supplement the planning as the structure is close to the ground in a semi-shady setting.

An 18-inch stone wall was built half way up the front walk to take care of the natural slope and give a fine vertical line. On the front lawn framing the home, a white flowering crab and a double white lilac have been used.

THE RHAR Garden was designed with some definite objects in mind. It must be easy to maintain, be appropriate for the architecture of the home, and a feeling of peace is definitely achieved. The young people here have established their own business in this family and this is the time for the Strelingers to have a designed garden for their 1953 pattern of living.

The visitor sees a circular garden which is the design for the rear garden. It is dominated by a maple, perhaps 65 feet high, whose plants which like half shade have been planted for a constant interest during the summer months. A band of steel extends above the turf to prevent the circular design and add to the garden's extra maintenance.

The flowers in this garden are forget-me-nots, corallibells, peonies and primroses. Yews are placed at intervals with winter interest. Dwarf hyacinths, daffodils and tulips, hostas, oak leaf hydrangeas, myrtle and Oregon holly, does itself bring lemon lilies perform fairly well, shasta daisies give a nice white background and the iris gives fair performance.

WHEN YOU design a garden there should be no accident. This is achieved when you draw a straight line from the most important view across from either side of porch. This is your focal point. Up the side of the home the landscape architect combined both

**Ritter's BEVERAGES** 297 EAST MAPLE STORE HOURS Mon. thru Thurs., 9 to 7 Fri. and Sat., 9 to 9 Phone MI 4-3444 DELIVERY DAILY EXCEPT SUNDAY

by and anonymous to assure a winter interest.

They have a problem margin of soil on the north side of the house and it is a carpet of shiny myrtle. Mrs. Strelinger often clips it so that it has the appearance of a compact carpet. She reports it will bloom a second time each year with this treatment.

THIS YEAR I have seen an shrub which is new and one you will want to try for a boundary planting. It is the Canadian lilac it flowers in the last week of May and into June. The leaves are medium green and are lanceolate in shape. The flowering period is colorful as the buds are a deep purple-red, but there are many color tones in the mass of flowers.

The Kenneth Hardy's at 412 South Hurst are proud owners of this new specimen. It seems to be sturdy and disease free. Do not apply summer mulch (peat moss, sawdust with nitrogen fertilizer, etc.) to your planting beds until the first of January. Considerable research at Ohio State university has proven it is important that the roots have the advantage of the direct rays of the sun for the maximum growth. After all healthy plants are apt to be more disease resistant. You fertilize before you apply your summer mulch

Some garden plants are sold by distant firms. When the plant material arrives the quality of the plants are dubious and the plants are very small. On the spot selection of plants makes you assured of good plants and at once the project begins to be yours.

**Lawrence E. Smith Landscape Design and Construction** 135 N. WOODWARD in the Wilson Building Phone MI 4-2036

**OLSEN'S MARKET** CHESTER BROWN 407 W. Brown at Chester Midwest 4-1916

One block south and one block west of the Birmingham Community House

Fresh Caught Fish Fancy aged Rib Roast of Beef

We Specialize in Fresh Dressed Poultry

Fresh Fruits and Vegetables FREE DELIVERY ALWAYS PLENTY OF PARKING SPACE 28 Years of Service to Birmingham

**WABEEK STATE BANK** FRIENDLY BANK

NO WORRIES ABOUT LOST RECEIPTS WHEN YOU PAY BY CHECK

It's common business to pay your bills by check. There's never any question as to whom, when, and how much you've paid—because you have a permanent record in your check book and on the cancelled checks returned to you. You'll save time, worry, and money, too, by opening a checking account at this friendly bank. Come in today and let us show you how easy and inexpensive it is to pay by check.

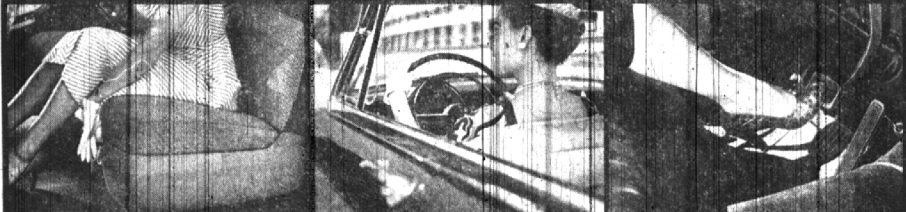
**WABEEK STATE BANK of DETROIT** BIRMINGHAM OFFICE—WABEEK BUILDING

Your RUGS need cleaning too!

We teach our children that "Cleanliness is next to Godliness" ... and we prove it by keeping our floor coverings bright, beautiful and sanitary. It takes a thorough, scientific STAR-cleaning to root out that deeply-embedded dirt that dulls your rugs and shortens their life. STAR-cleaned rugs stay CLEAN LONGER, too. Send your rugs to Star today. Star's prices are economically low.

**STAR CARPET CLEANING CO.** Phone Enterprise 6172—no toll charge Rug and Carpet Cleaning Exclusively for 60 Years!

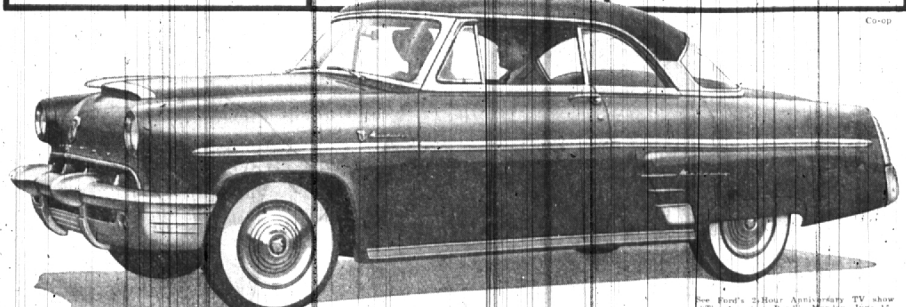
# NOW THE ONLY CAR IN ITS FIELD WITH THIS POWER COMBINATION



**4-way Power Seat—** Mercury's only car in its field with this new power feature—one of the greatest aids to comfort ever devised. At the touch of a finger the seat moves up, down, back or forth... gives you the position from which you can see the best, drive the easiest. And it helps relieve muscular tension on trips. Raises you out of the glare of the late afternoon sun.

**Power Steering—** Whenever more than finger-tip pressure is needed on the wheel, hydraulic "minds" take over, make steering—especially when parking—3 times easier. You never lose the vital feel of the road. Paired with Mercury's proven V-8 engine (featured during an exclusively V-8 history) you get quick-shifter responsiveness—performance at its thrifty, lively best.

**Power Brakes—** They require little more pressure than the accelerator. The weight of your foot holds your car on a hill. Stopping is up to 50 per cent easier—faster, too, because the lowest, closest pedal permits you to pivot from gas pedal to brake, cuts reaction time. Road test these new power features today. You find them all only on Mercury in the medium-price field.



MOVE AHEAD WITH **MERCURY** GET MORE FOR YOUR MONEY

**TOM MCDONNELL, INC.**

850 SO. WOODWARD AUTHORIZED LINCOLN MERCURY DEALER PHONE MI 4-1900 or JO 4-6179

THE BIRMINGHAM ECCENTRIC June 11, 1953

City Manager Donald Robert remarked, "and we'll be able to buy that third court a square foot at a time. We'd be almost willing to name the park after anyone who would give us money enough to build two more courts right away."

The annual picnic of the First Presbyterian church Westminster guild will be held at 4:30 P.M. June 11. Mrs. C. L. Richards, 1628 Pierce, will open her home for the pot luck dinner.

The home is a story and a half of English cottage design. The brick is dark and the trim around the windows is dark brown. There is a white dogwood near the entrance and two purple lilacs in front of the house which is incorporated in the architecture.

Near the entrance of the home the low easter with its dainty texture is an important part of the foundation planting. Eucalyptus and taxus supplement the planning as the structure is close to the ground in a semi-shady setting.

An 18-inch stone wall was built half way up the front walk to take care of the natural slope and give a fine vertical line. On the front lawn framing the home, a white flowering crab and a double white lilac have been used.

THE RHAR Garden was designed with some definite objects in mind. It must be easy to maintain, be appropriate for the architecture of the home, and a feeling of peace is definitely achieved. The young people here have established their own business in this family and this is the time for the Strelingers to have a designed garden for their 1953 pattern of living.

The visitor sees a circular garden which is the design for the rear garden. It is dominated by a maple, perhaps 65 feet high, whose plants which like half shade have been planted for a constant interest during the summer months. A band of steel extends above the turf to prevent the circular design and add to the garden's extra maintenance.

The flowers in this garden are forget-me-nots, corallibells, peonies and primroses. Yews are placed at intervals with winter interest. Dwarf hyacinths, daffodils and tulips, hostas, oak leaf hydrangeas, myrtle and Oregon holly, does itself bring lemon lilies perform fairly well, shasta daisies give a nice white background and the iris gives fair performance.

WHEN YOU design a garden there should be no accident. This is achieved when you draw a straight line from the most important view across from either side of porch. This is your focal point. Up the side of the home the landscape architect combined both

**Ritter's BEVERAGES** 297 EAST MAPLE STORE HOURS Mon. thru Thurs., 9 to 7 Fri. and Sat., 9 to 9 Phone MI 4-3444 DELIVERY DAILY EXCEPT SUNDAY

**WABEEK STATE BANK** FRIENDLY BANK

It's common business to pay your bills by check. There's never any question as to whom, when, and how much you've paid—because you have a permanent record in your check book and on the cancelled checks returned to you. You'll save time, worry, and money, too, by opening a checking account at this friendly bank. Come in today and let us show you how easy and inexpensive it is to pay by check.

**WABEEK STATE BANK of DETROIT** BIRMINGHAM OFFICE—WABEEK BUILDING

Your RUGS need cleaning too!

We teach our children that "Cleanliness is next to Godliness" ... and we prove it by keeping our floor coverings bright, beautiful and sanitary. It takes a thorough, scientific STAR-cleaning to root out that deeply-embedded dirt that dulls your rugs and shortens their life. STAR-cleaned rugs stay CLEAN LONGER, too. Send your rugs to Star today. Star's prices are economically low.

**STAR CARPET CLEANING CO.** Phone Enterprise 6172—no toll charge Rug and Carpet Cleaning Exclusively for 60 Years!