

Berries, Cottage Cheese, and Cold Cuts

BY DOROTHY MADDOX

IT'S spring in the kitchen! An attractive platter of cold cuts not only perks up appetites but makes kitchen labor say "aid pleasant these first balmy days."

A good buying guide is to select at least one meat from each of the three "classes" of table-ready meats. Meat leaves are somewhat mild in flavor, often have other ingredients added, such as pickle and pimiento loaf.

Sausages include favorites, such as Bologna and Braunschweiler. Dry sausage such as salami are zesty and highly seasoned and the sure choice of most men. For utmost flavor and freshness, buy these meats from refrigerated cases.

If the meats are pre-packaged, store them in the refrigerator in their original cello-wrapping. Otherwise, wrap them loosely in waxed paper or foil for refrigerator storage and plan to use them at least within a week of purchase for best flavor and goodness.

Although these meats are used more frequently as cold cuts, they are delicious in many cooked dishes, too. Try the following two recipes in your spring luncheon menu!

THURINGER STRIPS AND NOODLES

(Yield: 6 servings)

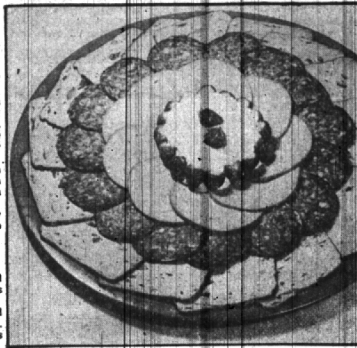
One-half pound Thuringer, 1 cup diced onion, 1/4 cup minced green pepper, 1/4 cup shortening, 1/2 pound noodles, 2 teaspoons salt, 4 cups water.

Cut Thuringer into thin strips. Brown Thuringer, onion and green pepper in hot fat. Add noodles. Fry to a golden brown. Add salt and water. Cover. Simmer 25 minutes or until noodles are tender.

HAWAIIAN BAKED BEANS

(Yield: 8 servings)

One pound cooked salami, two No. 2 cans baked beans (4 cups), 1 cup drained, canned pineapple cubes, 1 grated clove garlic, 1/2 cup honey. Cut salami into 1/2-inch cubes. Combine salami, baked



This assorted cold cut tray, garnished with strawberries and cottage cheese, is a spring treat.

Steak Rollups Mushroom Sauce

1 1/2 pounds round steak, cut 1/2 inch thick
3 tbsp. butter or margarine
1/4 cup finely chopped onion
2 cups day-old bread crumbs
1/2 cup chopped celery
1/2 teaspoon salt
1/2 teaspoon sage
Dash pepper and poultry seasoning
1 tbsp. chopped parsley
1 1/2 cups water
1 can mushroom soup
Have meat-man remove bone and pound steak well on both sides to flatten or pound at home with meat pounder or heavy mallet. Lightly cook onion in melted fat. Add bread, celery, seasonings, parsley and water.

Cut meat into four pieces; on each place one-fourth of the dressing. Roll up and fasten with small skewers or toothpicks. Roll in flour and brown in hot fat. Pour mushroom soup diluted with one cup water over meat; sprinkle with salt and pepper. Cover and simmer over low heat 1 1/2 hours, or until tender. 4 servings.

SWEET POTATOES AND SAUSAGES

If sweet potatoes are treated with care before they're cooked and with imagination when they're cooked, they can be the basis of a fine meal. Handle sweet potatoes carefully, for they break easily. Store them in a cool, dry place.

Then, when you're ready to cook them, use a good recipe like "Sweet Potato Mounds with Sausages" and serve them with pride and assurance that they will be well liked. (The light yellow, dry and mealy type of sweet potato is better adapted to this recipe than the moist, deeper yellow potatoes sometimes called "waxy.")

SWEET POTATO CUSTARD IN ORANGE SHELLS

1 cup mashed sweet potatoes
2 egg, slightly beaten
2 tbsp. melted butter, margarine
1 tablespoon brown sugar
2 tablespoons orange juice
4-6 prepared orange shells
Combine all ingredients. Next arrange custard cups in a pan of hot water and place a prepared orange shell in each cup. Fill shells with custard mixture. Bake in moderately slow oven, 325° F., 40-50 minutes or until mixture is firm. Makes 4 or 6 filled orange shells.

*Remove all loose white membrane before filling shells.

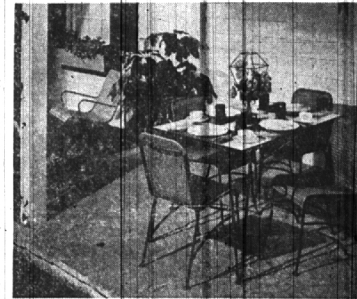
Beef can be stored six months to a year at zero temperatures; however, ground meat should not be kept in a home freezer or commercial locker longer than 45 days.

Coat each slat of venetian blinds with a film of wax to prevent dust collection, but be sure to let wax set for half an hour before moving the slats.

If you have the common figure problem of narrow shoulders and out-sized hips, de-emphasize the skirt and give special attention to the yoke or blouse of your clothes.

Depth of batter in cake pans seems to affect cake texture. Layer cake pans should not be more than half full to achieve a velvety, smooth cake consistency.

Furniture Fashions



The recipe for comfortable "al fresco" dining during the summer months should include a grouping such as the one shown. Light and cheerful, the table's plastic top and tubular metal frame will take a lot of abuse. The woven fibre of the seats and backs of the chairs are not harmed by driving rain or blistering sun.

Tables and chairs have self-leveling glides on the legs to compensate for the type of flooring found in terraces and patios. Bright colors and smart designing give the right touch to modern outdoor living at moderate prices. You can furnish your outdoor living area as tastefully as the indoors.

This group includes occasional tables and lounge chairs, in good taste and extremely flexible, this furniture was designed to be used outdoors in the summer, and if you wish, in the recreation room during the winter months.



CAROLYN LEE PAYNE'S engagement to James A. Runkel has been announced by the bride-elect's parents, Mr. and Mrs. Russell C. Oliver of Catalpa drive. Her fiance is the son of Rev. and Mrs. Arnold F. Runkel of Madison avenue. A September wedding is planned.

COMMUNITY HOUSE CALENDAR

- THURSDAY, JUNE 11
 - 6:00-7:30 p.m.—Family Dinner (by reservation)
 - 7:00 p.m.—Musical class (beginners)
 - 7:30 p.m.—Dance in High School (beginners)
 - 8:00 p.m.—Lecture—The World of the Future
 - 8:30 p.m.—Little League Baseball meet.
- FRIDAY, JUNE 12
 - 10:30 a.m.—1:30 p.m.—Woman's Workshop
 - 9:00 a.m.—Oakland County Hospital Board meeting
 - 10:00 a.m.—1:00 p.m.—Society of Awards (beginners)
 - MONDAY, JUNE 13
 - 8:15 a.m.—League of Women Voters
 - 12:30 p.m.—Rotary Club luncheon
 - 1:30-5:00 p.m.—Branche troop 313
 - 1:30-5:00 p.m.—Girl Scout troop
 - 1:00-3:30 p.m.—Modeling class (Advanced)—beginners
 - TUESDAY, JUNE 14
 - 1:30 p.m.—Exchange Club luncheon
 - 1:30-5:00 p.m.—Troop 307
 - 1:30-5:00 p.m.—Troop 319
 - 1:30-5:00 p.m.—Troop 313
 - 1:30 p.m.—Keweenaw Club dinner
 - 1:30 p.m.—Yerch Club dinner
 - 2:30 p.m.—Vocative Club
 - 3:00 p.m.—Pythians
 - 3:00 p.m.—Oakland County Protective Council
 - WEDNESDAY, JUNE 17
 - 1:30-5:00 p.m.—Troop 306
 - 1:30-5:00 p.m.—Troop 312
 - 1:30-5:00 p.m.—Troop 303
 - 7:00-9:00 p.m.—Modeling class (Advanced)—Junior and Senior classes
 - 8:00 p.m.—Diploma Bringer
 - 8:00 p.m.—Beverly Hills Association meeting.
 - THURSDAY, JUNE 18
 - 12:30 p.m.—Newspaper class
 - 1:00 p.m.—League of Women Voters
 - 1:30 p.m.—Troop meeting

Have You Met... Former Detroiters, Mr. and Mrs. Walter French and their daughter, Nancy? They moved to 1075 North Woodward avenue in May. French is an engineer with the Detroit Edison Company.

CATHERINE SAUNDERS, daughter of Mr. and Mrs. Stanley E. Saunders of South Cleary road, was graduated June 4 from Stoneleigh-Prospect Hills school, Greenfield, Mass. A member of the five club, dramatic club and varsity soccer team, Catherine took part in the commencement production of "The Gondoliers" as an opera production by the combined girls clubs of Stoneleigh and Deerfield Academy.

DON'T NEED IT? SELL IT THRU THE WANT ADS

Thousands of Local People Read The Eccentric's Classified Ad Pages Every Week

If you want to buy, sell, swap or trade, read and use our Classified Columns—

Can't Use It? SELL IT THRU THE WANT ADS

Come See, Come Save at A&P!

A&P SPECIAL SALE of A&P COFFEE!

We Haven't Had Lower Prices on A&P Coffee in Two Years!

Everyone is waiting for coffee prices to come down. A&P has done something about it! For a limited time only, we can offer America's favorite coffee at savings up to 16¢ a pound compared with like-quality coffees. You save even more on the extra-thirty 3-pound bags! Enjoy the same superb quality — the freshly-roasted goodness that makes A&P Coffee America's Favorite! Choose from 3 superb blends — and best of all, enjoy these special, special prices! Change to A&P Coffee now!

EIGHT O'CLOCK COFFEE NOW! Mild & Mellow 1-LB. BAG 77¢
 RED CIRCLE COFFEE NOW! Rich & Full-Bodied 1-LB. BAG 78¢
 BOKAR COFFEE NOW! Vigorous & Winy 1-LB. BAG 79¢

3 LB. BAG 2.25 3 LB. BAG 2.28 3 LB. BAG 2.31

BUY THE THRIFTY 3-LB. BAG Save EVEN MORE!

A&P'S "SUPER-RIGHT" CORN-FED, BLADE CUT Chuck Roast



- "SUPER-RIGHT" LEG, RUMP OR SIRLOIN
- Veal Roast 55¢
 - Fresh Fryers COMPLETELY CLEANED 49¢
 - Stewing Beef "SUPER-RIGHT" QUALITY BONELESS, PRE-DICED 59¢
 - Ground Beef "SUPER-RIGHT"—PREPARED FRESH MANY TIMES DAILY 37¢
 - Veal Shoulder Roast "SUPER-RIGHT" QUALITY—BONE IN 39¢
 - Smoked Hams "SUPER-RIGHT" SHANK PORTION 59¢
 - Smoked Hams "SUPER-RIGHT" BUTT PORTION 69¢
 - Skinless Franks 100% MEAT ALL BRANDS 49¢

- CALIFORNIA LONG WHITE U. S. NO. 1
- Potatoes 10 LB. CONSUMER BAG 45¢
 - Watermelon 28 TO 30 POUND FLORIDA CANNONBALL EACH 1.39
 - Bing Cherries LB. 49¢
 - Head Lettuce LARGE 4 1/2 SIZE CRISP, FRESH 2 FOR 29¢
 - Cultivated Blueberries FOR PIES OR DESSERTS FT. BOX 45¢
 - Bananas TOP QUALITY GOLDEN RIPE LB. 16¢
 - Yellow Onions NEW CROP 4 LBS. 25¢

- YOUR CHOICE—PARLEY ALLSWET, BLUE BONNET, NUGOLA, KEYKO or GOOD LUCK.
- Margarine 1 LB. 27¢
 - A&P Grapefruit Sections 16-OZ. CANS 29¢
 - Homestyle Peaches AD. 1/2 HALVES OR SLICED FRESTONE 29-OZ. CAN 33¢
 - Crushed Pineapple DELL MONTE OR DOLE 20-OZ. CAN 27¢
 - Sparkle Puddings ALL VARIETIES 3 PKGS. 17¢
 - Salad Dressing SULTANA 1 QT. JAR 37¢
 - Corned Beef Hash BROADCAST 16-OZ. CAN 29¢
 - Krey's Pork or Beef SLICED-IN BROWN GRAVY 16-OZ. CAN 49¢
 - College Inn Whole Chicken 3 1/2-LB. CAN 1.39
 - Perfect Strike Salmon CHUM 16-OZ. CAN 37¢
 - Dole Fruit Cocktail 17-OZ. CAN 25¢

- Iona Tomato Juice 46 Oz. Can 19¢
- Tomato Catsup SCOTT COUNTY OR RIFLEY BRAND 2 1/2-OZ. BOTS. 25¢
- Dex Shortening ALL VEGETABLE 3 LB. CAN 75¢
- Cut Green Beans IONA 15 1/2-OZ. CANS 31¢
- Golden Corn A&P FAMILY WHOLE KERNEL OR CREAM STYLE 2 16-OZ. CANS 27¢
- Freshlike Green Peas 12 1/2-OZ. CANS 37¢
- Sunnyfield Flour 25 LB. BAG 1.69
- Stokely's Pickles PROCESSED DILLS OR KOSHER STYLE DILLS 22-OZ. JAR 39¢
- Pie Crust Mix JIFFY BRAND 9-OZ. PKGS. 29¢
- Tomato Soup ANN PAGE 4 10 1/2-OZ. CANS 35¢
- Yukon Beverages ASSORTED FLAVORS 3 24-OZ. BOTS. 29¢

- Cheddar Cheese 1 LB. 49¢
- Sunnyfield Butter 93 Score 1 LB. Carton 73¢
- Silverbrook Butter 1 LB. PRINT 69¢
- Ghed-O-Bit AMERICAN or PIMENTO CHEESE FOOD 2 LB. PKG. 79¢
- Cream Cheese PHILA. 2 8-OZ. PKGS. 29¢

- JANE PARKER White Bread 20-Oz. Loaf 17¢
- Pineapple Pie A REGULAR JANE PARKER 49¢ VALUE NOW ONLY 39¢
- Angel Food Ring 13 EGG RECIPE REGULARLY 59¢ NOW ONLY 49¢
- Coffee Cake A DELICIOUS TREAT! DATE FILLED EACH 29¢
- Sandwich Cookies TASTING VARIETIES PKG. OF 12 19¢
- Potato Chips JANE PARKER—A REGULAR 69¢ VALUE 1 LB. BOX 59¢

- Peanut Butter VELVET 32-OZ. 77¢ 11-OZ. JAR 39¢
- Cranberry Sauce OCEAN SPRAY 16-OZ. CAN 23¢
- Cat Food PUSS 'N' BOOTS 2 15-OZ. CANS 27¢
- Watermaid Rice 2 LB. 35¢
- Corned Beef SWIFFTS 12-OZ. CAN 51¢
- Ivory Soap MEDIUM SIZE 3 CAKES 23¢
- Duz LARGE PKG. 27¢ GIANT PKG. 63¢
- Crisco 1 LB. CAN 32¢ 3-LB. CAN 87¢
- Camay Soap REGULAR SIZE 3 CAKES 23¢
- Silver Dust REGULAR SIZE 28¢ GIANT PKG. 55¢

- My-T-Fine PIE FILLING OR PUDDINGS 3 4-OZ. PKGS. 17¢
- Lifebuoy Soap REG. SIZE 3 CAKES 23¢
- Palmolive Soap BATH SIZE 2 CAKES 21¢
- M & M Candies 3 5¢ BAGS 25¢ 7-OZ. BAG 25¢
- Sweetheart Soap REGULAR SIZE 3 CAKES 23¢
- Sweetheart Soap BATH SIZE 2 CAKES 21¢
- Blu-White 2 2 1/4-OZ. PKGS. 17¢
- Cashmere Bouquet 2 BATH CAKES 21¢

CHICKEN-OF-THE-SEA Tuna Fish

AMERICA'S FOREMOST FOOD RETAILER... SINCE 1859

A&P Food Stores

THE GREAT ATLANTIC & PACIFIC TEA COMPANY