

LEGAL NOTICES

Forbes S. Masall, Atty., Brigs Bldg., Birmingham, Ala. 35201. STATE OF MICHIGAN - In the Probate Court for the County of Oakland...

ADVERTISMENT FOR BIDS For the Addition to Walnut Lake Elementary School, Birmingham, Michigan...

Stop moisture damage ELECTRICALLY. Only \$139.75. FRIGIDAIRE Electric Dehumidifier. This revolutionary new Dehumidifier takes moisture from the air...

Ask About Free Home Trial! CRAIG APPLIANCES 112 No. Woodward Phone MI 4-2525. You Are Cordially Invited to Inspect OUR MODERN STORAGE...

You Are Cordially Invited to Inspect OUR MODERN STORAGE. LOCAL AND LONG DISTANCE MOVING. Gaukler Storage Co. 9 Orchard Lake Ave., Pontiac, Mich. Dial "O" ask for Enterprise 6305



THE VACATION BIBLE school at the First Methodist church ended last week with a complete display of the work they have done during the two-week term.

SUNDAY SERMON TOPICS SUNDAY, JULY 12 Christian Science What constitutes true sacrifice will be explained in the sermon, "Sacrament." The text is from 1 Corinthians, 5:8...

First Presbyterian Taking his text from Ephesians 2:8, "For by grace are ye saved through faith; and that not of yourselves, it is the gift of God..."

Ascension Lutheran At both the 8:30 and 11 a.m. services, the Rev. Paul Shippert will preach on "Acceptance." His text is taken from the 8th chapter of Acts, verses 26-38.

Congregational "Reproducible Religion," will be the topic on which the Rev. E. W. Wilcox, D.D., will preach at Sunday's services in Adams school.

Larger Enrollment Increase Program For Bible School

The Rev. Paul Shippert of Ascension Lutheran church reports a marked increase in activities of the 1953 Vacation Bible school. Enrollment has jumped from 80 to more than 100 pupils...

Our Shepherd Lutheran Plans Summer Schedule

The Rev. H. G. Alward of Our Shepherd Lutheran church, this week announced the summer schedule of services. Two preaching services are planned each Sunday to be held at 8 and 11 a.m.

TYPEWRITERS ADDING MACHINES REPAIR. Birmingham Printing 309 EAST MAPLE - MI 4-4740. New and Rebuilt Typewriters For Sale - Rentals

COMBAT "DUTCH ELM" by trimming - since elm bark beetles lay eggs on dead limbs only. PHONE LI. 3-8132



REV. J. W. MURCHISON

Halsey Baptist Church BIRMINGHAM 1755 Livermore 1 Block North of Maple Sunday School 10:00 A.M. Morning Worship 11:15 A.M.

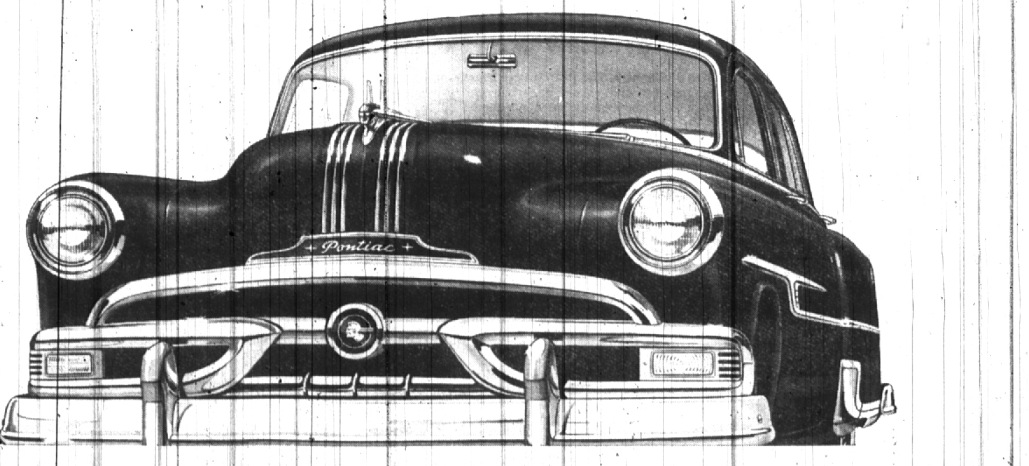
PRESCRIPTION SUN GLASSES YOUR PRESCRIPTION GROUND IN SUN GLASSES & SINGLE VISION OR BIFOCALS No Need For Eye Examination.

Norman R. Becker, O.D. And Staff 129 E. MAPLE MI 4-0644. COMPLETE LENS GRINDING SHOP ON OUR PREMISES

Leaves Christ Church To Accept Assistant Pastors in Detroit The Rev. Joel William Murchison has completed his Fellowship year at Christ Church, Cranbrook, and has accepted a post as assistant to the Rev. G. R. Berkeley at St. Columbia's church in Detroit.

Lawrence E. Smith Landscape Design and Construction 135 N. Woodward in the Wilson Building Phone MI 4-2036

Nothing Like It for BEAUTY! PERFORMANCE! VALUE!



Dollar for Dollar you can't beat a Pontiac. It's very easy to see why Pontiac stands alone in its ability to match features and quality with the finest cars - yet at a price so low that it's within the means of any new-car buyer. First - look at its beauty. Pontiac's distinctive styling is instantly recognized and universally admired.