

You'll Save on Canned Juices...
You'll Save on Frozen Juices!



DOLE or Del Monte
PINEAPPLE JUICE
2 Giant 46 oz. Cans **59¢**

ROYAL GEM
TOMATO JUICE
Giant 46 oz. Cans **2 For 35¢**

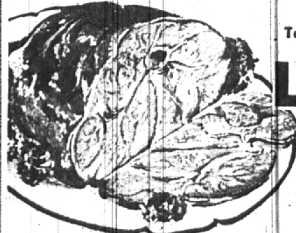
Sunkist Pure Lemon Juice 5 1/2-oz. Cans 2 for 25¢
Realime Brand Limeade 6-oz. Cans 2 for 29¢
Pure Fruit Hawaiian Punch Giant 46-oz. Can 39¢
Wilrick's "4 to 1" Grape Drink Concentrated 6-oz. Cans 2 for 29¢
Reconstituted Realemon Juice Pint Bottle 35¢
Sunwest Prune Juice Quart Bottles 3 for \$1.00

Red Sockeye Salmon Deming's Fancy Tall 1-lb. Can **63¢**

Dole Sliced Pineapple 3 No. 2 1/2 Cans **\$1.00**

Hunt's Peaches California — Halves or Slices — No. 2 1/2 Can **25¢**

Coffee * Maxwell House * Beech-Nut * Hills Bros. 1-lb. Vac. * Del Monte * White House — Your Choice. Can **79¢**
Chase & Sanborn or Don De Coffee 74¢



Tender, Young Michigan Milk-Fed
LEG O'VEAL
Delicious Served Hot or Cold **45¢ lb.**

Michigan Milk-Fed **VEAL ROAST**
Shoulder Cut — Knuckle Bone Removed 4 to 5 lb. Avg. **39¢ lb.**

Michigan Milk-Fed Veal Chops Meaty, Blade Shoulder Cuts lb. **55¢**
Michigan Milk-Fed Veal Breasts Fine For Packet Roast with Dressing lb. **25¢**

Fresh, Lean **Ground Beef** For Meat Loaf or Hamburgers — 3 1/2 lb. **3 lbs. \$1.00**

"Naturally Tender" **Rib Roast Beef** Table Trimmed Steading 7" Cut — Graded Choice lb. **59¢**

Tender, Young **PORK LOIN ROAST**
First 7 Rib Cut **45¢ lb.**

Mickelberry's **Beer Salami** Sliced or Any Size Piece lb. **69¢**

Glendale's Rosen **All Beef Franks** Tender, Juicy Milk. Grade lb. **59¢**
Fresh Georgian Bay **White Fish** Dressed — Fine For Baking or Frying lb. **39¢**



TOP FROST
Fresh Frozen Concentrated
ORANGE JUICE
6 oz. Cans **7 For \$1.00**

Grape Juice Top Frost Fresh Frozen 4 6-oz. Cans 77¢
Limeade Seal-Sweet Fresh Frozen 4 6-oz. Cans 77¢
Tangerine Juice Minute Maid Fresh Frozen 4 6-oz. Cans 77¢
Grapefruit or Blended Fresh Frozen 8 6-oz. Cans \$1.00
Top Frost Ice Cream All Flavors 1/2-gal. Pkg. 89¢

TOP FROST Fresh Frozen
LEMONADE
6 oz. Can Makes 1-Full Quart **6 For 99¢**



Now... **JIFFY BAGS**
With All Frozen Foods AT NO EXTRA COST!

This insulated melt-proof Jiffy Bag is furnished for your convenience. It will keep frozen foods in perfect edible condition for one hour if kept sealed.



Florida Gold **ORANGE JUICE**
Giant 46 oz. Cans **2 For 49¢**

WELCH'S Pure **GRAPE JUICE**
Large 24 oz. Bottles **3 For \$1.00**



Tru-Blu Cultivated **BLUEBERRIES**
Giant Size For A Delicious Desert Treat **29¢ Pint Basket**

Honeydew Melons California Vine-Ripened Thick Meated — Size 12 Each 39¢
Red Ripe Watermelon 32-lb. Average 1/2 Section 65¢
Head Lettuce Kool-Krip Cutl. Iceberg Large 48 Size Heads 2 Heads 29¢
Cantaloupes Arizona Vine-Ripened Thick Meated — Thin Skinned Large 27 1/2 29¢
Sunkist Lemons California Full o' Juice Large 252 Size 5 For 29¢



HUNT'S Pure **TOMATO CATSUP**
Large 14 ounce Bottles **2 For 25¢**



Del Crest **AMERICAN CHEESE FOOD**
2 lb. Loaf **79¢**

Parkay Margarine 1-lb. Ctn. 29¢
Creamery Butter 1-lb. Print 69¢
Toddy Chocolate Malt 8-Oz. Tin 11¢
Cottage Cheese 3 for 32¢ 16-oz. Carton 24¢
Cream Cheese Philadelphia or Borden's Assorted — 3-oz. Pkg. 2 For 29¢



Medium Sharp Cheese **PINCONNING**
Tasty and Tangy **59¢ lb.**

LA CHOY Get Acquainted Offer... No. 2 Can **BEEF CHOP SUEY 59¢**
plus 4 Serving Can of NOODLES For \$1.00
La Choy Bean Sprouts 19¢

69¢ Value!... Non-Spill Salt and Pepper Shaker with **Bon French Salad Dressing All For 39¢**

1/2 Price Sale! **Bab-O Cleanser 3rd Can for 3 Cans 32¢**
Only 1c

All Vegetable **Crisco Shortening For Better Baking 3-lb. Can 85¢**

SAVE 10¢ **TENDER-LEAF TEA 58¢**
Reg. 68¢ 1/2-lb. Pkg.
Reg. 58¢ 48 Ct. Bags **48¢**



SEE and HEAR — "THE CISCO KID" on WXYZ-TV, Channel 7, Every THURSDAY from 7:00 to 7:30 P.M. — Also See "THE LADY OF CHARM" on WXYZ-TV, Channel 7, from 11:00 to 12:00 P.M., MONDAY, WEDNESDAY, THURSDAY and FRIDAY!

635 SOUTH WOODWARD ★ ★

Open Thursday, Friday and Saturday 'Til 9 p.m.