



**ATOMIC TUMMY**—Checking the atomic-engine-filled stomach of this model of the submarine Nautilus, an exhibition at Atlantic City, N. J., is Electrician I/O, William Christian. The vessel, now under construction at Groton, Conn., will be the world's first atom-powered sub. It will be capable of running for months under water at a speed of 20 knots.

### Prosecutor To Enforce Bingo Ban

Frederick C. Ziem, prosecuting attorney for Oakland county, acting in support of a resolution passed by the Prosecuting Attorneys' association for the State of Michigan, has reminded all Oakland law enforcement officers he expects enforcement of the state's laws affecting bingo, raffles and certain games of chance and lotteries.

Ziem pointed out that until such time as the state law is changed, this ban should be enforced equally in all counties. He said the association has promised to support state police, sheriff's departments and local police whenever they are called upon to take official action against any violator of this state law.

"IF THE people desire a change in the laws on gambling, it must be done by the people themselves through their duly elected legislators or by their own referendum. Until such time, it is not a matter of choice on the part of any law enforcement officer as to which laws shall or shall not be enforced, nor against whom," the prosecuting attorney's association resolution states.

### Police Did A Good Job

J. E. Lane, B. F. Pasik and R. L. Neff are the signers of a note of appreciation to Police Chief Ralph W. Moxley, expressing the gratitude of all Birmingham Hills subdivision residents for the excellent traffic regulation during Birmingham police maintenance in the area during the recent tournament at the Birmingham country club.

### Appreciates Willets Work

A note of appreciation for street grading, silling and surfacing has been received by Birmingham city commissioners from George S. Wiley, 504 Willets.

"The work on Willets avenue, between Chester and Greenwood is an excellent one and has won the commendation of residents as well as the many automobile drivers who use it," Wiley wrote.

### Have You Met . . .

Former residents of LaPorte, Ind., Mr. and Mrs. George W. Frushour and their two sons, George Jr., 8, and Stephen T. The Frushours moved to 1150 Smith street July 18. Frushour is a design engineer for Dearborn Motors. A graduate of Purdue, he is a member of the American Society of Agricultural Engineers, and belongs to a Masonic Lodge. Mrs. Frushour, a registered nurse, is a graduate of Indiana University and affiliated with Beta Sigma Phi. The Frushours are members of the Presbyterian Church.

Household Goods of every description are offered for sale in the Classified Columns of The Birmingham Eccentric.

### Michigan Stream Improvement



Conservation department crews will be busy again this year improving some of Michigan's lakes and streams. The work includes a variety of activities, such as placement of small dams and deflector logs, planting of erosion stopping growths and pollution control. Here a crew, working on the North Branch of the Au Sable plants a "digger" log. The current will move around the log and dig deep fish pools in the stream bed.

### City Engineer Reports Increased Street Miles

City Engineer L. R. Gare's report to Birmingham city commissioners shows an additional 12 miles of major streets and 111 local streets over last year's total. Current mileage amounts to 10,111 major and 59,333 local streets.

These classifications are prepared by the city for submission to the state highway commission and upon approval are used as a basis to figure state allocations of highway monies to the city.

### New Truck for Firemen

Purchase of a new 3/4 ton Chevrolet pickup truck for the Birmingham fire department has been approved by city commissioners. Purchase will be made from North Chevrolet, lowest of the three bidders, for \$489.20 plus trade-in of the 1950 truck now in use.

## RADIO AND TV SERVICE

**Pick Up & Delivery**

- General Electric
- Spartan
- Dumont

*Leonard's*

HOME RADIO SERVICE  
MI 4-3933  
162-166 W. Maple

**POTTER**  
Moving & Storage Co.  
136 Brownell  
Phone MI 4-4612

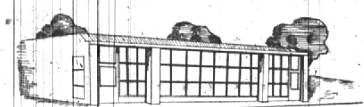
no. 1 specialist in long-distance moving!

agent for **ALLIED VAN LINES, Inc.**  
See Us on U.S. Highways—No. 1 in Service—No. 1 in Your Community

**HEARING AIDS and BATTERIES**  
for ALL MAKES  
Make Inquiry at Our Store and Get All of the Details  
MI 4-2121

**SHAIN'S**  
DRUG STORE  
105 W. Maple

**Birmingham LOCKSMITH Service**  
Midwest 4-7939  
DAY AND NIGHT CITY-WIDE SERVICE  
Auto-Home-Office-Luggage  
256 S. Woodward



Spring Air

**MATTRESSES and BOX SPRINGS**

Wieland's

UPHOLSTERY DRAPERIES  
523 N. Woodward Ave., Phone MI 4-2530

*At Home . . .*  
Enjoy the Health-Giving Benefits of **Mountain Valley Mineral Water** from Hot Springs, Arkansas

Yes, Mountain Valley Water is a natural mineral water, bottled as it flows from the Mountain Spring at the famous health resort at Hot Springs, Ark. Many doctors have found it helpful in treating patients suffering from discomfort of arthritis, rheumatism, high blood pressure, kidney, bladder and other functional disorders. And Mountain Valley Water is pure water, safe and beneficial for children and adults of all ages.

The Mountain Valley Mineral Water for 30 days . . . ask to have Mountain Valley Mineral Water delivered to your home tomorrow.

\* DELICIOUS TASTING \* NON-LAXATIVE

**Mountain Valley**

180 W. Maple    **SPIRE BROS. MARKET**    MI 4-1500  
138 W. Maple    **ERWIN & SMITH**    MI 4-2811  
297 E. Maple    **RITTER'S BEVERAGES**    MI 4-3444  
W. Long Lake Rd.    **BLOOMFIELD MARKET**    MI 4-8814  
HUNTINGTON WOODS MARKET    MI 4-3324

Want ads cannot be accepted after 5 p.m. each Tuesday.

A Triangle

*Star Special!*

**WROUGHT IRON OUTDOOR FURNITURE**

SO RIGHT FOR SUMMER LIVING!

**5 Piece Dinette Set**  
in Charming Wrought Iron

\$10.95

America's most famous MODERN SLING CHAIR

- Sit comfortably in any position
- Removable washable heavy canvas sling
- Heavy 1/2" black wrought iron frame
- Yet dyed in black, red, yellow or green
- Indoors or outdoors, use it in any room

For Viewing  
For Plain Retailing  
For Outdoor Living

Open Friday Evening Until 9

Triangle

FURNITURE CO.  
4 Great Stores

It's breathtakingly different! The very latest creation in modern dining pleasure. Fits perfectly into sunny dinette or outside patio. Chairs are covered in tan plastic. Heavy glass top.

\$59.50

- Table 48 1/2" x 28 1/2" x 29"
- Chair Seat 16" x 15"
- Chair 16 1/2" Tall

CONVENIENT CREDIT TERMS

Birmingham: 128 S. WOODWARD  
Royal Oak: 324 WEST 4<sup>th</sup> WASHINGTON SQUARE BLDG.  
Ferndale: 221 WEST 9-MILE ROAD  
Mt. Clemens: 81 NORTH GRATIOT