

Relish, green and half red. Remove the seeds and stems. Put through the food chopper. Use green tomatoes and onion. Measure each after they have been put through the food chopper. Use half as much tomatoes as peppers, half as much onions as tomatoes. Mix well, salt generously. Put in a bag and let drip over night. Next morning put vegetables in a porcelain vessel and cover with sweetened vinegar. To each 1/2 gallon of vinegar put 3 cups of sugar and 1 teaspoon each of cinnamon, allspice cloves, nutmeg, tumeric and black pepper. Mix thoroughly by stirring and boil 5 minutes. Fill sterilized jars and seal.

Want ads cannot be accepted after 5 p.m. each Tuesday.

Phone Service Double That of 7 Years Ago

The number of telephones in the Birmingham area has more than doubled in the past seven years, according to Walter B. Fausser, manager of the Birmingham office of the Michigan Bell Telephone Company.

By the first of January, 1946 there were 7,179 telephones in the Birmingham exchange; that number has risen to 17,330 by July 1, 1953.

Only 85 per cent of the households in Birmingham had telephone service in 1946. Now 98 per cent of them have it. There are 78,000 originating outgoing calls per day now, but there were only 33,000 in 1946, according to Fausser.

Since 1946, Michigan Bell has provided telephones for twice as many Birmingham customers, speeded long distance service to a point where the out-of-town party can be reached in an average of 3 1/2 minutes, and enlarged toll free areas for 9 out of 10 customers.

DEPENDABILITY of the telephone has been increased to where the average phone works for five years without any mechanical trouble, Fausser mentioned.

Since 1946 a total of \$4,352,757 has been spent on construction of and improvement to the Birmingham exchange. The largest amount, \$1,966,231, was spent in 1949 on construction of the exchange—a two-story, modern building on Merrill street.

The budget for 1953 has been set at \$794,000 which is being used to add a third floor to the exchange, said Fausser.

In recent years Michigan Bell's costs have risen but telephone prices have gone up comparatively little. General prices, according to Fausser, have risen 91 per cent whereas telephone prices have increased only 27 per cent.



DOWN TO EARTH July Is 'Last Call' For Pruning Shubbery

By ALICE WESSELS BURLINGAME
Special Writer for The Birmingham Eccentric

This time of July is the "last call" for trimming your early spring flowering shrubs. If you trim them now you can be assured of a good show for flowers next spring. I am thinking of forsythia, Nanking cherry, spiraea, etc.

The correct way to do it is to survey the base of the shrub and cut out the older canes. The results may look thin to you at the moment but it won't take long before new growth will fill in and it is this new growth which will produce flower canes for next year.

In order for a shrub to fit a location it is sometimes necessary to curtail the end growth but under ordinary circumstances it is best to allow the shrub to take on a "founder" appearance.

Be sure to include lines on your list of shrubs to be trimmed as the flower bud is forming in the fall of a tip growth. Also check the bark of the shrub. If it has a scab, be sure and spray it as scale takes the heart out of a good specimen of leaf.

There was a feeling of harmony from the gentle curves of the flower bed. The beds were disciplined by a metal edging, perhaps six inches deep. This feature would assure the original site of the designed bed as well as make maintenance easier.

A VINE USED was Akebia Quinata or Five Lobe Akebia. It has a potential height of 12 feet. It is hardy and disease free.

At the far end of the garden is a terrace, perhaps 30 feet above the ground as a part of the architectural features of the old building. Wide stairs go down each side of the terrace, to a huge stone bench, perhaps 30 feet long, free flowing in design.

Further information on this beautiful garden will be given next week.

THE VOGUE ROSE has interesting ripply leaves, sturdy giving a texture which is important. This rose has coral, well formed flowers.

Geranium red is another fairly new rose. Its flower is double and somewhat resembles a carnation.

The Independence tree rose has the usual attributes giving a vertical accent but that red rose is a "whistle stop," as you often hear me proclaim. Its a clear red color which rings with patriotism.

There was a fine accent in this rose garden, a reflecting ball with a square bed around it with 12 units of the vogue rose to form a constant sea of coral color.

In this garden I saw a geranium which sent me scotting to a book for information on Valeriana or Contrahus, a form of golden bellotrope and is showy for dry, sunny borders or banks.

IT WILL GROW about three feet high and will be a lush perennial. This is a plant which is a good investment because it will flower all summer and give you an abundance of cut flowers. It is an herb.

The Strigley garden has been described in its entirety before but 1953 reactions cannot go unheeded. That compost pile behind the tool house has the touch of a "solid" gardener.

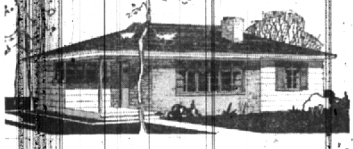
The south side of the property has a large beauty bush border planting which provides a wonderful splash of coral color in June.

Around the evergreen and shrubs in front of the property they had planted impatiens due to shade from tree. What a show of color they are counted until the first killing frost!

MANY FOLKS like to take cuttings of impatiens and use them for house plants during the winter. Due to their sensitivity to chilly nights in late August, it is important to take those cuttings before the middle of the month for best results. Otherwise the cuttings are apt to rot due to the change in

FIRE EXTINGUISHER RECHARGING
FREE PICKUP AND DELIVERY
Phone MI 4-2228
CRAIG APPLIANCES, INC.
112 S. WOODWARD

Enhance Your New Home with an ASPHALT DRIVE



Attractive • Economical • Durable

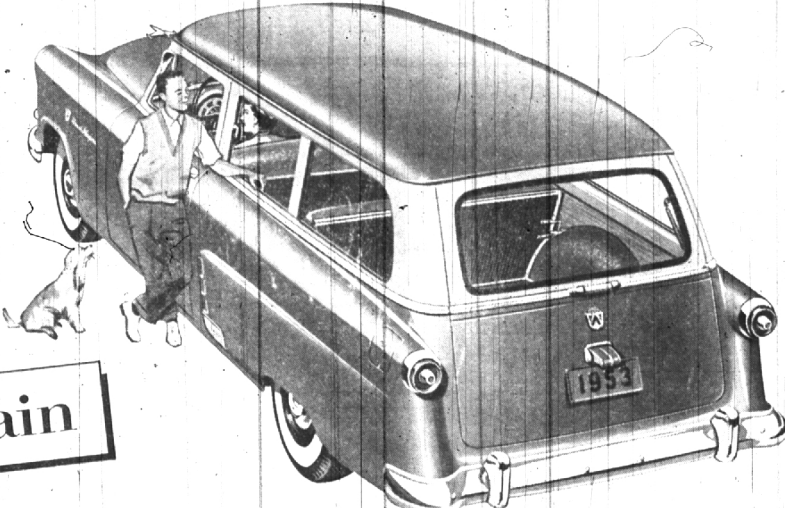
Plan and Build Your Driveway Correctly — Call

ANN ARBOR CONSTRUCTION CO.

Call MAPle 5-1601 For a Free Estimate

Ford Ranch Wagon

It's a 6-passenger sedan that "doubles" as a hefty hauler, too. Available with either Ford's high-compression Six or V-8.



Look again

There are 6 cars on this page!

Each of Ford's 3 great station wagons is actually 2 cars in 1!

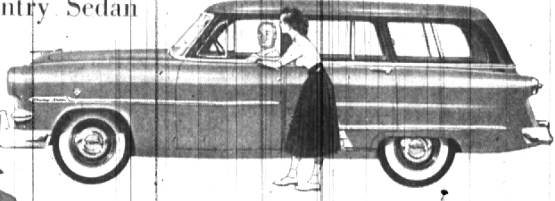
No matter which Ford station wagon you choose, you get a roomy passenger car that converts to a cargo carrier in a jiffy! Take Ford's 2-door Ranch Wagon, for instance. There's room aplenty for six big people inside its brilliant Crestmark body. Or, by merely folding the "stowaway" seat into the

floor, you have over 6 1/2 feet of level load area. Ford offers two 3-passenger "quick change artists", too. And no matter which of the three you choose, you get foam rubber cushions and new spring and shock

absorber action, easier working "suspended pedals," a choice of Fordomatic, Overdrive or Conventional and a host of other "Worth More" features that make Ford worth more when you buy it, worth more when you sell it.

Ford Country Sedan

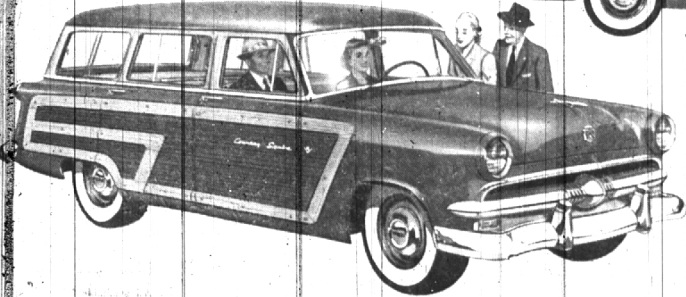
This all-metal counterpart of the Country Squire is equally at home on the farm or "on the town". It's a 8-passenger big, has nearly 8 1/2 feet of load space,



Ford Country Squire

This double-duty beauty has room for eight or a half-ton of freight. All-metal body handsomely trimmed with Genuine Maple or Birch.

See them... Value Check them... Test Drive them!



America's largest selling station wagons... **Ford**

HAROLD TURNER, Inc.

Turn to Turner — Your Friendly Ford Dealer

444 50. WOODWARD AVENUE

PHONES MIDWEST 4-7500 or JORDAN 4-2666

Lawrence E. Smith
Landscape Design and Construction
135 N. WOODWARD
in the Wilson Building
Phone MI 4-2036

BIRMINGHAM TRAVEL SERVICE
for Wherever You're Going
MI 4-5711 379 Hamilton

BRILL ELECTRIC CO.
Residential — Commercial
Light Industrial Wiring
Prompt Service
Phone LI. 6-3500

BIRMINGHAM FRUIT CO.
124 Mid-west
N. Woodward 4-4030
PREMIER COFFEE
89c lb.
FREE DELIVERY
Free Parking at Rear of Store

WABEEK STATE BANK
A FRIENDLY BANK
NO WORRIES ABOUT LOST RECEIPTS WHEN YOU PAY BY CHECK
It's good business to pay your bills by check. There's never any question as to whom, when, and how much you've paid—because you have a permanent record in your check book and in the cancelled checks returned to you. You'll save time, worry, and money, too, by opening a checking account at this friendly bank. Come in today and let us show you how easy and inexpensive it is to pay by check.

WABEEK STATE BANK
of DETROIT
BIRMINGHAM OFFICE—WABEEK BUILDING