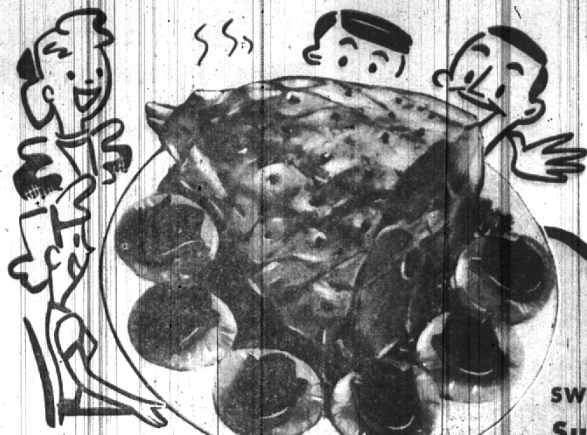


Get all the Foods for a Glorious Fourth from ...

# WRIGLEY'S



**RATH'S Blackhawk Boneless CANNED HAM** Full Cooked Ready-to-Serve 9 to 11-lb. Avg. **93¢** lb.

Pork Loin Roast 45¢  
 Fresh Ground Beef 3 Lbs. \$1.00  
 Tom Turkeys - Oven Ready 1 Lb. 57¢  
 Frying Chicken Drumsticks 1 Lb. 79¢  
 Armour Star Thuringer 1 Lb. 59¢  
 Skinless Franks 1 Lb. 49¢  
 Large Bologna 1 Lb. 39¢  
 Variety Luncheon Pack 1 Lb. 49¢  
 Liver Sausage 1 Lb. 49¢

Tender, Young, Nourishing Rich in Protein - First 7-Rib Cut Ideal for Hamburgers or Meat Loaf (3 1/2 Lb.) Tender, Young 16 Lbs. and Up Delicious Served Hot or Cold Any Size Piece  
 "Mickelberry, Glendale or Peskhe High Grade #1"  
 Glendale or Peskhe High Grade #1 - Any Size Piece Mickelberry Sliced Mickelberry's Delicious Fresh or Smoked - Any Size Piece

## Smoked HAMS

Wilson's Certified or SWIFT'S Premium Sugar Cured  
 Cut From 12 to 16-lb. Hams  
 Full Shank Half **65¢** lb.  
 Butt Portion 77% Whole Ham 73¢

SHOP EARLY IN WEEK... AVOID THE WEEK-END CROWDS! Thursday and Friday are normally very heavy shopping days. This week particularly, with July 4th falling on Saturday - crowds will be even greater. Be Smart... avoid the crowds! SHOP MONDAY - TUESDAY AND WEDNESDAY!

RAX BRAND Fancy Pack  
**SOLID WHITE MEAT TUNA FISH**  
 3 Cans **79¢**



MAPLE LEAF Imported Boneless **CANNED HAM** Fully Cooked Ready-to-Serve 1 1/2-lb. Can **\$2.09** Each



CHASE & SANBORN **COFFEE** Drip or Perk Pressure Packed 1-lb. Can **74¢**  
 All National Brands of **COFFEE** Drip or Perk 1-lb. Can **79¢**



Premium Mustard 20 1/2-oz. Ice Box Jar 19¢  
 Hot Dawg Relish 10-oz. Jar 25¢  
 Whole Sweet Pickles L & S 24-oz. Jar 49¢  
 Chicken Noodle Dinner Plain, Kosher or Polish Qt. Jar 25¢  
 Dill Pickles AUNT JANE'S Fresh Pack 37¢  
 Large Ripe Olives BELL'S Tall No. 1 Can 29¢  
 Shoestring Potatoes PICNIK 4-oz. Can 24¢  
 Krun-Chee Potato Chips With "Magic Pak" New 1-lb. Bag 79¢  
 Kool-Aid Drink 6 Refreshing Delicious Flavors 6 3c Pkgs. 27¢

CAMPBELL'S **TOMATO JUICE**  
 Giant 46-oz. Can **25¢**



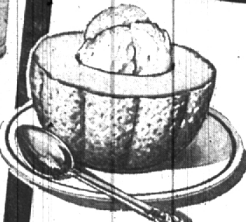
Dixie Salad Dressing It's Homogenized Full Quart Jar **39¢**  
 Libby's Baked Beans Deep Brown 3 Varieties 2 14-oz. Cans **25¢**  
 Swift's Prem Luncheon Meat - Slice It - Dice It Bake It - Fry It - Try It! - 12-oz. Can **39¢**  
 Mario Olives "Queens" No. 12 8-oz. Ice Box Jar **29¢** "Stuffed" No. 12 8-oz. Ice Box Jar **39¢**  
 Blue Ribbon Napkins 60 Ct. Rainbow or 80 Ct. White 2 Boxes **23¢**



Famous For Flavor  
**North Bay AGED CHEESE**  
 Aged 2 Years - Tasty & Tangy  
**lb. 69¢**

Kraft's Deluxe **CHEESE SLICES**

American or Pimento 8 Slices In 8-oz. Pkg. **31¢**  
 Double Wrapped 1-lb. Print **69¢**  
 Creamery Butter Piece or Sliced - lb. **45¢**  
 Fancy Wisconsin Cheese Del Crest Cheese Food 16-oz. Carton **39¢**  
 Brick on Muenster Dean's - Serve Hot or Cold 8-oz. Tin 3 for **29¢**  
 American Yellow Margarine 1-lb. Carton In Quarters **27¢**



California Vine-Ripened **CANTALOUPE**  
 Thin Skinned Thick Meated **JUMBO "27 SIZE" 29¢**

Southern Grown Extra Fancy **LONG GREEN CUCUMBERS** For Delicious Summer Salads **4 for 19¢**  
 Carolina Red Haven Freestone Peaches 2 lbs. **45¢**  
 Florida Large Juicy Persian Limes 200 Size Dozen **49¢**  
 Thompson California Seedless Grapes Large Clusters Lb. **39¢**  
 California Santa Rosa Red Plums Large Firm Juicy 2 lbs. **39¢**  
 California Valencia Oranges Full O' Juice 220 Size - Doz. **49¢**

TOP FROST Fresh Frozen Concentrated **Orange Juice** 6 6-oz. Cans **89¢**  
 South Coast French Fentail Breaded Shrimp 10-oz. Pkg. **69¢**  
 Taste O' Sea Frozen French Fried Perch. 10-oz. Pkg. **39¢**  
 Birds Eye Frozen Chicken Pot Pies 8-oz. Pkg. **39¢**  
 Blue Boy Frozen Sliced Strawberries 4 10 1/2-oz. Cans **1.00**  
 Top Frost Rich, Creamy Ice Cream All Flavors 1/2-gal. Pkg. **89¢**

GRAND DUCHESS Frozen **BEEF STEAKS** 11 oz. Pkg. of 4 **59¢**



SEE and HEAR "THE CISCO KID" on WXYZ-TV, Channel 7, Every THURSDAY from 7:00 to 7:30 P.M. - Also See "THE LADY OF CHARM" on WXYZ-TV, Channel 7, from 11:00 to 12:00 P.M. MONDAY, WEDNESDAY, THURSDAY and FRIDAY!

**635 SOUTH WOODWARD** ★ ★

Open Thursday, Friday and Saturday 'Til 9 p.m.