

Gardens Return Love With Abundant Beauty

By ALICE WESSELS BURLINGAME
Special Writer for The Birmingham Eccentric

Michigan State college for over five years has been developing its largest campus like an arboretum.

There plant lovers can observe rare trees and shrubs. They are attractively labeled so that the admirer can write down the variety and then go to the Plant Buyer's Guide for the purchase source. A copy is in the Baldwin library.

LOOK AT YOUR WINDOW SHADES OTHERS DO TOP VALUE... IN LOW COST WINDOW SHADES

V-4

by *Bannan*

- ★ COSTS LESS
- ★ EASIER TO CLEAN
- ★ FLAME RESISTANT
- ★ WATERPROOF

and **COLORFAST**

SPECIAL \$1.39

This and many other qualities to choose from.

Bring us your old rollers if sizes are to be cut down.

THERE'S ALWAYS A BARGAIN AT

AUSTIN'S

W. 12 MILE RD.
East of Dept. Office, BERKLEY
LI 1-6070
Open Friday and Saturday Evenings



After July first I saw a magnificent shrub in flower. The four petals of the flower gave an appearance of forming a four inch square.

I know that the true flower is composed of two petals and the stamen-like arrangement in the center and the flower petals are really sepals. The foliage is bright green, and the leaves are set in the fall.

Mrs. Burlingame says that it should be transplanted in the spring only, will grow upright and perform the shade.

This Kousa dogwood is also known as the Japanese dogwood. Note its late flowering date and if you want a "whistle item" in your garden place the Kousa dogwood at the head of the list.

At this date most of you are leaning toward the door, vacation bound. Now here is the big question: What shall I do with my house plants?

I CAN GIVE you two suggestions if you want the assignment covered for two weeks.

The first idea is to make a pile of newspapers on your basement floor, and saturate them with water. Then place on the damp pile of papers your freshly watered house plants.

As an alternative plan for house plant care while you are vacationing, take some porous brick and soak them overnight in your laundry tub. Have the water about four inches over their tops. Next morning drain the water to one inch below the top of the bricks and place your freshly watered house plants on them.

Have been looking over the 1953 rose introductions and still like the peace rose developed in France by Francis Meiland. When King Edward saw it he said, "Here is the greatest rose of the generation. It should make you a fortune."

According to Fred Edmunds, the famous roseman from Portland, Ore., Meiland still receives a royalty from each peace rose sold in this country.

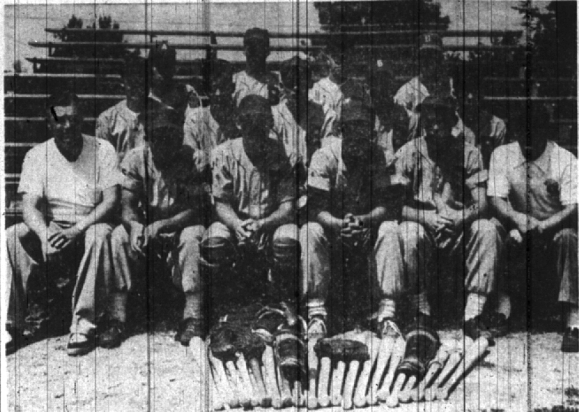
RESEARCH HAS shown rose fanciers that if they cut their choice roses after 4:30 they will last 10 hours longer.

In order to know this pet of all gardens let's get better acquainted with its habits.

In the winter it stores its food in its stems and roots. Therefore when the late winter and early spring days are favorable the rose thrives on this warehouse.

As for a good location, it must give the rose at least four hours of sun a day and drainage is a must.

Your rose will thank you for fertilizing every three weeks. Place it



THE CHARLES EDWARDS POST AMERICAN LEGION nine will again represent the 18th district at the zone finals here Friday, Saturday and Sunday at the high school field. Defending district champions, the Birmingham team lost only one game during the first half of the season. Posed for a team shot are: Back row—left to right, Tom McCormick, Bill Watson, Dick Sheldon and Kirk Plack. Center row—Ed Goodfellow, Mike Groves, Bennett Wright, Mickey O'Connor, and Bob Libby. Front row—Al Voss, post sports coordinator; Danny Cornia, Jerry Beck, Jerry Wedge, Tom Beck and Herb Kelly, team manager. (Eccentric Staff Photo)

over the root tips in a circle with a radius of about four inches.

Leaves are essential for root and top growth therefore you will do all you can to avoid the black spot when leaves fall off. Overhead watering after 3 p.m. gives ideal conditions for this fungus growth. There are sprays you may use after you once have this condition. Remember the leaves of the rose are its lungs, keep them healthy.

EVERGREENS HAVE benefited generously assuring the family of winter garden delight as they enjoy the warmth of their garden living room which projects away from the main portion of the home.

Half of the roof is glass so that wide planter beds around the room are always teeming with exotic house plants as well as forced potted bulbs.

One item I especially liked in this garden was a St. Francis Assisi shrine, about seven feet up a large elm tree. Gardening is close to a religious expression.

AFTER THE MIDDLE of July avoid too much nitrogen in the fertilizer because nitrogen gives the plant a boost resulting in too soft a growth which will be tender during early frosts.

Midsummer cutting of blooms affects full production of flowers. It reduces the foliage area and the plant balance. It will take five to seven weeks for new flowers to follow at the tip where they have been cut.

Recently the Hobart Andreas opened their home at 1013 Glenary circle for garden lovers. At once the visitor is aware of the love the Andreas have for their garden. It shows just like affection is reflected on the face of a child.

The major part of their yard caters to the shade. Their topography is irregular and they have planned their various levels with stone work.

A daily riflery class is being held from 9 to 11:30 p.m. at the police pistol range, one block south of Lincoln on Cranbrook road.

Rifle instructor George Ely, 411 Adams road, is teaching boys enrolled the proper, prone position, range procedure, gun safety and important things about the rifles furnished for the boys, .22 caliber Remingtons with Lyman peep sights.

Ammunition is a penny a round (1 shot) and boys are not to bring their own ammunition of rifles.

You will find many bargains in The Eccentric Classified Columns.

joyful collecting rare iris. Pixes will be coming along soon and forget-me-nots as well as thibbs have played their roles already. Strawberry plants have been selected by Mrs. Coleman as the border for this flower garden. Three lily pools are placed on the property.

THE LESTER COLEMANs were also hosts to visitors at their Rathmore road home in Bloomfield Hills. Their home is on a hill and they had interspersed the hillside with evergreens to frame their ranch in the hillside structure. There was a tire, their driveway is a flower bed for perennials. Mrs. Coleman has en-

joyful collecting rare iris. Pixes will be coming along soon and forget-me-nots as well as thibbs have played their roles already. Strawberry plants have been selected by Mrs. Coleman as the border for this flower garden. Three lily pools are placed on the property.

joyful collecting rare iris. Pixes will be coming along soon and forget-me-nots as well as thibbs have played their roles already. Strawberry plants have been selected by Mrs. Coleman as the border for this flower garden. Three lily pools are placed on the property.

joyful collecting rare iris. Pixes will be coming along soon and forget-me-nots as well as thibbs have played their roles already. Strawberry plants have been selected by Mrs. Coleman as the border for this flower garden. Three lily pools are placed on the property.

NOT JUST WEDDING GIFTS, BUT

Ideal Wedding Gifts

No other occasion is comparable to the Wedding when it comes to particularness concerning the Gift. For, to be successful and truly appreciated, it must never be "just another gift"—It is imperative, instead, that it be an Ideal Wedding Gift; chosen not for the occasion alone, but with years to come in mind. Such distinguished Gifts for Weddings are a tradition here at LaBelles, and you'll find them awaiting you in Silver, Crystal, China, and Fine Linen.

La Belles
137 W. MAPLE

Birmingham's Shop of Gifts, Books and Stationery

Kay Baum
99 W. MAPLE BIRMINGHAM



with the whole Summer Ahead

JULY CLEARANCE

Savings up to **1/2** off

on a Special Group of Dresses... Sportswear



I dreamed I went shopping at Kay Baum's in my

maidenform bra

"Asleep...but it all seemed so real. So many fabulous fashions...so many dreamy accessories! And all eyes were on my figure...so beautifully molded in my Maidenform bra."

Maybe you've dreamed of a dream of a bra like Maidenform. Come see our vast collection of Maidenform bras and choose the style that gives you the lift, the lines you love.

Shown: Maidenform's Allstate™ in white rayon satin. Just one dream bra from our vast collection of styles and fabrics. There is a Maidenform for Every Type of Figure.

Kay Baum
99 W. MAPLE BIRMINGHAM

THREE LEVEL PILE

In an All-Wool Wilton— at a Price to Thrill the Thrifty

Siboney by **BIGELOW**

Mere words can't describe SIBONEY'S beauty or its luxurious "feel." The three levels of loop pile are manipulated so that the swirl scroll stands out magnificently. You must see it, though, to appreciate how well SIBONEY will suit your decorating plans!

\$10.95 Sq. Yd.

Harold B. Brown
CARPETS and RUGS

Between 11 and 12 Mile Roads
LI 2-9695
JO 4-6373

Open Mon., Thurs. & Fri. Evenings to 9
Budget Terms Available
2863 Woodward

WE GIVE *S.N.* GREEN STAMPS