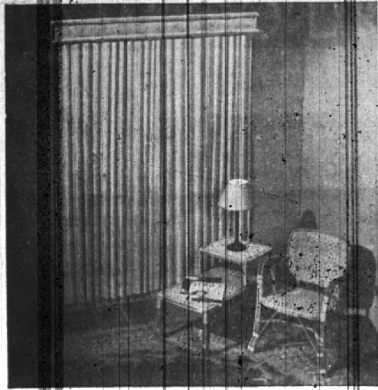


BAMBOO DRAPES



AVERAGE
WINDOWS

9⁷⁵ TO

15³⁰

per pair

(depending on size)

Fine Quality

PERFECT LIGHT CONTROL

Just the thing for sun protection

BEAUTIFUL — ECONOMICAL

PHONE LINCOLN 1-4934

BESSENGER'S

Est. 1927

23539 Woodward near 9 1/2 Mile Rd.

Pickup and Delivery



STATE PARKS BUSY

Michigan's three-acre parks, under the able management of our Conservation Department, are playing host to an all-time record number of visitors this year from just about every state in the union. More than thirteen million people may emerge from summer vacations in 1953, all with a good word to say for these parks.

While this writer is not entirely in sympathy with the idea that State Parks should be a responsibility of the Conservation Department, let us hasten to add that the administration of these important points of welcome to Michigan Outdoors has been admirable and able in every respect. Under the fine hand of Arthur G. Elmer, chief of Parks and Recreation, the personnel in charge conduct themselves nobly—and the job of handling such vast numbers of people requires a noble touch!

Facilities Broadened

Naturally the most popular parks are those located on or near water, and during the hot months of July and August great throngs of visitors single them out for attention. Swimming facilities at these parks have been fully developed in most cases, and great care is taken to make the bathing beaches safe for the entire family.

A former Birmingham resident, Mart Neff's "Michigan Outdoors" television show appears every Thursday at 10 p.m. over station WJW-TV.

Psychological Warfare Topic Of AF Meeting

The regular meeting of the 9066th Volunteer Air Reserve Training Unit will be held Monday, July 20, at 7:30 p.m., at St. James High school, Ferndale.

Lieutenant George R. Kroesine will lecture on Psychological Warfare and a plan for organizing flights will be discussed.

Captain Lee Kenney, commanding officer of the squadron, urges reservists to acquire Air Force credits early in the fiscal year by attending the meetings.

Fisher To Head 1,000 Volunteers In UF Drive Here

Appointment of Everell E. Fisher, president of North Chevrolet Company, as general campaign chairman for the 1953 Torch Drive in the Birmingham-Bloomfield-Franklin area was announced today by John P. St. Clair, advisory committee chairman.

Active in past UF campaigns in the area, Fisher this week launched the detailed organizational program which will draw together nearly 1,000 community leaders who will make up the major drive committees and business and residential solicitation teams. The campaign will run from October 29 to November 12.

With the tremendous growth of this area, and its constantly increasing needs, our Torch Drive in Birmingham-Bloomfield-Franklin becomes a more important community effort each year," Fisher declared. "Unusually strong public spirit has convincingly met each higher level of need, and it is very gratifying to see how readily the large numbers of volunteers are



JOHN P. ST. CLAIR
EVERELL E. FISHER
United Foundation committee heads begin work.
(Eccentric Staff Photo)

Fisher To Head 1,000 Volunteers In UF Drive Here

responding to the development of the 1953 program."

FISHER SAID several preliminary meetings are scheduled, with committee formation expected to be completed in the next six weeks. "Anyone who is interested in participating actively in the drive and sharing in the responsibility and pleasure of this outstanding civic project, is urged to get in touch with campaign headquarters at 219 1/2 Briggs Building," Fisher said.

Fisher, whose residence is on Lone Pine Road, Bloomfield Township, has lived in the area for the past 13 years and has been in the automobile business since graduating from Georgetown in 1928. He has three children: Everell, Jr., 11; Peter, 10; and Susan, 8.

Mrs. J. Rowland Quinn is campaign director for the fifth year.

NACA Director Is Re-Elected

Kenneth F. Hardy, 412 S. Glenhurst, has been re-elected a director of the Detroit chapter of the National Association of Cost Accountants. In this capacity he will have charge of the annual program of the Detroit chapter.

Hardy has been with General Motors since 1935, and at the present time is the director of the procedures and methods section of the controller's staff in Detroit.

He is a graduate of New York University and a former director of the Newark Chapter of the National Association of Cost Accountants.

Birm. Post Downs Bloomfield Hills

The Charles Edwards Post American Legion nine opened the second half of the league season Sunday, July 12, with a 4-1 victory over Bloomfield Hills.

Dick Sheldon chalked up the win with 14 strikeouts.

Jerry Wedge's bat was the big one if this game as he puffed out a triple and two singles in five times at bat.

Marty Goldman was the losing pitcher, allowing Birmingham 10 hits. Chuck Dunkel counted two hits for Bloomfield.



Go GREYHOUND

★ Enjoy relaxed travel! Greyhound coaches are pleasantly ventilated. Dependable service. Frequent schedules. And don't forget, there are no lower fares!

BIRMINGHAM to:

Ludington	\$6.20
Sault Ste. Marie	9.80
Traverse City	6.90
Beacon Harbor	5.10
Alpena	6.15

391 So. Woodward MI 4-4313



It May Cost Less than the Car You Own!

Surprised by the statement above? Then listen, for a moment, to these amazing facts:

The beautiful motorcar pictured here is actually priced *lower* than twenty-two different models of other motorcars built and sold in America.

Its gasoline economy is so extraordinary that it will travel farther on a gallon of gasoline than many cars of far less stature and size.

Its dependability is so great that, over a normal span of ownership, it will probably cost as little to operate and maintain as any car you could buy. The records of

certain fleet operators have indicated this.

And authoritative records reveal that this Cadillac may be expected to return a *greater* percentage of its owner's investment, at the time of resale, than any other motorcar built in America.

Perhaps by now your *surprise* has changed to *concern*.

For if you happen to own one of the twenty-two cars priced higher than this magnificent Cadillac—or if you own one of the many, many other cars which are very *close* in price—then you've been needlessly depriving yourself of some of the greatest

satisfactions in all the world of motordom.

You've been depriving yourself of Cadillac's brilliant performance... its superlative handling ease... its marvelous riding comfort... its great and inspiring beauty... and the deep and abiding pride which comes with ownership of so beloved and respected a possession.

You'll surely agree—that's a lot of things to miss... especially when it costs no more to have them.

If you think this message might be addressed to you—come in and see us. You've *already* waited too long!

WILSON PONTIAC-CADILLAC, INC.

275 North Woodward Avenue

Phone Midwest 4-1930 or JORDAN 4-8655

For Your Fishing Fun



TRUE TEMPER
CASTING RODS \$7.95 up

Spinning Rod & Reel \$18.95
with 100 yd. line

BOAT ROD HOLDER \$1.00

LANDING NETS \$2.00 up

MINNOW PAIL \$1.60

Boat Lanterns \$5.85 Boat Cushions \$4.95 Life Preservers \$4.45

Remington—Winchester—Browning GUNS

BASEBALLS \$1.00

TENNIS BALLS . 3 for \$2.10

BASEBALL CAPS \$1.25
RED, BLUE, GREEN

ARCHERY TARGETS \$8.95

ARROWS 40c ea. 3 for \$1.10

Thompin QUIVVER \$6.00

Spaulding—Wilson GOLF Equipment

SAVE A LIFE
Mobile Blood Bank
July 22nd
Community House
2-8 P.M.
Free Baby Sitting Provided
For Appointment Call
MI 4-6406 or MI 4-6616

the
McBRIDE HARDWARE
COMPANY
BIRMINGHAM'S LARGEST HARDWARE
WE DELIVER
154 S. Woodward Midwest 4-3010
OPEN 8:00 to 5:30 — FRIDAY TILL 9 — CLOSED WED. p.m.