

Detroit Builder Cites City Staff For Fine Service

Birmingham city commissioners have received a letter from Edward Rose and Sons, building contractors, expressing thanks for the cooperation the company has received from city officials.

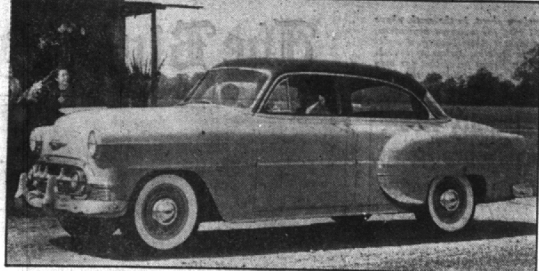
his company had built more than 100 homes in Birmingham. He added that many times they have wanted to express their thanks for city cooperation, but had waited until their building project was finished to avoid any hint of "flattery motives."

The letter says, in part: "... AMONG other things, you have the most modern and sensible building code in the Metropolitan Detroit area, and you have never attempted to enforce anything that was illegal or in the least arbitrary. Your example is

a beacon for all municipalities to follow.

"We should particularly like to express our thanks to those of your officials with whom we have had contact—Miss Irene Hanley, Donald Egbert, L. R. Gars, J. V. Walker and Elmer Haack. They are, collectively, the nicest and best set of municipal officials that we know. You should be very proud of them."

Commissioners were quick to welcome this type of letter, because comparatively few such are received. "But you ought to see our stack of gripes," one commissioner commented.



The low, sweeping lines of the 1953 Chevrolets are exemplified by this four-door sedan in the "Two-Ten" series, which this year offers increased performance, comfort and convenience in addition to a complete re-design. Apparent in this view are the enlarged front and rear vision, new fender and hood contours and a fresh grille treatment. Four-door sedans are also available in the "One-Fifty" and the new Bel Air series. The new 1953 Chevrolet models will go on display Friday, Jan. 9, in the dealerships across the nation, including the Birmingham agency, North Chevrolet Co., 1006 S. Woodward.

DOWN TO EARTH Bloomfield Home Has Many New Plant Ideas

By Alice Wassels Burlingame
Special Writer For The Birmingham Eccentric

After the holiday season many of our living rooms look rather bare and welcome the softness that houseplants will give to the overall decorative lines.

"The other day it was my privilege to meet a real indoor gardener in our area and I'd like you to share my friendship with her.

Mrs. Lew Betterly lives at 4040 Overlea, Bloomfield Hills, off Telegraph road, about a mile north of Maple and Telegraph, on the crest of a hill at Gilbert Lake.

The Betterly home has an "organic design" as fulfilled by a local architect. The home was designed for the family, the site and easy maintenance.

As you approach the door off the circular driveway, you are at once captivated by the pie-shaped flower bed to the right.

It has a south-west exposure and outside has at least a 25 foot carpet roof beyond the exterior wall to protect it.

The exotic flower bed is flush with the room floor. A phone call to the architect answered our question: "What is under the flower bed?"

"Only sand was drained in texture. A rat wall of carefully designed sturdy wire discourages rodents from calling. This grade of sturdy wire is attached to the exterior wall and is firmly attached to all sides of the surface flower bed, way below the surface of the soil."

clers, listen to this... the African violets have huge leaves and flowers, and have been blooming for months, at floor level (in the usual strata) placed directly into the garden bed. This is against all previous systems I have ever heard of, but you haven't met Mrs. "Greenthumb" Betterly.

Look a little further in this doorway garden and see healthy clematis varieties, azaleas, crotons, while ivy tumbles over the boundary construction. A large fern is in the apex of the garden to give a pleasing vertical accent. Impatiens are blooming abundantly. One-half of the soil mixture is peat and the other half is a mixture of sand and good garden soil.

While the leafkettle was heating, the 15 by 3 feet bay window overlooking Gilbert Lake was examined. Dividing the high windows of the bay, about nine feet above the floor, is a shelf for plants. There we saw squaricus spengeri tumbling down to form a silhouette against the sky with its lacy fine leaves. Also on this shelf the spider plant sent its "infant growth" down in feathery, grape ivy, and large leaf begonias gave interest to the "upper garden" on the afore mentioned shelf.



Mrs. Burlingame

COME YOU African violet fan-

ALONG This entire bay window garden, which is also on the floor level, very unusual plants are grown. Large cut leaf plumbago gives a tropical atmosphere.

Tangerine seeds, soaked for a few hours before planting are now an interesting plant nine feet tall. This is an idea for young mothers who want to begin an interest in plants for the small fry.

Azaleas have been blooming and Mrs. Betterly feeds them ammonium sulfate twice a year.

An attractive log was brought in and has a healthy plant setting on it.

Impatiens are growing in this garden, assuring a constant color in the flowers. A couple of mallows have been giving hooded flowers.

The lemon tree has already paid its rent for the year with a large lemon for the gardener.

As this is on the east side, Mrs. Betterly has found it best to keep all plants in their own pots. This allows for shifting position as they come into maximum effect with fruit and flowers. Also a constant eastern exposure can be very hot.

THE FIDDLE LEAF fig with its smooth texture lends a contrast to the other plants. Also there is an orange tree, lots of geraniums in bloom. These are placed in a central grouping, which has more "umph" than as though they were scattered in the flower bed.

Plumbago is in full bloom which is unusual for indoor plants.

The border along the window side of the indoor flower bed has a border of parsley. Nice texture, good to eat, too.

Shamrocks, carnations in pots and nasturtiums which have been in bloom, comprise the total of the

TYPEWRITERS
ADDING MACHINES
REPAIRED
New and Rebuilt Typewriters
For Sale—Rentals
Birmingham Printing
309 EAST MAPLE • MI 4-4740

SPEEDWAY FUEL OIL
No. 1 Oil - 14.6c per gal.
No. 2 Oil - 13.6c per gal.
Prompt Metered Delivery Service
Protective Contracts
Call Woodward 2-2700

SPEEDWAY PETROLEUM CORPORATION
301 So. Fort St.
Detroit 25, Michigan

"Personality" GLASSES
Eye Examinations
Glasses Fitted
WE OFFER FRAMES THAT FLATTER FACIAL FEATURES
Norman R. Becker, O.D.
And Staff
MI 4-0644
Formerly associated with Square Deal Miller, Detroit, in Optical Dept. as Manager and Optometrist.
Complete Lens Grinding Shop on our premises

To Cross Well Site
Birmingham city commissioners have granted an easement across the Lincoln Well site to the Detroit Edison company, subject to reversion on 30 days notice from the city. The proposed line will supply power for a street light on West Lincoln, opposite the Larches intersection.

SHOE CLEARANCE

up to **1/2** off and more

Over 3,000 Pairs Nationally Advertised
This Season's Styles From Regular Stocks

- | | |
|--------------|----------|
| PEACOCK | TWEEDIE |
| RICE O'NEILL | VITALITY |
| CARMELETES | GLAMOUR |

Were \$10.95 to \$24.95
\$6.85 \$8.85 \$10.85
\$12.85

- Calfskin
- Black
- Brown
- Suedes
- Red
- Green
- Reptiles
- Blue
- Gray

Choose from all the wanted colors and materials. High... medium... or low heels. Dress shoes... wedges... flats... casuals. Sizes 3 to 10; AAAAA to Bs in the group but not in every style.

Sorry... No Phone or Mail Orders

200 HANDBAGS
20% OFF

Herbert Burr
Shoe Salon
255 N. Woodward, Birmingham

SEMI-ANNUAL CLOTHING

Sale

SUITS AND OUTERCOATS
HART SCHAFFNER & MARX

Values to \$70 Values to \$80 Values to \$90
NOW \$58.75 NOW \$68.75 NOW \$76.75

Our first-of-the-year clearance of suits, top coats and overcoats, tailored by those famous makers, Hart Schaffner & Marx, bring you savings of substantial nature.

The clothing in this event includes some of the finest fabrics available... the styles available are in single and double-breasted suits in the new American silhouette model and overcoats in drape swagger and modified box models.

Dickinson's
BIRMINGHAM WABEEK BUILDING
PONTIAC SAGINAW AT LAWRENCE

YEAR END Clearance SALE
• SNOW SUITS • PRAM SUITS
• COAT and LEGGING SETS
• DRESSES • SWEATERS
• SLEEPERS
As well as other odd lots of Merchandise reduced to clear
LITTLE FOLKS SHOP
175 West Maple Birmingham
Open Friday Evening Until Nine

Begin the New Year with these—
1953 DRUG SPECIALS

<p>Revlon AQUAMARINE • LOTION • SOAP Both for \$1.00</p> <p>Woodbury Lanolin Rich HAND CREAM 1/2 Price Sale \$1.00 Size ONLY 50c</p> <p>Pepsodent AMMONIATED TOOTH POWDER 47c Size & 27c Size Both Only 47c</p> <p>BURMA-SHAVE 2-25c Tubes 50c Value ONLY 29c</p> <p>Noxema SKIN CREAM 85c Jar 59c</p> <p>Lady Blair Milk Chocolate Covered Cherries 75c Box NOW 49c</p> <p>Bonnie Bell PLUS "30" Hormone Cream \$5.00 Jar For \$2.50</p>	<p>Large Size Jergens Lotion With Dispenser Both for 98c</p> <p>Harriett Hubbard Ayres LUXURIA Cleansing Cream \$2.50 Size \$1.25</p> <p>Silver Star BLADES 25c Pack of 5 98c Dispenser of 20 \$1.25 Value 98c</p> <p>Palmolive After Shave Lotion Reg. 29c</p> <p>Colgate, Giant 53c Size Shaving Cream Both for 53c</p> <p>Woodbury Cocoanut Oil Castile SHAMPOO \$1.00 Size ONLY 50c</p>	<p>Mennen 59c bottle of SKIN BRACER & tube of Mennen SHAVE CREAM Both for 59c</p> <p>Halo SHAMPOO Reg. \$1.14 Value 2 Lg. Bottles 69c</p> <p>Prep \$1.10 Giant Size BRUSHLESS SHAVE CREAM 89c</p> <p>TWOSOME! Finesse SHAMPOO Reg. 60c</p> <p>Stopette DEODORANT Reg. 60c Both for \$1.00</p>
--	---	---

Gillette Bonus Special
20 Gillette Blue Blades in dispenser
35c Tube of Gillette Lather
Reg. \$1.33 Value Both for 98c

Woodbury
Beauty Blendell
LOTION
\$1.00 Size FOR 50c

WESLEY DRUGS
Open Daily 9:30 a.m. to 10:30 p.m.
100 W. 14 Mile Rd. (Cor. of Pierce)
We Pick Up and Deliver All Prescriptions
PHONE MI 4-7563