

Enters Officer School At Fort Benning

Eugene Carl Haase, son of Mr. and Mrs. Carl F. Haase, 18484 Devonshire, reported to Fort Benning, Ga., to attend Army Officer's Candidate School after spending two weeks at the home of his parents.

Haase, who recently completed a course in Leadership school at Ft. Breckinridge, graduated from Baldwin High school and attended Highland Park Junior College before entering service.

Want ads cannot be accepted after 5 p.m. each Tuesday.

Southfield Bonds Still Up For Sale

Sale of \$47,000 in Southfield township water revenue bonds was further delayed Tuesday night when township board members voted to take under advisement a proposal of the Kenower-MacArthur & Co., bond buyers.

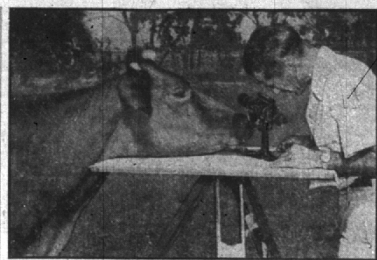
A representative of the firm told the board that the present bond market is nearly flooded and that the township would either have to revamp its present bonding ordi-

nance or face the payment of a high interest rate.

THE FIRM offered to take the townships' bonds at 4 1/2 percent interest but submitted an alternate proposal to handle all the Southfield's bond sales and study and revise the water bond ordinance.

Board members decided to study both proposals and hold a special meeting later to determine a course of action.

To buy or sell a used automobile, read and use Eccentric Classified Ads.



COW-CULATING COW—Miranda, Red Bluff, Calif., cow, offers her mathematical services to a Department of Interior surveyor. He is busy checking figures and plans to bring irrigation water to 205,000 arid acres south of Red Bluff. As Miranda will be using some of that water, she is exercising special interest in his instruments and board. "Looks like a funny way to bring water down there by making marks on this here board." The surveyor is too busy to explain.

WANT TO BUY . . . SELL . . . RENT? NEED DOMESTIC HELP? Then Try An ECCENTRIC CLASSIFIED AD

REAL ESTATE FOR SALE

HOUSE OF 1000 sq. ft. on 1/2 acre. Call for details.

2-1/2 story brick home on Pleasant Street. Call for details.

4-1/2 story brick home on 1/2 acre. Call for details.

3-1/2 story brick home on 1/2 acre. Call for details.

2-1/2 story brick home on 1/2 acre. Call for details.

3-1/2 story brick home on 1/2 acre. Call for details.

4-1/2 story brick home on 1/2 acre. Call for details.

5-1/2 story brick home on 1/2 acre. Call for details.

6-1/2 story brick home on 1/2 acre. Call for details.

7-1/2 story brick home on 1/2 acre. Call for details.

8-1/2 story brick home on 1/2 acre. Call for details.

9-1/2 story brick home on 1/2 acre. Call for details.

10-1/2 story brick home on 1/2 acre. Call for details.

DOMESTIC EMPLOYMENT

2-1/2 Domestic Helpers. Call for details.

3-1/2 Domestic Helpers. Call for details.

4-1/2 Domestic Helpers. Call for details.

5-1/2 Domestic Helpers. Call for details.

6-1/2 Domestic Helpers. Call for details.

7-1/2 Domestic Helpers. Call for details.

8-1/2 Domestic Helpers. Call for details.

9-1/2 Domestic Helpers. Call for details.

10-1/2 Domestic Helpers. Call for details.



THEY COST LITTLE—DO MUCH!
Just Telephone Midwest 4-1100

LOOK 'EM OVER

SEE OUR STANLEY TOOL PLAN SETS

Latest issue of illustrated books filled with designs and hints to help you in your workshop. Including "How to use Carpenter Tools", "How to Make Toys", "Early American Designs", "Stanley Tool Guide", "How to Work with Tools and Woods", etc.

25¢ to \$2.00

SPECIALS

1st rate Stanley tools in stock sets from \$7.95.

SNOW SHOVELS Pushers \$1.85 Aluminum \$2.75 Ice Picks \$1.35

WORK BENCHES (kd) \$13.95 Boy's Size (just like Dad's) \$6.75

Plankweld (pre-finished) See our display

Knotty Cedar Paneling 6", 10", 12" 18 1/2¢ Square Foot

MAHOGANY PANELING 37 1/2¢ Square Foot

FRESH UP WITH PAINT

CLEAR & WHITE **FIRZITE SATINLAC**

THE SATIN OF ALL VARNISHES

Perma Cedar Shavings for kennel bedding. 75¢ per bag

SPECIAL

Combination Storm Doors, Bronze Screen . . . white pine. Comb. Storm Windows and reg. storm windows.

2-6 by 6-8 \$15.50

CUPBOARD DOOR HARDWARE

RESTRICTION 2-WAY BUILDING PLAN

1. Restriction's 'HOUSE DOCTOR' will help you plan to build it yourself.

2. A Restriction Selected Contractor will build to your specifications.

FREE ESTIMATES—Attic Rooms and Recreation Rooms

Just Dial

Midwest 4-5537

OUR POLICY . . .

To give you, the customer, courteous, friendly and prompt service whatever your needs may be. Just tell us what you want, we have it for you. Step in and visit us soon, it's your yard.

425 ETON RD-BIRMINGHAM

RESTRICTION

Open Weekdays 8-5 1884 LUMBER COMPANY 1953 Open Saturday 8-3

City Officials Send A Welcome To All Newcomers

By ALICE E. MORGAN

Every new family in Birmingham, or any other community, faces the two-fold job of getting acquainted. Meeting new neighbors is something that "happens," but getting acquainted with the city is another matter.

You may not know the name of the family next door, but you must know to which school your children are to go, where to pay water bills, light and heating bills, the location of various city and public buildings—and know them right away.

There are certain city services, garbage, water, rubbish, fire and police protection, which the average family coming here from another community must learn immediately.

To start out on a "cook's Tour" is one way to do it. An easier way, and far more friendly, however, has been inaugurated by Birmingham's official family.

Shortly after arriving in Birmingham now, each new family receives a letter from Mayor Jean Beier. It is accompanied by a map of the city and a selection of pamphlets designed to acquaint them with their new home town quickly and easily.

THE MAYOR'S letter extends an official welcome to the newcomer and briefly explains some of the city services. Greater details of these services are explained in the pamphlets which accompany the letter.

BOWLING SCORES

HOLY NAME MENS

Name	Won	Lost
Mike Welch Inc.	24	24
Standard Oil	24	49
St. Louis	24	54
Guardian Oil	24	62
Johnson Pike & Hie.	24	62
14 Mile Inn	24	65
Johnson Service	24	67
Keith's Barber Shop	24	67
Johnson Service	24	67
Summer Buik	24	76
Fisher's Market	24	86

HOLY NAME LADIES

Name	Won	Lost
Birm. Modern	24	24
St. Mary's	24	32
St. Mary's	24	34
Kay Hamm	24	36
Birm. Comm. M.	24	39
St. Mary's	24	39
Uptown Service	24	46

OAKLAND COUNTY COMM. LEAGUE

Name	Won	Lost
Willing Industries	24	24
Hillwood Recreation	24	27
Merola Manor	24	32
Coca Cola	24	32
St. B. Dupont No. 1	24	32
Furney Drug Stores	24	32
Chas. Brown	24	32
Precision Products	24	35
St. B. Dupont No. 2	24	37
Dix's Air Cooled Engines	24	37
A. J. Freeman Co.	24	37
Roller Tool Co.	24	38
Wham Tamers	24	44
Ind. B. Dupont No. 1	24	57
Ind. B. Dupont No. 2	24	57
Treasurer—234 A. Yarnum—234 Ind. High	24	57
183 Team High 17, G. B. Dupont No. 1—222 Team High 24, Team High 11, Mezala Manor—2515 Coca Cola—2447	24	57

LADIES ALBI LEAGUE

Name	Won	Lost
B. W. Controller	40	24
Wesley Way	40	32
Salem Eng.	40	35
Delta Pharmacy	40	36
Kate Platt	40	36
Adam Electric	40	36
Star Jeweler	40	36
Edna Jeweler	40	36
Paul Power	40	40
World's Best	40	40
Weekly High 104 (1) A. McDonald—234 Team High 11, G. B. Dupont—222 Team High 11, Mezala Manor—2515 Coca Cola—2447	40	40

News copy submitted early necessarily is given preference over late items. So the "Early Bird" usually gets the space.

IT COMES OUT THERE?

Doubling two-year-old Pacifian Patrick. Comic wonders about the big blast he hears from the tube. Part of the 123-piece U. S. Army band, the horn was played in a concert given in Paris. Little Pat was part of the audience. Was, that is, till overcome by curiosity about the horn and the big noise.

SPECIAL "GET ACQUAINTED" OFFER

Clip This Money Saving Coupon!

BIG BEAR

Buy of the Week!

CLIP THIS COUPON — SIGN YOUR NAME AND ADDRESS — JOIN IN THIS BIG BEAR SAVING!

GOOD ONLY AT THE MARKETS LISTED BELOW

YOUR CHOICE

SPRY or **CRISCO**

3 LB. CAN 69¢

This coupon worth 20¢ when you purchase a 3-lb. can of Spry or Crisco. Without coupon, 3-lb. can, 89¢. Coupon good only Jan. 29, 30, 31.

NAME _____

ADDRESS _____

CHECK THESE OTHER BIG BEAR VALUES

HILLS BROS. COFFEE 79¢

1-LB. VAC. CAN

PURE GRANULATED SUGAR 5-Lb. Bag 47¢

MIRACLE WHIP Qt. 47¢

STARBUCK OF CHICKEN OF THE SEA TUNA 6 1/2-Oz. Can 29¢

DOLE PINEAPPLE JUICE 46-Oz. Can 29¢

HUNT'S YELLOW CLING PEACHES Large No. 23 Can 25¢

EVEREST GRAPE JAM 12-Oz. Jar 19¢

BEEF ROAST 53¢

BEST CHUCK CUTS

STEAKS Tender-Sure, U. S. Graded Prime and Choice, Round, Sirloin or Swiss—Lb. 83¢

PORK ROAST Butt. No Waste, Easy to Slice—Lb. 49¢

BEEF STEW Tender-Sure, U. S. Graded Choice, Lean and Boneless—Lb. 75¢

POTATOES 10 59¢

U. S. No. 1 MAINE WHITE

ALL-PURPOSE 10 LBS.

DRISCOLL BRAND FRESH FROZEN SLICED STRAWBERRIES

12-Oz. Pkg. 35¢

3 Pkgs. \$1.00

EGGS 57¢

BLUE RIBBON FARMS ALL WHITE

LARGE, GRADE A DOZEN IN CARTON

KRAFT'S TASTY, ECONOMICAL VELVEETA

CHEESE FOOD 2 Lb. Loaf 89¢

Prices & Coupon | 1855 WOODWARD BIRMINGHAM
Good ONLY At | 23245 MACK AVE. ST. CLAIR SHORES
Prices Effective Jan. 29 - 30 - 31 — We Reserve the Right to Limit Quantities

Use the Eccentric Want Ads