

News copy submitted early necessarily is given preference over late items. So the "Early Bird" usually gets the space.

### Edison Office. Here Celebrates Firm's 50th Year

Mayor Dean G. Beier and City Manager Donald C. Egbert will be present to help the Birmingham office of the Detroit Edison company celebrate the firm's 50th anniversary on Friday afternoon, Jan. 16.

Claude Morrow, manager of the Birmingham office at 220 East Merrill, will officiate at the cake cutting ceremonies at 1 p. m., but coffee and cake will be served to visitors from 9 a. m. until 5 p. m.

Opening the anniversary observance will be a half hour television program Thursday night over WJL-TV at 8:30 p. m. The theme of the program will be the history and the future of the firm.

In 1903 Detroit Edison began serving 6,000 customers in a community of about 300,000. Now its meters number a million and it serves nearly 3 1/2 million people. In 1903, less than 200 persons worked for the company. Now it employs nearly 12,000.

Locally, St. Clair Edison gained a Birmingham franchise on July 21, 1908, to serve about 200 customers in an area with less than 2,000 persons. Birmingham was then less than one square mile. Today, there are more than 15,000 customers being served in the 30-square mile Birmingham area.

### Y Juniors Drop Second Game of Season, 35-27

Birmingham YMCA Junior Boys' basketball team dropped its second game of the season to the Fisher Y, 35-27.

Birmingham trailed throughout and lacked depth in combating the onslaughts of fast-breaking Fisher quintet.

The visitors led 8 to 6 at the quarter and 16 to 12 at the half. Diminutive Fisher forward Charles Ambo led the scoring with 12 points. Greg Davis and Jim May tossed in 17 points for the locals. Dick Kyrke and Dick Lewis shone on defense for Birmingham.

Saturday, Northern Y Junior Boys play the local Y on the floor of the First Baptist church gym.

**PECK'S**  
Cash and Carry  
Plain Dresses, \$139  
Suits, Topcoats  
CLEANED and PRESSED  
Free Delivery  
Service PHONE MI 4-7724  
WOODWARD—NEAR MAPLE

**Insurance makes jewelry FUN!**

**POLICY**

### Christmas Brought You Jewels and Furs

... and the worry of loss that goes with them.

Have more fun wearing them ON ALL OCCASIONS by letting us assume that worry for you.

Get these precious possessions covered by a floater policy today. Tomorrow may be too late.

**BERESFORD-THOMPSON**  
General Insurance  
"We Insure Everything. But Yesterday."  
EDWIN M. BERESFORD  
OTIS C. THOMPSON  
LOUIS HASCALL  
178 North Woodward Avenue  
BIRMINGHAM Ph. MI 4-6330

### High Pile and LOW PILE CREATE A CARVED EFFECT



### in BIGELOW'S Chansonette

A dramatic scroll winds its way in this carpet, looking for all the world like a hand-carved design. Think thick plant yarns—a new blend of wool and special carpet rayon fibers—for the depth of the pile, skillful weaving for the interesting gradations. All together it spells beauty for your floors.

Moreover CHANSONETTE goes to the head of the class for its top future—its long-wearing quality. Come in and see this masterpiece—come in and make the major purchase for your home!

This is all perfect merchandise. Originally made to sell for \$9.95 sq. yd.

Green & Beige 12' Wide **Now \$675** Sq. Yd.

### Harold B. Brown CARPETS and RUGS

Between 11 and 12 Mile Roads Open Every Night  
LO 2-9595 Budget Terms Saturday 'Til 5:30  
JI 4-6373 Available 2863 Woodward



MISS LINDO MOORE, Baldwin public library staff worker, and Mrs. John G. Shinnick, Friends of the Library representative, inspect night by the Friends of the Library at the building's 25th birthday celebration. The reader will enable the library to film some of its back issues of magazines to save the space previously used for the magazines. (Eccentric Staff Photo)

### BOWLING SCORES

**OAKLAND COUNTY COMMUNITY**

Name	Won	Lost
Willie Ind.	46	19
Hilwood Rec.	40	24
Megalo Manor	37	27
Coza Co's	36	28
Porter Drugs	36	28
G. R. Dupont No. 1	35	29
Precision Prod.	32 1/2	31 1/2
Clayton Rec.	32	32
Dick's Air Cooled Eng.	32	32
G. R. Dupont No. 2	31 1/2	32 1/2
J. A. Friedman	31 1/2	32 1/2
Fuller Tool Co.	28	42
B'ham Comm. 3	28	42
G. E. Dupont No. 3	28	42
Ind. High (1) - W. Bidlaw 234 R.		
Treasler 234 Ind. High (3), E. Carlson		
495, H. Anderson, 272 Team High		
11, G. R. Dupont, 923 B'ham Comm.		
495 Team High (1), Meado 495, 1516 Coza Co's, 2447.		

**HOLY NAME MEN'S STANDINGS**

Name	Won	Lost
Mike Welch	24 1/2	7 1/2
Standard Oil	24	45
Guardian Oil	21	51
Otto's Drugs	17 1/2	51 1/2
14 Mile Inn	14	54
Johnston Pipe & Htz.	14	56
Auto Parts	13	59
Kerby's Barber Shop	13	61
Forbes Service	12	62
Summer Buick	12	70
Fisher's Sporting	12	70
Fisher's Market	11	82

**HOLY NAME WOMEN'S STANDINGS**

Name	Won	Lost
Birmingham Movers	17	17
Olson's Mat.	15	24
Navy Bann	15	29
Murphy's Service	14	31
North Chevrolet	13	32
Kingsley Inn	13	33
B'ham Comm. Mat.	12	34
Uptown Service	12	39

**Ladies Alibi League**

Name	Won	Lost
Tom & Country	35	29
12 Hi Bar	35	29
W. W. Controller	34 1/2	31 1/2
Murray Way	33	31
Otto's Pharmacy	33	31
Auto Parts	32	31
Ed's Eng.	31	32
B'ham Eccentric	31	33
Tom's Pharmacy	30	33 1/2
Axler Jewelry	28	37
Triangle Farm	27	34
Gordon's Carriage	26	36
Early High Ind. (1), M. Pernack		
212 Ind. (2), M. Pernack, 234 Team		
H/W Controller—298, 318 Team (1)		
Season High Ind. (1), M. Lockey—214		
Ind. (1), D. Hunter—215 Team (1), Triangle Farm—781, Team (3) Otto Pharmacy—2148.		

### New Books at the Baldwin Library

- FICTION**  
BROWN—Space On My Hands  
PHILOSOPHY—PSYCHOLOGY  
FOSDICK—Within Our Power  
**SOCIAL SCIENCE**  
ELLSBERG—Passport for Jennifer  
TAYLOR—Are Workers Human?  
LASSER—Your Income Tax for 1952 Returns  
**TROELSTRUP**—Consumer Problems  
MORSE—Life in Crime  
LOVEJOY—College Guide  
WATKINS—Working Your Way through College  
**SCIENCE—GIFT ARTS**  
MARSHALL—Sun, Moon and Planets  
STANWELL-FLETCHER—Tundra World  
**PALSTRANT**—Car Owner's Fix-It Guide  
JILL—Successful Poultry Management  
**PALSTRANT**—Tailoring—40 Dress-making Made Easy  
**HANDICRAFT—FINK ARTS**  
AMERICAN PUBLIC HEALTH ASSOCIATION—Panama in the Neighborhood  
WILLIAMS—New Homes for Today  
**LITERATURE**  
JEFFARES—W. B. Yeats: Man and Description—TRAVEL—HISTORY—  
**BIOGRAPHY**  
HAISEY—Folks at Home  
MELVIN—After the White House  
GERARD—Autobiography of a Hunted Man  
RANDALL—Lincoln the President: Midstream  
WEYLAND—Recalled to Service  
PONSOMBY—Recollections of Three Years  
**JUVENILE**  
GIRL SCOUTS OF AMERICA—Scout Girl Scouting

### Methodist Women Plan First January Meetings

Two groups from the First Methodist church will hold a joint meeting Tuesday, Jan. 20, at the home Mrs. Hugh Hemphill, 32400 Mayfair lane, at 8 p. m. Hostesses who will serve from the Wesleyan and Ruth Allen units will include Mesdames Wayne Beitel, Rodney Peterson, J. P. Steven-

### Winter to See Commercial Use Of Will-O-Way

Something new has been added to the Will-O-Way Summer Playhouse on West Long Lake Road—namely heat. A winter season of use was thus launched by Ken Turner, manager, and William Merrill, director of Bloomfield Hills' popular playhouse.

Heretofore, the apple storage house (which was converted into a summer theater 13 years ago) has been dark during the winter months, but with the addition of a heating unit it has housed several important meetings with a theatrical touch that are reaching all corners of the country.

Latest example is the Servel Company, which cast a live show from Detroit talent, rehearsed it at Will-O-Way which built the sets for the traveling roadshow, and transported the whole show to Chicago where it had its premiere before wholesaling distributors of Servel's air conditioning units.

WRITTEN and produced through Servel's advertising agency by Dean Coffin, responsibility for stage direction and properties was assigned to William Merrill.

The cast for the Servel show represented talent familiar to the play-going summer patrons—including such actors and actresses as Robert Bryson, Gerald M. Harrington, Barney O'Rourke, Winifred Coffin, Margaret Crosby, and Frederick Morris.

Ken Turner, manager of Will-O-Way, announced that several commercial shows would be using Will-O-Way facilities for rehearsal before launching nation-wide tours. Whether this activity eventually will lead to a winter season of stock was something on which Turner would not commit himself at the present time.

It is just a system, he said, by which the theatrical helplessness of the theater can be made available to business and industry throughout the year.

### WANT TO BUY... SELL... RENT? NEED DOMESTIC HELP? Then Try An ECCENTRIC CLASSIFIED AD

**REAL ESTATE FOR SALE**  
HOUSE for sale on West Long Lake Road, 2 1/2 miles from Detroit, Michigan. Call Ken Turner, 234 West Long Lake Road, Detroit, Michigan 48207.  
2700 Family Home in Pleasant Grove, Canton, Penn. Call Ken Turner, 234 West Long Lake Road, Detroit, Michigan 48207.  
2000 Family Home in Pleasant Grove, Canton, Penn. Call Ken Turner, 234 West Long Lake Road, Detroit, Michigan 48207.

**DOMESTIC EMPLOYMENT**  
234—Domestic Agencies  
235—Domestic Agencies  
236—Domestic Agencies  
237—Domestic Agencies  
238—Domestic Agencies  
239—Domestic Agencies  
240—Domestic Agencies  
241—Domestic Agencies  
242—Domestic Agencies  
243—Domestic Agencies  
244—Domestic Agencies  
245—Domestic Agencies  
246—Domestic Agencies  
247—Domestic Agencies  
248—Domestic Agencies  
249—Domestic Agencies  
250—Domestic Agencies

**HOUSEWORKER**  
234—Domestic Agencies  
235—Domestic Agencies  
236—Domestic Agencies  
237—Domestic Agencies  
238—Domestic Agencies  
239—Domestic Agencies  
240—Domestic Agencies  
241—Domestic Agencies  
242—Domestic Agencies  
243—Domestic Agencies  
244—Domestic Agencies  
245—Domestic Agencies  
246—Domestic Agencies  
247—Domestic Agencies  
248—Domestic Agencies  
249—Domestic Agencies  
250—Domestic Agencies

THEY COST LITTLE—DO MUCH!  
Just Telephone Midwest 4-1100

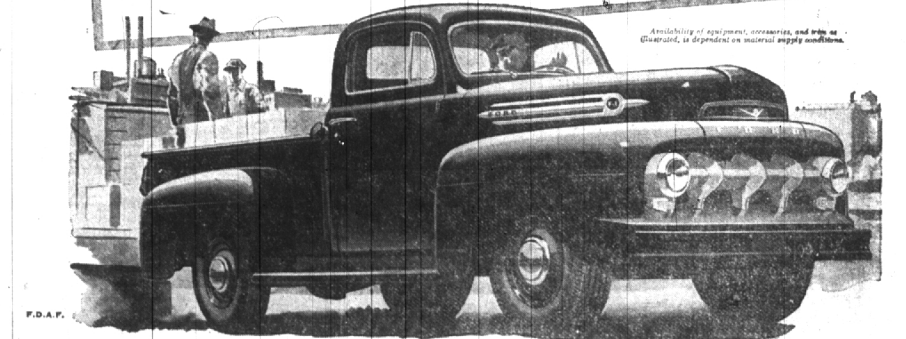


**FORD TRUCKS RUN FOR PENNIES!**  
In the big Economy Run, 3 out of 4 Ford F-6's run for less than 4¢ a mile! (Cost of gas, oil, service—not including fixed expenses such as depreciation, taxes, etc.)

**We're trading high, wide and handsome on any size Ford Truck you want!**

If you do business with your Ford Dealer right away—you may discover that your old truck is worth from \$25 to \$200 MORE than you think! Don't delay. "Later" may be too late!

Get a new Ford Truck now. Full range, from Pickups to 22,000 lb. G.V.W. BIG JOBS! And the day you buy is just the START of your savings with a thrifty Ford Truck!



**FORD TRUCKS LAST LONGER!** Using latest registration data on 8,059,000 trucks, life insurance experts prove Ford Trucks last longer!

Come in today—MAKE THE "STEAL" OF A LIFETIME!  
**HAROLD TURNER, Inc.**  
Turn to Turner—Your Friendly Ford Dealer  
464 SO. WOODWARD AVENUE  
PHONES MIDWEST 4-7500 or JORDAN 4-6266