

NEED SOMETHING FOR YOUR HOUSE? Then locate it by reading or using the Classified Ads in The Eccentric each week.

Water Department Chores Are Varied

The Birmingham water department's job is truly an eight-hour-a-day, five day-a-week business. Besides reading some 3,000 water meters each month for billing purposes, water department employees are called upon to install repair and maintain all meters, make periodic surveys of the city's water system, test all meters in the city every seven years and make leak surveys.

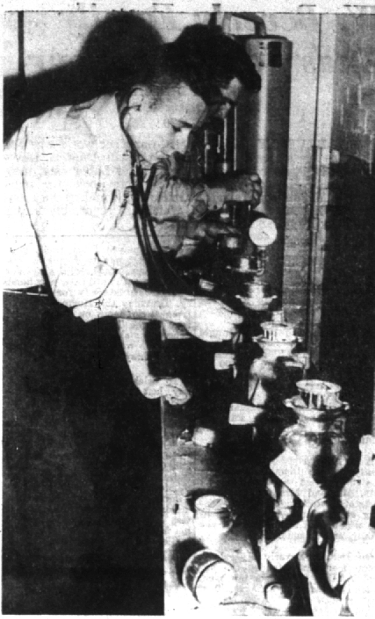
Now under the department's care are over 6,700 accounts. Department meters register between 36 and 73 million gallons of water a month, depending on the season of the year.

Four men do all the aforementioned work. They are Ralph Hemmerly, department head; Jack Fawcett, Harry Streibig and Elton Finley. The men were recently made more identifiable by the addition of blue-grey uniforms.

The first consideration of the department, naturally, is meter reading, which takes employees about 10 days each month to prepare the quarterly billings.

IN ADDITION to this, the department handles about 175 service calls each month. These include special readings and turning off and on services. Installation of new meters ranges between 30 and 35 each month. Employees also test on an average of 100 meters a month, in the city-wide meter testing program that is repeated every seven years. Trouble calls account for a great deal of employees' time.

If you, a water user, are enraged by the amount of your latest water bill (and this, fortunately, is not too often, according to department workers) and call in the



HARRY STREIBIG ELTON FINLEY
Meters are given a series of pressure tests.

department to check that beat-up old meter that is flinging away your money in over-charges, the department's first action will check your home for possible water leaks. Leaking toilet bowls are most often the offenders, water employees state. Other common leaks are also found in the home and quickly rectified. "Rarely is the meter at fault," Hemmerly said.

Here the meter is checked on a pressure hookup and if found to be inaccurate, it is torn down and worn parts replaced for its return to service. Meters seem to be rugged individuals and have little machinery that can be worn to the point of ineffective operation. The leak surveys are more difficult. When loss of water is traced to a particular neighborhood the water department and the department of public works go in hand by hand.

With a variety of sensitive equipment to detect leaks which

include a geophone, stethoscope and electronic leak indicator, the water boys go first to the fire hydrant. Worn piping at a hydrant very often spells the loss of thousands of gallons of water in a day.

IF THE HYDRANT is found to be in good shape the lines to the individual homes or businesses are followed until the leak is found and corrected by the DFW.

The leak survey has decreased the city's water loss from 12,000,000 to 5,000,000 gallons a month.

Some 125 leaks are detected by the department each year. Two wishes that the department would like to get across to Birmingham residents include keeping the water meter accessible to meter readers and knowing where the shutoff valve is located.

A serious hindrance to meter readers is a cluttered basement where its anybody's guess just where the meter is and then takes a leap frog action to read the meter once it's found.

Equally as important is the knowledge of where the shutoff valve is in case of emergency. Employees state that in nearly every instance the valve is within two feet of the meter and resembles an ordinary round tap handle that can be turned clockwise to stop the flow of water into the house.

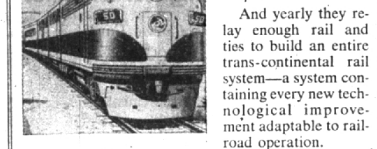


JACK FAWCETT RALPH HEMMERLY
Book work takes many man-hours. (Eccentric Staff Photos)

Your Indispensable Servant

Six or seventimes a day a new unit is added to the American railroads' locomotive fleet.

And every six minutes, (as in October) of every hour of the 24 in the day the railroads put a new freight car to work on their tracks.



And yearly they relay enough rail and ties to build an entire trans-continental rail system—a system containing every new technological improvement adaptable to railroad operation.

So that they can continue to be the one and only form of transportation in America that can and does haul anything, for anybody, in any quantity, anywhere, in any season of the year.

The railroads are America's—and your—most nearly indispensable economic servant.

MICHIGAN RAILROADS ASSOCIATION

LET DRIVE-RITE Teach You TO DRIVE RIGHT DRIVE-RITE Auto Driving School Woodward 1-3100

WANT RESULTS

Bring your car to us for a complete check-up. We'll find the problems before they start. We'll fix them right. We'll save you money. We'll give you peace of mind.

the ideal gift... that will be appreciated

A Lindsay Automatic Water Softener in its cheery Christmas gift wrap is a gift that will bring joy to your family on Christmas day and every day for years to come, and think of it... it will save you money too!

What a superb gift. You know what? You can't lose! Get in touch with us today.

LINDSAY automatic water softeners

RITE-WAY SOFTENER SERVICE

BIRMINGHAM MidWest 1-5200

393 E. Maple
NO MONEY DOWN THREE YEARS TO PAY

OPEN FRIDAY EVENINGS UNTIL 9:00
"THE BEST WAY IS RITE-WAY"

DISPLAY - CLASSIFIED DIRECTORY OF SERVICES

OPEN EVENINGS 'TIL 9 TELEVISION SERVICE

Car Radio Specialists
MI 4-8705

Trained technicians assure you of satisfactory service... uninterrupted TV viewing.

ELECTRONIC SERVICE CO.

580 S. Woodward Open 8 a.m. to 9 p.m., Sat. to 6

FIRE EXTINGUISHER RECHARGING

FREE PICKUP AND DELIVERY Phone MI 4-2255
CRAIG APPLIANCES, INC. 112 S. WOODWARD

POTTER Moving & Storage Co.

136 Brownell Phone MI 4-4612

no. 1 specialist in local moving!

agent for **ALLIED VAN LINES, Inc.**

No. 1 on U. S. Highway—No. 1 in Service—No. 1 in Your Community

BIRMINGHAM BLUE PRINT AND SUPPLY CO.

W. S. McAlpine, Pres. Chas. G. Anderson, Mgr.

- Blue Prints • Water Prints
- Photostats • Transparents

QUICK SERVICE while you wait—or pickup & delivery Ph. MI 4-3738

Located in Birmingham Opposite W. 4th & S. Woodward Open Weekdays & Saturday A. M. WE AIM TO PLEASE Operator of 20 Years Experience

SCREENS and STORM SASH FLUSH DOORS

- Customized Doors • Windows
- Cupboard Doors and Drawers
- Plywood • Fiberglass Laminar

WOODCRAFT CO. 1184 Grant MI 4-0424

TYPEWRITERS ADDING MACHINES REPAIRED

New and Rebuilt Typewriters For Sale—Rebuilt

Birmingham Printing 369 EAST MAPLE • MI 4-4740

BIRMINGHAM FRUIT CO.

124 Midwest N. Woodward 4-1030

ALL KINDS OF DELICACIES for Your Holiday Entertaining

FRUIT BASKETS MADE TO ORDER

Be Sure It's **Firestone** Town and Country

SNOW TIRES For Winter DRIVING

BOB ADAMS SHELL SERVICE

Hunter at Maple MI 1-9750

ARTHRITIS?

Try new Alpha Tablets. They contain alpha plus the best known pain relieving ingredients. 100 Alpha Tablets \$2.00 at your drugstore or call KE 3-4119.

PECK'S Cash and Carry \$150

Plain Dresses, Suits, Topcoats

CLEANED and PRESSED For Delivery PHONE MI 4-7724 Service WOODWARD—NEAR MAPLE

A HEARING AID Is A Fine CHRISTMAS GIFT For A Parent

S. J. Hawden, 968 Purdy Phone MI 4-1395

Birmingham LOCKSMITH Service

Midwest 4-7939 DAY AND NIGHT CITY-WIDE SERVICE Auto-Home-Office-Luggage 256 S. Woodward

HEARING AIDS and BATTERIES for ALL MAKES

Make Inquiry at Our Store and Get All of the Details MI 4-2121

SHAIN'S DRUG STORE 105 W. Maple

You Are Cordially Invited to Inspect **OUR MODERN STORAGE**

Built Especially to Store Household Goods

LOCAL AND LONG DISTANCE MOVING

Gauker Storage Co. 9 Orchard Lake Ave., Pontiac, Mich. Dial "O" ask for Enterprise 6305

'Tis The Season!

For Large Tree Planting, Removals and Power Sawing (Diseases Diagnosed)

Phone LI 2-8132 Days or Evenings Trim in the Dormant Season

JOHONNOT TREE SERVICE Degree in Forestry, M. S. C.

Thatcher Patterson & Wernet

Oakland County's Oldest Insurance Agency 609 Community Nat'l Bank Bldg. Pontiac FR 2-9224

STERNA'S for WHIRLPOOL WASHERS AND DRYERS

FREE CUSTOMER PARKING In Rear of Store Open Friday evening to 9:00

HENRY M. HENDERSON CUSTOM HOME BUILDER AND REMODELING 1351 WARWICK DETROIT 23 Phones VE 61847 or VE 61833

GLENN WING POWER TOOLS

- Atlas • Delta
- Porter-Cable
- Shopsmith
- DeWalt Saws

1437 SOUTH WOODWARD Five Blocks North of 14-Mile Rd. BIRMINGHAM, MI 4-0444 Daily 8 to 6:00—Fri. 8 to 8:00

Lawrence E. Smith Landscape Design and Construction 135 N. WOODWARD in the Wilson Building Phone MI 4-2036

STRIPED HORSE? NO!

THERE IS NO QUESTION— when it comes to our reliability and efficiency in planning and constructing your new home to meet your individual requirements. Call us today.

HENRY M. HENDERSON CUSTOM HOME BUILDER AND REMODELING 1351 WARWICK DETROIT 23 Phones VE 61847 or VE 61833

GLENN WING POWER TOOLS

- Atlas • Delta
- Porter-Cable
- Shopsmith
- DeWalt Saws

1437 SOUTH WOODWARD Five Blocks North of 14-Mile Rd. BIRMINGHAM, MI 4-0444 Daily 8 to 6:00—Fri. 8 to 8:00

Do You Have A **BED-WETTING PROBLEM?**

We have the cure for this!

SHAIN'S REXALL DRUG STORE 105 W. Maple MI 4-2121

TIME TO PLAN YOUR WEST INDIES CRUISE

Over 100 Cruises, From 8 to 28 Days, \$145 to \$785 and up

For details ask your **BIRMINGHAM TRAVEL SERVICE** MI 4-5711 379 Hamilton

ADVERTISEMENT

Looking for Something?

Illustration of a man looking at a book.

MEN'S CLOTHING

Illustration of a man in a suit.

FOR HOME OR BUSINESS NEEDS LOOK IN THE **'YELLOW PAGES'** OF YOUR TELEPHONE DIRECTORY