

### Study

(Continued from Page One)  
no further connections be made to the Cranbrook sewer and no sewers be constructed in new unplatted land.

THE CITY meanwhile will discontinue all contracts for sewer treatment in the area tributary to the Bloomfield drain as of January 1, 1954. No charge will be made for the treatment of the city attempts to escape any responsibility for pollution stemming from the township area.

City Engineer L. R. Gare told construction of the new sewer would be prohibitively expensive, but conceded that the results might bear up the costs.

City Engineer L. R. Gare told commissioners that it would take him two weeks to come up with the figures.

### Court of Honor Set For Troop B-3

Thursday, Dec. 17, is the night for Boy Scout Troop B-3 as Scouts will observe their Court of Honor ceremonies.

Merit badges and recognition will be awarded those Scouts and Explorers who have passed the required tests in Scouting advancement this season.

The winner has already been selected and will be announced at the ceremony.

### Opening

(Continued from Page One)

aided by the county for at least six months.

It probably will take that long to complete an "origin and destination" report recently taken in the Detroit metropolitan area of traffic—where it starts from and where it ends.

This half-million dollar survey, started last May, is being conducted by Detroit and U. S. Bureau of public roads.

Figures contained in this report may to a considerable extent influence the final decision on what will be done about further development and improvement of 14 Mile road.

THIS IS THE text of the letter the 14 Mile Committee sent the state, and the county road and plan commission:

"At the Birmingham commission meeting of Aug. 17, 1953, a resolution was passed requesting that the Oakland county road commission acquire the last remaining right-of-way for 14 Mile road from the Birmingham Country Club.

The purpose of this request was to secure the necessary land for the creation of a through east to west traffic artery.

"Our committee was formed to oppose this resolution for the following reasons:

"1) The excessive cost of developing such a highway due to the following:

"(a) Bridge or bridges over the River Rouge;

"(b) Condemnation of property from the Birmingham Country Club;

"(c) NECESSITY of paving and improving over 50 per cent of the mileage involved;

"(d) The creation of a dangerous highway through a highly populated area with elementary schools bordering the proposed route;

"(e) The lack of a requirement for a through highway within two miles of the present, recently improved 12 Mile road, from four miles south of 12 Mile to the 8 Mile superhighway; and

"(f) Our opinion that the 14 Mile road proposal is not based on a sound traffic requirement, but that this proposal is the desire of a minority group whose interests are local and pecuniary for business and professional reasons.

"2) DEPRECIATION of high-valued residential property!

"In view of the above, our committee recommends that if a traffic problem exists, that you take under consideration the following proposal:

"That a bypass route be established so that through traffic could be directed west to east on Maple road to Lahser, north on Lahser to Quanton road (1.4 Mile), across Woodward to Big Beaver road. This route would only require three miles of paving, and would result in a much lower cost to the county.

"Our aim is to oppose this Birmingham plan with the utmost vigor. We are planning mass meetings, letter-writing campaigns, and have asked the Birmingham Country Club to take a firm stand with us in our opposition.

"We trust that you will make a fair and just decision in this matter.

(Signed) John E. Lane  
T. M. Emery  
Robert L. Neff  
Jerry Landquist

THE PRINTED letterhead also mentions that Thomas Kavavach is the committee's legal counsel, and lists these area representatives:

From West Beverly—Chester F. Guilmet, F. E. McCleary, Bradley Stephenson and L. A. Edrington; From Beverly-Golfhurst—Fred C. Coate and F. W. Donaldson; From Birchwood—Neil Spicer and R. H. Champion; From Royal Oak—W. B. Peterson, Tom Harold, R. O. Peters, Ed Haskin and John Gaster; From Franklin Village—David L. Cooke.

Also at its meeting, the Birmingham Hills Assn. re-elected Charles S. Kinnison as president, William Wilson, vice president, and Don Lightner, secretary.

J. E. Lane was elected treasurer, and two new directors, R. L. Neff and Harry Gross, took office.

### Parking

(Continued from Page One)

to go into the area proposed by Weeks-Jacobson," he explained. "Our concern is to its initial size, whether it should be a burden on the taxpayers or financed by private capital, and who shall operate it—the city or private firms."

Monday night will be Devlin's second appearance before the city commission.

FIVE OR six years ago he spoke to commissioners in connection with the then-proposed "Hogan plan" which outlined an off-street parking program for the four quadrants of the business section.

That plan was dropped by the commission as being too expensive for the city to finance, plus lack of apparent community interest in going ahead with it.

At that time, Devlin pointed out the desirability of having several smaller lots in contrast to one large one, and indicated that at that time no private company would be interested in financing such facilities because of the low economic return.

Collision in France Injures Pastor's Son

An Air Force dispatch disclosed last week that AIC Donald Runkel, son of the Rev. Arnold F. Runkel, pastor of the First Methodist Church, was among the injured in an auto crash near Fontainebleau, France.

Runkel, whose parents live at 652 Madison, was one of three airmen who received minor injuries in the crash that took the life of S. Sgt. Richard M. Calmer, Hartsville, Ohio, according to the dispatch.

delicacies for your



# Christmas table

Genuine Spring LEG O' LAMB 59<sup>c</sup> lb.

CHICKEN PARTS BREASTS 99<sup>c</sup> lb. LEGS 79<sup>c</sup> lb. WINGS 29<sup>c</sup> lb.

PAN READY—FRESHLY DRESSED FRYING CHICKENS . . . . 49<sup>c</sup> lb.

RIB END PORK LOIN ROAST . . . 35<sup>c</sup> lb.

FRESH PORK TENDERLOIN 98<sup>c</sup> lb.

Special of the Week  
TANGY & DELICIOUS—18 MO. AGED NEW YORK CHEESE 89<sup>c</sup> lb.  
PHILADELPHIA CREAM CHEESE 3 oz. pkgs. 2 for 25<sup>c</sup>  
SWANSON'S BUTTER ONE POUND PRINT 69<sup>c</sup> lb.

FRESH GROUND BEEF 35<sup>c</sup> lb. 3 lbs. \$1.00

DUBUQUE CANNED HAMS 9 lbs. EACH \$7.99

NATURALLY AGED—BLADE CUT POT ROAST of BEEF 39<sup>c</sup> lb.

WHOLE LAMB FOR YOUR FREEZER 49<sup>c</sup> lb.

BONELESS, NATURALLY AGED BEEF ROUND STEAK 89<sup>c</sup> lb.

DEL MONTE Crosse & Blackwell PUMPKIN PLUM PUDDING 2 CANS 29<sup>c</sup> 49<sup>c</sup> ea.

MILLER'S LITTLE RED HEN CHICKEN PIES MADE FROM YOUNG FARM FRESH CHICKENS



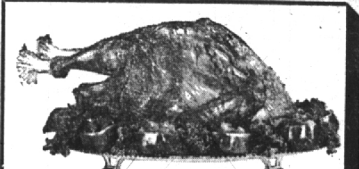
BEST BY ANY TEST DELICIOUSLY DIFFERENT A Real \$1.00 Meal . . . 2 For 89<sup>c</sup>

AWREY BAKERY Dutch Chocolate Chip Cookies . . . . 59c per dozen Whipped Cream Lemon Chiffon Pies . . . . 85c each Raspberry Filled Danish Horn Sweet Rolls . . . 6 for 58c Fresh Fruit Banana Cream Bar Cakes . . . . 78c each Chocolate Crunch Fudge Cup Cakes . . . . 6 for 47c All Butter Danish Pecan Coffee Cakes . . . . 80c each Extra Tender Tasted Glazed Donuts . . . . 6 for 37c SPECIALTY BREAD—A DIFFERENT VARIETY EVERY DAY Cinnamon Sugar Donuts . . . . 55c per dozen (FRIDAY & SATURDAY ONLY) Apricot Glaze Small Layer Cakes . . . . 75c each (FRIDAY & SATURDAY ONLY) Butter Frosted Chocolate Sponge 3 Layer Cakes . . . . 68c per half \$1.35 each

IDEAL DOG FOOD Case \$7.25

PILLSBURY or GOLD MEDAL FLOUR 5 lb. Bag 47c

FULL CASE TEMPLE ORANGES . . . . \$2.89 WHITE GRAPEFRUIT 10 for 69c JUICE ORANGES 3 doz. \$1.00



If you want to serve The FINEST . . . MAKE SURE YOUR HOLIDAY DINNER MENUS INCLUDE A FRESHLY DRESSED CHARLEVOIX, MICHIGAN TURKEY YOUR FAMILY AND YOUR GUESTS WILL RECOGNIZE THE FINER TASTE.

Boneless BEEF For Stew 69<sup>c</sup> lb. CUDAHY BACON LB. LAYER 69<sup>c</sup>

A LARGE SELECTION OF FRESH FISH AT OUR SERVICE COUNTER CLEANED AT YOUR REQUEST

Hills Brothers COFFEE 79<sup>c</sup> lb.

Thank You—Spiced CRABAPPLES jar 39<sup>c</sup>

Dole Sliced No. 2 1/2 Cans PINEAPPLE 2 for 75<sup>c</sup>

Smuckers Gift Boxes of PRESERVES

BIRDS EYE ORANGE JUICE 6 oz. Cans—2 for 39c FRENCH FRIES 9 oz. Pkgs.—2 for 37c SPINACH 2 for 37c PEAS & CARROTS 2 Pkgs. 37c PEAS 10 oz. Pkgs. 3 for 50c

MIRACLE WHIP QUART SALAD DRESSING 49<sup>c</sup>

PREMIER NO. 2 1/2 CAN Bartlett Pears 2 for 85<sup>c</sup>

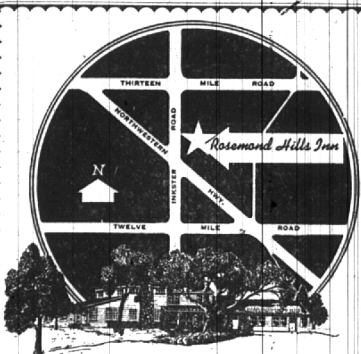
Squire's

SNOW CROP PEAS 2 Pkgs. 37c ORANGE JUICE 2 for 45c SPINACH 2 pkgs. 43c

## RENT A NEW CAR

Aladdin Drivurself System Inc.

887 N. Woodward Midwest 6-4411



Rosemond Hills Inn Luncheons, dinners, banquets, receptions, cocktail bar and lounge all at your service. For reservations call MAYfair 6-3563. Open seven days a week. 30230 Inkster Rd., between 12 and 13 N. of Northwestern

## OPEN EVE'S TILL CHRISTMAS GIFTS and TOYS

ONLY 13 Shopping Days TILL XMAS

An Early Visit to Our Hobby Craft and Toy Department Will Be a Pleasure—You'll Be Thrilled With Ideas



TRAYS • PICTURES • TILES • PLASTER BOXES FIGURINES • METALCRAFT • TOOLING • GLASS & METAL ETCHING KITS • TOLE WARE • PASTEL OIL and WATER COLOR SETS • WOOL FLOCKING and MANY USEFUL CRAFT and ARTIST SUPPLIES

Gifts May Be Set Aside Till Xmas

Michigan's Finest Wallpaper Selections OPEN MEN'S NIGHT W. 12 Mile Rd. Just east of Post Office, Berkley CUSTOM MIXED PAINTS as you like Open 9-5 daily Except Friday 9-4 Phone LI 1-5070