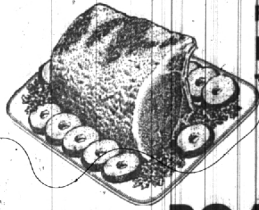


PEABODY'S SUPER MARKET

154 HUNTER at MAPLE MI 4-5222

Open every evening except Saturday
Sunday Hours: 10 a.m. to 8 p.m.

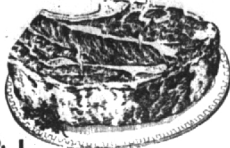
Free Parking, Front and Rear of Store
WE DELIVER



Order Your Christmas Turkey Now!

Fresh 'n Tender
PORK LOIN ROAST 39¢ lb.

PRIME BEEF POT

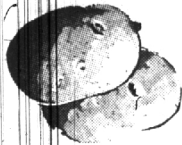


ROAST 49¢ lb.

FARM FRESH
FRYERS 49¢ lb.

SMALL, LEAN
SPARE RIBS 49¢ lb.

Vegetables



No. 1, Green Farm
MAINE POTATOES
10 Pound Bag 39¢

PARSNIPS FRESH Pound Bag 17¢

Michigan Cooking **ONIONS** 4 lbs. 19¢

EVERY ITEM VALUE PACKED
ALL FOOD TOP QUALITY

| | |
|---|-------------------|
| CHUNK TUNA chicken of the Sea | 31c |
| TOMATOES, Premier Hand Packed | No. 2 Can 19c |
| SUGAR PEAS, Del Monte | 303 Can 18c |
| TOMATO JUICE, Campbell's | 46 oz. Can 27c |
| PEACHES, Premier Old Fashion Free Stone | No. 2 1/2 Can 39c |
| APPLE SAUCE, Mott's 15 oz. Jar | 2 for 31c |
| TOMATO SOUP, Campbell's | 10c |
| MIRACLE WHIP | Quart 59c |
| PEANUT BUTTER, Oz. | 12 oz. Jar 33c |
| STRAWBERRY PRESERVE, Aunt Jane's | 2 lbs. 52c |

| | | |
|---------------------------------------|-----------------------------|----------------------------|
| GOLD MEDAL FLOUR 5 lbs. 49¢ | CRISCO 3 lbs. 79¢ | SUGAR 5 lbs. 49¢ |
|---------------------------------------|-----------------------------|----------------------------|

• TIDE • CHEER • OXYDOL • IVORY FLAKES
27¢

ARMOUR CLOVERBLOOM
BUTTER 69¢ lb.

GET YOUR PEABODY
THRIFTY STAMPS
Redeemable in Merchandise or Premiums

PEABODY'S

Parking Lot OK'd For Chesterfield, Maple Corner

An off-street parking lot for 61 cars behind the business block at Chesterfield and W. Maple was made possible Monday night when city commissioners rezoned two lots to a parking district from its former classification of single family.

Opposed by nearby residents and favored by business tenants, the commission pointed out that the lot should relieve the parking problem in front of the stores.

Commissioner Lance Minor brought out that parking along Maple at this point will be reduced about 50 per cent when W. Maple is widened in 1955.

CITY ORDINANCE requires all parking districts to be heavily screened from adjoining residential areas, have setbacks from the sidewalk and side and rear yards be properly lighted, surfaced and maintained.

Entrances and exits from the parking lot are to be determined by the police department and building inspector.

It is expected that construction of parking facilities will get underway immediately.

Post Office Opens Special Holiday Mailing Service

The Birmingham post office this week announced special mailing hours for the Christmas season.

Beginning Dec. 9, the office will remain open from 9 a.m. to 8:30 p.m., until Dec. 21. Saturday hours will be from 8 a.m. to 6 p.m., with Sunday hours set at 10 a.m. to 4 p.m.

New international surface rates for first class mail became effective Nov. 1, for all foreign countries except Canada and Mexico. The rates are 8 cents for the first ounce, a fraction thereof and 4 cents for each additional ounce. Canadian and Mexican destinations still carry the 5 cent rate.

POST CARDS and postal cards in this class are 4 cents with Canadian and Mexican mailing remaining at 2 cents.

Unsealed, unsigned Christmas cards may be mailed anywhere at 2 cents each. It should be noted that this is classified as third class and cannot be forwarded without previous instruction of the addressee, except from one local address to another. If undelivered, these cannot be returned to the sender.

Regular first class rates of 3 cents permit any message the sender cares to write, a seal envelope, forwarding and return service.

Toastmasters Talk On Varied Topics

Walt Wakeman won the weekly Toastmasters trophy for his humorous treatment of the familiar proverb, "Everything comes to him who waits."

Rollin Gish introduced the evening's speakers. Robert Bunc spoke of safety first, a plea for observance of traffic laws for the preservation of the lives of children. Robert Haag made an interesting speech on the pros and cons of Compulsory Auto Insurance, legislation calling for all auto owners having bodily injury insurance. Don Fleischmann's speech, "Let's Set the Example," reminded parents of their obligation in setting safety habits by example.

Henry Morin spoke on the subject, "How to Avoid an Early Grave, or Coffin Nails Must Go," a humorous treatment of the evils of nicotine tar.

John Nell, club president, made the educational talk of the evening in his speech entitled "Public Speaking for Supervisors," dealing with use of public speaking abilities in conference leadership.

Ask Settlement Aid

Southfield Township Supervisor William Roeser Tuesday night was authorized by board members to employ necessary legal aid to start settlement proceedings with the newly-created City of Lathrup Village over township investments in the area.

THE NEW swing-needle (zig-zag) SINGER SEWING MACHINE

see it

- sew on buttons
- make buttonholes
- applique
- monogram
- overedge
- patch

All this and more without special attachments
Ask for Free Home Trial
SINGER SEWING CENTER
177 W. MAPLE
MI. 4-0050

Deny Enlargement Of Trailer Camp

Efforts of the Valley Gardens trailer camp, 2101 Telegraph, have a three to five acre parcel of land rezoned to extend the area of its trailer sites meeting opposition Tuesday night from Southfield township board members.

Board members explained that resident pressure against the township's enlarging the trailer camp forced them to take a stand against the rezoning from residential to industrial.

Philip Dexter, attorney for the owners of the property, hinted that court action would be pursued to gain the rezoning if township officials refused to approve his client's petition.

DEXTER STATED that the proposed enlargement would take place on the southern corner of the camp and that this property was bounded on one side by commercial, another side by industrial and the remaining two sides by a deep gulley, making the property unsuitable for residential purposes.

White explained that his client had invested in a \$20,000 sewage disposal plant which was built to handle wastes from not only the present camp but also the proposed addition.

Board members stood firm in their rejection of the proposal and added that the owner's investment in the disposal plant did not warrant the township's approval of a land use termed as not desirable.

The Birmingham Eccentric
Published every Thursday, at Birmingham, Mich., in the Evening
210-212 North Woodward Ave.
Telephone MI 4-1710
GEORGE R. AVERILL
Editor and Publisher

Entered as Second Class Matter in the U. S. Post Office at Birmingham, Michigan, under the Act of March 3, 1979.

SUBSCRIPTION RATES

| | |
|-------------------------|--------|
| One Year (12 Issues) | \$1.00 |
| Six Months (6 Issues) | .55 |
| Three Months (3 Issues) | .30 |
| Outside Oakland County | 1.25 |
| One Year (12 Issues) | \$1.50 |
| Six Months (6 Issues) | .80 |
| Three Months (3 Issues) | .45 |

FOR Christmas



Only \$150 Just A Week Down

THE WORLD'S FASTEST PORTABLE
Smith-Corona
BIRMINGHAM PRINTING
369 East Maple
MI 4-1710

Calico CORNERS
1640 S. TELEGRAPH RD.
BLOOMFIELD HILLS, MICH.
BOX 85 PERMANENT 2-9163
ONE DAY 610-530 SUNDAY 478-1113

2 1/2 Miles North of Devoe Collier
"SECONDS"
23 WONDERFUL COLORS
Self patterned cotton fabric
Perfect for slipcovers and drapery
48" wide \$1.50 yd.
Buy YARDS for the price of a YARD

Fox and Hounds Inn
John Ingleson, proprietor
Woodward at Long Lake Road, Bloomfield Hills
Serving Dinners and Luncheons
Sunday 1:30 p.m. to 9:00 p.m.
Monday through Saturday 6 to 11 p.m.
COCKTAILS SELECTED FOODS
Phone MI 4-4800 for Reservations

Get up a party... Bring the family!
LET'S GO BOWLING

Yes, bowling's fun for everybody—young and old—at a cost anybody can afford.

We have all the equipment you'll need, plus a clean and wholesome environment. We'll help you improve your score, too!

So phone us now for a reservation. Plenty of open time on week-ends, especially, and we'll save a spot for you if you'll let us know in advance.

COME ONE COME ALL
Bowling Movies
Instructive — Entertaining
Saturday, December 19th, 12 O'Clock Noon

BLOOMFIELD LANES
Woodward at Long Lake Rd.
Bloomfield Hills, Michigan Midwest 4-5125

Beautifying Christmas Gifts For Her

Sure to please is a gift that aids her in the year long activity of keeping herself at her very loveliest.

COLOGNES by

- Lucien Lelong
- Coty
- Yardley
- Old Spice

RONSON LIGHTERS

Revlon & Hudnut MANICURE KITS

PLASTIC COSMETIC KITS
with plastic jars and bottles for her favorite lotions and creams.

SHAN'S Rexall DRUGS
YOU CAN DEPEND ON ANY DRUG PRODUCT THAT BEARS THE NAME REXALL