

elm disease. The beetles that spread the infections, just like all other beetles, completely cease their activities when the first frost strikes."

We Heard It Said By:
WILLIAM LEBOLD, BIRMINGHAM.

HAM CITY FORESTER: "The approach of winter will give us a respite from the spread of Dutch

Walnut Lake Fire Station Delayed

Plans for the erection of a fire station at Walnut Lake hit a snag last week as the West Bloomfield township board rejected bids for construction of the project.

Hiland M. Thatcher, township supervisor, said that the board rejected the bids at its Tuesday night meeting because they were too high. "Many of them exceeded our approved appropriation for the project by more than \$5,000," he said.

He added that the township will re-advertise for bids in the near future.

THE STATION is slated to be built at Putnam and Deering, Walnut Lake, and will be a one-story structure. It will house the Walnut Lake volunteer company's single fire truck, a combination pumper and ladder truck carrying 1,000 feet of hose.

Clayton LaMotte, captain of the volunteer company, said that Walnut Lake has been trying to get a fire station for four years. Since it was purchased in June 1950 the company's truck and equipment has been stored in the garage of the Walnut Lake school.

Thatcher announced that the township will also build a fire station at Green Lake. Bids for this station will probably be received later this fall, he concluded.

Treasurer Touring

Bloomfield Township Treasurer September 7, Countries Mr. and Mrs. Hulet will visit will be England, France, Belgium, Switzerland, Italy and Spain.

Arno L. Hulet and his wife are enjoying a seven week tour of Europe and are expected to return



HONEYMOONING IN LAS VEGAS are Mr. and Mrs. Harold George Jacobsen of Hollywood, Calif. They were married August 20 in Las Vegas by the Rev. A. C. Melton of the Congregational church there. Harold is the son of Mr. and Mrs. George Jacobsen of Walnut Lake. Formerly Alletha Jean Owen, the bride is the daughter of Mr. and Mrs. Edmund Olsen of Detroit. She wore a white nylon ankle-length gown with Queen Anne collar. Her accessories included pearl choker and drop earrings, and she carried a white orchid corsage. The couple will live in Hollywood following their honeymoon.

Raw pineapple contains an enzyme which breaks down gelatin. Therefore, only cooked or canned pineapple should be used in making molded salads, explained Lucille Decker of Michigan State College's foods and nutrition department.

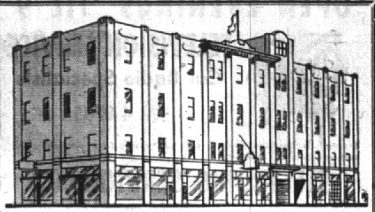
LEGAL NOTICES

HIGHLAND RECREATION AREA RULES AND REGULATIONS
The Conservation Commission, by authority of Act 17, P. A. 1951, as amended, hereby orders that for a period of ten years from October 1, 1953, it shall be unlawful to hunt, trap or fish in the following described area:

All the 20, Sec. 24 lying south of M-39 and that part of Sec. 25 lying north of Grubb Road, T 3 N, R 7 E, that part of Sec. 19 south of M-39 and old M-24, N 1/2 Sec. 19, and W 1/2, SW 1/4, Sec. 28, T 3 N, R 8 E; provided, however, that during any legal season it shall not be unlawful to fish in Betty Lake in Sec. 22, T 3 N, R 8 E, or to fish through the ice on Haven Hill Lake in Sec. 19, T 3 N, R 8 E.

PENALTY
Violation of the foregoing regulations shall be punishable by a fine of not more than \$100 and costs of prosecution, or by imprisonment in the county jail for not more than 90 days, or by both such fine and imprisonment in the discretion of the court.

By order of the Conservation Commission this 24th day of July, 1953.
GEORGE A. GRIFFITH
Chairman
GERALD E. EDDY
Director of Conservation



You Are Cordially Invited to Inspect
OUR MODERN STORAGE
Built Especially to Store Household Goods
LOCAL AND LONG DISTANCE MOVING
Gaukler Storage Co.
9 Orchard Lake Ave., Pontiac, Mich.
Dial "O" ask for Enterprise 6305.



LAY YOUR "SHOOTIN' IRON" away for the Hunting Season NOW!

\$5.00 Down will hold any gun of your choice 'til Oct. 15.
STOP IN AND SEE US TODAY
Neighborhood Hardware
HOURS: 9 a.m. to 8 p.m. — 'til 9 Fri. — Sun. 9 to 4
1228 SO. WOODWARD WE DELIVER MI 6-2588

It May Be Sunshiny NOW

BUT... the harsh and bitter weather of long winter months will shortly be here. Protect your home and you protect a big investment, the money saving way, with good paint. Prepare for the back-to-school exodus by getting supplies for inside painting.

SO PAINT-UP NOW! with **OUTSIDE WHITE** and all **TRIM COLORS**

- INSIDE PAINTS**
- Spred Satin • rubber base, all colors
 - Spred Gloss • all colors
 - Benjamin Moore • Wall Satin • rubber base paint
 - Low Lustre Enamel • companion color to Wall-Satin

BIRMINGHAM PAINT
Glass & Wallpaper Co.
335 E. Maple MI 4-3737

SUMMER STORE HOURS
Monday thru Friday 8:30 to 5:30; Saturday 8:30 to 5:00.

BIRMINGHAM FRUIT CO.
124 Midwest N. Woodward 4-4030
PREMIER COFFEE
89c lb.
FREE DELIVERY
Free Parking at Rear of Store



THE BIGGEST BARGAIN YOUR BUDGET CAN FIND!

TOP BARGAIN NOW!
You get today's Mercury with years-ahead looks in every line. And you get the best trade-in of the year on your old car, worth more right now than it will ever be again. For proof, see us. You can't beat a Mercury deal.

BIGGER BARGAIN LATER!
The same smart styling, the same advanced design that makes Mercury look so good right now means more trade-in value later. Independent market reports prove that Mercury tops its class for trade-in value.

Mercury sets new marks in production and sales — now offers you bigger selections, a better deal, and top trade-in value for the future!

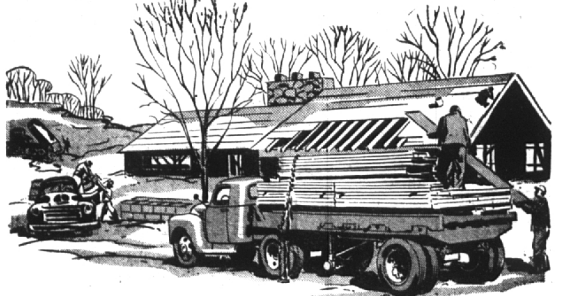
Figure it any way you want. Real car value begins and ends with smart style. That's why people buy Mercury new—and why more and more people want used Mercurys, too. And when you buy great style with still greater performance, it means you've got the car you want now, the car most used car buyers will go for later.

One look tells you why. Take a fresh long look at Mercury's lines. You'll see the smooth, crisp design that sets it apart from other cars.

Take a demonstration drive and you'll learn more. You'll learn about Mercury's proven V-8 engine, most advanced in Mercury's exclusively V-8 history. You'll learn about Mercury's optional power steering, power brakes, and 4-way power seat.

Get the story on the bargain! That old car of yours is probably worth far more than you figured. And Mercury's high future trade-in value brings your true car cost down even lower.

MOVE AHEAD WITH **MERCURY** GET MORE FOR YOUR MONEY



It Takes A HEAP OF HAULING ...to make a Home!

IF YOU'VE BUILT a new home recently—or are in the midst of doing so now—you know how dependent building is on motor transport.

From the moment the big excavating shovel arrives at the vacant lot astride a low-bed truck-trailer to dig the hole for your basement, it's a steady procession of trucks of one kind or another until the house is ready for occupancy.

Cement blocks, sand, steel, lumber, roofing, brick, plumbing, hardware, paint—everything that goes into the building of your home has to get to the site in motor trucks.

Then, when you arrive at the point where you're ready to move in, you call on motor transport again to transport your household furnishings for you.

If you've got it, a truck brought it!

Michigan Trucking Association
Hotel Fort Shelby • Detroit

TRUCKS ARE YOUR FRIENDS — Serving You NIGHT AND DAY!



TOM McDONNELL, INC.
AUTHORIZED LINCOLN MERCURY DEALER PHONE MI 4-1900 or JO 4-6179
850 SO. WOODWARD