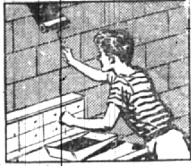
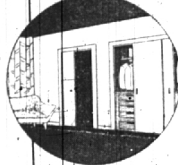


For All The "FIX-UP" Material for your home SHOP AT DAMMAN'S



Modernize your home
with Rolling Doors



Rolling Door Hardware

Takes but a few minutes to install the few simple parts.



A TYPICAL INSTALLATION

7 TYPES OF INSTALLATIONS AVAILABLE



Sliding Door Hardware For All Doors

A. L. DAMMAN HARDWARE CO.

4066 W. Maple at Telegraph Rd. MI. 6-0111

Free Parking Easy Terms — Open a Convenient Charge Account Delivery Free
Detroit Store, 9941 Hayes near Outer Drive LAkeview 7-9600

MOORES DUTCH BOY PAINTS

Over 1500 interior colors and over 120 exterior colors.

STEP LADDERS	
4 ft.	3.45
5 ft.	4.35
6 ft.	5.25

EXTRA HEAVY STEP LADDERS	
4 ft.	5.00
5 ft.	6.25
6 ft.	7.50
7 ft.	9.10

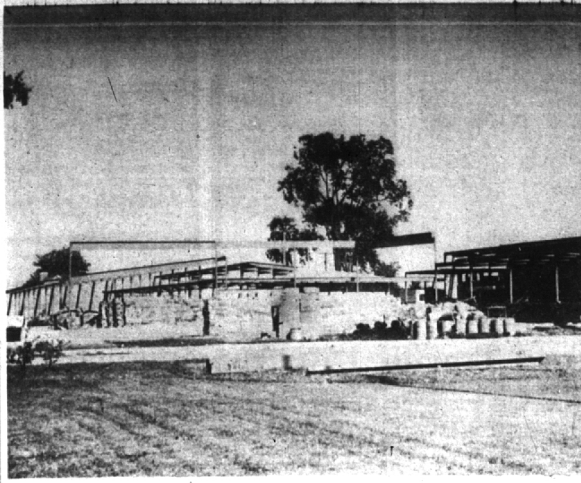
20 ft. extension ladders	16.00
21 ft. extension ladders	19.20
28 ft. extension ladders	22.40
32 ft. extension ladders	25.60

ALUMINUM EXTENSION LADDERS	ALUMINUM STEP LADDERS	
5 ft.	5 ft.	17.50
6 ft.	6 ft.	24.50
8 ft.	8 ft.	34.95
10 ft.	10 ft.	44.50

TOP YOUR SHOPPING LIST WITH... 2

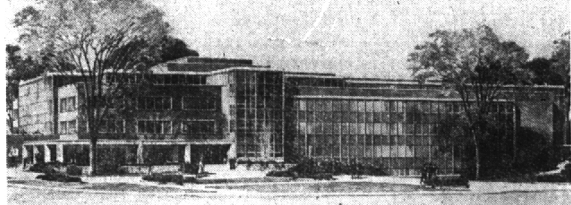


• Tough Film \$5.15
• Washable
• Quick Drying GALLON



WELL UNDERWAY construction-wise is the 11 classroom addition at Torry school. School board members hope that at least a portion of the addition can be completed and put into use yet this school year as the classroom shortage in the Birmingham school system grows more acute. The long wing will conform architecturally to the existing school building. Swanson Associates, Bloomfield Hills, are the architects. (Eccentric Staff Photo)

Michigan State to Build New Library



A new design in library construction, which permits thousands of students to be served at all times without standing in line at main desks, will be a feature of Michigan State College's new library building, shown in this architect's drawing. An initial appropriation of \$1 million has been earmarked for the library by the Michigan Legislature with construction to begin when the money is officially made available. The library will be the largest in America yet built on the "divisional reading room" principle, according to M.S.C. Librarian Jackson Towne. This means the breaking up

of the "conventional" library into large subject reading rooms with thousands of volumes on open shelves. Under this plan, 15,000 M.S.C. students can be served without the "bottleneck" problem in present library facilities. M.S.C.'s present library was built in 1925 when enrollment was 2,500. The new \$1 million building is to contain space for one million volumes, more than 100 faculty rooms for research, 200 cubicles for graduate students and a specially-equipped reading room for blind students. Containing four floors and a basement, the structure will be constructed of steel and concrete with a red brick veneer.

Fail To Delete Sidewalk Repair

The city commission Monday night denied a request of William W. Beyer, 2259 Avon Lane, to delete the sidewalk fronting four lots he owns from the city's sidewalk repair program.

Commissioner Dean G. Beier commented that it was the city's liability to maintain safe sidewalks once they have been constructed. Beyer maintained that few people used the walk and the cost would be out of line with the benefit the repaired walk would bring.

Adjust Assessments

To correct improper assessments in two special assessment districts, the city commission Monday night reduced the property share in special assessment district 386 by the amount of \$59.08 and reduced the property share of special assessment district 389 by \$28.24. In each instance the amounts should have originally been charged against the city.

Household goods of every description are offered for sale in the Classified Columns of The Birmingham Eccentric.

Buy 8,000 Gals. Gas
The Clark Oil company was the successful bidder for the sale of 8,000 gallons of gasoline to the City of Birmingham. City commissioners have approved their bid of \$1.092 and authorized delivery.

Village Nursery School

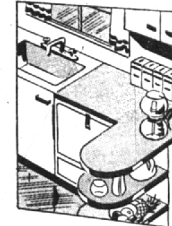
32800 Franklin Road
FRANKLIN VILLAGE
A FINE SCHOOL FOR
LITTLE PEOPLE
Transportation Furnished

ENROLLING NOW
for
FALL TERM

PHONE
MAyfair 6-2790 or
MAyfair 6-3020

A NEW PLASTIC TOPPING SATUSPLY

Product of The U. S. RUBBER CO.

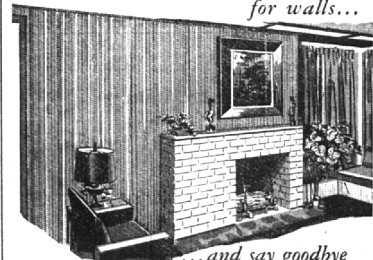


for
TABLE TOPS
BARS
CABINETS
or any work
surface

resists boiling water, burning
cigarettes, alcohol, and fruit acids
30" widths - Colors
YELLOW, GREY, GREEN, RED

Be sure and see the colorful, full page
WELDTEX Advertisement in the July issue
of your favorite home magazine.

THIS time choose WELDTEX® for walls...



...and say goodbye
forever to repairs and repainting

This handsome, striated plywood can really take lots of wear. It never needs repairs. Weldtex is made to last a lifetime, and that makes it about the most economical wall paneling you can buy.

Because Weldtex is easy to handle you can install it yourself, over old walls or studs. Give it whatever finish you prefer—natural, stained, "pickled" or painted. Get Weldtex in big panels, 4 feet wide and 8 feet long, or longer, 1/4" thick. Get some in 12, 16 or 24 inch squares, too, and work out your own designs for special effects. Wonderful for ceilings and fireplace walls.

Weldtex is inexpensive to buy and economical to own. See it, and judge for yourself.

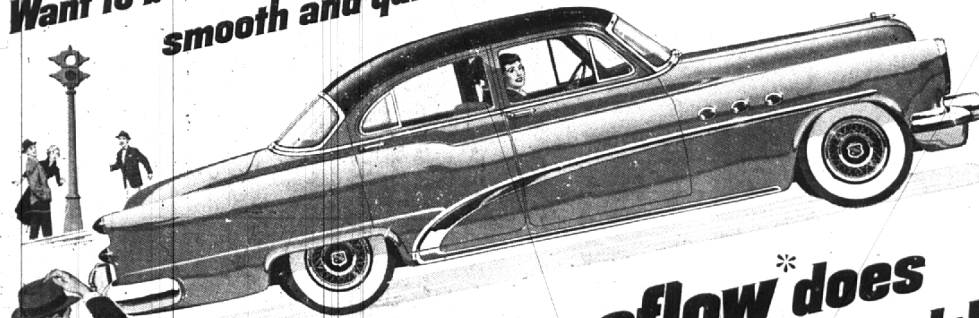
LAWSON & SON LUMBER & SUPPLY CO.

653 S. Eton Rd.

BIRMINGHAM

Phone MidWest 4-6810

Want to be nimble,
smooth and quick?



TT Dynaflow* does
the trick!

We have just the place for you. If such is your desire.

It's at the wheel of a 1953 Buick with Twin-Turbine Dynaflow.

And we suggest you hold on to your hat and your heart when the action starts—for here's what happens:

You press the pedal and, from a standing start, you're up to a legal 30 mph before you have time to breathe but twice.

Or, you're in the thick of traffic—moving smoothly, easily, quietly. Then, when it's safe to do so, you move instantly into the clear with the greatest of ease—in one progressive build-up of velvet acceleration—without a single gear shifted or a clutch pedal pushed.

That, sir, is the big thrill command you get in any 1953 Buick SPECIAL, SUPER or ROADMASTER with Twin-Turbine Dynaflow.

For this fully automatic drive now has two turbines where one did the trick before. Two turbines for instant getaway response—with whisper quiet—and with infinite smoothness through all ranges.

Of course, a lot of able power goes with this smooth, quick getaway—the highest horsepower and compression ratios, Series for Series, in all Buick history.

And so does big room. And the supreme comfort of the Buick Million Dollar Ride. And the superb handling ease of finely

balanced weight. Even Power Steering* is at hand to make parking and turning still easier.

Why not drop in on us soon and sample one of these great new 1953 Buicks with TT Dynaflow? It's an experience—and a value story—too good to miss.

*Standard on Roadmaster, optional at extra cost on other Series.

THE GREATEST
BUICK
IN 50 GREAT YEARS

WHEN BETTER AUTOMOBILES ARE BUILT BUICK WILL BUILD THEM

808 S. Woodward

SUMNER MOTOR SALES, Inc.

Phone MI 4-9100