

Commander V-8 Sedan. White sidewalls, chrome wheel caps and glass-enclosed light glass—optional in all models at extra cost.

It's excitingly different! The new American car with the European look!

You get this advanced styling only in a Studebaker

At surprisingly small cost, you can become the proud owner of a strikingly original new Studebaker—a brilliantly powered Commander V-8—or a sleek-lined Champion that's one of America's lowest price cars. Order yours now—a sedan, coupe or hard-top—a gas economy team-mate of the Studebakers that starred in this year's great Mobilgas Economy Run.

- NEW** foreign car flair in nine body types!
- NEW** American comfort and handling ease!
- NEW** longer wheelbases and wider treads!
- NEW** expanses of glass for big visibility!
- NEW** and finer Studebaker "Miracle Ride"

Marshall has new Power Steering—and Automatic Drive or Overdrive—available at extra cost in all models.

Carkner Motor Sales, Inc., 666 S. Woodward, MI 4-3410



That's right... the ideal weather for outside painting is on its way out, so give a thought to the protection your home needs for the hard weather ahead. Are your storm sashes and doors ready? You'll find no finer, more enduring paints than these at Birmingham Paint.

- **COOKS** Super white and regular
- **BENJAMIN MOORE**
- **TRUSCON** • **DEVON**
- **REYNOLDS** One coat white

GLIDDEN'S ENDURANCE HOUSE PAINT

White, with 15 pastel shades. All trim colors.

SUMMER STORE HOURS

Monday thru Friday 8:30 to 5:30; Saturday 8:30 to 5:00.



BIRMINGHAM PAINT

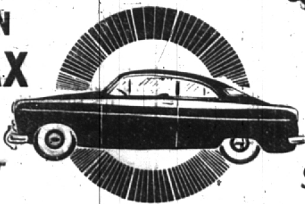
Glass & Wallpaper Co.

335 E. Maple MI 4-3737

We'll Give YOUR CAR A Diamond-Like Glean

FOR ONLY \$12.50

- WASH
- CLEAN
- WAX
- BUFF



AUGUST

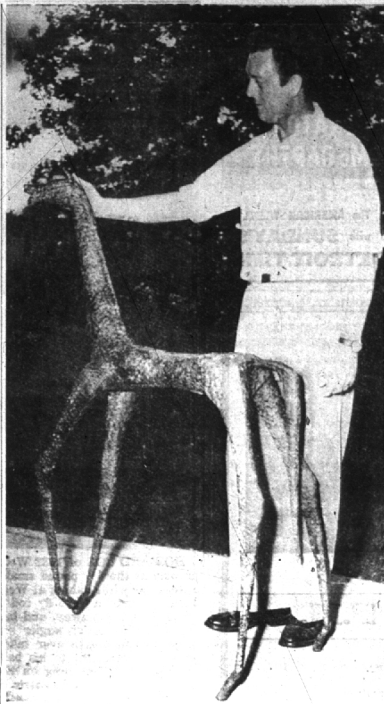
SPECIAL

KELLER-KOCH, Inc.

479 S. Woodward Ave.

MI 4-1200

Use the Eccentric Want Ads



WHOA! Sculptor Marshall Fredericks appraises one of the entries for the second annual outdoor art festival at Kirk-in-the-Hills August 27-29. Exhibits will range from oil and water colors to sculpture and the graphic arts. (Eccentric Staff Photo)

Slaughter Named Authority Head

William E. Slaughter, Jr., 3294 Bingham Lane, Southfield township, president of the Aurora Gasline Co., recently was chosen chairman of Michigan's turnpike authority.

The authority will attempt to construct one of the most outstanding turnpike systems in the country, according to Slaughter.

One of the authority's first steps will be to retain a traffic engineering firm to study the prospects of turnpikes between Detroit and Chicago and Detroit and Toledo.

Francis J. Van Antwerp of Cheboygan was named vice-chairman of the authority and Rollin McConnell of Detroit was chosen as temporary secretary-treasurer.

Call Midwest 4-1100 to place an Eccentric Classified Ad.

Buy Police Car

Southfield township board members Tuesday night approved the low bid of the Berkley Motor sales

August 13, 1953

THE BIRMINGHAM ECCENTRIC

Page 5

for the township's first police car. Cost of the six cylinder Ford was quoted as \$1300.

To buy or sell a used automobile, read and use Eccentric Classified Ads.

Himelhoch's is open Saturdays all summer
Birmingham store hours, 9:30 to 5:30

accessories are high-seasoning for into-fall fashions

- Bolero**, black velveteen with Spanish braided trim. Sizes 32 to 38, \$5
- Belt**, black velveteen contour is a waist-beltting beauty. Sizes 24 to 30, 2.50
- Handbag**, a soft fold-over clutch with gold-colored frame. Black, brown or navy rayon velveteen. Also in velveteen in fall shades. \$6 plus federal tax.
- Gloves**, black rayon velveteen with smooth-fitting sheer fabric palms. 3.50 pr.



Special Notice!

You are cordially invited to an informal showing of new Fall casuals from Glen of Michigan, Wednesday, August 19th, Birmingham store.

WOW!
Look at this We pay you up to...



for the tires you trade now on new ALL-NYLON CORD Double Eagles by **GOODYEAR**

Come in today for the BEST tire deal in town

STERNAL'S

Free Parking In Rear of Store

408 S. Woodward MI 4-3520 Open Friday Evenings to 9

YOUNG COWHAND'S RETREAT IN KNOTTY PINE

by *Habitant*

Bunk Bed 79.95

5 Drawer Chest 89.50

4 Drawer Chest 79.50

3 Drawer Chest 73.50

Panel Bed 49.50

AN OPEN STOCK GROUP

Small-fry cowhands love to "bunk up" in a room furnished with genuine Michigan Knotty White Pine pieces by Habitant. In this practical youth's bedroom furniture, Habitant designers and craftsmen have faithfully captured the romantic traditions of the Old West. Young cowboys and cowgirls will be delighted. Or, if they're young pirates, these same pieces fit well into a salty nautical motif. The take-a-part bunk beds convert easily to regular twin beds, too. This Habitant group is being featured in the September issue of House and Garden Magazine... see our display of this wonderful knotty pine furniture today. Other groups and individual pieces are also available for living room, dining room, bedroom and recreation room.

LEWIS
Line Furniture

235 Pierce Street Phone MI 4-4920
PONTIAC STORE 62-70 South Saginaw Street, Pontiac

"FOR 30 YEARS—THE HABITANT LINE... PERFECTION IN PINE"