

How Many Feet Would You Need To Pass Safely?

With/Oncoming Traffic			No Oncoming Traffic		
YOUR SPEED AND SPEED OF ONCOMING CAR	DISTANCE REQUIRED		YOUR SPEED	DISTANCE REQUIRED TO PASS	
	If your speed is 10 m.p.h. greater than car you are passing.	If your speed is 15 m.p.h. greater than car you are passing.		If your speed is 10 m.p.h. greater than car you are passing.	If your speed is 15 m.p.h. greater than car you are passing.
20 m.p.h.	480 feet	320 feet	20 m.p.h.	240 feet	160 feet
30 m.p.h.	960 feet	640 feet	30 m.p.h.	480 feet	320 feet
40 m.p.h.	1600 feet	1066 feet	40 m.p.h.	800 feet	533 feet
50 m.p.h.	2400 feet	1600 feet	50 m.p.h.	1200 feet	800 feet
60 m.p.h.	3360 feet	2240 feet	60 m.p.h.	1680 feet	1120 feet
70 m.p.h.	4480 feet	2986 feet	70 m.p.h.	2240 feet	1493 feet

Hawkshaw Is Hero of Next Players' Show

Hawkshaw, the detective, enters many of the original situations in "The Ticket of Leave Man," Tom Taylor's ancient melodrama now in rehearsal by the Village Players for presentation April 27 through 28 as the annual spring public show.

"The Ticket of Leave Man" is said to be the first play or story in which a detective emerged as a hero. It is considered by literary historians to have begun the whole cycle of present-day detective stories.

Although Hawkshaw is popularly known as a comic strip character, he was actually created for the play by author Tom Taylor in 1893.

IN THE PLAY, a young man is falsely imprisoned, and on his release is given a "ticket of leave," the equivalent of a discharge. After his release, his path to honest employment is balked at every turn by his enemies.

The Players has taken especial

pains to point out that this play contains not only Hawkshaw but also two eye-in-the-sleeve villains. In addition to the usual schemes, their proctors include a diabolical plot in a graveyard with the objective of crushing Hawkshaw under a falling monument.

It will require six scenes to stage the production at the Village Players, with a cast of 22 people in addition to strings and orchestra.

THE SCRIPT being used by the Birmingham organization came to light in the turret of a Greenwich Village apartment in New York 20 years ago when Francis J. Murray, an Oakland County writer, was permitted to explore the dusty loft.

Murray had loaned the play to Director Al Henshaw, who has edited it after comparison with other versions, to provide it with a manuscript approximating the 1890 production of the play in America.

Earle Wilson is designing the

settings, including a large oil drop which will punctuate every act and provide background for song-and-dance specialties between scenes.

Gains Army Discharge From Signal Company

Cpl. Paul D. Pickens, son of Mr. and Mrs. Paul R. Pickens, 4221 Arlington Drive, Beverly Hills, has returned to his home after completing two years as a member of the 85th Signal Radio Relay Company of the Army.

Cpl. Pickens received his basic training at Camp Gordon, Ga.; his schooling at Camp Cooke, California, and his technical training at Ft. Meade, Md. He completed his service period at Camp San Luis Obispo, California.

While stationed there he was chosen Soldier of the Month for the base, and was named Soldier of the Week five times.

Memorial Day Committee Promised Financial Aid.

Agreeing to the request of the Birmingham Veterans Memorial committee, city commissioners have voted financial aid to the annual Memorial Day observance here.

The agreement was made after George R. McHugh, committee secretary, presented a full report of current plans and with the understanding that all bids not to exceed \$50, must be presented to the city within 30 days.

2 Aboard USS Midway

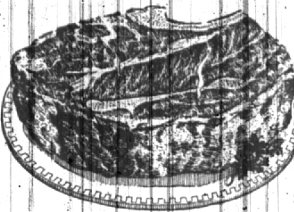
Albert D. Bryant, airman, USN, son of Mr. and Mrs. Lewis Bryant, 2915 Fourteen Mile, and Navy Lt. (jg) William E. Holmes, son of Mr. and Mrs. Harold W. Holmes, 512 Madison, are aboard the USS Midway engaged in "Operations Rendezvous" in the Mediterranean.

Five Tickets Left

Edwin F. Kibbert, secretary of the Birmingham YMCA, reports that 14 sets of 10 tickets left for the Detroit Tigers opening day baseball game with the Cleveland Indians April 24. Information on the lower grandstand seats may be obtained from the YMCA.

To buy or sell a used automobile, read and use Eccentric Classified Ads.

A Sure Way To Get More For Your Pay! Cash In On A&P's Big Buys!



"Super-Right" Choice Grade Blade Cut
Chuck Roast Lb. **39c**

Grain-fed steer beef, selected to meet A&P's high standards, cut to give full value—no neck portions included—and priced to save you money. Try it.

Arm or English Cuts Lb. 49c

Pork Loin Roasts "Super-Right" Fresh Loin Portion Lb. **39c**

Smoked Picnics "Super-Right" Hockless Small Size Lb. **39c**

Ground Beef "Super-Right" Fine For Loafs or Patties Lb. **39c**

Beef Steaks "Super-Right" Round or Sirloin Lb. **79c**

Rib Roast "Super-Right" First 5 Ribs—7" Cut Lb. **59c**

Boiling Beef Lean, Fresh "Super-Right" Boneless Lb. **15c**

Stewing Beef "Super-Right" Boneless Lb. **59c**

Pork Chops Choice Center Cuts Lb. **79c**

Leg O' Lamb Milk-Fed Tender Lb. **73c**

Sliced Bacon "Super-Right" Lean, Rindless Lb. **59c**

Canned Picnics Lean Delicacies 4 1/2 Lb. Can Lb. **2.97**

Ring Bologna All Meat Lb. **39c**

Sliced Bologna Large Center Slices 4 to 7 Lb. Average Lb. **49c**

Beltsville Turkey Average Lb. **73c**

Ganned Hams 8 to 12 Lb. Average Lb. **89c**

Corned Beef Pilefilm Package Lb. **69c**

Luncheon Meats 4-Variety Package Lb. **67c**

TOAST IT! TASTE IT! IT'S DELIGHTFUL!

Jane Parker **WHITE BREAD**

20 Oz. **17c**

NUTRITIOUS, DELICIOUS, AND A WONDERFUL VALUE!

FRESH, JUICY JANE PARKER Apple Pie 39c

Heaped high with juicy apples, this flaky-crust pie comes fresh from the oven in a reusable tin.

Glazed Donuts Tender Fluffy Dozen **37c**

Spanish Bar Tasty Loaf Cake Each **39c**

Lemon Meringue Pie 8-inch Size Each **49c**

ANN PAGE QUALITY Tomato Soup

4 10 1/2-Oz. Cans **35c**

THANK YOU BRAND Keifer Pears

29-Oz. Can **25c**

SPRING SPECIAL

REGULAR \$720.00 VALUE

11' x 20' Extra Well Built Garage

Including rat wall, sales tax and permit.

ONLY \$649.00

STOPPERT & CECIL

General Builders
4380 DIXIE HWY. DRAYTON PLAINS

Phone Orlando 3-7724
If No Answer call Orlando 3-2120

NO MONEY DOWN—F.H.A. TERMS
Free Estimates

Cake Donuts Golden Brown, Sugared or Cinnamon 8 in Pkg. **19c**

Cinnamon Loaf Try It Toasted! Each **19c**

Pound Cake Gold or Marble Butter Large Doz. **49c**

Vanilla Sandwich Cookies. 8 in Pkg. **19c**

Sandwich Rolls Fine for Hamburgers 6 of 8 **19c**

Potato Chips Jane Parker Fresh Wonderful Flavor 1-Lb. Box **69c**

Dinner Rolls Just Heat and Serve! 16 Pkg. **15c**

Butter Kernel Corn Pump. Tender 2 16-Oz. Cans **35c**

Green Giant Peas 17-Oz. Can **19c**

Peas & Carrots Butter Kernel Brand 17-Oz. Can **21c**

Waxed Beans Stokely's Finest 5 1/2-Oz. Can **21c**

Stokely's Apricots 8-Oz. Can **15c**

Wesson Oil Pt. Bot. 37c Qt. Bot. **69c**

Velvet Peanut Butter 11-Oz. 32-Oz. Jar **77c**

Orange Base California Real Gold 2 6-Oz. Cans **29c**

Maraschino Cherries Liberty 10-Oz. Can **35c**

M & M Candy Crisp Candy Coated Chocolates 7-Oz. Cello Bag **25c**

Crisco For Digestible Fried Foods 1-Lb. Can **33c** 3-Lb. Can **89c**

Gloss-tex Starch 8-Oz. Box **31c**

Sprite Soap Grains 12-Oz. Pkg. **25c**

Ivory Soap Medium Size 3 Cakes **25c**

Lava Soap 2 Reg. Cakes **21c** 2 Large Cakes **29c**

Kirk's Castile Soap 2 Reg. Cakes **19c**

Camay Soap 3 Reg. Cakes **23c**

Baby Foods Beech Nut Strained 4 4 1/2-Oz. Jars **39c**

Chopped Foods Beech-Nut 3 7 1/2-Oz. Jars **43c**

Green Beans Fresh—Fleming 2 11-Oz. Cans **35c**

Golden Corn ASP Fresh Style 2 16-Oz. Cans **27c**

Soups Campbell's of Heinz Vegetable Varieties 2 Reg. Cans **27c**

Whitehouse Milk Evap. 2 Tall Cans **25c**

Corned Beef Hash Broad-cut 16-Oz. Can **29c**

Tomato Juice Flavor-Rich 46-Oz. Can **23c**

Sunnyfield Flour 5 Lb. Bag **39c**

Iona Peaches Halves 29-Oz. Can **25c**

Frostee Dessert Lipton's 2 4 1/2-Oz. Pkg. **25c**

Ann Page Noodles 16-Oz. Pkg. **25c**

Northern Tissue Thrift Priced 3 Rolls **23c**

Scott Towels or Northern 2 Rolls **39c**

Angel Soft Closing Tissues 4 of 40 Box **23c**

Fels Naptha Laundry Soap 10 Bars **69c**

Ann Page Ketchup 2 14-Oz. Bott. **35c**

Sultana Cocoa 12-Oz. Tin **29c**

Our Own Tea Black 1-Lb. Pkg. **39c**

Pie Crust Mix Jiffy Brand 2 9-Oz. Pkg. **29c**

Apple Sauce Morgan's 2 16-Oz. Cans **29c**

dexo Shortening 3 Lb. Can **79c**

Brooms Century Brand No. 5 Each **89c**

Pork & Beans Sultana 16-Oz. Can **10c**

Kidney Beans Sultana 16-Oz. Can **10c**

Whole Beans Somban 16-Oz. Can **10c**

Macaroni Ann Page 8-Oz. Pkg. **10c**

Dog Food Daily Regular or Fish Flavored 16-Oz. Can **10c**

THERE'S ANOTHER ROOM IN YOUR ATTIC!

MAKE USE OF THIS WASTED SPACE!

Give your youngsters a place of their own, where they can study, entertain their friends, and grow up with their hobbies.

We have the top line of flooring, paneling and insulation materials that you will need to do the job at lowest possible cost.

STOP IN TODAY! WE CAN RECOMMEND A QUALIFIED CONTRACTOR, OR WE WILL HELP YOU DO IT YOURSELF. DON'T PUT IT OFF, DROP IN AT ONCE.

FOR CALL
MIDWEST 4-3636

BIRMINGHAM LUMBER & SUPPLY COMPANY, Inc.

1025 HAYNES Between Hunter and Adams, 5 Blocks South of Maple
HOURS: 7:30 to 5:00 Mon. Thru Fri., 7:30 to 1:00 Saturday MI 4-3636

CALIFORNIA TENDER, GREEN Asparagus 2 Lbs. **39c**

New Yellow Onions Texas Grown 4 Lbs. **29c**

Head Lettuce Garden Fresh 2 48 Side Heads **25c**

Fresh Corn Yellow Hybrid Grown in Florida 6 Ears **45c**

Egg Plant Very Tender and Delicious For Frying Each **19c**

Gucumbers Garden Crisp Fancy Waxed 2 For **19c**

New Cabbage 7-Oz. Cello Bag **7c**

Bananas Top Quality Golden Ripe Lb. **16c**

Oranges Florida Sun-Ripened Valencia Mesh Bag 8-Lb. **49c**

Tomatoes Red Ripe Southern Grown 14-Oz. Can **29c**

Potatoes U. S. No. 1 Grade New White 10 Lbs. **69c**

Carrots Crisp, Tender Sweet Flavor 2 1-Lb. Cello Bag **25c**

Radishes For Crisp Spring Time Salads 3 Bunches **20c**

Cole Slaw Regularly Ready For The Table 2 8-Oz. Cello Bag **29c**

Cashew Nuts Regalo 6-Oz. Cello Bag **29c**

Grass Seed Oxford Park 5 Lb. Bag **1.89**

WISCONSIN MILD Cheddar Cheese Lb. **49c**

Cheese Spreads Swift's Brookfield 2 Pkg. **39c**

New York Cheese Sharp Cheddar Lb. **69c**

Ched-O-Bit Processed Cheddar Cheese Food 2 Lb. **85c**

Muenster Cheese Fresh—Mild Flavor Lb. **59c**

Colby Cheese Wisconsin Lb. **57c**

Brick Cheese Fresh Wisconsin 1/2-Lb. Pkg. **59c**

Mel-O-Bit Processed Pimento Cheese Slices Lb. **29c**

Provolone Salami Italian Type Cheese Lb. **65c**

All prices in this ad effective through Sat., April 11th.

A&P Super Markets
THE GREAT ATLANTIC AND PACIFIC TEA COMPANY