

Between-the-Acts Skits to Enliven Players' Drama

Nobody will squirm in his seat waiting scene changes at the Village Players' production of "The Ticket of Leave Man" starting next Thursday, April 23, thanks to revival of old fashioned musical specialties between the acts.

Speed of action and rapid changes of scene are part of a production style made popular during the Twenties and Thirties. Things actually happen more swiftly than in most modern plays, and when the old time drop descends at the end of a scene, another act takes place in front of the curtain without pause.

Dick Cloonan stars as the youthful Bob Brierly in "The Ticket of Leave Man" and his nemesis, James Dalton, is played by Carlton Scott, with Russ Richardson as his accomplice.

CHRIS JEYNES weeps through most of the scenes as Max Edwards, the heroine, whose lot is brightened only when she and Brierly are given employment by banker Gibson, played by William Treach.

Hawkeshaw, the detective, was created for this play in 1903, and that role will be filled by Howard McDonald.

Others in the cast are Wally Wiers, George Green, Irene Crofoot, Tom Klingemann, Helen Siding, and Ed Deetz.

Musical specialties and interludes will enliven the brief periods between scenes. The Players have announced that this play is open to the public, opening Thursday, April 23, and continuing through Sunday, April 26.

Tickets for the four performances are on sale today at the Markley Farm Nook, 247 W. Maple, or can be obtained from the Players' office chairman, Mrs. Robert Wyatt, 211 S. Glenhurst.

Health Groups Sponsor Young Parent Classes

Weekly classes for new parents started last week with Tuesday sessions at Wallied Lake high school and Wednesday meetings at the Oakland county office building in Pontiac. Registrations of couples in the Birmingham area will be accepted until April 22 for the balance of the course.

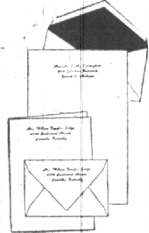
Discussion and instruction groups will be in prenatal care, good nutritional standards for mother and baby as well as the whole family, the new baby and his needs, which will outline the family adjustments necessary.

Visits to the maternity sections of St. Joseph Mercy hospital will be included in the course.

Classes are sponsored by county and municipal health departments.

To buy or sell a used automobile, read and use Eccentric Classified Ads.

April Sale



New Colorful

**RYTEX
COLORAMA**

PRINTED STATIONERY

Beautiful envelope linings in color of Twilight Sky, Red Bud, Willow Green, or Blue Grass. Print your Name and Address printed to match the envelope lining.

Fine quality White, Medium-weight paper with lettering in Script, Block, or Stracciatella style.

Double Quantity
April only 2.25

Regular Price \$2.50

- 200 SINGLE SHEETS
- 100 ENVELOPES
- or
- 100 DOUBLE SHEETS
- 100 ENVELOPES
- or
- 100 LARGE-FLAT SHEETS
- 100 ENVELOPES

COLORAMA is for all the family . . . for men as well as women . . . so order today during this DOUBLE QUANTITY April Sale.

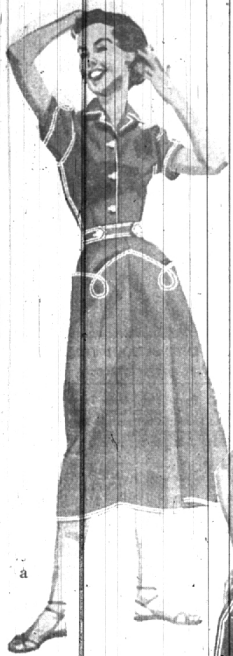
La Belles

137 W. Maple
Birmingham's Shop of Gifts
Books and Stationery

SAILCLOTH

Separates by

White Stag



You'll be wonderfully see-worthy in sun-time separates by White Stag. Designed in Original Sailcloth, they're washable, wearable, and have the verve of a rollicking sea chanty. The colors sing, too.

Select yours for sun-up to sun-down summer hours . . . for playing, shopping, and round-the-house wear. Prompt stitch to style . . . from fit to flair . . . they're unmistakably WHITE STAG!

- a. COVER TOP for wearing in or out. Sizes 10 to 20 . . . 1.95
- LAZY SUSAN WRAP SKIRT with adjustable waistband. S. M. L. . . . 7.95
- b. SLEEVELESS TOP to wear tucked in or out. Sizes 10 to 20 . . . 1.50
- LITTLE BOY SHORT cuffed shorts, side-zipped. Sizes 10 to 20 . . . 3.95
- c. TOGGLE JACK with chevron pockets on upper sleeves. NS-S-M-L . . . 6.95
- CALFSKINNERS tapered-to-calf. Sizes 10 to 18 . . . 5.50
- d. CARRY-ALL with plastic lining, matching colors . . . 2.95
- e. STA-BRA stays in place, detachable, adjustable straps, 10 to 20 . . . 2.95
- WHISTLE BRITCHES uncuffed shorts, with side zip. 10 to 16 . . . 3.75
- f. TRAINMAN'S JACKET with adjustable cuffs, sizes 10 to 20 . . . 6.95
- CLAMDIGGERS classics for roll-up, roll-down casualness 10-20 . . . 4.95

COLORS - Jean White, Sail Red, Summer Navy, Ice Black Charcoal, Heavenly Blue, Seal Brown, Sun Yellow - all with contrasting railroad stitching.

SPORTSWEAR — STREET LEVEL

Jacobson's

MAPLE AT BATES
BIRMINGHAM

Jacobson's Is Your Fashion Footwear Headquarters for INGENUE - PALIZZIO - JOYCE - RED CROSS - CAPEZIO - OLD MAINE TROTTERS - HILL & DALE