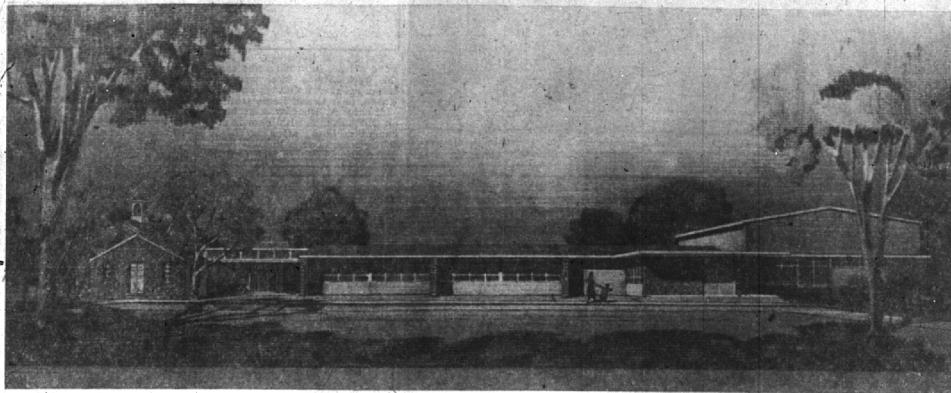


Sept. 8 Vote to Decide Addition to Wing Lake School



ARCHITECT'S SKETCH PICTURES WING LAKE SCHOOL ADDITION
Four more classrooms and all-purpose room needed to accommodate enrollment.

OLSEN'S MARKET



407 W. Brown at Chester
Midwest 4-1916

One block south and one block west of the Birmingham Community House

Specializing in . . .

- CHOICE MEATS.
- POULTRY & FISH
- FRESH FRUITS & VEGETABLES
- STAPLE & FANCY GROCERIES

FREE DELIVERY

ALWAYS PLENTY OF PARKING SPACE

28 Years of Service to Birmingham



1756 MELBORNE AVE. — Just South of Quarton School
OPEN NOON TO 6 P.M. SUNDAY
OR BY APPOINTMENT

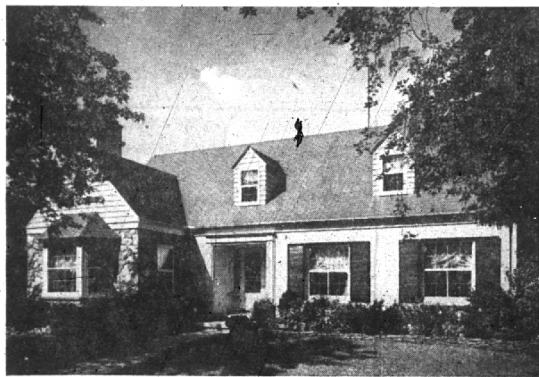
The low cost will please you. Three beautiful bedrooms with one full bath and one fully tiled lavatory room off master bedroom. Library walls paneled to ceiling in ribbon stripe mahogany. Spacious screened porch facing fully landscaped lot. Living room, dinette and main stair hall in driftwood. First floor powder room with colored fixtures. Unusual kitchen with breakfast nook. G.E. Disposal, Formica counter tops.

Just completed under personal supervision of

WILLIAM H. KUNI, A. I. A.

Registered Architect
19642 Shrewsbury Road, Detroit 21, UN 1-7447
or call your own Birmingham Realtor

QUARTON SCHOOL



Here is a delightful brick, fieldstone and frame Cape Cod home on a nicely landscaped, corner lot. Two large screened porches, one of which acts as a breezeway to the two-car garage, afford enjoyment of this pleasant setting.

Built by James Jaikins & Sons, which bespeaks finest construction and conscientious attention to detail, there is a Master bedroom, tiled, full bath and pine-paneled library on the first floor. Two huge bedrooms and luxuriously appointed bath up.

Carpeting, dishwasher and disposal included. Please call us for an appointment to see this charming home.

**WATT, MANUEL
& SNYDER, Inc.**
Realtors

Robert F. Watt

Ralph Manuel

M. E. (Shorty) Snyder

298 S. Woodward

Midwest 4-6300

In Basic Training

Pvt. Paul Trichel, son of Gervais W. Trichel, 616 Puritan, recently joined the 10th Infantry Division at Fort Riley, Kansas, for 16 weeks of basic training.

LAKE ANGELUS

Magnificent year 'round residence with elegant grounds. 22 acres. Everything in perfect condition. Studio-type living room; exquisite paneled detail by Berkey & Gay. Boat hse. Indoor swimming pool. Service Bldgs. Mgrs. hse. The finest property on the lake. Buy it for 1/10 its cost. Estate Liquidation.

the symbol of choice
SUBURBAN PROPERTIES

visit
SNYDER & KINNEY BENNETT
239 So. Woodward
BIRMINGHAM

Bloomfield Hills School District Number Two residents will cast their ballots Monday, Sept. 8, on the proposed \$275,000 addition to the Wing Lake school.

Voters will be asked to authorize the issuance of bonds to cover the cost of the addition and to approve the levying of millage to cover principal and interest of these bonds.

The millage schedule will be 1.40 mills for each year from 1952 to 1956, 2 mills each year from 1957 to 1967 and 2.40 mills for the year 1968.

The present Wing Lake school contains four classrooms and additional population in this area has outdistanced the building. The addition would include four more classrooms, an all-purpose room, clinic, kitchen and administrative offices.

THE ALL-PURPOSE ROOM would serve as a cafeteria, gymnasium, public meeting hall and provide space for dramatic work.

The new building is planned for the northeast corner of the present structure. Architects are O'Dell, Hewlett and Luckenbach of Birmingham.

Because of the crowded conditions existing in the Bloomfield Hills schools, the overflow of pupils in the Wing Lake area have been transferred to the Vaughan school in the past and will continue to be housed at Vaughan until additional space is found.

School officials believe that Vaughan school will also reach the bursting point by next year.

The Vaughan auditorium has already been partitioned into three classrooms to accommodate the record number of students.

The school district will have ten new teachers on hand this year.

They include Irving Menuret, administrative assistant; Earl Fernelius, Janice Johnson, Ruth Manes, Charlotte Nass, Mrs. Bar-

**TYPEWRITERS
ADDING MACHINES
REPAIRED**
New and Rebuilt Typewriters
For Sale—Rentals
Birmingham Printing
369 EAST MAPLE • MI 4-4740

bara Velkoff, Gwendolyn Moore, Vera Grim, Charles Lemke, Jean Sitterlet and Joseph LaRoe.

YMCA Opens Door To Game Contests

A ping-pong tournament for boys and girls 8 to 10 and another for 11 through 14 years olds will be conducted by the Birmingham Y.M.C.A. Friday starting at 10 a.m. There will be prizes for the winners.

A checker and shuffleboard tournament will also be conducted at the same time. There is no entry fee and membership in the Y.M.C.A. is not required for this journey. In the event that entries exceed time schedule allotments, the finals will be run off Saturday, Sept. 6.

A cartoon movie program and an hour of archery shooting will be featured at 10 a.m. Saturday, Sept. 6.

The regular Y Fall and Winter program will begin September 15 when the new Gra-Y and 'Y' building schedules will be announced. The 'Y' is open daily for games and television hours.

C. A. Sparks Releases Sales Tax Fund Figures

Oakland County Treasurer Charles A. Sparks this week released figures on the second quarter distribution of the state sales tax division monies. Distribution is based on a census of 1559 per capita, with allocations made as follows:

Birmingham, \$24,592.53; Bloomfield Hills, \$2,334.12; Bloomfield township, \$6,123.09; Southfield township, \$2,413.41; Troy township, \$16,038.33 and West Bloomfield township, \$17,864.80.

**INSURANCE - BONDS
THE BIRMINGHAM AGENCY**
INSURANCE for EVERY NEED
Phone MI 4-2422
106 S. Woodward - Birmingham
Chas. B. Randall Oscar P. Peterson
AFTER we SELL we SERVE

Plan YMCA Retreat Friday, Saturday

The fifth Young Adult Retreat of the Detroit YMCA Branches will take place Saturday and Sunday, September 6 and 7, at Camp Ojibwa, according to an announcement by Lynn Russell of Edgewood Avenue who heads this program.

Dr. W. Dewey Blockson of Grand Rapids will serve as Conference Leader and the theme is "Principles of Group Dynamics."

Elaire Jones, Laurie and Joyce Reid, Betty Perkins, and Edwin F. Kivert of Birmingham Branch YMCA will represent local groups.

"All women," said the bachelor, "are biased?" "Yes," replied the married man, "buy us this and buy us that!"



How \$10 may save you \$10,000

Any day you may wake up with a damage suit on your hands. If a postman, milkman or tradesman hurts himself on your premises — if part-time servants hurt themselves in your employ — if your child or dog hurts somebody — if you hit somebody with a golf ball — MAYBE YOU'VE GOT A LAWSUIT ON YOUR HANDS.

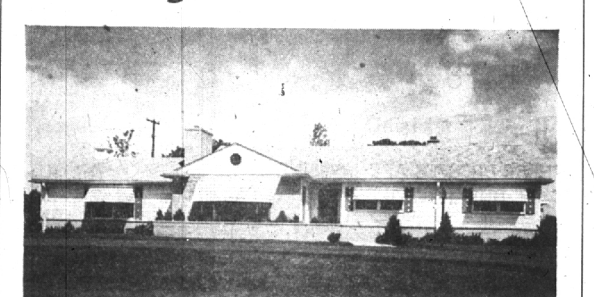
But there's a fine new "bar-gain" America Fore policy which covers just about every damage to people and property for which you're legally liable.

For \$10 a year it will protect you up to \$10,000, and also insure medical payments up to \$250 for non-family injuries even if you're not legally liable. Ask us.

LET US DO YOUR
**BLUE PRINTS - WHITE PRINTS
PHOTOSTATS AND TRANSPARENTS
BIRMINGHAM BLUE PRINT
AND SUPPLY COMPANY**
W. S. McALPINE
636 SO. WOODWARD
OPPOSITE WRIGLEY'S
Open Weekdays and
Saturday Forenoon
PHONE
MI 4-3733

BERESFORD-THOMPSON
General Insurance
"We Insure Everything
But Yesterday"
EDWIN M. BERESFORD
OTIS C. THOMPSON
LOUIS HASCALL
176 North Woodward Avenue
BIRMINGHAM Ph. MI 4-8930

Rambling Ranch Home



SNOW SHOE CIRCLE

Artistically sprawled on a 170-foot site, there's a "country air" here that will delight you. 1951-built, it's in perfect condition—exquisitely decorated.

Spacious living room 17.2 x 22.6. Dining room 14 x 12. Philippine mahogany paneled library. Glamorous bath with twin lavs., mirror. 2 bedrooms.

Lovely carpeting and draperies are included. Barbecue in yard. Aluminum storm, screens, awnings. Lake privileges for bass fishing and boating.

Why not see it today? Appointments arranged to suit your convenience. \$37,500.

SNYDER & BENNETT
INC.
Realtors
239 South Woodward
Midwest 4-7000

Can YOU pay \$5,000.00 to fight POLIO? AND 8 OTHER DREADED DISEASES . . .

Get Protection on All . . . in One Policy!

\$5,000 INCREASING TO **\$10,000**
(\$5,000-\$10,000 on each member of your family)
to pay expenses of these 9 dreaded diseases

POLIO
DIPHTHERIA
ENCEPHALITIS (Sleeping Sickness)
LEUKEMIA (A Disease of the Blood)

**SCARLET FEVER
SMALLPOX
TETANUS (lock)**
SPINAL MENINGITIS
RABIES (Includes Preventive Inoculation)

One Policy Insures All your Family*
*Husband, wife and all unmarried children from 3 months to age 18.

only \$10 a year . . . or \$4 insures one person

Pays Benefits for . . . Doctor Bills, Hospital Bills, Special Nurses, X-ray, Physiotherapy Treatment, Blood Transfusions, Drugs and Medicines, Iron Lung, Crosse and Crutches, Ambulance, Transportation.

PHONE MI 4-7300

BINGHAM & BINGHAM
310 Wabec Bldg., Birmingham