

LUMBER-TERIA

?????

OPENING NEXT WEEK!

FOR THE MAN IN YOUR LIFE

THE CANDY CREATED FOR MEN ONLY!

KINGS CALIFORNIA (HUMBUGS)

RUMBUGS
MAGNOLIA MINTS
JAVABETTS
BLACKLOLLIES

Delicious hand-crafted, flavored for the "HE-MAN" taste. Cash price wrapped individually. Made of the finest ingredients. Your different flavors each packed in "HE-MAN" style. **\$1.25** (100 pieces)

Call Midwest 4-1100 to place an Eccentric Classified Ad.

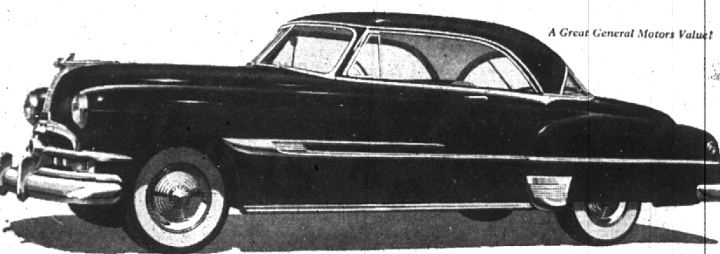
YOUNG'S OF BIRMINGHAM

203 PERCE ST. OPEN THURSDAY and FRIDAY EVENINGS

FRENCH, SHRINER and URNER Shoes

Call Midwest 4-1100 to place an Eccentric Classified Ad.

The Most Wonderful Miles of Your Life!



More Go!

Less Gas!

Drive it Yourself!

The most wonderful miles of your life start the minute you get behind the wheel of a new Pontiac and drive it yourself! Come on in any time, it's a pleasure for us to introduce you to this great new performer.

Get all the wonderful things you want in a car—including low price! The perfect way to get this done is to come in and look at the great new Dual-Range* Pontiac, then get behind the wheel and drive it yourself. You'll see what we mean!

Pontiac is big, distinctive and famous for dependability. Pontiac gives you spectacular Dual-Range performance—to match your power to traffic or to the open road, automatically!

And what economy this car will show! In Cruising Range, engine revolutions are cut 30 per cent—for more go on less gas! Come in and see how great a low-priced car can be!

Dollar for Dollar you can't beat a Pontiac

WATCH THE TV FOOTBALL GAME OF THE WEEK EVERY SATURDAY ON NBC TELEVISION—STAY TUNED FOR HERMAN HICKMAN'S PONTIAC SHOW AFTER EVERY GAME

WILSON PONTIAC-CADILLAC, Inc.

275 North Woodward Ave. Phone Midwest 4-1930 and Jordan 4-6655

Down to Earth

By ALICE WESSELS BURLINGAME

Last week your writer "left" you in the W. A. P. John garden on Tooting Lane.

As there are so many ideas for the new gardener it seemed best to "draw out" the excursion to share more detail with you. As Mr. John is such a genial host I am sure that you have enjoyed being "left in his garden."

In the John garden the guest house has white clapboards which give a large surface to be cared for with plant material. If anything along a white wall you have discovered that soon vines and low growing plants become sun-burned and your results will be plants which look dried up and the crop of flowers is generally sparse. Mr. John has been fighting this condition along this white wall and finds that the silver lace vine is perfect for this sunny location.

"The biggest investment for one dollar," says this experimenting gardener.

This vine is a fast growing vine. Insects don't like it and it will grow 15 to 20 feet the first year. It will cling to any surface, must have full sun, and good drainage. In summer it is covered with thousands of white sprays of flowers.

BESIDE THE guest house is a circular "room," about 40 feet in diameter, which has been built of plant material. Around the exterior are choice lilac shrubs, very tall. Inside the area and in front of the lilacs are evergreens (yew) and groundcovers which like shade. Then in front of you is the figure of Pan nestled in the plant row opposite the entrance. The atmosphere of this garden room made me feel as though I was in an open-air church.

Michaemas daisies, which are an important flower in the garden their splendor, were shown in all their splendor. Mr. John keeps them trimmed to five spikes per plant.

Three years ago he purchased three dozen Jecojum bulbs and this season has a bushel and a half to replant or share. These want a semi-shade area with lots of leaf-mold. They are white bells with great tips on the petals.

Peonies have come in for their share of experimenting in this garden.

Mr. John says, "Never plant a peony before." If you still want peonies for a second time in the same location it is necessary to dig a hole two and one-half feet in diameter and replace the soil with new material. He also placed rotted cow manure a foot deep in the bottom of the hole.

WINTER GARDENING is very important at this home and last year the Johns completed an orchid room in what used to be their sunroom. The electric heat is incorporated in the ceiling. Heat, light, and humidity are controlled by their own time clocks. The humidity is 50 per cent during the night and 60 per cent during the day.

Against one wall a sink has been installed with cupboards for Mrs. John's flower containers. The sink is 18 inches deep to allow a flower arrangement to sink into flower arrangement. The bottom of the sink is covered with a layer of wood slats so they drain and water beneath can provide needed humidity.

In the corner of the plant room is a card table and a copper tray is incorporated. The bottom of the tray has been layered with

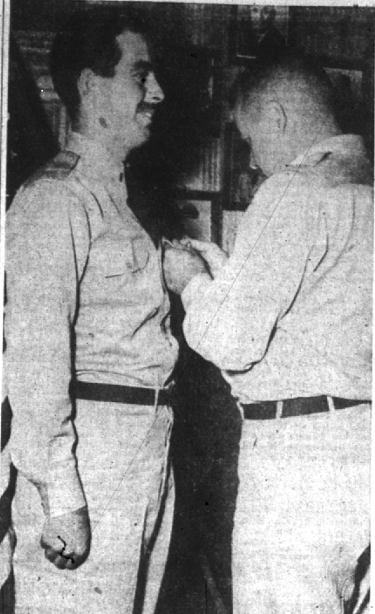
Pre-school Children 2 1/2 - 5 yrs.

Apple Orchard School

- Rhythm Classes.
- Transportation
- Day Care

459 S. Adams MI 4-4222

Enrollment now accepted for Fall



SECOND LIEUTENANT KINGSLEY G. PURTON, JR., son of Mr. and Mrs. K. G. Purton, 1020 Chesterfield, smiles appreciatively Col. Robert J. Rogers, commander of the 49th Fighter-Bomber Wing in Korea, presents him with the Air Medal. Lt. Purton made daily interdications and close support strikes against vital Communist targets in North Korea flying his Thunderjet from a forward airstrip. (U. S. Air Force Photo)

plaid moss and on this surface the plants are displayed.

PLANTS, such as orchids, choice begonias, and rare foliage plants, are enjoyed around the seasons. There is one very important point to emphasize as given by your host—this room with all of its controls and plants still remains the cozy room in the house with its lounge chairs and tables inviting friends to sit down and relax; to enjoy a view of the well planned yard and the warmth of friendship.

This is the time of year to place your order for spring bulbs. You don't put them into the ground until October but the choice soon will be gone from the market. Make this the year when you experiment with the many different bulbs to introduce unusual effects in front of your foundation plantings and plant them in the ground covers of those areas which will not grow grass.

As soon as flowering shrubs drop their leaves it is time to move them if they are too crowded.

The hope around the branches of the shrub to be moved, have the new location prepared and with speed make the change. Compact the soil well around the base of the plant and for assured result water well with the hormone mixture now available to assure a safe transfer.

High School Hits Class A Rating

With an enrollment of 1206 students that mounting every day, Birmingham high school is in Class A for the first time in its history, exceeding the basic 800 by over 400 students.

Helping to bring the school to capacity of 1300 were 247 freshmen, assigned to the high school for the first time this fall. Over 300 tenth graders also swelled the ranks.

Schools are classified by the state athletic association for purposes of competition. Class A being an enrollment of 800 and up; Class B, 600-799; Class C, 300-499; and Class D below 299. For many years Birmingham has been in Class B, last year rising to 730 enrollment.

The new classification will make little difference in athletic competition in the regular seasons. Birmingham has met almost straight Class A teams for a number of years. The Eastern Michigan

APTITUDE TESTS

write YOU to learn the kind of work YOU can best succeed in, or the kind of studies YOU should follow. (For men and women, boys and girls.)

1952 National Counseling Institute
Daniel L. Bush, Director
958 Macomber Bldg., Temple 1-1951
Woodward near Warren



Decorators' DREAM

the answer to your decorating problems

THE NEW 24" WIDTH TRIMMED FABRIC WALLCOVERING

Strong, closely woven canvas, the fabric artists choose for permanence, covered with quality paint—five separate coats baked on! This wallcovering is permanently washable, scuff resistant and won't tear or peel off. It is particularly useful for covering cracks. In the future it can be painted over.

Patterns or Plain Trimmed and Ready for Hanging

BE SURE TO ASK FOR AND SEE THIS AMAZING WALLPAPER AT

BIRMINGHAM PAINT GLASS & WALLPAPER CO.

369 E. Maple Midwest 4-3737

COMPLETE TRAVEL SERVICE

Phone MI 4-5550

Plane — Train — Ship — Tour

Hotel Reservations

Birmingham Travel Service

Grace Plummer Rully
In The Campbell's Village Store

LEGAL NOTICES

Frank J. Staskey, Attorney at Law, 202 Lawyers Bldg., Mt. Clemons, Mich.

STATE OF MICHIGAN — The Probate Court for the County of Oakland, in the Matter of the Estate of Thomas L. Henderson, Deceased.

All a session of said court, held at the Probate Court in the City of Pontiac, in said County, on the 2nd day of September, A. D. 1952.

Present: Honorable Arthur E. Moore, Judge of Probate.

Order appointing time for hearing claims.

Notice is hereby given and it is hereby ordered that the time and place for hearing on claims against the above estate shall be the 1st day of December, 1952, at nine o'clock in the forenoon at the Probate Court in the Court House at the City of Pontiac, Michigan.

All creditors or claimants against the above estate are hereby notified and ordered to prove their claims and send written claim therefor, with this Court order with, containing sufficient detail reasonably to inform the fiduciary of the nature and amount of the claims.

ARTHUR E. MOORE,
Judge of Probate.
12-27-52

Clarence W. Blomson, Wabek Bldg., Birmingham, Mich. 1409

STATE OF MICHIGAN — The Probate Court for the County of Oakland, in the Matter of the Estate of Harry Louis Sevin, Deceased.

All a session of said court, held at the Probate Court in the City of Pontiac, in said County, on the 26th day of September, A. D. 1952.

Present: Honorable Arthur E. Moore, Judge of Probate.

Order appointing time for hearing claims.

Notice is hereby given and it is hereby ordered that the time and place for hearing on claims against the above estate shall be the 1st day of December, 1952, at nine o'clock in the forenoon at the Probate Court in the Court House at the City of Pontiac, Michigan.

All creditors or claimants against the above estate are hereby notified and ordered to prove their claims at said hearing and prior to said hearing to file and with the fiduciary of this estate, and with the fiduciary of this estate, a written claim containing sufficient detail reasonably to inform the fiduciary of the nature and amount of the claims.

ARTHUR E. MOORE,
Judge of Probate.
12-27-52

Oliver H. Kirk, Attorney-at-Law, Wabek Building, Birmingham, Mich. 1412

STATE OF MICHIGAN — In the Probate Court for the County of Oakland, in the Matter of the Estate of George F. J. Henderson, Deceased.

All a session of said court, held at the Probate Court in the City of Pontiac, in said County, on the 2nd day of September, A. D. 1952.

Present: Honorable Arthur E. Moore, Judge of Probate.

Order appointing time for hearing claims.

Notice is hereby given and it is hereby ordered that the time and place for hearing on claims against the above estate shall be the 1st day of December, 1952, at nine o'clock in the forenoon at the Probate Court in the Court House at the City of Pontiac, Michigan.

All creditors or claimants against the above estate are hereby notified and ordered to prove their claims at said hearing and prior to said hearing to file and with the fiduciary of this estate, and with the fiduciary of this estate, a written claim containing sufficient detail reasonably to inform the fiduciary of the nature and amount of the claims.

ARTHUR E. MOORE,
Judge of Probate.
12-27-52

General news deadline is 4:30 p.m. each Tuesday.

THIS SMART NEW ROPER AUTOMATIC GAS RANGE...

Is Styled for Your Kitchen And Your Convenience

Completely AUTOMATIC Oven Cooking ★ Center-Simmer TOP BURNERS ★ AUTOMATIC LIGHTING throughout ★ Easy-to-use STAGGERED Cooking Top Roomy BAKE-MASTER OVEN ★ SCIENTIFIC Oven Cooking Chart ★ SILENT-GLIDE BROILER with Chromo-Grill ★ Giant, Handy Store-All DRAWER DE LUXE... ★ Streamline Fluorescent LAMP ★ Modern STYLING

Automatic Model Shown \$274.75 OTHER MODELS PRICED FROM

\$141.50

Enjoy the modern convenience of automatic gas cookery. No other range has more modern features. You can set the oven clock and leave your home. Thereon will automatically start and shut off — and, when you return, your meal is completely cooked, ready to serve.

Check our TRADE-IN OFFER for your old range TODAY

Consumers Power Company

AG-3072-27