

### Southfield Town Meeting Cut Short

The Southfield township board Tuesday night met briefly to pass on urgent business and then adjourned until Friday night out of respect of the death of the mother of Board Member Glenn C. Hague.

After signing the vouchers for bills and payroll, the board took time enough to authorize the purchase of a new dog warden truck.

from North Chevrolet. Price of the truck will be \$650 with the trade-in of the old truck.

They also passed a resolution approving the construction of a 12-inch water main extension from Nine-Mile to Ten-Mile, Ten-Mile and Berg road.

### Concert Singer Opens Studio Here

Mrs. Aurelia Tonti Peralto, concert singer and pianist, will open a voice studio in Birmingham soon.

Mrs. Peralto first studied to be a concert pianist in Europe and later took vocal training with outstanding European artists. Before coming to this country, she played the viola in the Sciarlati Symphony and Opera company. She has appeared in many European operas.

A voice teacher in Detroit for the past 20 years, she has been a guest artist in Birmingham many times.

### PECK'S

Cash and Carry  
Plain Dresses \$1.39  
Suits, Topcoats  
CLEANED and PRESSED  
Dry Cleaning PHONE MI 4-7724  
WOODWARD — NEAR MAPLE

### HELD OVER!



After a sensational summer engagement, the Joe Banket Trio has signed another contract for 22 weeks at the Bloomfield Inn for your listening and dancing pleasure.

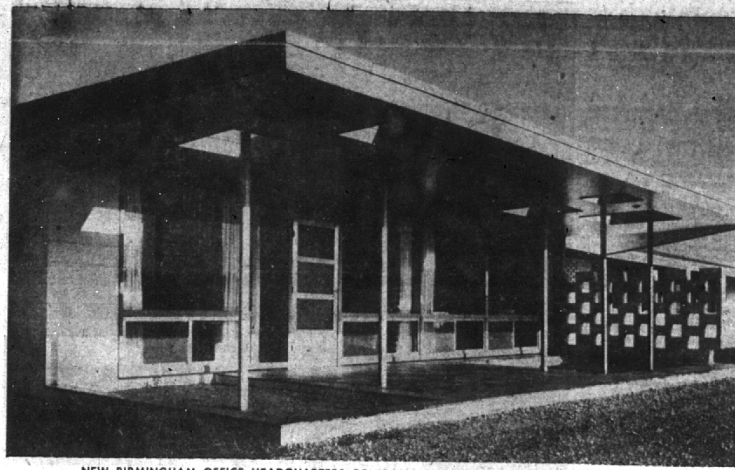
### DANCING and ENTERTAINMENT

6 Nights a Week  
Monday through Saturday  
**JOE BANKET TRIO**  
Detroit's Outstanding Trumpet Artists  
BUDDY REGENER at the Hammond Organ

Excellent Food at Popular Prices

**Henry's Bloomfield Inn**  
Oakland County's Smartest  
SUPPER CLUB

OPEN 4 P.M. to 2 A.M. DAILY EXCEPT SUNDAY  
1420 S. Telegraph Rd. For Reservations Phone FEderal 5-8060  
at Orchard Lake Rd.



NEW BIRMINGHAM OFFICE HEADQUARTERS OF BRAMSON PUBLISHING CO. ON AXTEEL ROAD  
Provides additional space, is located in center of production area

## Police Protection Costs Are Higher Here

(Special to the Eccentric)

NEW YORK, Sept. 19—The cost of police protection is higher in Birmingham than in most other cities of comparable size in the United States.

This finding is based on figures gathered from 1,296 cities of over 10,000 population by the International City Managers Association and presented in its current Municipal Year Book.

Local taxpayers were billed \$110,800 for police department operation in 1951, amounting to \$7.24 for each person residing in the city. This was more than the median cost of police protection in the other cities of Birmingham's size group, 10,000 to 25,000 population, which was \$4.59 per capita.

The principal factor in the cost of operating police departments is salaries and wages, constituting about 70 percent of the total. It varies from 81 percent in cities under 25,000 to 94 percent in cities over 500,000.

The starting salaries paid patrolmen and their maximum salaries vary widely, with the larger cities paying the top figures. In general, the figures are from \$200 to \$300 higher than those paid a year previously.

In Birmingham's size group, the median entrance salary is \$2,880 and the maximum \$3,125, including cost of living adjustments.

Locally, as of the beginning of the year, patrolmen start at \$3,880. The top for the rank is \$4,305.

BIRMINGHAM'S POLICE force is larger, in proportion to the size of the city, than are those of most communities of its size. With a complement of 25, including uniformed and civilian employees, the local department has 1.64 men on the payroll for every 1,000 residents. Other cities of its size average 1.21 per 1,000. Nationally, there are 1.29 per 1,000.

Some cities, it is noted, require more police than do other cities because of unusual traffic problems or other special local conditions, so that the cost and numbers employed should be weighed against performance and accomplishments.

### ROSEMOND HILLS INN

Now Under the Management of

### JOE MASTERS

Luncheons  
Dinners  
Banquets  
Receptions  
Cocktail Lounge  
and Bar

For real eating out enjoyment, you'll find that Rosemond Hills Inn is the very best. A friendly atmosphere where the food will be appreciated to the fullest degree by family or important guests. The main dining room or arrangements for a private one are at your service. Rosemond Hills Inn is open seven days a week. Dinners served each evening until 11 P.M. For reservations call MAYfair 6-3563.

30230 Inkster Rd. between 12 & 13.  
N. of Northwestern

### BIRMINGHAM

Birmingham, Mich. - Midwest 4-3533 - A United Detroit Theatre

OPEN MONDAY THROUGH FRIDAY, 6:45 p.m.  
SAT. - SUN. - HOLIDAYS 1:45 p.m.

Now Showing Through Tuesday, Sept. 30

**SHE'S BACK WITH HER "GILDA" MAN!**

**Rita HAYWORTH**  
**Glenn FORD**

**Affair in Trinidad**

with Alexander Scourby • Valerie Bellis • Boris Karloff • James Finlayson • Robert Barr • James C. Beaton • Produced and Directed by ROBERT ROY POOL • A MURKIN PRODUCTION

PLUS  
VAN JOHNSON PATRICIA NEAL

**'Washington Story'**  
COMING SOON  
JOAN CRAWFORD in "SUDDEN FEAR"  
Plus  
"WAIT 'TILL THE SUN SHINES, NELLIE"

## Publishing Company In New B'ham Office

Bramson Publishing Company, publisher of Production Engineering & Management, has moved into its new modern building at 1400 Axteel road in Troy township, a mile east of the Birmingham business district.

The building serves as publishing headquarters for the magazine's nationwide operations. The company has district offices in Chicago, Cleveland, Cincinnati, New York and Boston, and representation on the West Coast.

Production Engineering & Management, founded in 1934, has a readership of more than 100,000 production executives in mass production metalworking plants.

Roy T. Bramson, co-founder and publisher who lives on Lone Pine road, Bloomfield Hills, says the new building and location have the dual advantages of providing needed additional space for the magazine's business, editorial news sources in Wayne, Oakland and Macomb counties.

ments and of placing the entire operation near the geographic center of the world's largest mass production area.

"THE DETROIT area today is more than ever the capital of mass production," Bramson said. "For our publication, which is edited exclusively for production executives in mass production plants, it's essential that we conduct our operations at the nerve center of this type of production."

"When it developed that we needed more space, we decided to move to a location that would put us nearer to many of our important news sources in Wayne, Oakland and Macomb counties."

### KINGSLEY INN

Dining Room

SPECIAL LUNCHEON MENU

STUFFED

### DEVILED CRAB

French Fried Potatoes  
Rolls & Butter

\$1.25

Woodward at Long Lake Road  
Bloomfield Hills, Michigan  
Midwest 4-1400

### BLOOMFIELD

Birmingham, Mich. - Midwest 4-6006 - A United Detroit Theatre

OPEN MONDAY 6:45 P.M. SAT.-SUN. 1:45 P.M.  
THRU FRI.

Now Showing Through Saturday, Sept. 27

We made it just for fun... and laughter!

**CLIFTON WEBB** **GINGER ROGERS**

**Dreamboat**

co-starring ANNE FRANCIS • JEFFREY HUNTER • Elio Lanca • Ray Collins • BOB C. SIEGEL • CLAUDE BINYON • CLAUDE BINYON

—PLUS—

LIVE AGAIN... LAUGH AGAIN... LOVE AGAIN... these Wonderful ROARING TWENTIES!

**HAS ANYBODY SEEN MY GAL**

with Piper LAURIE • Rock HUDSON • Charles COBURN • Gigi PERREAU

Starting Sunday, Sept. 28th for 7 Days

JOHN WAYNE — NANCY OLSON  
in  
**"Big Jim McLaine"**  
—PLUS—  
GLEN FORD in  
**"The Green Glove"**

**SHOP** WHERE QUALITY COUNTS

Be a Clever penny Saver

CHOICE  
**BEEF POT ROAST 69¢ lb.**

**Peabody's Apple Cider 79¢ GAL.**

Delicious **TOKAY GRAPES 2 Pounds 25¢**

Tender **CELERY HEARTS 15¢ Bunch**

Farm Fresh **FRYERS 52¢ lb.**

Fresh, Rib Cut **Pork Loin Roast POUND 49¢**

Choice—Spring **Lamb Legs 85¢ lb.**

**SAVE ON FOOD BILLS EVERYDAY**

GAINE'S **DOG MEAL 5 pounds 65¢**

New Homogenized, More Nourishing, More Appealing, Feed moist or dry.

Wonderful for salads and main dishes.  
Deming's Alaskan Sockeye **RED SALMON 1 lb. Tall Can 71¢**

Keyko **OLEO 25¢ lb.**

Farm Fresh **EGGS Medium 52¢ doz.**

**PEABODY'S SUPER MARKET**  
154 HUNTER at MAPLE MI 4-5222  
Open every evening except Saturday Sunday hours: 10 a.m. to 8 p.m. WE DELIVER Free Parking, Front & Rear of Store

Tops for School Lunches **Strawberry Preserves 2 Jars 49¢**

Good to the Last Drop **Maxwell House COFFEE 1 lb. Can 84¢**

OCOMA **CANNED WHOLE CHICKEN 3 lbs. 12 oz. \$1.59**