

Beverly Hills Girl Spends Summer Abroad

BEVERLY HILLS—Foreign countries, famous people and places and, on the way home, an iceberg in the North Atlantic are among the memories of the summer for Mary Wesley of Devonshire road.

She flew to England early in the summer to start a two-month tour of eight European countries, along with six other University of Alabama students.

While "based" at London, she saw several of the historic cathedrals of the city with a side trip to Stratford on Avon to see the home of Ann Hathaway, Shakespeare's birthplace and the nearby church yard where he is buried. They saw a performance of Macbeth before touring the old manor houses.

The works of famous artists, Van Dyke, Holbein, Durer, Rembrandt and others were seen in the cathedrals and ancestral homes of famous British figures.

"WARWICK CASTLE," Miss Kelsey said, "with its high walls and old design, reminded me of the pictures illustrating children's books."

The main hall of the castle had a display of armor which had been worn by members of the family.

The Tower of London, crown

STERNAL'S
for
GOODYEAR
Tires and Tubes
FREE CUSTOMER
PARKING
In Rear of Store

COMPLETE TRAVEL SERVICE
Phone MI 4-5550
Plane—Train—Ship—Tour
Hotel Reservations
Birmingham Travel Service
Grace Palmer Realty
In The Cambridge Village Store

FALL SEEDING + Scott's
= Beautiful Lawn at Modest Cost

August 18 to 25
\$1.10 to \$1.30
September 1 to 15
\$1.10 to \$1.30
October 1 to 15
\$1.10 to \$1.30
November 1 to 15
\$1.10 to \$1.30

Nature cooperates—makes NOW the favored time to fix up old lawns or build new lawns. First apply TURF BUILDER to feed grass, then sow Scott's SEED to provide a luxurious carpet of perennial grass.

Scott's LAWN SEED

Finest quality permanent grasses for fall seeding. You need only a third as much because of the millions of sure growing seeds in each package.

1 lb. \$1.50 5 lb. \$7.35

Scott's Spreaders—make it easy to feed, seed or de-weed. Do a better job, save time and materials \$7.35 and \$12.50

PARKER LAWN SWEEPER

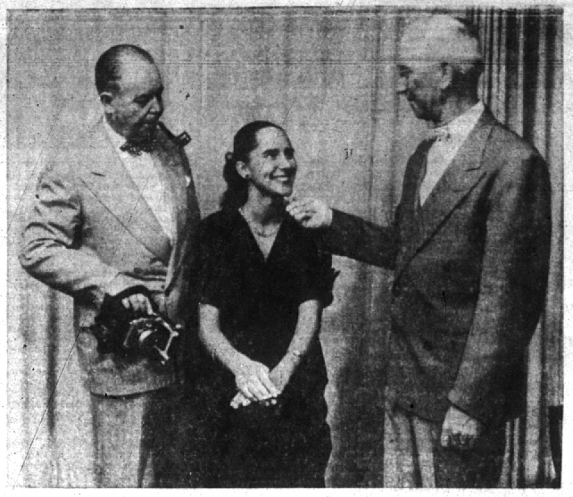
- Heavy-duty bassine fiber brushes
- Adjustable sweeping height 0" to 2 1/2"
- Ball bearing brush reel
- High strength construction

- Fold-away construction for easy storage
- Basket rollers for easy pushing
- Lift out basket on Parkerette models

20' Parkerette
Unusually maneuverable around flower bed and narrow walks. 4 bushel capacity.
\$35.50

28' Parkerette
5 1/2 bushel capacity.
\$41.00

HUSTON HARDWARE CO.
OUR FORTY-THIRD YEAR
BIRMINGHAM'S OLDEST HARDWARE STORE
205 N. Woodward
Midwest 4-7330



CAMERA IN HAND, Ed Batty, Bloomfield Hills Camera club program director, watches while Walter Barkley, club president, poses Kathy Hyland in a rehearsal for the group's public "shoot" on Sept. 18. Miss Hyland will "star" during the evening when camera fans will have the opportunity of working under professional conditions, with a living model. "My Favorite Model" has been selected for the theme of the session which is to be held at the Cranbrook Institute of Science, starting at 8 p.m. (Camera Club Photo)

Down to Earth
By ALICE WESSELS BURLINGAME

Evergreens can be successfully planted this time of year. Be sure and have the branches tied up during the planting process and have a generous supply of water available. The plants should be placed at least 42 inches from a foundation and at least 48 feet apart.

The best time to prune evergreens is the latter part of June and during July. (Pin me down to my pruning time and I will have to admit that I use my surplus branches and tips for holiday decorations.) All during this series of articles I have quoted local experienced gardeners as saying that the best kind of evergreens for foundation planting at the front of the house is the yew (taxus).

Yews come in all shapes and can be selected for the need. Taxus brownii are especially good in front of picture windows because they can be trimmed as a compact hedge, boxed beneath the window.

Other evergreens often used for foundation planting will fulfill their assignment if they are placed in the sunny location. Therefore, I would only consider them on the south and east sides of a foundation.

TO MAKE pine trees more compact, cut off the branch tips where needed to give a better proportioned tree.

It is very important to thoroughly soak your newly planted evergreens twice a week up to the time of the first heavy frost, as each small needle is a storage tank for water. Needles must be filled to face the trials of our Michigan winters.

As you plan your back yard buy as many evergreens as the budget will allow. They assure you of constant joy during the winter and mixed among the flowering shrubs provide strength of texture

and sweet alyssum to assure them of a cycle of color.

WHEN GARDENS are small it is important to select flower colors which will be compatible with the background provided by the building. The small flowering bulbs, which are so popular, would be ideal for these compact gardens. Due to their proportions they would be better than tulips. Vines would give a nice background if the occupant had a south or east exposure.

Around the curve on Tooting Lane and on the right you see the lush garden of the W. A. P. John family. There is a large lamp post at the curb with morning glories coiling up it and just see the curved path to the front door! On each side of the walk they have planted a two-foot bed of snow storm (the variety with the most flowers) petunias.

To the left of the front door they had to trim a hemlock high so at the base of the tree they have a large-leaf ivy taking over the glasmorra what would be an unsightly base. Mrs. John has put an attractive over-sized green glass jug against the trunk to give interest.

BOXWOOD HAS been planted at each side of their front door and makes experienced gardeners envious. It is the Wellcut variety, is kept clipped. Protection built over it in the winter to prevent snow damage to its clipped style.

Take the path to the right around to the garden and you will be full of questions regarding the Japanese RUSH. It provides the verticle line for the extensive flower beds. This specimen of grass is now eight feet high, graceful and will have large, graceful plumes "which will develop any day."

During this visit I found so much good advice to pass along from this firm gardener that I am going to copy the memoranda and continue the visit to the John garden next week.

*** Smile a Minute ...**

"I never said I didn't like her," a woman defended herself. "I merely remarked that all the polish she had was on her finger-nails."

Mulholland's

Skippies Formfit

...the light way to a trim, lovely figure

No heavy bones in Skippies. Nothing to pinch, poke or bind. They're soft and cool and weigh next to nothing. Yet they keep you beautifully trim and sleek! Formfit's can't-be-copied design and tailoring turn the trick. Smooth you with a whisper of control, a world of comfort. We have Skippies girdles and panties in your length—your choice of styles and elastics. All wash in a wink, dry fast. Have yours in a wardrobe for every daytime and date-time need!

Girdles and Panties from \$3.95
Skippies Foundations from \$9.95

P. S. If she's a slimmer, remind Grandma she can wear Skippies, too. They're for "juniors" of all ages!

The F. J. Mulholland Company

HOOT MON! We've got Koret of California's New Campus Career Pair-offs!

Stephanie Koret takes a tip from the Highlanders and fashions Pair-Offs in Authentic-Plaid, a specially developed blend of rayon and wool yarns with a crease-resistant, worsted-type finish.

In Campbell of Cowder, Chisholm Hunting or Black Watch... all Authentic clan plaids, sizes 10-18. Mate them with 100% wool flannels and nylon-applied-to-acetate Ribany!

Highland Fling Jacket
Bonnie Flare Skirt

Koret of California

Wee Wee Kit
(L) Highland Smarty Pants
(R) Roxford Flannel Adjusto-Waist Flare Skirt

The F. J. Mulholland Co.
Open Friday Evenings Till Nine