

SEE OUR WINDOW DISPLAY

Now YOU can

PAINT Beautiful OIL PAINTINGS

the first time you try! IT'S QUICK—IT'S EASY—IT'S FUN—with

Picture Craft

DECORATE YOUR HOME No lessons, no training—not even any hard to follow instructions. Picture Craft's pre-mixed oil colors and numbered canvas guide your hand like a master painter's, yet the painting is your very own original work.

Results Guaranteed No mix, no mess, no error. Men, women, of all ages, even children have taken to this fascinating hobby. Everything you need contained in one compact package. You'll be amazed at the results—pleased with your new found ability. Get your Picture Craft kit, today.

Choose from 21 Beautiful Artist-Designed Subjects



\$2.95 ONLY 2 per set

- Includes:
 - Numbered Artist Canvas (16 x 12)
 - Pre-mixed oil colors
 - Special artist's brush
 - Complete painting instructions
 - Picture size canvas (18 x 24) also one half of \$2.95.

We Also Do Picture Framing

There's Always a Bargain At **AUSTIN'S** since 1888

Artist & Hobby Supplies Michigan's Finest Wallpaper Selection

PHONE LI 1-6070 Open Friday & Saturday Evenings 12 Mile Rd. Just East of Post Office, Berkeley

To Treat Pupils With Fluoride In Bloomfield

Fluoride treatments for school children in the Bloomfield Hills school district will begin Monday with grades 3, 6, and 9 first to be treated.

Application of sodium fluoride to the teeth to reduce tooth decay is part of a program being sponsored by the Michigan Department of Health. The treatment will cost each child \$4.

Cards with parents' signatures accompanied by payment of the treatment must be in the hands of school authorities before the treatments can be given.

All treatments will be given at the Vaughan school but will include students at the Wing Lake and Pine Lake schools. Grades 2, 5 and 8 will receive the fluoride application in the spring.

The school is calling on parents to assist in the treatments to keep costs to a minimum.

NO HUNTING — NO TRESPASSING signs may be purchased at the office of The Eccentric. (30)

DRIVES

(Continued from Page One)

Participating directly in the drive are 65 League members under the chairmanship of Mrs. Joel Warren. Team captains are Mrs. Dudley Campbell, Mrs. Keith F. Alcorn, Mrs. Robert Restricker, Mrs. John E. Queck, Mrs. Paul Robertson and Mrs. Thomas Canley.

MRS. WARREN said success of the drive would determine the extent to which the League can offer the public factual information of government in the coming year. The League supplies voters' service bulletins and special information prior to every election.

"On the Record," a National League publication, is expected to be available soon for distribution to League contributors. This is a special election edition of voting records of senators for the past five years and representatives for the past two years.

It summarizes United Nations and Defense Facts, Foreign Aid, International Trade and Economic problems.

The "Membership Tea," first general L.W.V. meeting for the season, will be held Monday, Sept. 22

BARNUM

(Continued from Page One)

for serving lunch. This arrangement has to be set up immediately following a class in physical education. At the close of the lunch period tables have to be cleared up. The room restored for class use. The need for this cafeteria has been evident for several years and the congregation of the school.

The need for this cafeteria has been evident for several years and the congregation of the school.

THE INDUSTRIAL ARTS program also is very adequate in the industrial arts department. Ordinary classrooms 22x30 feet in size have been used for this department.

With the traditional formal seating three lots adjacent to the industrial arts equipment has been installed. These classes are congested to the point where safety measures can scarcely be provided for students.

This portion of the building is not fireproof and the fire hazard is very serious. It is very necessary and urgent that a new industrial arts building be designed for at least 1000 square feet.

THE MUSIC department also is severely restricted. One room is available for both instrumental and vocal music. The vocal music is scheduled for the entire day, instrumental music has been almost crowded out of the program.

THERE ARE inadequate provisions for the care and storage of instruments. There are no practice rooms and the entire instructional program is seriously affected.

Real progress has been made in the instrumental music program in the elementary schools, and adequate provision has been made for the instrumental program in the senior high school.

The lack of adequate facilities in the junior high school is very discouraging and weakens the entire instrumental music program of the school system.

The art room is inadequate in size for the instructional program alone, and lacks storage facilities for all of the art supplies. The plan calls for the remodeling of the present industrial arts rooms into art rooms to meet this need.

The library facilities of the school are inadequate and provision must be made to bring the library up to modern standards for junior high school work. Additional shelving must be provided and a room should be available for receiving and cataloguing books.

THE OFFICE AREA has to be greatly increased. It is inadequate and inefficient and interferes with the effective administration of the school. The outer office is too small and becomes very congested. Offices are not adequately provided.

The Birmingham Eccentric Published every Thursday, at Birmingham, Mich., in the office of The Eccentric, 122-222 North Woodward Ave., Telephone MI 4-2525. GEORGE R. AVERILL Editor and Publisher

Entered as Second Class Matter in the U. S. Post Office at Birmingham, Alabama, under the Act of March 3, 1879.

SUBSCRIPTION RATES (In Oklahoma County)

One Year	\$3.00
Six Months	1.75
Three Months	1.25
One Year	\$4.00
Six Months	2.25
Three Months	1.75

MISHAPS

(Continued from Page One)

Lansing and Sgt. Quentin Parsons, stationed in Germany and two sisters, Mrs. Stanley Pickinlinski of Southfield township and Mrs. Clayton Walsh of Birmingham.

Services were Wednesday afternoon from the Bailey funeral home with burial in Rosemount cemetery. The Rev. W. Glen Harris of the First Presbyterian church officiated.

Services for the Thompson baby were held from the Bailey home Monday, with burial in Woodlawn cemetery, Detroit. The Rev. Harry Martin, D.D., of the First Methodist church officiated.

ONE OF the serious restrictions in planning the new facilities for this school when the limitations in size of the school site, The Board of Education recently acquired three lots adjacent to the site on George street and plans to add to the site when property becomes available.

There are no plans at the present time for the condemnation of property in this area for school purposes as proposed in a recent study by Dr. Barr.

NEXT WEEK: School site needs.

Kiwanis Kids' Day Set For Saturday At Southfield Hi

The Southfield-Kiwanis Club will celebrate National Kids' Day on Saturday, Sept. 20, with an afternoon of fun and attractions for the youngsters at the Southfield High school.

One of the township's new fire trucks will be on hand for display purposes and the small fry will be treated to a clown band, pony rides, games, refreshments and prizes.

The Kiwanis Club will finance the entire afternoon's program through the sale of Kids' Day buttons which can be purchased now from any member of the Southfield organization.

Hours for the event will be from 1 p.m. until 5 p.m. The Southfield High school is on Lahmer just south of Ten Mile road. In case of rain the program will be held in the school garage.

Use Classified Ads—They Sell!

Kids' Day Buttons

Birmingham city commissioners have approved the request of the Birmingham Kiwanis club to permit the street sale of National Kids' Day buttons here Sept. 27.

Funds received from the sale are used to help finance Kiwanis work among underprivileged children.

Assessment rolls for improvement of an alley and widening of Eton, between Lincoln and 14 Mile, will be up for confirmation on Sept. 22, city commissioners decided Monday night.

The alley, scheduled for road-digging yet this year, is in the block bounded by Park, Brookside and Ravine.

Here's a way to stow away some Pin Money!

TAKE ADVANTAGE OF THIS REXALL SEPTEMBER SPECIAL

REXALL De LUXE TOOTH BRUSHES

Choose from 5 styles with Hyzon bristles, including popular fine texture... or from 2 styles in natural bristles.

NOW 2 FOR 79¢

REG. 59¢ EACH

Choose from 5 styles with Hyzon bristles, including popular fine texture... or from 2 styles in natural bristles.

REG. 59¢ EACH

REXALL ASPIRIN, 54c per bottle of 100 5-grain tablets

REXALL ALCO-REX, 49c each, soothing, lavender-colored alcohol body rub, perfect for gym or work-room, just

REXALL ANAPAC, 49c each, combines antihistamine and APC Compound for quick, symptomatic cold relief, 15 tablets 49c

HELEN CORNELL RUBBER-TIPPED BOBBY PINS

Protect hair and scalp... teeth and nails, too! Made of finest spring steel... extra length, sure grip.

CARD OF 72 REG. 25¢ NOW 19¢

REXALL MILK OF MAGNESIA, pure, mild, creamy-smooth, non-disagreeable earthy taste, pint... 39c

REXALL MI-31, amber-color mouthwash, gargle, breath-deodorant and all-purpose antiseptic, pint... 79c

REXALL QUIK-SWABS, 200 sterile, cotton-tipped applicators, ideal for nursery and first aid... 49c

1/2 PRICE SPECIAL CARA NOME CREAMS

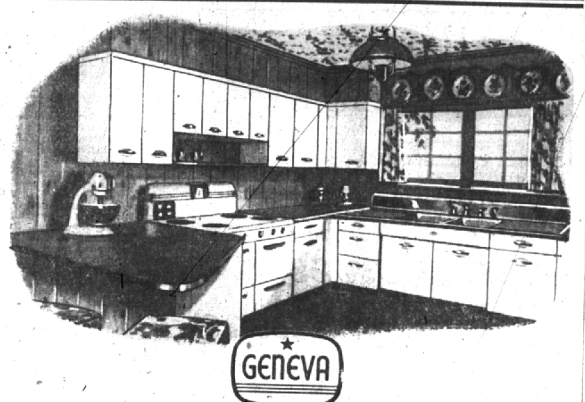
1 1/2 OZ. JAR REG. \$2.20 NOW 1.10

- Cold Cream
- Cleansing Cream
- Special Dry Skin Cleansing Cream

Advertised in LIFE · LOOK · POST COLLIER'S · FARM JOURNAL

SHAIN'S REXALL DRUGS

GOOD HEALTH TO ALL FROM REXALL



Personalized Planning makes your GENEVA Kitchen yours alone!

Want something special about your kitchen? Extra drawer space, maybe? Lots of tall cabinets? Unusual convenience features? Work-saving accessories?

One of the really nice things about a Geneva Kitchen in long-lasting steel is that it can be personalized to your own taste... your own needs... your own working habits. Whatever your ideas, wonderful, work-saving Geneva cabinets, stainless steel sinks and accessories are available to give you the dream kitchen arrangement you've always wanted. To make your kitchen yours alone!

Ask about our expert planning service—which shows you just how your Geneva Kitchen will look. No obligation—come in now, or phone.

GENEVA Personalized Kitchens

CRAIG APPLIANCES, INC.

112 SOUTH WOODWARD PH. MI 4-2525

BODINES

172 N. Woodward, B'ham MI 4-1177

PAUL'S FISH & SEAFOOD MARKET

Also Fresh Poultry & Eggs

1673 S. Woodward MI 4-5734

Pattern Your Shotgun

Any & Every SATURDAY from SEPT. 20 to OCT. 18

Entirely FREE at PARM'S

Learn to use your shotgun to the best advantage!

- Determine your pattern percentage
- Determine the quality of your pattern
- Determine the MAXIMUM KILLING RANGE of your pattern in YARDS.

PARM'S Between 13 & 14 Mile Roads

Open Mon. thru Fri. till 10 p.m. Saturdays 9-5 Sundays 9-1 Phone Lincoln 4-7900

HUNTERS HEADQUARTERS

• GUNS • RIFLES • TRAPS • CLOTHING • SHELLS • DECORS • EQUIPMENT

The Most Versatile **CARPET. In Town**

A distinguished rough-textured carpeting with striking surface interest

A loop pile made with yarns of imported 100% full wool **\$9.95** SQ. YD.

A wave on wave design makes it a two-way proposition—it doesn't clash with other patterns in the room and yet it's dramatic in itself

Glorious Colors

- foam green
- dove gray
- parfait beige
- forest green
- antique ruby
- cocoa

We Give **J.N. Green Stamps**

Harold B. Brown CARPETS and RUGS

2863 Woodward Between 11 & 12 Mile Rds. On the WEST side of Woodward Mon., Thurs., Fri., Open until 9 BUDGET TERMS AVAILABLE Lincoln 2-9895 Jordan 4-6373