

League of Handicapped Sale Held Yesterday At Community House

It was "Christmas Time at the Community House" yesterday when Birmingham Junior

League members manned booths for their annual sale of products made by the League of the Handicapped. Chairman Mrs. Paul McKenney was assisted by Mrs. John Stevenson, Mrs. William Bachman, Jr., and Mrs. Robert Vanderkloot.

WANFASTER SERVICE ON . . .
BLUEPRINTS — WHITEPRINTS
and PHOTOSTATS?
 Try
Multi-Color's Oakland Branch
WHILE YOU WAIT OR PICK UP
AND DELIVERY SERVICE AVAILABLE
MULTI-COLOR OAKLAND BRANCH
 4254 N. Woodward I.I. 2-8770
 MICHIGAN'S OLDEST AND LARGEST REPRODUCTION COMPANY

THUMBNAIL SKETCHES

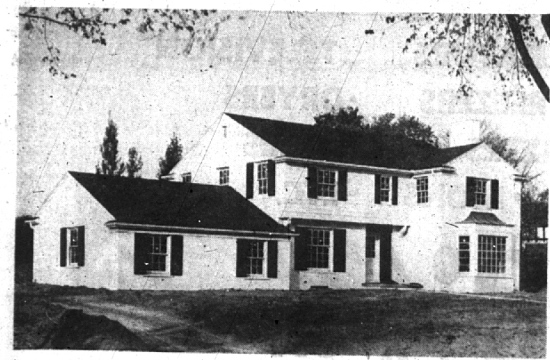


- No. 1. 1950 - built Bungalow. Two bedrooms, tile bath on first floor. Two bedrooms in basement. Oil heat. Storms and screens. Fenced yard. 50-foot lot. Torry School. \$11,750.00
- No. 2 Brick Bungalow, 1942 - built. 2 bedrooms. Tile kitchen. Tile bath. Gas heat. Carpeting. Stove. Storm windows included. Gas automatic hot water. Pierce School. \$12,900.00.
- No. 3 BEVERLY HILLS—Birmingham Schools. 1951-built brick Colonial home. Terrace. Breakfast space in kitchen. Disposal, 3 bedrooms, tile bath, lav. Oil A/C heat. Attractive new grey carpeting. \$21,750.
- No. 4 Brand, spanking new. Brick and frame Colonial. Library. Lav. Breakfast space. 3 bedrooms — 1 bath — \$28,500.00. Or, if you'd rather — 3 bedrooms, 2 baths — \$29,750.00. Disposal. Breezeway. 2 car garage. Adams School.

East side, west side, budget-priced, or luxury. We will bend every effort to satisfy your requirements.

SNYDER KINNEY & BENNETT INC.
 239 S. Woodward Midwest 4-7000

BLOOMFIELD VILLAGE



A WONDERFUL COMBINATION: a beautiful new, well-planned farm-house colonial and an exclusive location. 130 ft. sloping lot on a curved corner overlooking a small parkway.
 There is a fireplace in the living room, Philippine Mahogany paneled den, separate dining room, breakfast room, first floor lavatory. Four bedrooms and two tiled baths up. Basement recreation room. Westinghouse dishwasher and disposal.
 Do permit us to show you this quality built home on this superb site.

WATT, MANUEL & SNYDER, Inc.
 Realtors
 Robert F. Watt 298 S. Woodward
 Ralph Manuel
 M. E. (Shorty) Snyder Midwest 4-6300



MRS. JOHN ROBERT ANDRUS

Something For Everyone Promised At Pierce Fair

Something to see and do every minute is promised by the Pierce PTA when the doors open Friday on the annual Pierce school fair. The festivities will begin at 3 p.m. and continue until 9 p.m.
 Among the attractions planned are a fish pond, games, and a fortune-telling apron with a thousand pockets. On sale will be baked goods, candy and pop corn, Christmas cards, wrappings and gift items.
 Among the rummage and white elephant booths will be a resale shop where items will be sold with

a commission going to the school. At dinner time the cafeteria will serve a complete meal or a carte orders at a minimum cost. The program will close with a variety show in the auditorium at 6, 7, and 8 p.m.
ROOM MOTHER teas for teachers and mothers in recent weeks include a gathering at the home of Mrs. Clarence Manix, on October 15 for the mothers of Miss Brown's morning kindergarten class.
 Miss Bow's afternoon kindergarten mothers were entertained by Mrs. Albert Bell and Mrs. James E. Tobin on October 14. Mrs. Merlyn Holmquist and Mrs. Don Lightner hosted the mothers of Mrs. Beck's second graders on October 15. Miss Terrill's third grade mothers were entertained on October 16 by Mrs. Stanley Kelly and Mrs. Michael Williams. The mothers of Miss Purchase's fourth graders were feted on October 15 by Mrs. Carl Kaloocy and Mrs. Harry Lombacher. On October 16 Mrs. J. Hengelman and Mrs. Donald Goidt entertained the fourth grade mothers of Mrs. Muschella's room in the Hengelman home.

Fried Sweet Potatoes
 Select large potatoes, peel and slice in half inch slices. Put a small amount of grease into a frying pan. Have medium hot, place slices in pan and fry to a medium brown. Have pan covered to create steam. Sprinkle with sugar.

Wears Mother's Veil for Vows

A Spanish lace mantilla worn by Mrs. Karl F. Meyer for her wedding was the tradition piece worn by her daughter, Nancy Catherine, for her Friday evening nuptials.
 Nancy met John Robert Andrus, son of Mr. and Mrs. Charles Andrus of Nassau, N. Y., at the altar of Christ Church Cranbrook to repeat their vows before the Rev. William Norvell. She was given in marriage by her father, Karl F. Meyer of West Long Lake road, Bloomfield Hills.
 Her antique ivory-shaded satin gown was styled with a long train, tight sleeves, and a small collar with a V neckline. The bride wore a single strand of pearls with matching earrings, and carried white orchids on her prayerbook.

PRECEDING HER down the aisle were honor attendant Allira Nason who left her classes at the University of California to be her cousin's maid of honor, and bridesmaids Mrs. Robert Jenkins, Mrs. Robert Place, Dorothy Inglis and Louise Hutchins.
 Miss Nason's cinnamon-colored taffeta gown was cut with a long, bouffant skirt, a princess neckline and cap sleeves. She wore an ivory leaf cap, and carried gold fugi mums.
 The rest of the bridal attendants wore gold taffeta gowns, similar caps, and carried bronze fugi mums. All the attendants wore pearl necklaces and earrings which were gifts of the bride.
 Charles William Andrus came from Nassau, N. Y., to be his brother's best man. Guests were ushered to their seats by Howard

to their Cranbrook road apartment the first of November.
 The bride's going-away outfit was a tailored grey suit with matching coat and red accessories.
Fresh Peach Ice Cream
 2 cups crushed fresh peaches
 2 cups sugar
 1 quart thin cream
 Add sugar to the crushed peaches. Let stand until sugar is dissolved. Stir in cream gradually. Chill and freeze.

Telephone
 Lincoln 2-0553-4
 Jordan 4-6578
Fred Burton Abstract Company
 Abstracts, Title Insurance, Escrow
 23880 WOODWARD AVE.
 PLEASANT RIDGE

HOMER WARREN & CO.
Complete Convenient MORTGAGE LOAN Services
 Use the facilities of our friendly, suburban office for both Conventional and F. H. A. loans on new and existing homes. We cordially invite builders and brokers to inquire about our lending plans and free commitment service.
HOMER WARREN & CO.
 4262 N. Woodward Ave., Royal Oak Phone Jordan 4-6773

When Buying or Selling Stocks or Municipal Bonds—
 Think First of
First of Michigan Corporation
 Member Midwest and Detroit Stock Exchanges
BUHL BUILDING, DETROIT
NEW YORK CHICAGO
 Cleveland Grand Rapids Port Huron Battle Creek Bay City

Storm Sash and Screens
Standard & Combination Available or Made To Order
Combination Doors
Plywood, Glass and Lumber Woodcraft Co.
 1184 Grant St., just South of Lincoln
 Phone MI 4-0424

Enjoy the Comforts of This New Home

 261 West Lincoln Ave. Between Bates and Pierce
OPEN AFTERNOONS OR BY APPOINTMENT ANY TIME
 General Electric Gas A.C. Furnace. Large Kitchen with Disposal and Table Space.
PRICE \$14,450—F.H.A.—TERMS
 Other New Homes
 2220 Yorkshire, \$16,900—3 bedrooms, one floor
 2424 Manchester, \$14,900—1½ story
 1494 Buckingham \$27,500—4 bedrooms, 2 baths, attached garage
Reid-Paterson, Inc.—Builders
 Sales in Charge of
 Carl H. Plumhoff—MI 4-1828 JQ4-6585 Res. VE 5-1839

Before you buy any power tool
See Shopsmith!
 Compare 5-in-1 SHOPSMITH with any power tool at any price. Compare it for accuracy, quality, big tool capacity. See for yourself why SHOPSMITH, a complete power workshop in one compact unit, is America's largest-selling power tool. Come in and ask for a demonstration.
\$189.50
 complete 5-tool unit less motor
 Special ½ hp. motor—\$34.50

- IT'S AN 8-INCH CIRCULAR SAW with up to 48 inches between blade and fence.
- IT'S A 33-INCH WOOD LATHE with 15-inch swing, variable speeds, unique tool rest.
- IT'S A 33-INCH DISC SANDER with miller gauge, locking fence, exclusive disc feed.
- IT'S A 25-INCH VERTICAL DRILL PRESS with 2½ inch chuck, 14 table maximum, production tool features.
- IT'S A HORIZONTAL DRILL PRESS with 4-inch quill feed, depth gauge, unlimited capacity.

SHOP SMITH
Maskill Hardware
 4400 N. Woodward HOURS: 9:00 A.M. to 8 P.M.
 Just a Few Blocks South of 10 A.M. to 2 P.M.
 South of 11 Mile Rd. Closed Wednesday
 Lincoln 2-4700
 Ample Parking Space Available

ROME HILLS Most Desirable Estate

 Own Your Own Lake
 115 Rolling acres including 30 acre tree-lined Historic Cusick Lake and 10 acres of woods. Located only 50 minutes from downtown Detroit on paved highway 2 miles West of Romeo. A winding driveway leads to this spacious 3-bedroom home situated on a hill, it has an 18x24 ft. living room, a natural stone fireplace and other charming features. A scenic view from every window overlooking this year 'round playground. Colored motion pictures of the entire property available upon request.
 Full Price, Sixty-eight Thousand Dollars
STONE REALTY
 105½ South Main Street, Romeo
 Phone 2261