



Book Films, Projectors Available at Library

Baldwin public library has mailed a letter this week to physicians of the area, reminding them that ceiling projectors are available for patients who find holding a book too difficult.

Over three years ago the Lions club gave two ceiling projectors to the library and several books on film to be used with them.

Patients who are flat on their backs read the printed page or view pictures projected onto the ceiling. Miss Jeanne Lloyd, librarian, states that the library has over 70 books on film, including the Bible, stories for children, and fiction, humor and mystery for adults.

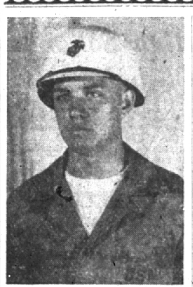
Families of convalescents, as well as doctors, are invited to call the library for further information.

The question that bothers every married man is "Why aren't all bachelors rich?"



ROBERT VESEY, 2509 PEMBROKE, (seated, second from right), discussing Torch Drive plans with other members of the Graphic Arts Guild. The guild, made up of executives of graphic arts industries, will solicit funds among printing plants in the Detroit area.

MEN IN SERVICE



CORPORAL LEE HARDY SHAY, son of Mr. and Mrs. Raymond H. Shay, 1024 Abbey road, recently graduated from the Marine Corps Recruit Depot, Parris Island, S. C. Shay took the course during the summer and will return to Michigan State College to continue his studies in Animal Husbandry of the school.

aviation training at the Naval Auxiliary Air Station, Whiting Field, Fla. He attended Baldwin High school and Georgetown University, Washington, before entering the cadet program at the U. S. Naval Air Station Anacostia, Washington, D. C.

Two Troy Soldiers In NATO Battalion

Two local men are serving with the Headquarters Battery of the 122nd Field Artillery Battalion with the 43rd Infantry Division in Germany.

They are Pvt. Howard J. Casady, son of Mr. and Mrs. Vernon J. Casady, 1641 Rockfield, Troy township, and Dennis R. Bise, son of Mr. and Mrs. William C. Bise, 4077 Rochester, Troy township.

Their division, a National Guard unit from Connecticut, Rhode Island and Vermont, joined the North Atlantic Treaty Organization in Europe last October.

In Japan With Infantry

Pvt. Robert J. Taylor, son of Mrs. Elizabeth Taylor, 55 Soper-ton, and whose wife Nancy, lives at 205 Broadhart, Clawson, recently arrived in Japan and is serving with the 24th Infantry Division. Pvt. Taylor entered the Army in January of this year and received his basic training at Camp Roberts, Calif.



NAVAL AVIATION C A DET LAWRENCE R. HOTCHKISS, son of Mr. and Mrs. Ralph Hotchkiss, 844 Hazelwood, recently completed the first phase of his

BIRMINGHAM BUSINESS BRIEFS

William Manning Joins Detroit Insurance Firm

William W. Manning, 550 W. Lincoln, has recently become associated with the Frazer F. Pomeroy agency in Detroit, as a life underwriter.

Manning is a graduate of the Walsh college, class of 1931, and a member of the Phi Gamma Fraternity. He was active in campus inter-fraternity politics.

General news deadline is 4:30 p.m. each Tuesday.

AAUW Begins Program To Increase Museum's Value to Area Pupils

More than 40 teachers from Birmingham and Bloomfield Hills students for visits to the museum and instruction at the time of the visits.

Having given Cranbrook Institute of Science a \$500 grant for providing special services to pupils of this area, the AAUW is now developing a further educational projects with school officials and

The teachers were made acquainted with the museum. They were told of AAUW plans to offer lesson material to prepare groups of Birmingham and Bloomfield Hills students for visits to the museum and instruction at the time of the visits.

Members of the AAUW education committee are Mrs. Howard B. Green, chairman; Mrs. George Kopp, Mrs. Syver K. Thingstad, Mrs. Allen L. Gornick, Mrs. D. C. Eustis, Mrs. L. B. Sappington and Mrs. Truman W. Eustis.

October 2, 1952 THE BIRMINGHAM ECCENTRIC Page 3

Will Have Displays

When the Great Lakes antique show opens on Oct. 11 for two days in the Detroit Masonic Temple, two Birmingham dealers will have their exhibits among the 58 displays. Elva M. Church, 768 Henrietta, and Graham's antiques, 283 Daines, both feature early American furniture. The show will also include heirlooms, glass and china.

NO HUNTING — NO TRIPPING signs may be purchased at the office of The Eccentric. (30)

LOOK GO EVERYWHERE IN OLDMAIZE Trotters

Handsome, dependable, they mix happily with practically your entire wardrobe! Fashioned with "old school" pride in craftsmanship, they can "take a beating" yet continue to radiate a kind of informal elegance adored by the young and young-in-heart!

True Moccasin Handsewn Vamp Originals by Oldmaize Trotters.

9.95 very flexible here while you walk

Jacobson's
SHOE SALON STREET LEVEL

for outdoor protection, it's **THE QUILT-LINED JACKET**

Zelan-treated for water-repellency, our poplin zip-front fitted jacket is a top requirement for any of your out-of-door plans when the temperature drops.

Collared with mouton-processed dyed lamb. Taupe, red, green or navy. Sizes 10 to 18.

19.95

Jacobson's

Vanity Fair permanently pleats nylon tricot

in a lavish, luxurious manner to highlight the sculptured beauty of these figure-fitting slips... yet they're so reasonably priced! Left: White nylon tricot, pleated at the bust sections and bottom flounce. Sizes 32 to 38. Right: White nylon tricot, pleated at the top, ruffled at the bottom. Sizes 32 to 38.

Left: 8.95
Right: 6.95

Jacobson's
LINGERIE PARKING LEVEL

Jacobson's

"chapeau" most exciting hosiery color of the season!

It's a blushing beige with copper undertones, created to echo and intensify the warm new reds, the sable browns, the new blues and blue-and-black mixtures. You'll wear it as you do a striking hat, to highlight a whole costume... "Chapeau" ... in your very own, perfect-fitting Belle-Sharmeier Leg-size! 1.35 to 1.75 a pair

Jacobson Exclusive

A NEW "ACCESSORY SHADE" IN...
BELLE-SHARMEIER
STOCKINGS IN YOUR PERSONAL LEG-SIZE

brev (purple edge) for slender or small legs. Size 8 to 10 1/2	modite (green edge) for average size legs. Size 9 1/2 to 11	duches (red edge) for full, longer legs. Size 11 to 11 1/2
--	---	--