

# YES!

## There's A Home For You Here

Come with us and inspect any and all. And - once your requirements are known to us, we can also suggest other homes to fit your needs.

THE Birmingham-Bloomfield Hills District—with its lakes—hills—high altitude—superb schools and perfect outdoor life facilities is indeed one of the most beautiful residential communities in all America. Splendid automotive highways—rapid transit trains, and frequent bus service to downtown Detroit, all are factors in constantly bringing an ever-increasing number of fine families to this healthful suburban community.

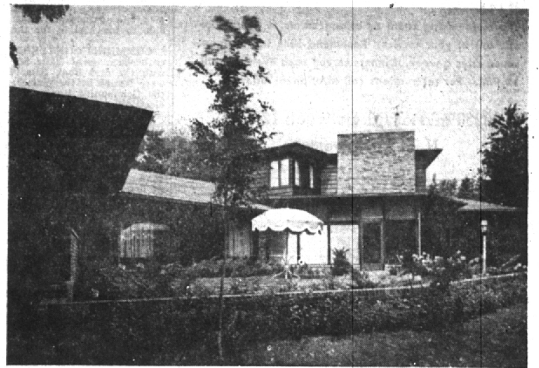
the symbol of choice  
**SUBURBAN PROPERTIES**  
 visit  
**SNYDER KINNEY BENNETT**  
 239 So Woodward  
**BIRMINGHAM**



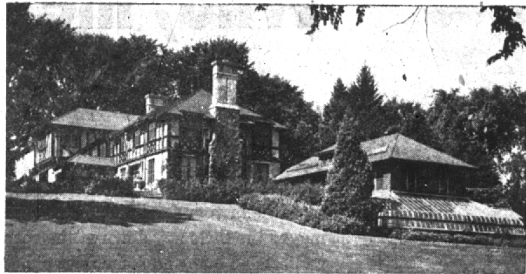
Enjoy Happy Contentment near "The Town That Time Forgot". 3 bedrooms, 2 baths, huge porch and first floor Activities Room. Nothing to buy here. Over an acre for privacy.



In the heart of Birmingham on the west side. Immediate access to Detroit bus. This 3-bedroom Colonial is fully equipped with screens, storm sash. Finished game room with fireplace, 2-car garage. Beautiful outlook onto Rouge River. It's a buy—only \$24,750.



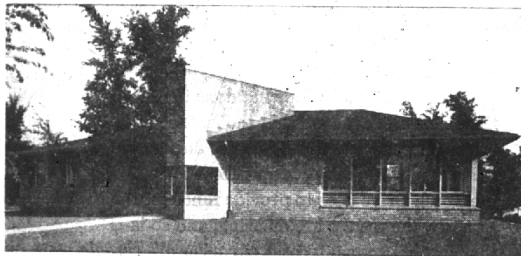
Contemporary indeed. This elegant home in the heart of Bloomfield Hills is perched on 5 acres, perfectly landscaped. Stream, 2 first floor bedrooms, 2 baths. Panelled library. Bedroom and bath up. Innumerable extras. Super first floor Activities Room. Has both a car port and garage.



LAKE ANGELUS. A perfectly gorgeous lake for fishing, sailing, swimming. Magnificent setting for this exquisite home. Year-round, of course. Berkeley and Gay panelled living room. Cost over \$700,000. Now only \$75,000. Estate liquidation.



Here linger nostalgic memories of the "Old South". On Woodward at Lone Pine Road, it's suitable, of course, for private use. BUT, you can convert it to a 4-family apartment. Establish it as an investment with income and get a fine "suite for living" for yourself.



MODERNE is the theme of this unusual home in the Piety Hill sector of Birmingham. Splendid view in three directions including Quarton Lake. Unusual floor plan to intrigue you. Near Holy Name parish.

Completely Comfortable you will be in this home for a small family. 2 bedrooms. Wonderful game room. Inviting porch. Commuter station nearby, also school.



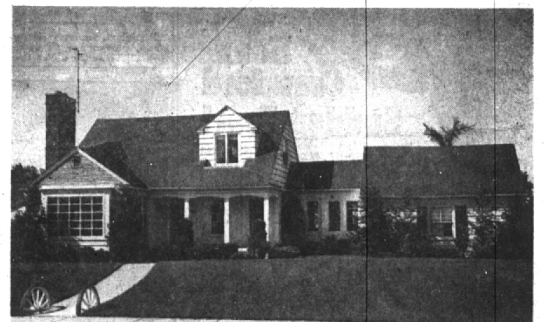
Beverly Hills is the locale for this intriguing Story-and-One-half Home. Served by Birmingham Schools. (Bus at your door).



Typical of a new community of fine homes is this one in "Fairfield" right in the heart of Birmingham. Homes here offer a wide variety from \$21,500, to \$26,500. Ranch Homes, Colonial, Monterey design, 6-rooms, others with library. Close to schools.



This traditional Colonial is in Bloomfield Village close enough to Quarton School and our new Three-Million Dollar High School. 3 bedrooms, 2 baths. Reduced to \$29,900.



On a dignified, quiet, tree-lined street is this attractive home. 4 large bedrooms, 2 baths. In this fine neighborhood is a "heap of good living". Near Adams School and rapid transit.

**SNYDER KINNEY & BENNETT**

Birmingham-Bloomfield Hills Properties

239 SOUTH WOODWARD AVENUE, BIRMINGHAM, MICHIGAN

(Detroit) JJordan 4-6565

Birmingham MI 4-7000