

## 'Country Living' Is Theme Of Pi Phi Arrowcraft Sale

"Country Living", exemplified throughout Birmingham in such colorful touches as lamps on posts, Cape Cod fences, and early American interiors, will be the theme of Pi Beta Phi's annual Arrowcraft Sale and Tea.

Localities will take care of a goodly share of their Christmas shopping lists at the October 25 event which will be held from two until five o'clock at the Community House.

On hand will be hand-woven articles such as table linens, baby bonnets, jackets, afghans, baby blankets, baskets and hearth brooms, all made by the mountain people in the Great Smoky Mountain country around Gatlinburg, Tenn.

PI BETA PHI has maintained the Settlement School at Gatlinburg as its national project since 1912. Through support from active chapters and alumnae clubs, the group is able to teach the people who live in the area to become self-supporting by learning to weave articles for sale throughout the country.

In addition to this specialized training, the mountain children attend the country school in that district which is provided and staffed by Pi Beta Phi.

Health facilities are made available to the people through a health center and nurse at the Settlement School.

MRS. HENRY MERKER will preside at the tea. She will be assisted by Mrs. Arthur Bull and Mrs. John Townsend.

## Puppeteers Meet To Discuss Cast, Stage and Script

Plans for the new season will be discussed at October 21 meeting of the Birmingham Puppeteers. Members and anyone interested in puppetry are asked to attend the 8 p.m. meeting at the home of Mrs. Donald Howarth, 687 Oakland.

The cast has started rehearsals for the coming marionette show, "Glas and the Talking Horse," which is scheduled for December performances for several charitable organizations.

Those working on the production include Mrs. Michael Remondino, Mrs. James Slayden, Mrs. Merrill Anderson and Mrs. Frank Mosher.

## Party Honors Engaged Pair

FRANKLIN—Bride-elect, Dr. Robert Gerlach, will be the guest of honor at a supper party Saturday night at the Captain's Lane home of Mr. and Mrs. P. George Gerlach, parents of the prospective groom.

Nancy is the daughter of Mr. and Mrs. Edward Lutz of Detroit. She and her fiance are both graduates of the University of Detroit.

THE WEDDING will take place at the Church of the Precious Blood in Detroit on the morning of Saturday, October 25, and will be followed by a reception at Dearborn Inn.

After their honeymoon, the couple will make their home in Grosse Pointe.

## WITH THE Collegians

Mary Hofbauer, daughter of Mr. and Mrs. Hofbauer of Lathrup road, has been pledged to Delta Zeta at Albion College. Formal pledging took place at an October 9 dinner. Mary, a freshman, is active in the band and the Albion College Players.

John D. McQuigg, 1395 Willow Lane, and Hisham, Jr., Washington, Jr., 308 Waddington road, have both been appointed to serve on the board of control of publications, and the Student-Faculty Council at Denison University, Granville, Ohio, where both are seniors.

Students enrolled in DePauw University, Greencastle, Ind., include Frank Joseph Staroba of Northwinds avenue, and Peter E. Trees of Oak Hill.

Peter E. Trees, son of Mr. and Mrs. Robert C. Trees of Oak Hill, has been pledged to Kappa Psi at DePauw University where he is a freshman.

Dave Williams of Adams road is newly-pledged to Kappa Sigma at the University of Wyoming, Laramie, Wyo.

William R. Yaw, Jr., is among the entering freshmen at the Pennsylvania Institute of Business Administration, Wileysville, Mass. He is the son of Mr. and Mrs. William R. Yaw of Wabek Farms, Bloomfield Hills.

Ken Wilson, son of Mr. and Mrs. Paul R. Wilson of Puritan road, and James H. Paterson, son of Hamilton H. Paterson of Westwood drive, were recently pledged to Delta Upsilon at Williams College, Williamstown, Mass. Both are June graduates of Cranbrook School.

Margie Thayer, Michigan State College senior, spent last weekend at Delta Upsilon at Williams College and Mrs. J. W. Thayer of California drive.

Nancy Beck, Michigan State College junior, has been formally initiated into the membership of "Green Splash", women's swimming honorary at MSC. In addition to sponsoring teams in speed and synchronized swimming, the group presents an annual aquatic pageant and is hostess to the intercollegiate and AAU meets at the college. Nancy is the daughter of Dr. Otto Beck of Fairfax road.



PAULINE BEH

## Shain Class Opens Season October 28th

The 33-34 season of the Ruth Shain class in International Relations will open at ten o'clock Tuesday morning, October 28, at the Community House, and meet each Tuesday throughout the winter.

The class, sponsored by the AAUW and the Birmingham Women's Club, is a Birmingham tradition of long standing and is open to all interested. Membership included all adjacent areas, with participants often coming from Detroit and Lapeer.

THE SEASON will get underway on a two-fold note, Mrs. Shain, who has conducted the sessions since their inception, will report on the annual New York Herald Tribune which she will attend, and relate her experiences during her recent summer abroad.



Early winter nuptials are in the offing for Nancy Truman

NEED SOMETHING FOR YOUR HOUSE? Then locate it by reading or using the Classified Ads in The Eccentric each week.

## For The Discriminating Home Seeker

Who wants finest architecture.—(Nationally known architect designed and supervised construction.)

Who wants spaciousness in Birmingham.

(The horizon is distant, the sunsets beautiful, the sky ever-changing; there is a vista of miles of rolling country from the living room, west windows and the summer outdoor "living room". The setting, on an elevation, and landscaping provides country quiet and privacy. The scenic Birmingham Country Club adjoins professionally landscaped garden.)

Who wants custom construction and quality materials. (Erected in 1936, it gracefully blends architecture, materials and functional planning so it always breathes "Home" to the family and is immediately restful and relaxing to friends.)

AUTHENTIC ENGLISH COLONIAL

There is 2544 square feet, consisting of: Second floor, three bedrooms and bath with stall shower; first floor, two story entrance hall and powder room, living room with fireplace, dining room, kitchen, breakfast nook, and side entrance half below grade, 32 x 14 1/2 recreation room with fireplace, laundry room and furnace room.

In addition, a two-car garage and roofed outdoor "Living room" cover 300 square feet.

The lot, comprising two-fifths acre, is beautifully landscaped and includes bearing apple, plum, peach, cherry and pear trees.

The home itself is valued at \$28,500, and to emphasize value compare the square footage mentioned above to equivalent quality new construction cost. The very unusual lot is valued at \$6,500, for a total price of \$35,000.

Inquiries should be addressed to: Home Owner, Box 931, The Eccentric, Birmingham, Mich.

## Truth Told In Oklahoma

From Enid, Okla., comes the announcement of the coming marriage of Lois Hobart and localite Peter Sidway. Their engagement has been revealed by the bride-elect's parents, Mr. and Mrs. Henry M. Hobart of Enid.

Peter, son of Mr. and Mrs. James Sidway of Wing Lake road, is completing his air cadet's course at Vance Air Force Base, and will receive his wings and second lieutenant's commission on October 25.

THE WEDDING will take place the following Monday, October 27, in the Christian Church in Enid.

Miss Hobart is a graduate of Phillips University. Her fiance attended Hamilton College, Clinton, N. Y., before entering the Air Force.

**INSURANCE - BONDS THE BIRMINGHAM AGENCY**

INSURANCE FOR EVERY NEED

Phone MI 4-2422

106 S. Woodward - Birmingham

Chas. B. Randall Oscar P. Peterson

AFTER WE SELL we SERVE

## CLUB CALENDAR

- October 16—Alpha Gamma Delta . . . . . potluck dinner . . . . . (Walnut Lake) . . . . . 6:30 p.m.
- October 16—MOMS club . . . . . Baptist Church . . . . . 8 p.m.
- October 16—Newcomer Club . . . . . luncheon and fashion show Community House . . . . . 12:15 p.m.
- October 16—Oakland Hills Country Club . . . . . Bridge luncheon and fashion show . . . . . 12:15 p.m.
- October 16—Pierce PTA meeting school auditorium . . . . . 8 p.m.
- October 16—St. Colette's Guild . . . . . "Hallowe'en party" . . . . . Mrs. H. B. Royce (Quarion rd.) . . . . . 8 p.m.
- October 16—St. Elizabeth's guild Mrs. Ronald Houshville (1516 Muir) . . . . . 8 p.m.
- October 16—Mills College Alumnae . . . . . luncheon meeting . . . . . Mrs. Benjamin Wilson (Detroit).
- October 20—Alpha Xi Delta . . . . . Mrs. James Hogan (1274 Westwood) 8 p.m.
- October 20—Rotary Arms . . . . . William DeGraft (381 Fairfax road) 1 p.m.
- October 21—Alpha Phi . . . . . Founders' Day meeting . . . . . Mrs. R. J. Coughlin (1488 Pierce street) . . . . . 8 p.m.
- October 21—Bham Puppeteers . . . . . Mrs. Donald Howarth (687 Oakland) 8 p.m.
- October 21—Oakland County PTA Council . . . . . Fantine Lake School . . . . . 8 p.m.
- October 21—Present Day Club . . . . . card party . . . . . Mrs. Elmer Housworth (1262 Smith) . . . . . 8 p.m.
- October 21—Pythian Sisters (no. 94) . . . . . Community House 8 p.m.
- October 21—St. Veronica's guild 8:30 a.m. Mass followed by breakfast at home . . . . . Mrs. Anthony D'Agostino (984 Rivenoak)
- October 21—Shrine High Mothers' Club . . . . . regular meeting . . . . . school auditorium . . . . . 2 p.m.
- October 22—Bham Country Club Fall fashion show and luncheon . . . . . noon.
- October 22—Junior League . . . . . League of the Handicapped Sale . . . . . Community House . . . . . 10 a.m.—9 p.m.
- October 22—OES . . . . . Installation of officers . . . . . Masonic Temple . . . . . 8 p.m.
- October 22—Quarion PTA . . . . . box supper, meeting . . . . . 6:45 p.m.
- October 23—Gamma Phi Beta . . . . . Mrs. H. Everhardus (164 Washington boulevard) . . . . . 8 p.m.
- October 23—Kappa Alpha Theta . . . . . Luncheon and business meeting . . . . . Mrs. H. B. Stubbs (Oxford road) . . . . . n.p.m.
- October 23—Kappa Delta . . . . . Founders' Day dinner . . . . . Whittier Hotel (Detroit) . . . . . 6:30 p.m.
- October 23—Pi Beta Phi Arrowcraft Sale . . . . . Community House . . . . . 2:45 p.m.

## Holiday Vows Planned By Pauline Beh

A Christmas holiday wedding is being planned by Pauline Frances Beh and Robert Sandhorg. Their troth has been revealed by the bride-elect's parents, Mr. and Mrs. Joseph C. Beh of Lakeview road.

Miss Beh attended the University of Portland and is now completing her last semester at Michigan State Normal College. She is a member of Alpha Sigma Tau.

THE PROSPECTIVE groom attended the University of Portland and Oregon State College of Education.

Following their nuptials the couple will make their home in Portland where the bride, a student in occupational therapy, will complete her internship.

## Alpha Phi View Films At Founder's Meeting

Films of the national Alpha Phi convention in Virginia Beach, Va., will be shown at the local group's Founder's Day meeting at the home of Mrs. R. J. Coughlin, 1488 Pierce street. The meeting will begin at eight o'clock Tuesday evening, October 21.

Mrs. George Cruickshank and Mrs. William Bird will be co-hostesses.

## Birthdays, anniversaries, guests, births, parties are all news—call the society editor then.

Birthdays, anniversaries, guests, births, parties are all news—call the society editor then.

## Garages

COMBINATION STORM SASH  
OVER 300 GARAGES IN THE BIRMINGHAM AREA  
It pays in satisfaction to deal locally—Costs no more

**STUART E. SHEILL**

1690 E. MAPLE BIRMINGHAM FHA Terms

Phone MI 4-3713

## WHISPERING WILLOWS



Graceful willows mirrored in a peaceful pool . . . exquisite beauty each day of the year . . . a lovely one-floor home for year 'round enjoyment. Result: peaceful perfection!

YOU'LL ENJOY THE:

- Spacious Living Room . . . massive fireplace
- Sunny Den or TV Room
- 2 oversized Bedrooms . . . walk-in closets . . . 2 Tiled Baths with built-in features.
- Intiguing Kitchen . . . warmly polished Birch and Formica
- Breakfast Bar that's the neatest trick of the week . . . Dishwasher and disposal.
- First Floor Studio and Activities Room . . . Botanical alcove . . . entire walls of storage cupboards.

Superb construction and craftsmanship . . . magnificent views from every room . . . freedom of line marks its artistry. A deft combination of beauty and flawless skill. Very low taxes . . . Birmingham Schools. Let's see it today!

CALL

**MAX BROOCK INC.**

REALTORS

ESTABLISHED 1895

300 S. Woodward Ave. Midwest 4-6700

## HOMER WARREN & CO.

Use the facilities of our friendly, suburban office for both Conventional and F. H. A. loans on new and existing homes. We cordially invite builders and brokers to inquire about our lending plans and free committed service.

**HOMER WARREN & CO.**

4262 N. Woodward Ave., Royal Oak Phone Jordan 4-6773

WANT FASTER SERVICE ON . . .

**BLUEPRINTS - WHITEPRINTS and PHOTOSTATS?**

Try

**Multi-Color's Oakland Branch**

WHILE YOU WAIT OR PICK UP AND DELIVERY SERVICE AVAILABLE

**MULTI-COLOR OAKLAND BRANCH**

4254 N. Woodward LI. 2-8770

MICHIGAN'S OLDEST AND LARGEST REPRODUCTION COMPANY

## A Luxury Becomes a Necessity . . . at LOW COST! even soft

SAVE With This New Improved Water Softener!

\$8.55 Per Month. No Down Payment.

Soft water is a necessity in every home now . . . it is at the home of the future. Work. You, soft water actually helps clothes wear up to 33-1/3% longer. Enjoy soft water today . . . call us now.

A Premium Quality Softener

**MICH. EVER-SOFT SALES CO.**

158 N. TELEGRAPH RD. PONTIAC, MICH. FE. 2-2920 FE. 2-0348



Attractive Brick & Stone Ranch

Large lot 130 x 140. Beautiful trees

3 large bedrooms — 2 tile baths Storms & Screens — 2 1/2 car garage

Living room 28 x 15.6 with fireplace Large attic. Dark room.

Library with fireplace Carpets and curtains included.

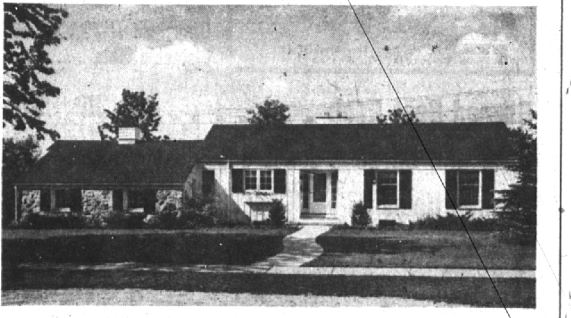
Shown by appointment

**WALSH, JAMES & WASEY Co.**

REALTORS

431 S. Woodward, Birmingham Midwest 4-6500 or Detroit phone Jordan 4-6033

## R. S. V. P.



You are cordially invited to make this delightful home yours.

MOTHER—you will extol the convenience of the built-in Thermador stove.

FATHER—you will appreciate the solidity of its construction. 1949-built. 3 bedrooms (or 2 bedrooms and library), tile bath, plus separate lav. Screen Porch. Good closets. Oversize 2-car garage. Attractive 120-foot yard. Green twist carpeting. Everything in prime condition.

Call us today.

**SNYDER KINNEY & BENNETT**

INC.

Birmingham-Bloomfield Hills Properties

239 SOUTH WOODWARD AVENUE, BIRMINGHAM, MICHIGAN (Detroit) Jordan 4-6565 Birmingham MI 4-7000