

"Personality" GLASSES

Eye Examinations
Glasses Fitted

WE OFFER FRAMES THAT
FLATTER FACIAL FEATURES

Norman R. Becker, O.D.
And Staff

Formerly associated with Square Deal, Miller, Detroit, in Optical Dept. as Manager and Optician.

Complete Lens Grinding Shop on our Premises.

129 E. Maple MI 4-0644

Novelty Wood Items At Franklin Bazaar

There will be, or should be, no shortage of housing for the dolls in Franklin after the annual bazaar on Nov. 8. Sponsored by the sewing and friendly circles of Franklin Community church, the sale will feature doll houses and furnishings which have been made by the men of the congregation.

Small barrels have been converted into attractive little houses by the various workers, while others have concentrated on making furniture which is planned for them.

Cooperating with the church women, the men have also made many items of furnishings for homes, including pine shelves and a cobbler bench. Numerous novel-

ty items of hand rubbed driftwood will also be offered.

The ladies of the church, under the joint chairmanship of Mrs. Ralph Woodburn and Mrs. Eugene Kelly, have planned a snack bar which will be open throughout the day to serve shoppers.

HOME MADE candy and other foodstuffs, along with Christmas fruit cakes will provide the wares for one booth. Another will have a stock of aprons and fancy needlework. Special emphasis is being placed on handmade cowboy shirts being one of the foremost items.

There will be aprons for mother, daughter and her doll, as well as dolls and doll clothes.

In the needlework and fancy goods booths, the ladies this year adopted the theory of making items which they, themselves, would like to receive as gifts for their own homes or personal use.

In keeping with the season, the circles will offer Christmas cards and wrappings, table decorations and other items for the holiday season.

The sale will be held in the Community Hall from 9 a.m. to 9 p.m., Mrs. Woodburn said.



MRS. EUGENE KELLEY MARTHA GARDNER MRS. C. W. GARDNER
Novelty dollhouses get inspection prior to sale
(Eccentric Staff Photo)

GARDEN TIPS FOR NOVEMBER

1. Hardy chrysanthemums may be cut back to a few inches—or left standing to catch the snow.
2. Start PAPERWHITE NARCISSUS about the middle of November for Christmas bloom.
3. Put a little covering on exposed perennial beds IF the ground freezes hard. As a rule, however, do this in December.
4. Wrap trunks of newly planted shade trees with TREE-WRAP to prevent sun scald.
5. Spray or paint young fruit and ornamental trees with PETER RABBIT REPELLENT.
6. Put garden debris (except woody stems and corn stalks) on compost pile and salt it down with ACTIVO or ADCO.
7. Get your MARSH HAY, STRAW or BUCK-WHEAT HULLS for use later.
8. Enjoy the beauty of your tulips and daffodils in the spring by putting on BONE MEAL now.

McCLELLAN-BALL CO.

YARD SUPPLIES FARM KENNEL
BIRMINGHAM, MICHIGAN
Phone MI 4-4133 159 Brownell St.

SUNDAY SERMON TOPICS

Redeemer Lutheran.
The Rev. Theodore Wiggazzer will preach on "Is Your Religion Adequate?" at both the 9 and 11 o'clock services Sunday morning.

First Baptist.
"All Love Excelling" will be the sixth in a series of sermons by the Rev. Emil Kontz on the theme "Higher Levels of Happiness," based on the Beatitudes of the New Testament. The mid-week topic Wednesday evening will be a continuation of "Prophecy Preach to the Present." The current subject will be "The Preacher to Displaced Persons."

Christian Science.
The true story of the creation is man is discussed in the "Lesson Sermon," under the title, "Adam and Fallen Man" to be read Sunday morning. The text, Romans, 5:17, "If by one man's offense death reigned by one; much more they which receive abundance of grace and of the gift of righteousness shall reign in life by one, Jesus Christ."

First Presbyterian.
Duplicate services at 8:30 and 11 a.m. will be highlighted by the Rev. W. Glen Harris, Ph.D., preaching on "When There Is No Peace," based on Jeremiah 31:4. "They have healed also the hurt of the daughter of my people slightly, saying, peace, peace; when there is no peace." Vesper services will be on I John, the topic, "The Adversary of the Church," at 7 p.m., following the 6 o'clock supper.

NEED SOMETHING FOR YOUR HOUSE? Then locate it by reading or using the Classified Ads in The Eccentric each week.

Japanese Bishop To Speak Sunday At Christ Church

The Rt. Rev. Michael Yashiro, presiding bishop of the church in Japan will be the guest speaker at Christ Church Cranbrook at both the 9:30 and 11:15 services Sunday morning.

Bishop Yashiro, who took his theological training in England, is presiding bishop of Nippon Sei Ko Kai, the Holy Catholic Church in Japan. Youngest presiding bishop in the whole Anglican Communion, he was asked to come to America as guest of the general convention held in Boston last September.

He spent a year as vicar of a school in England and upon his return to Japan spent 10 years in one of that country's oldest and largest churches. He became assistant bishop of Kobe in 1940 and for many years opposed the imperialistic philosophies of Prime Minister Hideki Tojo, was arrested and jailed.

Later he was drafted into the army and served as an officer with the occupational forces in Korea and Manchuria, never losing touch with the church during the whole time.

He has held his present office since 1947, working for the 10 Japanese diocese and the bishop who administers them.

News copy submitted early necessarily is given preference over late items. So the "Early Bird" usually gets the space.

Don't Miss The AUCTION SALE EVERY TUESDAY 7:00 P.M.

At the L & S Auction House, 3445 Auburn Road, 1 mile east of Auburn Heights on M-59. Merchandise of all kinds, new and used furniture, appliances, radios, TV sets, tools, antiques, produce and eggs.

Also will sell anything you have for sale: Phone FE 7-0783 or OLIVE 2-6711.

Ray Warner Auctioneer.

Complete Stock of new furniture at bargain prices. TERMS. Open 6 days a week, 9:30 to 5:00 for retail sales and to receive consignments. For special announcements listen to our radio broadcast over WCAR between 4:30 & 5 P.M. Tuesday, Thursday and Saturday.

"20th CENTURY" HEATING FOR EVERY HOME

Flashheat ELECTRIC HEATING

Safe • Fire safe, can't burn
Clean • No dust, smoke or fumes
Quick • Direct, instant heat
Convenient • Little or no maintenance

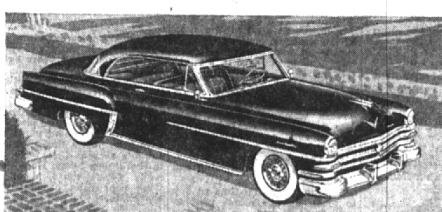
CONTINENTAL Flashheat "the easy-chair heating system" For Prime or Auxiliary Heating Call or write for details

GLASHEAT, INC.
15905 James Couzens Hwy.
Detroit 21, Mich.
Phone UNiversity 2-9521

SALES REPRESENTATIVES WANTED FOR THIS AREA

NOW ON DISPLAY!...

AMERICA'S FIRST FAMILY OF FINE CARS



The brilliant new Chrysler New Yorker Deluxe Newtop



The majestic new Chrysler Custom Imperial 4-door Sedan



The beautiful new Chrysler Windsor Club Coupe

A stunning new mood in Highway Fashion!

Here is without question the finest array of motor cars ever presented to the American motoring public... the most beautiful Chrysler of all time... creating a glamorous new Highway Fashion for 1953... engineered with all of the perfection for which Chrysler is famous!

Here indeed is America's first family of fine cars, offering all the most-wanted new car features in safety, comfort, and performance. There's the beautiful Windsor line... the lowest priced of all Chryslers and a true "family favorite." There's the brilliant New Yorker... considered by many the most sparkling performer on the road today. And there's the Imperial... custom-built for those who must have the absolute best. All in a wide variety of body models, colors, and interior trim combinations!

Yes, there's something here for everybody... and we feel sure there's something wonderful here for you. Why not visit us soon and look these beautiful new cars over... you'll get more than a hint of how wonderful it feels to be a Chrysler owner!

The beautiful 1953
CHRYSLER
the safest car you can drive

MIKE WELCH, Inc.

479 South Woodward BIRMINGHAM

Your best buy in cooking is an automatic

ROPER GAS RANGE

AMERICA'S FINEST GAS RANGE

AUTOMATIC CLOCK TURNS OVEN "ON AND OFF" WHILE YOU'RE AWAY

Compare Costs and you'll find that you can own a new automatic gas range for LESS than other automatic ranges. You can also have it installed cheaper and you can cook in it for LESS.

And this amazing new ROPER GAS RANGE is TOPS in quality, beauty and dependability. Here's every cooking advantage you could desire—SPEED, ECONOMY and GLORIOUS NEW FREEDOM from cooking cares. Yes, this dependable, high quality ROPER range will thrill you. SEE IT... COMPARE IT!

IT LIGHTS WITHOUT MATCHES • BAKES WITHOUT SMOKING COOKS WHILE YOU'RE AWAY • SEE IT TODAY

You can buy a new ROPER for AS LITTLE AS **\$172.00**

CHECK OUR TRADE-IN OFFER FOR YOUR OLD RANGE AG-2884-20

CONSUMERS POWER COMPANY

D'HAM ECCENTRIC
November 4, 1952

GLENN WING POWER TOOLS

- Atlas • Delta
- Porter-Cable
- Shopsmith
- DeWalt Saws

1437 SOUTH WOODWARD
BIRMINGHAM, MI 4-0444
Daily 8 to 6:00—Fri. 8 to 8:00

—ADVERTISEMENT—

PET SHOPS

YELLOW PAGES TELEPHONE DIRECTORY

To find the products you need—use the **YELLOW PAGES** OF YOUR TELEPHONE DIRECTORY