

TREE SURGERY

TREE TRIMMING AND REMOVAL

10% Off On All Tree Trimming

Fully Insured and Guaranteed Work

FREE ESTIMATES

Midwest Tree Co.

1509 Pierce, B'ham MI 4-7024

What's Being Planned By BIRMINGHAM CHURCHES

Lutheran Redeemer
Mrs. Gertrude Groves of Grosse Pointe will speak at the 8 p.m. meeting of the Ladies' Missionary group on her recent trip to Europe and Displaced Persons. Hostesses will be Mrs. Gus Shesha, Mrs. Craig Miller, Mrs. Elizabeth Anderson, Mrs. Otto Borchert and Mrs. Harold Helgesen.

Unitarian
Church school classes for children 5 to 15 are held each Sunday morning at 10:30 at the Apple Orchard, 459 South Adams, under the direction of Mrs. Alice Parnie. Robert Dearth, Fellowship president, conducts adult classes at the same time. John Cowen is director of religious education.

Christ Church
The Rev. G. Paul Musselman, rector of the historic Maritime church, superintendent of the Detroit Episcopal city missions and executive director of the department of Christian social relations for the diocese, will address the luncheon meeting of the Women's Auxiliary on Nov. 11.

First Presbyterian
A hint of Christmas will highlight the program of the Nellie Clisbe guild meeting Nov. 10, when Mrs. G. P. Hogg presents "The Birds' Christmas Carol." The meeting will be at 8 p.m. at the home of Mrs. Howard Bell, 1815 Warwick.

Walther League Sets Toy Sale Nov. 13, 14

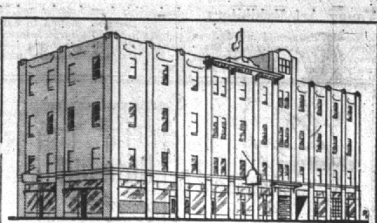
Toy sale will blossom in the Church's salesroom, 829 South Woodward, Nov. 13, 14, when members of the Redeemer Lutheran church Walther League hold their second annual sale.

The program of collecting and repairing discarded, broken toys started several months ago. Since then hundreds have passed through the hands of these boys and girls undergoing extensive repairs and refinishing.

The group, ranging from 13 to 16 years, have handled bikes, tricycles, airplanes, doll houses and furnishings, games and just about every type of toy on the market. According to Mrs. Roy B. Brown, whose basement has provided workshop quarters for many of the activities, some of the items came in as almost total wrecks and now look "just like new."

"THEY HAVE HAD A wonderful time working as a group on a central project," Mrs. Brown said, "and are getting a deep personal satisfaction out of it. They know they are helping their church, helping themselves and offering the public excellent toys at a low price. The sense of having done something of value is great in each and every one of them."

Mrs. Brown said that the \$300



You Are Cordially Invited to Inspect
OUR MODERN STORAGE
Built Especially to Store Household Goods

LOCAL AND LONG DISTANCE MOVING

Gaukler Storage Co.
9 Orchard Lake Ave., Pontiac, Mich.
Dial "O" ask for Enterprise 6305

The entertaining season is coming up!

Now Is The Time To Do Your
INTERIOR DECORATING
for the
HOLIDAYS

Add a note of freshness and change to each room with wallpaper that is coming in daily in our

1953 Wallpaper Books

While you can still open your windows and add an additional sparkle by doing

Interior Painting

- FLATS • SEMI-GLOSS • ENAMEL in all shades from our color bar

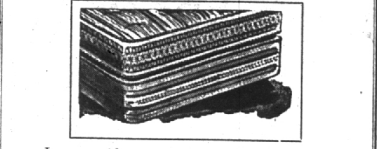
FOR A FAR REACHING JOB OF REDECORATING COME IN AND SEE OUR NEW BOOK OF Wallpaper and Matching Fabrics

And just as a reminder before you put up the storm shades—give them a protective coat of outside paint.

BIRMINGHAM PAINT GLASS & WALLPAPER CO.

335 E. Maple Midwest 4-3737

Your Old Like New Again



Longer, wider, narrower... softer, firmer... just the way YOU want it! Call FE 2-7695 in the morning, we'll return your mattress that SAME day—like new! You'll be amazed at the low price.

• Pillows Renovated • New Custom-Built Mattresses

OXFORD MATTRESS CO.
77 Years in Oakland County
Phone—Dial O ask for Enterprise 6510
FOR ESTIMATES
40 E. PIKE ST. PONTIAC FE 2-7695

Southfield Methodist Women Sponsor Bazaar

Another aid to Christmas shoppers will be the autumn bazaar which the women of Southfield Methodist church will hold Nov. 8.

Open from 11 a.m. to 8 p.m., the affair will have a country store, in charge of Lillian Blacklaw; baked goods with malachite Ruth Lenahan and Alice Johnson and home made candy sold by Dorothy Huggill.

The fancywork booth will be in charge of Geneva Nagle and Mildred Glascock and aprons sold by Edith Tolman and Mable Brown. In the merchandise mart Sally Rann with the kitchen booth directed by Anna Stillwagon. Luncheon will be served from 11 to 2:30, dinner from 5:30 to 8 p.m. The entire affair will be directed by Evelyn Folsom.

Newspaper copy submitted early necessarily is given preference over late items. So the "Early Bird" usually gets the space.

HEARING AIDS and BATTERIES
for ALL MAKES
Make inquiry at Our Store and Get All of the Details
MI 4-2121

SHAIN'S DRUG STORE
105 W. Maple

POTTER Moving & Storage Co.
136 Brownell
Phone MI 4-6162

SPEEDWAY FUEL OIL

No. 1 Oil - 14.6c per gal.
No. 2 Oil - 13.6c per gal.

Prompt Metered Delivery Service

Protective Contracts Call Vinewood 2-2700

SPEEDWAY PETROLEUM CORPORATION
301 So. Fort St. Detroit 25, Michigan

Call Midwest 4-1100 to place an Eccentric Classified Ad.

ACT NOW!

SAVE GAS & OIL
and enjoy top PERFORMANCE!

MOTOR OVERHAUL
November Only

\$47.95

Parts Extra If Needed
C.O.E. Trucks Slightly Higher

INCLUDES

1. Rocker Shafts and Arms dis-assembled and cleaned
2. Valves ground
3. Connecting Rods aligned
4. Main Bearings and Connecting Rod Bearings adjusted
5. Oil Pump and Screen cleaned
6. New Piston Rings and Pins installed if needed (parts extra)
7. Motor Tune-up—including all 20 points!

The North Chevrolet Company
Service Dept. Open 7 a.m. to 9 p.m. Monday Thru Friday
7:00 a.m. to 5:00 p.m. Saturday
1000 S. Woodward
Midwest 4-2735
Remember: Our Chassis Lubrications give 100% protection at no extra cost!

ROAD OPEN

To An Economical Auto Loan

Why burden your budget with the high rates and "extra" charges of an expensive loan plan? Take the avenue to easy, **ECONOMICAL** financing—apply here for a **BANK** auto loan, at low cost and on budget terms. Come in any time, for full details.

THE BIRMINGHAM NATIONAL BANK
Birmingham, Michigan

Member Federal Deposit Insurance Corporation
Member Federal Reserve System

A Luxury Becomes a Necessity at **LOW COST!** even soft

SAVE With This New Improved Water Softener!

Soft water is a necessity in every home now... it saves soap, clothes, work. Yes, soft water actually helps clothes wear up to 33-1/3% longer. Enjoy soft water comfort... call us now.

A Premium Quality Softener

MICH. EVER-SOFT SALES CO.
150 N. TELEGRAPH RD. PONTIAC, MICH.
FE. 2-2880 FE. 3-0385

PRE INVENTORY FABRIC SALE
Custom Reupholstering 10 Day Service

\$89

ONLY A MANUFACTURER CAN OFFER SAVINGS LIKE THIS

WA 1-1000

AFTER 5:30 P. M. CALL
19449 W. McNICHOLES 18681 LIVERNOIS
KE 2-3600 UN 4-6300
13230 HARPER
2A-3525

Van Custom FURNITURE MANUFACTURER