

MRS. STANLEY WOLLENBERG MRS. PAUL GARIPEY MRS. JOHN ANNAS  
Birmingham group works on December 5 Winter Carnival. (Eccentric Staff Photo)

## December 5 Winter Carnival Busies Christ Child Group

It's been "strictly business" every Monday night throughout the month of November for Birmingham members of the Christ Child Society and now even the days are being filled with busier preparations as Friday, December 5, approaches.

The Society will take over the Latin Quarter in Detroit at one o'clock that afternoon when four booths will open, including baked goods, dolls, "white elephants" and Christmas gifts.

The Christmas booth is being done exclusively by the members of the Birmingham unit under the direction of Mrs. Stanley Wollenberg and Mrs. John Annas. Wares will include special ceramics in the holiday motif along with candles and greens.

At mid-afternoon selling will be suspended for a fashion show and tea. Friday evening a Monte Carlo party will be in full swing.

COMMITTEE HEADS include localities Mrs. C. H. Burke and Mrs. J. D. Schmidt, program advertising; Mrs. G. A. Lyon, tickets; Mrs. R. C. Marks, prizes; and Mrs. Paul T. Garipey, publicity.

Society deadline is 3 p.m. each Tuesday.

**NO PARKING PROBLEM**  
at  
**MASKILL HARDWARE CO.**  
4400 N. Woodward LI 2-4700  
Gifts — Toys  
Hours Daily 9 a.m.—8 p.m.  
Sun. 10 a.m.—2 p.m.  
Open all day Wednesday

## CLUB CALENDER

November 28-29 — St. Dunstan's "For Love of Money"  
Cranbrook Pavilion (Lone Pine road) ... 9 p.m.  
December 1—Bloomfield Hills branch Woman's Nat'l. Farm and Garden Association

November 26, 1952 THE BIRMINGHAM ECCENTRIC Page 5  
potluck supper ... Christ Church Cranbrook ... 6:30 p.m.  
December 2—Bham Child Study Club ... Mrs. C. E. Mintum ... 8 p.m.  
December 2—Bham Society of Women Painters ... lunch-con meeting ... Mrs. M. T. Viger (Fairway Drive, Detroit).  
December 3—Ladies Aux. 9, Metropolitan Club ... Annual Christmas Party ... Sylvan Glen Golf Club ... 8 p.m.  
December 4—Newcomers' Bridge ... Community House ... 12:30 p.m.  
December 4—ASTU of Michigan Alumnae Association ... Mrs. George Heideman (445 Henley) ... 8 p.m.  
December 6—OES Christmas Bazaar ... Masonic Temple ... 1-9 p.m.

## Do Your Child's Shoes REALLY FIT?

To really fit, children's shoes should be snug around heel and arch where support is needed but should allow ample room for toes.

Pied Piper shoes—due to distinctive design based on long study and research—provide the right kind of fitting at every point.

And unique shoemaking detail makes Pied Pipers fit better when new—and fit better after worn. That is one of the many foot-protecting advantages that make—

## Pied Piper Shoes

the wise buy in children's footwear. And while they may cost a few cents more your annual shoe bill may be less with Pied Pipers.

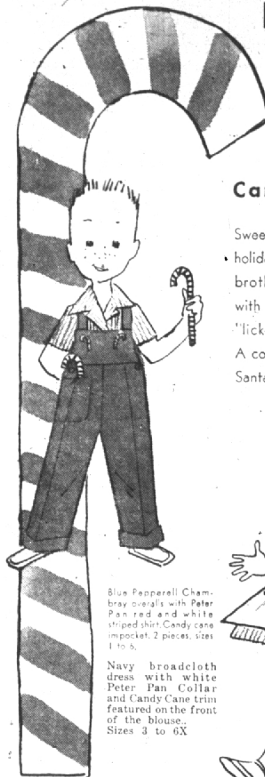
**miller's SHOES**

HEADQUARTERS FOR CHILDREN'S SHOES

## LITTLE FOLKS SHOP features

### Candy Kids

Sweet and saucy tributes to the holiday season—our candy stripe brother and sister sweet-talkers with the candy cane buttons and "lick-stick" cane in the pocket. A confection of perfection for all Santa Claus devotees age 1 to 6.



Blue Pepperell Chambray overalls with Peter Pan red and white striped shirt. Candy cane in pocket. 2 pieces. Size 1 to 6.

Navy broadcloth dress with white Peter Pan collar and Candy Cane trim featured on the front of the blouse. Sizes 3 to 6X.



Johnnie ORIGINAL

175 WEST MAPLE

BIRMINGHAM

Christmas Preview—Monday Evening, December 1

## Today or Tomorrow... You'll Find NONE AS NEW AS NASH!



"Remnants of Automobile Design", Pinin Farina is the world's foremost custom car designer. His royal crest appears on only the costliest hand-crafted cars—and on Nash Golden Airflytes.

Farina styling means new beauty and comfort with the accent on roominess. Widest front and rear seats of any car. Even Reclining Seats and Twin Beds if you wish.

Farina styling narrows front pillars to eliminate "blind spots". New continental sloping hood shows you more of the road for safer, easier driving.

Farina styling is complemented by the new Super-Jeffrey engine—proved in competition the world over for performance, endurance and economy.

Farina styling features new "Road-Guide" fenders to give the eye an aiming point for easy parking and passing.

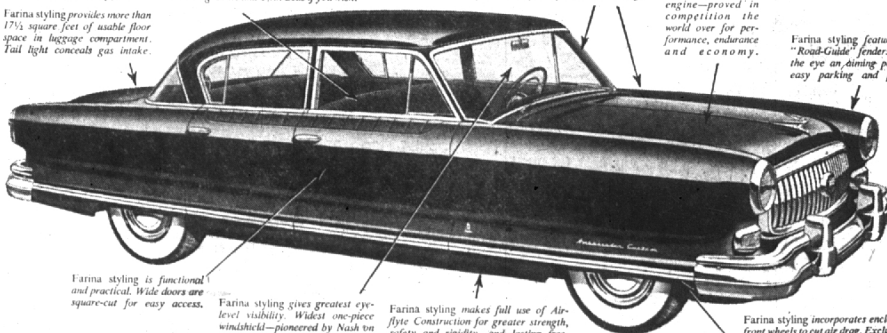
Farina styling provides more than 17½ square feet of usable floor space in luggage compartment. Tail light conceals gas intake.

Farina styling is functional and practical. Wide doors are square-cut for easy access.

Farina styling gives greatest eye-level visibility. Widest one-piece windshield—pioneered by Nash on all models. Widest rear window.

Farina styling makes full use of Airflyte construction for greater strength, safety and rigidity—and lasting freedom from jiggly-bolt squeaks and rattles.

Farina styling incorporates enclosed front wheels to cut air drag. Exclusive Airflex Front Suspension levels road bumps—absorbs shocks and noise.



SEE AND DRIVE AMERICA'S NEWEST AND SMARTEST CARS AT YOUR NEARBY **Nash** DEALER TODAY!

JESS McNEAL, Inc., 360 So. Woodward, Birmingham



## Star Bright GIFTS

for Her!

diamond set watches cased in platinum or white gold.

By these world-famous names



Girard Perregaux  
Hamilton  
Elgin  
Omega

## LAKE JEWELERS

"THE STERLING STORE OF BIRMINGHAM"

Hours Daily: 9:00 - 5:30 Friday: 9:00 A.M. - 9 P.M.  
69 W. Maple Birmingham Midwest 4-5315



## STERNAL'S

408 S. Woodward Free Parking In Rear of Store Phone MI 4-3520