

## Down to Earth

By ALICE WESSELS BURLINGAME

This is the best time of the year to feed your lawn melon plants which is high in nitrogen. Root growth is made in the winter and the seeping of this fertilizer to the hair roots provides assurance for some growth every time a warm spell "breaks". Since it has a bad odor cold weather is the best time of the year to apply, using a seed spreader.

It is not too early to begin to plan for the holiday lighting theme for the exterior of your home. This is an excellent way to spread the warmth of giving we want to share with all at Christmas time. The use of spotlights is an excellent way to dramatize the doorway or special decorations on the grounds or roof. The sealed beams have proven to be a fine all-weather

bulb. It is often necessary to use two fixtures focused upon an object to get the right effect without shadows.

Never install fixtures for garden or holiday lighting attached to an installation high on a building. The wrong perspective is given the observer. Be very careful that your cord is meant for the outdoor elements. Never have wet hands when setting up the electrical equipment.

**LOCAL STORES** and Detroit Edison lighting advisor will be glad to help you on how to achieve something different for your Christmas greeting outdoors. There are different colored glass lamps which you can attach to your lights to achieve a dramatic effect. Don't waste your time with a

blue light as this color has a way of becoming lost in the darkness. Green lighting receives my first vote for maximum effect.

If you want to create a little "drama" for your yard or roof, study greeting cards for an inspiration. It is easy to make "outdoor figures", ready for all weather by making a base of chicken wire, cut and rolled in tubes to the right dimensions, then each appendage attached to become a person, dressed in appropriate gear.

What could be more appropriate than a sled full of youngsters coasting down a steep roof on a snowy night?

When you decorate your door be sure the decoration is the right proportion for the size of the door. It is better to be too large than too small.

Last week we made a late fall visit to the William Howell home at 951 Twin Oaks Lane, off Wimbleson and gave you only a portion of the good garden planning ideas.

**THESE FOLKS HAVE** a picturesque setting on an embankment overlooking the Rouge River.

With the wooded section they realize their limitations, not many highly colored annuals because they call for the sunny settings. But they have dramatized their

bleasings which give them rare wood's flowers, dogwoods and many, many bulbs, large and small including regal and rubrum lilies.

Tuberous rooted begonias are the number one exotic flower to act as their highlight as you round a corner for a new view and, of course, impatiens (annuals) give an abundance of flowers.

Bill Howell can sit back and chuckle while the sunny garden boys take leaves as he knows that act as their highlight as you round a corner for a new view and, of course, impatiens (annuals) give an abundance of flowers.

The front of the Howell home looks like a saltbox (this description is given by the hostess with pride as she is from New England). There you will see cotoneaster horizontal with its low height, tying the low home to the soil. Here with its tiny shiny leaves will provide texture around the calendar.

Bayberry has been planted with the gardener's fingers crossed as it is rare in this area. Eucalyptus has been planted each side of the cement block surface beside the front door to give a vertical effect.

**OREGON HOLLY** has been planted in various places and will provide choice cuttings for the holidays.

The Howells have an interesting iron fence separating the front and back of the property and it gives character to the simple design of this New England style home. Mrs. Howell is always "on the prowl" looking for unusual materials to give their home that "certain something."

Hemlocks were planted under large oaks. Knowing that oaks have lots of hungry roots, the hemlocks were placed on built up beds of good humus to assure them of good root growth.

Several items caught my eye: there has been a telephone bell installed outside so their cars won't have to be strained.

They tried the new plastic material introduced on the market this year to break up clay (they have clay, you know, the old story of the excavation dirt) and they found production very good.

On the south side of the garage they have a seedling trial garden. Their friends are always sure of something unusual from the Howell's seedling bed.

The fountain on the enclosed porch is in the form of a gargoyle which drips into a large lead shell and has a way of relaxing guest and gardener, inviting one to look down between the trees to the lazy river below.

## K. P. Beauchamp Heads New Detroit Rifle Group

WASHINGTON, D. C. Nov. 18.—Kenneth P. Beauchamp, 1485 E. 14 Mile Road, Birmingham, Michigan, has been elected president of Detroit's new senior shooting group, the Kodak Rifle and Pistol club, the National Rifle association announced here today.

The new shooting club joins thousands of other clubs, similarly chartered by the NRA in the promotion of competitive shooting and the teaching of safe firearms handling for all in the community. Members will compete for firing honors in a series of registered tournaments on the club's range.

## Check Ins. Coverage

The Midwest Tree Company has presented the low bid for tree trimming within the City of Birmingham, according to city commissioners. They indicated that work would be done, however, until they had been assured that there is an adequate workmen's compensation coverage held by the firm.

General news deadline is 4:30 p.m. each Tuesday.



## MICHIGAN'S OUTDOOR CLASSROOMS

Thanks to a handful of educators endowed with considerable foresight, Michigan youngsters are broadening their education with outdoor classrooms. Knowledge and appreciation of nature, and the proper, efficient management of her exhaustible resources are taught in these classrooms. Some cities supply facilities for their own outdoor schooling. Others use state property maintained by our Conservation Department.

## Conservation Men on Faculty

While the boys and girls are generally accompanied by their teachers, conservation experts supplement the faculty. A forestry man will take the class to a field point out the effects of selective lumbering, and show how thinning out heavily forested areas gives release to the new growth, makes the remaining trees grow faster, and provides more food within easy reach of our animal population.

## Tip for Radio and TV Sponsors

A game biologist from the Department will spend a day with the class demonstrating the relationship between game populations and the available food, explaining how the hunter's bag of game is just another harvest of a natural crop and how the length of open seasons and special regulations help keep it.

A Birmingham resident, Mort Neff's "Michigan Outdoors" television show appears every Thursday at 7:00 p.m. over station WJW-TV.

## Game populations under control.

Fisheries men will show how the age of fish is determined thru examination of a fish scale under a high-powered microscope, revealing annual rings similar to those found on a cross section of a tree.

## Goal of Educators

Some day, say these forward-looking educators, every 8th grade student in Michigan will spend two weeks in outdoor classrooms some time during the regular school year. The experience will give them not only an insight into the fascinating life of nature but will teach them to live and work together amicably and unselfishly in outdoor camps, and will make better citizens of every girl and boy.

## Table Coolidge Sidewalk

At a public hearing Monday, Birmingham city commissioners tabled action on the construction of a sidewalk on Coolidge north of Maple avenue. "Lack of interest" was given as the reason.

## Appeals Justice Court Decision; Three Others Fined at Friday Session

A Detroit advertising executive, John MacManus of Bloomfield Hills, has appealed a decision of Birmingham's municipal court which Friday found him guilty of drunk driving.

MacManus, arrested Oct. 15, was found guilty here Friday morning by a jury and was ordered by Justice John J. Gailli to pay \$50 fine or spend 10 days in jail. His appearance in circuit court is scheduled for Dec. 8.

## Other cases heard Friday included:

Marek Padjasek, Ferndale, drunk and disorderly, \$5 fine; Cristian Peias, Pontiac, reckless driving, \$25 fine and Charles A. Murali, Royal Oak, reckless driving, \$50.

# GARAGES

COMBINATION STORM SASH  
OVER 200 GARAGES IN THE BIRMINGHAM AREA  
It pays in satisfaction to deal locally—Costs no more

## STUART E. SHEILL

1690 E. MAPLE  
Phone MI 4-3713

## ACT NOW!

# SAVE GAS & OIL

and enjoy top PERFORMANCE!

## MOTOR OVERHAUL

November Only

### \$47.95

Parts Extra If Needed  
C-O-E Trucks  
Slightly Higher

**INCLUDES**

1. Rocker Shafts and Arms dis-assembled and cleaned
2. Valves ground
3. Connecting Rods aligned
4. Main Bearings and Connecting Rod Bearings adjusted
5. Oil Pump and Screen cleaned
6. New Piston Rings and Pins installed if needed (parts extra)
7. Motor Tune-up—including all 20 points!

**The North Chevrolet Company**  
Service Dept. Open 7 a.m. to 9 p.m. Monday Thru Friday  
7:00 a.m. to 5:00 p.m. Saturday  
1000 S. Woodward  
Midwest 4-2735  
Remember: Our Chassis Lubrications give 100% protection at no extra cost!

# Now...PACKARD

## Introduces Two Great New Lines of Cars for '53

From America's Oldest Maker Of Fine Cars  
Come Today's New Leader In The Quality Field  
—The Advanced Contour-Styled PACKARD



NEW! Packard Offers An Entirely New  
Line Of Fine Quality-Built Packard CLIPPERS  
For BIG-Car Value At Medium-Car Cost

**H**ERE'S EXCITING NEWS to thousands who have been waiting for a truly fine automobile! The great name PACKARD—once seen on three out of five luxury cars in America—again distinguishes the very best of the top-quality cars.

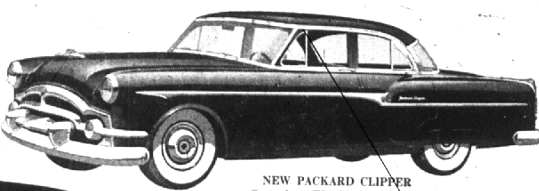
••• For unrivaled motoring comfort, convenience and pleasure, drive the brand-new Packard Patrician, Cavalier, Mayfair, Convertible or one of Packard's custom-built cars. With more power than you'll ever need... and with the amazing ease of Packard Power Steering, Packard Power Brakes—proved in a full year

of actual use—and the industry's finest no-shift drive... these are America's most advanced cars—engineered and precision-built to outperform all others! And Packard's advanced contour styling is now setting the new trend in automobile design.

••• If you want a truly distinctive car—and want it now—see the 1953 Packard. It's today's great new pace-setter in the quality field... from America's oldest maker of fine cars. The record shows that more than 53% of all Packards built since 1899 are still in use. Remember, "Built like a Packard" means really built to last!

**N**OW PACKARD introduces five brilliant Packard Clippers—a brand-new line bringing BIG-car value to the medium field! True products of Packard engineering, experience and skill, these remarkable buys are the roomiest cars in their price class—with seats as wide as the cars are high!

Cushion-mounted safety bodies, direct-acting shock absorbers and road-to-roof soundproofing assure the matchless comfort and quiet of the famous Packard ride. So no matter what you plan to spend, Packard—with two great lines of new cars now available—offers you your best motorcar investment.



NEW PACKARD CLIPPER  
Outclasses The Medium Field!

• For just a few hundred dollars more than the very lowest-priced car, you can now enjoy real Packard quality. See, drive and compare the new Packard Clippers with their mighty Packard Thunderbolt Eight engines. Get BIG-car value at medium-car cost!



NEW '53 PACKARD  
Outclasses The Fine-Car Field!

• Here's America's most advanced new car—with more power than you'll use, with famous Packard Ultramatic Drive, with the only direct-action Power Steering and with Packard Power Brakes—proved faster-acting in more than a full year of actual use!

**"BUILT LIKE A PACKARD" Means Built To Last!**

# Sam Reeves, Inc

1265 S. Woodward

Phones MI 4-1144, MI 6-1145 and MI 4-2960