

Finance Panel Speakers To Include Franklin Man

"Renegotiation Problems" will be discussed by a panel at the Nov. 18 meeting of Detroit chapter, National Association of Cost Accountants in the Park Shelton hotel at 7:30 p.m.

Bernard F. Magruder of 32965 Franklin, member of the Detroit Regional Renegotiation board, will be one of the panel members.

A True Sign of

QUALITY

No SHINE in GABARDINE

When Cleaned and Pressed at

DOUGLAS

IN by 10
OUT by 5

EXCEPT SATURDAY

Douglas Cleaning Co.

David J. Underdown, Owner

PHONE MI 4-1507 PICK-UP AND DELIVERY

534 S. Woodward

In 16 Delicious Flavors WE DELIVER

1/2 GALLON

\$1.07 TAKE HOME

FRENCH VANILLA...Its Richer

WESLEY DRUGS

Open Daily 9:30 a.m. to 10:30 p.m.
100 W. 14 Mile Rd. (Cor. of Pierce)

We Pick Up & Deliver All Prescriptions

Phone MI 4-7563

BUY YOUR NEXT CAR ON THE BASIS OF ITS RECORD...

The features you want in your car, SAFETY, DURABILITY, PERFORMANCE, are proved in these unbiased tests!

Almost every week the make of car you drive is matched with America's other popular makes in stock-car races.

To date this year, Hudsons, just like those you can buy from us, have won 44 out of 52 stock-car races, an all-time record never even approached by any other make.

These victories show beyond question that Hudson's exclusive "step-down" design (with America's lowest center of gravity) gives you road-hugging stability no other car can touch. That's safety! They prove Hudson's Monobolt body-and-frame is the safest, strongest construction used in any car. That's durability!

Finally, this all-time record shows Hudson's high-compression engine has all the power that you'll ever need to get you out of tight spots. That's performance! Thus Hudson gives you more of what you need for your daily driving than does any other car.

So, stop-in and see us. See how it feels to drive America's stock-car champion!

HUDSON

MOST DURABLE CAR YOUR MONEY CAN BUY

Standard trim and other specifications and accessories subject to change without notice.



In addition to safety, durability and performance, Hudson gives owners beauty, modern design and luxurious interiors. Come see us today, or a telephone call will bring a Hudson to your door.

CLOHSET HUDSON

SALES AND SERVICE

820 S. Woodward
Open evenings until 9
Midwest 4-9200

Vandalism Cited In Beverly Hills

Residents in the Beverly Hills area west of Southfield road have been experiencing a small wave of vandalism and larceny.

In one instance a mail box has been opened and mail rifled. On other occasions small shrubs and evergreen trees have been removed in a near professional way. The list of charges also includes destruction of lawn equipment and landscaping.

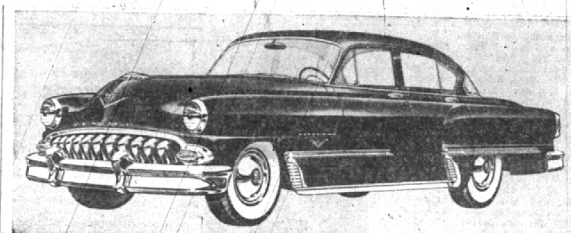
Mrs. Vincent L. Herman, 19133 Bedford, stated that her mail box at the side of the road had been searched on two occasions during the past few months. Opened mail was found lying along the roadside by Mrs. Herman when she returned home in the evenings.

POSTMASTER Bernard E. Fowler of Birmingham is investigating the charge and said that federal postal inspectors would be called in if the situation was serious enough to warrant further action.

Mrs. Herman has also lost two small trees in her yard recently. She said that other neighbors are having the same difficulties.

Mrs. Harry Menard, 19146 Bedford, complained that an expensive lawn sprinkler had been destroyed and also stated that complaints were numerous in the neighborhood.

Mrs. Herman said that the Oakland County Sheriff's department has been called several times to mail the destruction of property. The sheriff's office is also keeping an eye out for continual offenders.



Featuring a completely new body, the 1953 DeSoto goes on display Thursday, Nov. 13, at W. A. Caltrider, Inc., Birmingham's DeSoto-Plymouth dealership. Shown here is a Fire Dome V-8 4-door sedan, powered by DeSoto's 160-horsepower Fire Dome engine. Six body styles are offered in the Fire Dome V-8 series, while five body types are available in DeSoto's Power-master Six line. The 1953 DeSoto offers such features as full power steering; curved one-piece windshield, and sweep-around rear window.

Down to Earth

By ALICE WESELS BURLINGAME

This is the time to think about the materials you will use to give your choice plants winter protection.

Many people who have choice evergreens around the entrances of their home build a support over their spreading specimens so that snow can't fall off the roof and damage the plants. Ice damage can also harm upright evergreens considerably. Supports alongside and around the upright evergreen is fine advice.

At the hardware store you can scope flower border fencing. It has spikes of wire which go into the soil while the top is curved. This fencing will hold leaves blown against it. It will hold snow, too, so it will act as a mulch.

Don't take winter mulching seriously until around Nov. 20, because if you build a cozy protection around a choice rose, shrub, or tree Mr. Rabbit will decide you are a master designer of a rabbit apartment house, and move out that sudden hard beneath the outer surface of the mulch.

TO DERIVE the greatest benefit from a winter mulch there must be moisture in the soil. Remember your winter mulching. Oak leaves make better mulch than maple leaves. They do not mat down but leave air free to circulate. Light boughs are good to hold the mulch. If you are manure keep it away from the tender crowns of your choice perennials.

The purpose of the winter mulch program is to prevent the ground from heaving because of alternating weather and exposing roots to the wind and sun. It also protects plants against extreme dips in the temperature.

When mulching trees and shrubs do not have a high mass of material around the trunk but scatter it about the root zone, aiding the ground to retain moisture so it can travel to the bark and leaves during sun and drying winds.

ENOUGH of this garden lesson, let's go back again to the Southland garden at 4620 Red Maple lane, at attractive ranch home on the corner of Maple, near the southwest corner of Lusher and Maple.

Mrs. Southard, along with her enthusiastic garden husband, during the entire planning of the garden has thought:

"Does this piece of plant material go well with the next selection near it?"

I wasn't too surprised when Mrs. Southard explained that the shrubs planted outside a corner bedroom were selected to match the colors of the wallpaper in the room as they would be tall enough to be seen above the window sill. Beauty looks, because of their coral pink color, were chosen for the garden panorama and at their base are planted flowers which have shiny green leaves, they are neatly completely evergreen. They were introduced in this country in 1919 by "Chinese" Wilson, the great plant explorer. It is very bushy and resembles a boxwood but is many times harder. Here it is at home in partial shade and sun.

Very few people in Birmingham have the calycanthus, a shrub four to five feet high with corrugated foliage. It has red-brown flowers in early spring and is often called the strawberry shrub.

HEMLOCKS ARE favorite evergreens of the Southlands and they favor the calycanthus variety due to their grace, and the soft trimming them to any height. Hemlocks will take a fair amount of shade.

The Julian Barbary in the variety with shiny leaves which stay all winter and give evergreen

ANNOUNCING

Peralta's Music Studio

Is now arranging their Fall Schedule and are accepting a few more Pupils in Voice, Wind Instruments and Piano.

Call Midwest 4-1777 For Appointment

ALWAYS READY

to make your washday easier

BIRMINGHAM LAUNDROMAT

Free Parking, 8-8, Sat.-5 p.m.
1287 S. Woodward MI 4-8225
2 Blocks south of Lincoln

IT PAYS TO SHOP AT

South Oakland County's Largest Health Store

FOR ALL YOUR DIETARY NEEDS

VITAMINS - MINERALS (Concentrated Foods)

Royal Oak Nutritional Products

115 S. Main LI. 1-6820

STERNAL'S TOYS

for FREE CUSTOMER PARKING In Rear of Store

Christmas Gifts To Be Sent Abroad By Jr. Red Cross

Mrs. Robert F. Kehr, 400 Wimpleton, county chairman of the Junior Red Cross, has announced plans to top the 1950 Christmas gift boxes sent by this group to children overseas last year.

Now conducting their membership drive, the Juniors are preparing their boxes which will contain pencils, paper, marbles, socks, ribbons, soap, toothbrushes and simple games.

Supplies for them, according to Mrs. Kehr, are already appearing in the main Red Cross offices at Royal Oak and Pontiac.

"The children aren't expensive," she said, "just little things that our children take for granted. However, to children whose parents are struggling just to provide food and clothing, these gifts are sensational."

"IT NOT ONLY means Christmas for these foreign children, but offers our own boys and girls a chance to work together. Its good material for classroom projects. Furthermore, it's a wonderful opportunity to build friendship."

"Before many years these boys and girls, here and abroad, will be the men and women who are controlling the affairs of the world. This basic friendship, formed now, may mean a great deal to them in the future."

Here's the cleaner you've been hearing about

Amazing New Super-Powered EUREKA

with exclusive Attach-O-Matic CLIP-ON TOOLS

Special Offer To Introduce! Extra BIG ALLOWANCE for your old cleaner during this introductory event. Be quick! Act now!

\$69.95

Save \$20 to \$30 pay only \$125 per week

See "Live" Demonstration at Our Store AT ONCE

MILK'S APPLIANCES

Open Evenings For Your Convenience

1435 S. Woodward BIRMINGHAM Midwest 4-1814

3256 W. 12 Mile BERKLEY Lincoln 3-8833

Check THE FEATURES... then PICK THE WINNER

And YOU'LL SELECT THIS AMAZING NEW 30-INCH FULLY AUTOMATIC DETROIT JEWEL Gas Range

It's New! It's Different! SEE IT TODAY

- HERE'S YOUR TICKET for BETTER COOKING
- MODERN... COMPACT ONLY 30 INCHES WIDE
- 4 BIG BURNER-COOK TOP BURNERS
- GIANT OVEN TAKES SIX PIES OF LARGEST TURKEY WITH ROOM TO SPARE
- GIANT BROILER WITH PYREX GLASS GRILL
- AUTOMATIC OVEN-CONTROL
- 60-MINUTE TIME ALARM

And MANY MORE FINE FEATURES YOU'VE ALWAYS WANTED

Never before so much cooking, baking and broiling space packed into such a smart, compact range. You must see it to believe how new and different it is.

AG-3126-36

THERE'S EVEN A ROASTING CHART BUILT IN THE GLASS OVEN DOOR HANDLE

Think of it... A 4 BURNER, FULLY AUTOMATIC RANGE WITH GIANT OVEN AND BROILER... Only \$224.95 EASY TERMS

TRADE-IN YOUR OLD RANGE NOW

CONSUMERS POWER COMPANY